

UNITED STATES
DEPARTMENT OF THE INTERIOR
BUREAU OF LAND MANAGEMENT

870

APPLICATION FOR PERMIT TO DRILL, DEEPEN, OR PLUG BACK

1a. TYPE OF WORK

DRILL ☒

DEEPEN ☐

PLUG BACK ☐

b. TYPE OF WELL

OIL
WELL ☒

GAS
WELL ☐

OTHER

SINGLE
ZONE ☒

MULTIPLE
ZONE ☐

2. NAME OF OPERATOR

St. Mary Land & Exploration c/o Nance Petroleum Corp.

3. ADDRESS OF OPERATOR

P. O. Box 7168 Billings, MT 59103

4. LOCATION OF WELL (Report location clearly and in accordance with any State requirements.)*
At surface

2060' FNL & 330' FWL E

At proposed prod. zone

Same

14. DISTANCE IN MILES AND DIRECTION FROM NEAREST TOWN OR POST OFFICE*

16 miles SE of Loco Hills

15. DISTANCE FROM PROPOSED*

LOCATION TO NEAREST
PROPERTY OR LEASE LINE, FT.
(Also to nearest drlg. unit line, if any) 330

15. DISTANCE FROM PROPOSED LOCATION* (Inca Fed. 12)
TO NEAREST WELL, DRILLING, COMPLETED,
OR APPLIED FOR, ON THIS LEASE, FT. 250'

16. NO. OF ACRES IN LEASE

1004.23

17. NO. OF ACRES ASSIGNED
TO THIS WELL

40

19. PROPOSED DEPTH

3850

20. ROTARY OR CABLE TOOLS

Rotary

21. ELEVATIONS (Show whether DF, RT, GR, etc.)

3756 GR

22. APPROX. DATE WORK WILL START*

ASAP

23. PROPOSED CASING AND CEMENTING PROGRAM

SIZE OF HOLE	SIZE OF CASING	WEIGHT PER FOOT	SETTING DEPTH	QUANTITY OF CEMENT
12-1/4	8-5/8	24	350	220 sx circ.
7-7/8	5-1/2	15.5	3850	465 sx circ.

8 5/8": Circulate to the surface with 220 sx class "C" with 2% CaCl₂ and 1/4#/sx cellophane flakes.

5 1/2" casing: Circulate to the surface with 265 sx 35:65 Poz:Class "C" lead cement with 6% Bentonite, 5% salt and 1/4#/sx cellophane flakes and tail in with 200 sx Pecos Valley Lite with 1 pps salt, 4 pps Kolite, .2% TIC, .3% UniFLAC, .2% Antifoam and .15% Retarder.

ENCLOSURE 10/54903
19225
65360
9-15-00
30-025-35174

IN ABOVE SPACE DESCRIBE PROPOSED PROGRAM: If proposal is to deepen or plug back, give data on present productive zone and proposed new productive zone. If proposal is to drill or deepen directionally, give pertinent data on subsurface locations and measured and true vertical depths. Give blowout preventer program, if any.

24.

SIGNED Robert R. Lockman TITLE Operations Engineer DATE 7/11/00

(This space for Federal or State office use)

PERMIT NO.

APPROVAL DATE

APPROVED BY

(ORIG. SIGNED) ARMANDO A. LOPEZ

Acting Assistant Field Manager

TITLE Lands And Minerals

DATE

SEP 13 2000

CONDITIONS OF APPROVAL, IF ANY:

APPROVED FOR 1 YEAR

*See Instructions On Reverse Side

DISTRICT I
P.O. Box 1280, Hobbs, NM 88241-1980

DISTRICT II
P.O. Drawer DD, Artesia, NM 88211-0719

DISTRICT III
1000 Rio Brazos Rd., Aztec, NM 87410

DISTRICT IV
P.O. BOX 2088, SANTA FE, N.M. 87504-2088

State of New Mexico
Energy, Minerals and Natural Resources Department

Form C-102
Revised February 10, 1994
Submit to Appropriate District Office
State Lease - 4 Copies
Fee Lease - 3 Copies

OIL CONSERVATION DIVISION

P.O. Box 2088
Santa Fe, New Mexico 87504-2088

☐ AMENDED REPORT

WELL LOCATION AND ACREAGE DEDICATION PLAT

API Number 30-025-35174	Pool Code 65360	Pool Name Young; Queen
Property Code 19225	Property Name INCA FEDERAL	Well Number 13
OGRID No. 154903	Operator Name ST. MARY LAND & EXPLORATION CO.	Elevation 3756

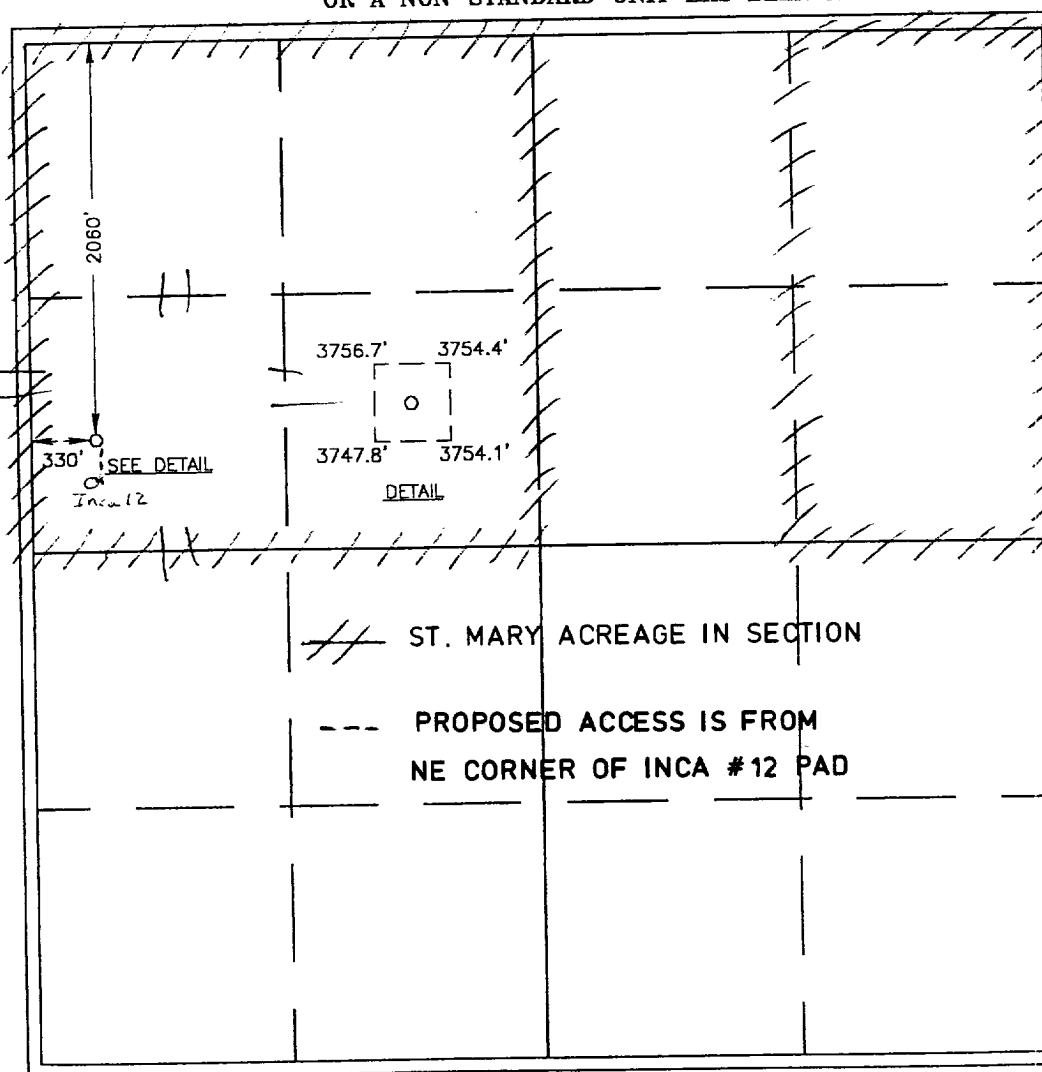
Surface Location

UL or lot No. E	Section 17	Township 18 S	Range 32 E	Lot Idn	Feet from the 2060	North/South line NORTH	Feet from the 330	East/West line WEST	County LEA
---------------------------	----------------------	-------------------------	----------------------	---------	------------------------------	----------------------------------	-----------------------------	-------------------------------	----------------------

Bottom Hole Location If Different From Surface

UL or lot No.	Section	Township	Range	Lot Idn	Feet from the	North/South line	Feet from the	East/West line	County
Dedicated Acres 40	Joint or Infill	Consolidation Code	Order No.						

NO ALLOWABLE WILL BE ASSIGNED TO THIS COMPLETION UNTIL ALL INTERESTS HAVE BEEN CONSOLIDATED
OR A NON-STANDARD UNIT HAS BEEN APPROVED BY THE DIVISION



OPERATOR CERTIFICATION

I hereby certify the the information
contained herein is true and complete to the
best of my knowledge and belief.

Herb R. Thackeray
Signature

Herb Thackeray
Printed Name

Operations Engineer
Title

3/15/00
Date

SURVEYOR CERTIFICATION

I hereby certify that the well location shown
on this plat was plotted from field notes of
actual surveys made by me or under my
supervision and that the same is true and
correct to the best of my belief.

MARCH 8, 2000

Date Surveyed LMP

Signature & Seal of
Professional Surveyor

Ronald J. Kidson
RONALD J. KIDSON
00-11-0325

Certificate No. RONALD J. KIDSON 3239
GARY KIDSON 12641
MACON-McDONALD 12185

DISTRICT I
P.O. Box 1980, Hobbs, NM 88241-1980

DISTRICT II
P.O. Drawer DD, Artesia, NM 88211-0719

DISTRICT III
1000 Rio Brazos Rd., Aztec, NM 87410

DISTRICT IV
P.O. BOX 2088, SANTA FE, N.M. 87504-2088

State of New Mexico
Energy, Minerals and Natural Resources Department

Form C-102
Revised February 10, 1994
Submit to Appropriate District Office
State Lease - 4 Copies
Fee Lease - 3 Copies

OIL CONSERVATION DIVISION

P.O. Box 2088
Santa Fe, New Mexico 87504-2088

☐ AMENDED REPORT

WELL LOCATION AND ACREAGE DEDICATION PLAT

API Number	Pool Code 65360	Pool Name Queen
Property Code 19225	Property Name INCA FEDERAL	Well Number 13
OGRID No. 154903	Operator Name ST. MARY LAND & EXPLORATION CO.	Elevation 3756

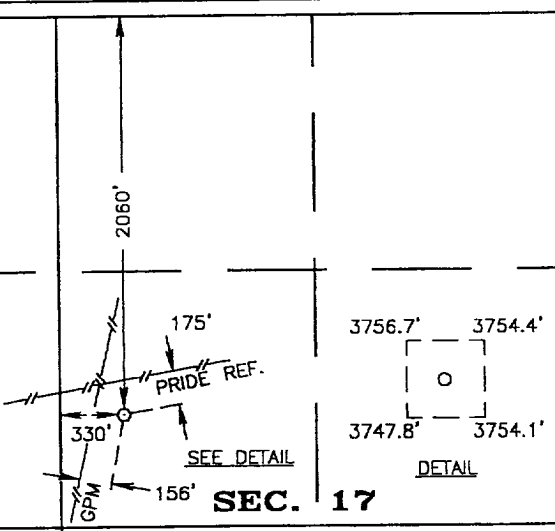
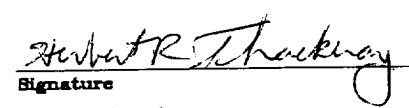
Surface Location

UL or lot No. E	Section 17	Township 18 S	Range 32 E	Lot Idn	Feet from the 2060	North/South line NORTH	Feet from the 330	East/West line WEST	County LEA
--------------------	---------------	------------------	---------------	---------	-----------------------	---------------------------	----------------------	------------------------	---------------

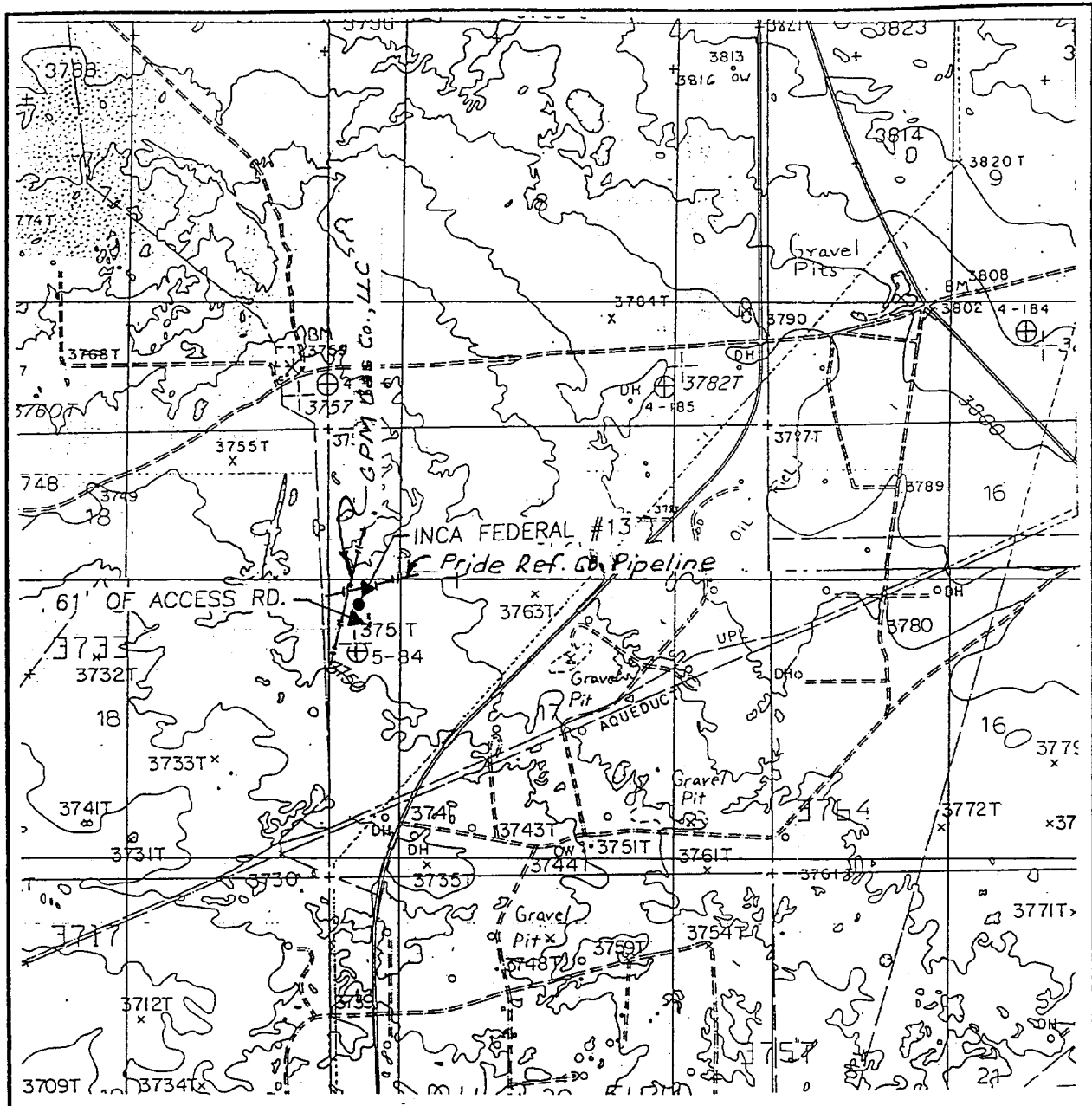
Bottom Hole Location If Different From Surface

UL or lot No.	Section	Township	Range	Lot Idn	Feet from the	North/South line	Feet from the	East/West line	County
					Dedicated Acres	Joint or Infill	Consolidation Code	Order No.	

NO ALLOWABLE WILL BE ASSIGNED TO THIS COMPLETION UNTIL ALL INTERESTS HAVE BEEN CONSOLIDATED
OR A NON-STANDARD UNIT HAS BEEN APPROVED BY THE DIVISION

 <p>SEC. 18</p> <p>SEC. 17</p>		OPERATOR CERTIFICATION <i>I hereby certify the the information contained herein is true and complete to the best of my knowledge and belief.</i>  Signature Herb Thackeray Printed Name Operations Engineer Title 3/15/00 Date
		SURVEYOR CERTIFICATION <i>I hereby certify that the well location shown on this plat was plotted from field notes of actual surveys made by me or under my supervision, and that the same is true and correct to the best of my belief.</i> <p>MARCH 8, 2000</p> <p>Date Surveyed LMP</p> <p>Signature & Seal of Professional Surveyor</p> <p>00-11-0325</p> <p>Certificate No. RONALD J. KIDSON 3239 GARY KIDSON 12641 MACON McDONALD 12185</p>

LOCATION VERIFICATION MAP



SCALE: 1" = 2000'

CONTOUR INTERVAL:

MALJAMAR - 10'

GREENWOOD LAKE - 10'

SEC. 17 TWP. 18-S RGE. 32-E

SURVEY N.M.P.M.

COUNTY LEA

DESCRIPTION 2060' FNL & 330' FWL

ELEVATION 3756

ST. MARY LAND
OPERATOR & EXPLORATION CO.

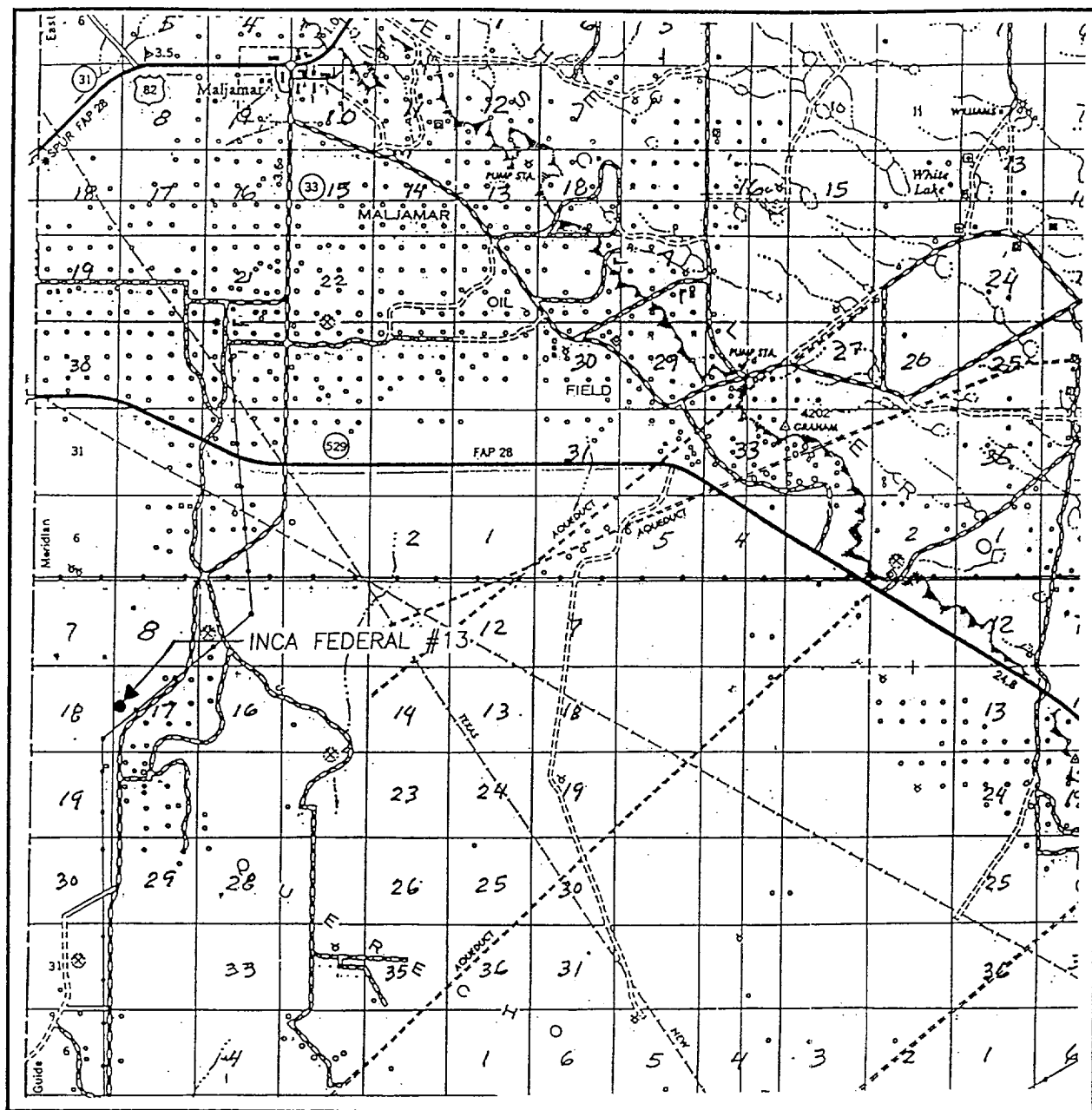
LEASE INCA FEDERAL

JOHN WEST SURVEYING
HOBBS, NEW MEXICO
(505 393-3117)

U.S.G.S. TOPOGRAPHIC MAP

MALJAMAR, GREENWOOD LAKE, N.M.

VICINITY MAP



SCALE: 1" = 2 MILES

SEC. 17 TWP. 18-S RGE. 32-E

SURVEY N.M.P.M.

COUNTY LEA

DESCRIPTION 2060' FNL & 330' FWL

ELEVATION 3756

OPERATOR ST. MARY LAND & EXPLORATION CO.

LEASE INCA FEDERAL

JOHN WEST SURVEYING
HOBBS, NEW MEXICO
(505 393-3117)

**Nine Point Drilling Plan
(supplement to BLM 3160-3)**

St. Mary Land and Exploration Co.
Inca Federal #13
2060' FNL, 330' FWL; Sec 17, T18S, R32E
Young (Queen) Field
Lea Co., NM
NM-9016

1. The geologic surface formation is quaternary.
2. Name and estimated tops of geologic horizons

Yates	2470'
Queen	3695'
3. Protection of possible useable water will be achieved by setting 8.625" surface casing @ 350' + and cementing it to surface. Based on the open hole log of Inca #12 the top of the Queen oil zone is anticipated at 3695' and bottom at 3755'. Isolation will be achieved by setting 5.5" casing @ 3850' +/-, and cementing back to surface.
4. Specifically the casing strings referenced in #3 above will consist of the following:

Surface:	8.625" OD, 24#/ft, J55, STC, new pipe @ 350'+ in 12.25" hole
Production:	5.50" OD, 15.5#/ft, J55, LTC, new pipe @ 3850'+/- in 7.875" hole

Cementing programs for the above casing strings are:

- (b) Surface: 220 sx class C w/ 2% CaCl₂, .25#/sk celloflake mixed at 14.8 ppg, and having a yield of 1.33 cu ft/sk

The above volume represents 100% excess over calculated hole volume, and will be adjusted to actual setting depth of casing. The slurries will be preceded by a fresh water spacer, and displaced with brine water.

- Production: (a) 265 sx 35/65 Poz/Class C w/6% bentonite, 5% salt, 5% salt, and .25#/sk celloflake mixed @ 12.6 ppg and having a yield of 1.99 cu ft/sk
- (b) 200 sx Pecos Valley Lite w/1pps salt, 4 pps kolite, .2% TIC, .3% UniFLAC, .2% Antifoam and .15% retarder mixed @ 13.0 ppg, and having a yield of 1.42 cu ft/sk

The above are DS products with 25% excess volume - actual volumes will be adjusted to the open hole caliper of this wellbore. The cement slurries will be preceded by 12 bbls cement wash for mud removal and displaced with fresh water. Equivalent products from another vendor may be substituted for DS depending on price/availability.

5. The well control equipment to be employed during the drilling of this well is as illustrated on EXHIBIT A. This equipment includes a pipe and blind rams and a choke manifold of comparable pressure rating. Equipment will be rated for a minimum of 2000 psi, and will be tested to 80% of that pressure rating prior to drilling out the 8.625" surface casing.
6. It is anticipated that this well will be drilled to TD utilizing fluids shown below
 - 0-350' FW mud 8.4-9.0 ppg Utilize native solids to maintain sufficient viscosity to clean hole. Mix paper as required to control seepage loss.
 - 350-3650' Brine 9.9-10.0 ppg Circulate thru reserve pit for gravitational solids removal. Add paper as required to control seepage loss.
 - 3650-3850' Salt gel 10-10.1 ppg Confine circulation to steel pits. Maintaining water loss @ 12 cc +/-.
7. Auxiliary equipment will include an upper kelly cock valve, safety valve to fit drill pipe and pressure gauges.
8. No drill stem testing or coring is planned for this wellbore. A one-man mud logging unit will be utilized from 3000' to TD to record geological tops, collect samples, and monitor drilling fluids for hydrocarbons. No open hole electric logs are planned as this information is available from the Inca Federal #12 twin well. A cased hole neutron log will be run from PBTD - 2800' to correlate to the Inca 12 open hole logs and a GR/CBL/CCL from PBTD to surface to evaluate cement quality.
9. The expected BHP at TD is not expected to exceed 1500 psi, and a BHT of 95 F is anticipated. There is no H₂S present in the hydrocarbons being produced from the other wells that the company operates in this section. Should such unexpected circumstances be encountered the operator and drilling contractor are prepared to take necessary steps to ensure safety of all personnel, and environment. Lost circulation is not expected to be a serious problem in this area, and hole seepage will be compensated for by additions of small amounts of LCM in the drilling fluid.

It is estimated that this well will be drilled and cased in 8-9 days. Drilling will commence as soon after approval is received and services can be contracted.

**Thirteen Point Plan for Surface Use
(additional data for form 3160-3)**

St. Mary Land and Exploration Co.
Inca Federal #13
2060' FNL, 330' FWL; Sec 17, T18S, R32E
Young (Queen) Field
Lea Co., NM
NM-9016

1. **EXISTING ROADS** – A “VICINITY MAP” and a “LOCATION VERIFICATION MAP” by John West Surveying are attached which show the location of existing roads and the area topography.

The road log to the location is as follows:
 - a) Entrance to the lease is from County Road 126 – 2.5 miles south of the junction of 126 & US 529.
 - b) Proceed west through cattleguard for .6 miles.
 - c) Turn south for .2 miles to Inca Federal #7 well and battery.
 - d) Proceed east for .2 miles and turn south for .2 miles.
 - e) Turn west for .2 miles going past the Inca Federal #8 and continue west another .3 miles to the Inca Federal #12.
 - f) The Inca Federal #13 stake is 250' north of the #12 well.
2. **PLANNED ACCESS ROADS** – Approximately 200' of new N-S access road will be built from the NE corner of the Inca #12 pad to the proposed pad for Inca #13.
3. **LOCATION OF EXISTING WELLS** – EXHIBIT B shows the location of other wells within a mile radius of the proposed location. All are completed as producers except those indicated by a dry hole symbol and the Inca #14 which is a possible follow-up to the north pending the results of the proposed well.
4. **LOCATION OF EXISTING OR PROPOSED FACILITIES** – Upon completion as a producer, a flow line will be laid to existing facilities at the Inca Federal #7 where appropriate separation and measurement equipment exist. The line will parallel the Inca #12 flowline which also produces to this battery.
5. **LOCATION AND TYPE OF WATER SUPPLY** - All water (fresh or otherwise) needed for the drilling and completion of this well will be purchased from a commercial source and trucked to the location via the existing and proposed access road. No water source wells will be drilled, and no surface water will be utilized.
6. **SOURCE OF CONSTRUCTION MATERIALS** - Construction material (caliche) required for the preparation of the drill site is available from a local source 3 ½ miles away. It is not anticipated that a significant amount of material will be required as the terrain is relatively flat. Transportation will be over the existing roads.
7. **METHODS FOR HANDLING WASTE DISPOSAL** -

- Drill cuttings will be disposed into drilling pits after fluids have evaporated .
 - The drilling pits will be lined with a biodegradable plastic liner, and buried as per regulatory requirements. The pits will be located on the same location as the previously reclaimed Inca #12 pits.
 - Receptacles for solid wastes (paper, plastic, etc) will be provided and equipped to prevent scattering by wind, animals, etc. This waste will be hauled to an approved landfill site.
 - Any other waste generated by the drilling, completion, testing of this well will be removed from the site within 30 days of the completion of drilling or testing operations.
 - A Porta-John will be provided for the crews. This will be properly maintained during the drilling operations and removed upon completion of the well.
8. **ANCILLARY FACILITIES** - The drilling, completion, and/or testing of this well will require no ancillary facilities.
9. **WELLSITE LAYOUT** - Attached as EXHIBITS C & D are plats showing the anticipated orientation of the drilling rig and the pad. A similar rig may have to be substituted for Big Dog Rig #3 if it is no longer available when approval is granted for this application. The pits will be on the south side of the location to utilize the same spot they were built for the Inca #12. Material moved to create the drilling pits will be utilized in the dike around the pits so as to facilitate restoration of the area when operations are completed.
10. **PLANS FOR SURFACE RESTORATION** - Reclamation of the surface location will be in accordance with the requirements set forth by the BLM. As stated earlier all waste generated by this operation will be disposed of in an approved manner, and the site restored as closely as possible to its pre-operation appearance. Due to the topography of the area no problems are anticipated in achieving this status and no erosion or other detrimental effects are expected as a result of this operation.
11. **OTHER INFORMATION** - The surface ownership of the drill site and the access routes are under the control/ownership of :

Bureau of Land Management
P.O. Box 1778
Carlsbad, New Mexico 88221-1778
505-234-5972

The BLM representative for this area is Barry Hunt who can be reached at the above number, or 505-369-4046.

The site was archaeologically surveyed for the Inca Federal #12 in October, 1992. A copy of that report which noted no cultural sites is attached.

12. **OPERATORS REPRESENTATIVE** - St. Mary Land and Exploration is covered by Nationwide Bond No. 6041872. Nance Petroleum Corporation is a wholly owned subsidiary of St. Mary represented by:

Robert L. Nance, President

Gary L. Evertz, Operations Manager

Herb Thackeray, Operations Engineer
550 North 31st Street, Suite 500
P.O. Box 7168
Billings, MT 59103
406-245-8627 (o)
406-861-7372 (m)
406-656-7250 (h)

Jackie Herron, Contract Pumper
Hagerman, NM
505-746-7601 (m)
505-752-2701 (h)

13. OPERATORS CERTIFICATION

I hereby certify that I, Herb Thackeray-Operations Engineer, have inspected the proposed drill site and access route and that I am familiar with the conditions that currently exist; that the statements made in the APD package are to the best of my knowledge true and correct; and that the work associated with operations herein will be performed by ST. MARY L&E/NANCE PETROLEUM CORP and it's contractors and subcontractors in conformity with the terms and conditions of this APD package. I also certify responsibility for the operations conducted on that portion of the leased lands associated with this application with bond coverage being provided under a BLM nationwide bond.

This statement is subject to the provisions of 18 U.S.C. 1001 for the filing of a false statement.

Name and title: Herb Thackeray, Operations Engineer for Nance Petroleum Corp.
A wholly owned subsidiary of St. Mary Land & Exploration Co.

Signature: Herb R Thackeray

Date: 7/11/00

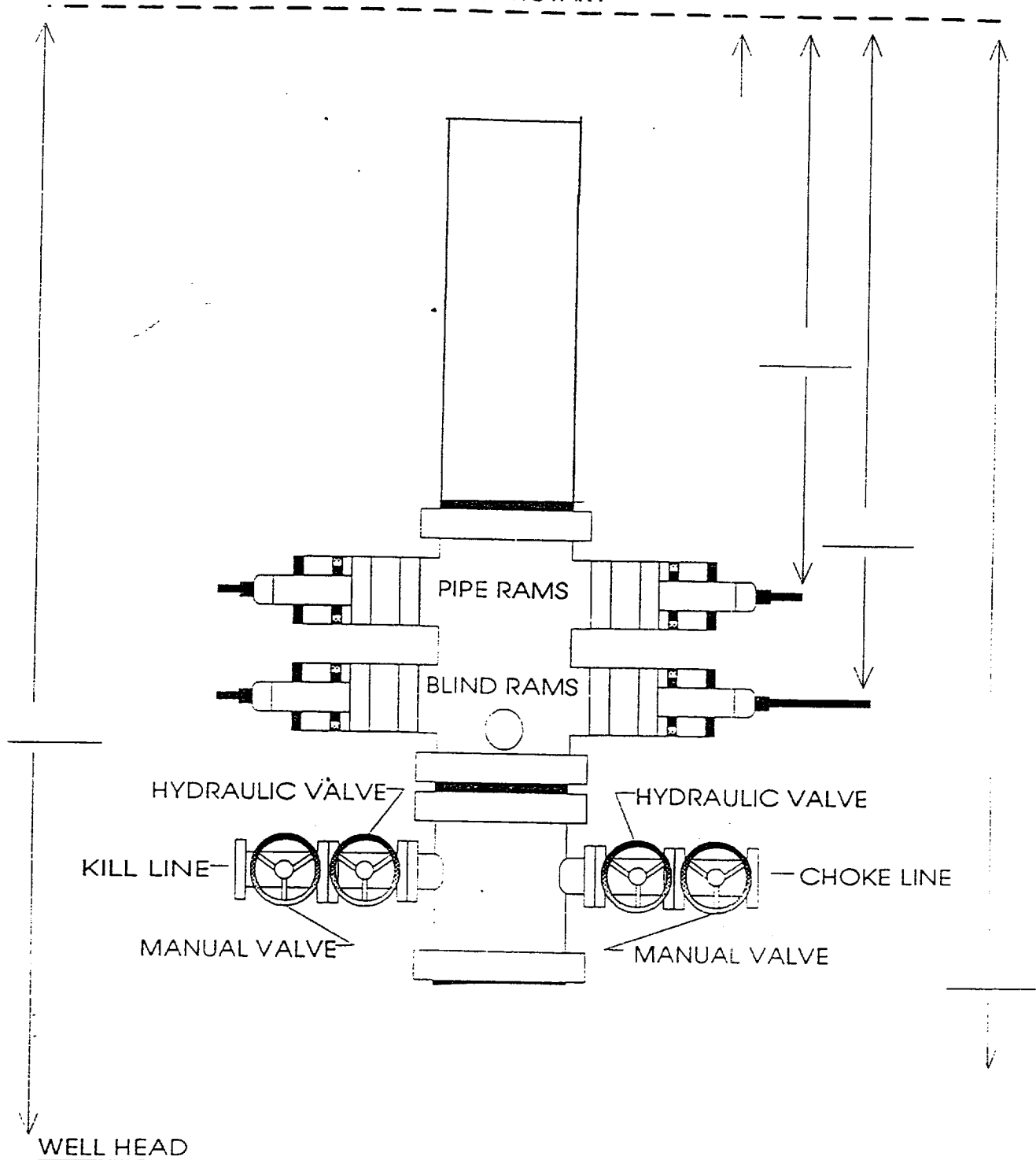
EXHIBIT A

B.O.P. STACK SPACING

AHEP-3187

SIZE: **2000 psi**

TOP OF ROTARY

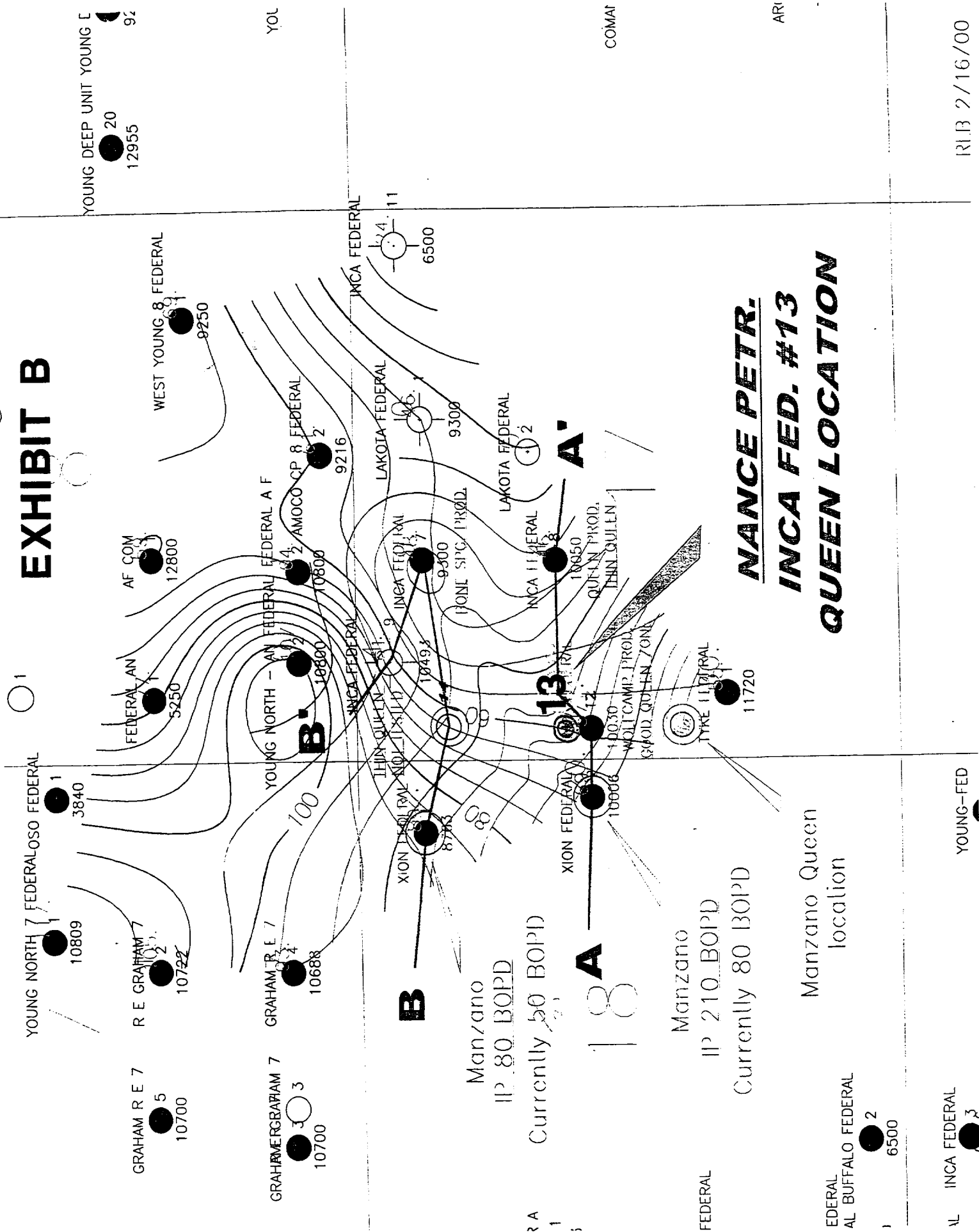


WELL INCA FED #13

CONTRACTOR

TBD

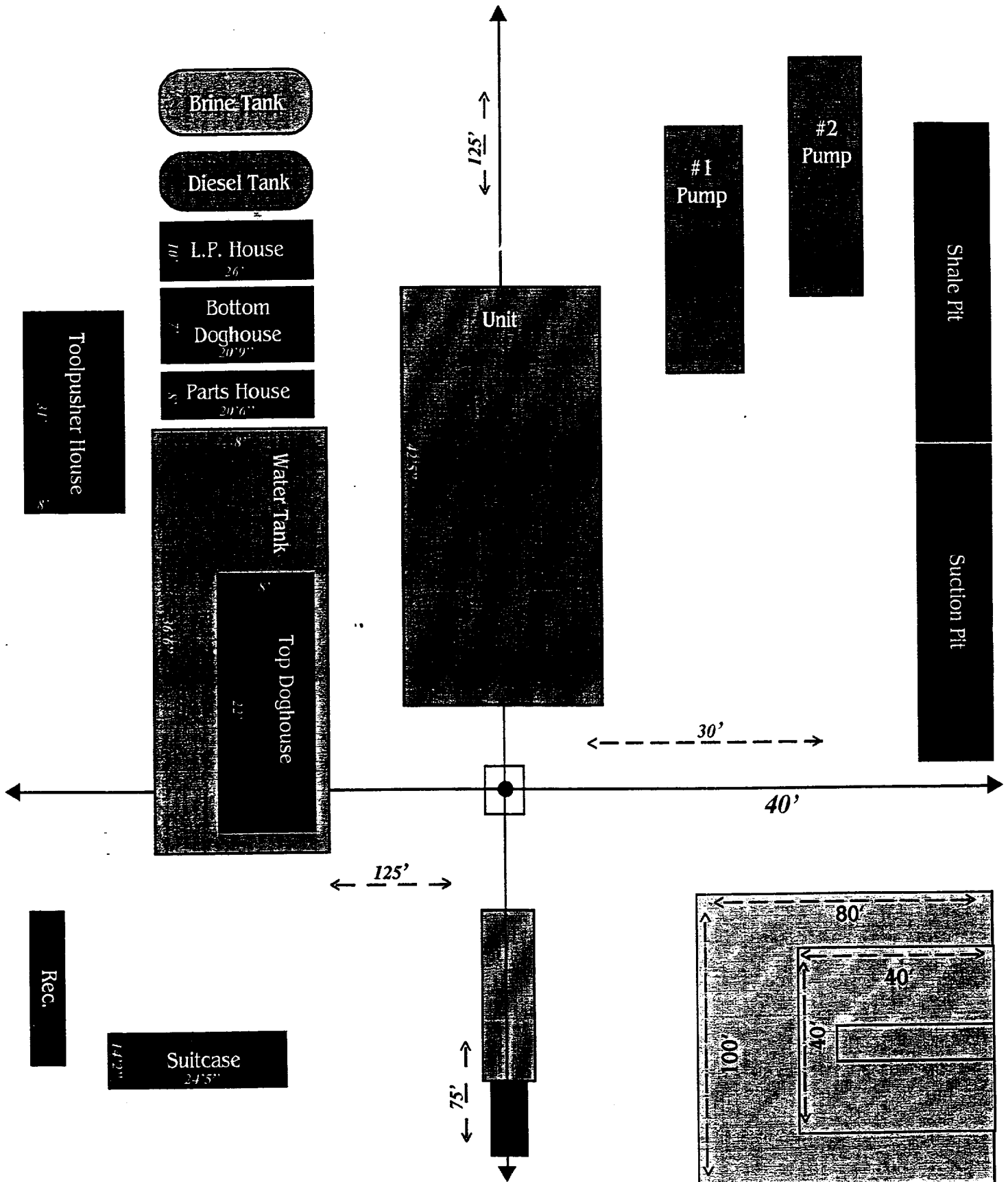
RUB 2/16/00



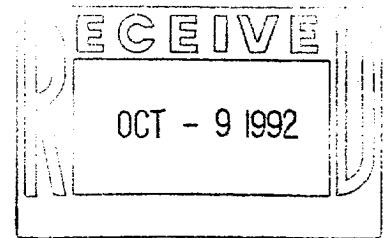


Rig #3 Rig Plan

*Or Equivalent



ARCHAEOLOGICAL SURVEY CONSULTANTS
P.O. Drawer D
Roswell, New Mexico 88202
Phone: 505-623-5012



Inca Fed. # 12 &
Access/Util. Cor.

ASC Job 92-153

Date: 10/07/1992

Harold D. Justice
Siete Oil & Gas Corporation
P.O. Box 2523
Roswell, New Mexico 88202

Dear Harold:

Enclosed please find ASC Report 92-153, covering the archaeological survey, on federal land surface, of the Inca Federal Well No. 12 & Access Road/Utilities Corridor. The survey, including staking of an access road centreline, was requested by Cathy Batlay.

Since no cultural resources were found, we have recommended clearance for the well pad and access road/utilities corridor. Copies of the report have been distributed as per the list on the title page, and you need not concern yourself with distribution to those agencies.

Also enclosed please find ASC Invoice 92-153, for performance of the survey. An ASC Rate Sheet, effective as of 9/01/1992, is included for your files.

We are pleased to have been of service with this project, and hope to assist you in the future. Should you have questions concerning the project, please call our office.

Sincerely,

Dorothy

D.M. Griffiths
Principal Investigator

enclosure: report (1); invoice (1); ASC Rate Sheet (1)

cc: ASC File 92-153 (1)

ARCHAEOLOGICAL SURVEY CONSULTANTS
P.O. Drawer D
Roswell, New Mexico 88202-2698
phone: 505-623-5012

ARCHAEOLOGICAL SURVEY RATES

Date: effective September 1, 1992

WELL PAD (400 ft. square), with a maximum of 1/4 mile
of access road (100 ft. wide): \$ 175.00 per pad

Oversize Well Pad (up to 660 ft. square) with a maximum of
1/4 mile of access road (100 ft. wide): \$ 275.00 per pad

CALICHE/GRAVEL PIT: 5 acres or less in size: \$ 200.00 per pit
 5 to 10 acres in size: \$ 275.00 per pit
 10 to 15 acres in size: \$ 385.00 per pit
 15 to 20 acres in size: \$ 460.00 per pit
 20 to 25 acres in size: \$ 545.00 per pit
 25 to 30 acres in size: \$ 635.00 per pit
 30 to 35 acres in size: \$ 720.00 per pit
 35 to 40 acres in size: \$ 805.00 per pit
 40 to 45 acres in size: \$ 900.00 per pit

[Note: above charges are for archaeological survey only]

** CALICHE PIT layout, installation of permanent markers,
measuring, & preparation of scale maps for BLM: \$ 350.00 per pit

R/W SURVEY [pipeline, powerline, access road, etc., 100 ft. wide]
.....: \$ 225/mile or part of mile

SEISMIC LINE CORRIDOR (100 ft. wide): \$ 275/mile or part of mile
Seismic line corridors wider than 100 ft. will require negotiation.

R/W STAKING, FIELD CONSULTATION, SURVEY DELAYS (area not properly staked, not
staked on time, stand-around time, corners not staked, etc.): \$ 35.00 per work hour

R/W CENTRELINE PLOTTING (if a registered surveyor's plat is not provided)
.....: \$ 10.00 per plotting point

SITE RECORDING FEE (if archaeological site found): \$ 90.00 per site

ISOLATED FIND RECORDING FEE: per Isolated Find Location: \$ 10.00 each

EXPENSES:

Vehicle Mileage: \$ 0.45 per mile
Metal "T" Posts or wood lath, pin flags, etc. for staking: at cost
N.M. State Land Archaeological Survey Easement Application Fee: \$30.00 per
application plus \$10.00 per section over three sections (current NM State charges)

Artifact Curation Fee (if diagnostic artifact found): at cost

Per Diem- (when overnight accomodation required) meals & lodging per person per day:
.....: \$ 45.00 per person per day

ADMINISTRATION/OVERHEAD: 20% of project charges

STATE & LOCAL TAXES: 6.0625% of charges

** Service provided if client has not employed a registered surveyor to stake & map
the caliche pit, with appropriate scale drawings, in accordance with BLM directives.

A service charge of 1.5% per month (minimum of \$5.00 per month) is levied against all
invoices not paid within 30 days of the date of the invoice.

ARCHAEOLOGICAL SURVEY of the SIETE OIL & GAS CORPORATION
INCA FEDERAL WELL NO. 12 & ACCESS ROAD/UTILITIES CORRIDOR
T18S, R32E, SECTION 17, SW $\frac{1}{4}$ NW $\frac{1}{4}$
[2310 FNL, 330 FWL]. LEA COUNTY, NEW MEXICO.

FEDERAL LAND SURFACE
(U.S.G.S. 7.5 minute series, GREENWOOD LAKE, N.M., 1985)

ASC Report 92-153

by James V. Sciscenti, Project Archaeologist

ARCHAEOLOGICAL SURVEY CONSULTANTS
P.O. Drawer D, Roswell, New Mexico 88202
[505] 623-5012

PERMIT NO.: 18-2920-92-F

October 7, 1992

Prepared for:

Siete Oil & Gas Corporation
P.O. Box 2523
Roswell, New Mexico 88202

Attention: Harold D. Justice

Distribution:

~~Siete Oil & Gas Corporation (1)~~
BLM - Carlsbad Resource Area (2)
New Mexico SHPO (1)
Sciscenti (1)

ARCHAEOLOGICAL SURVEY CONSULTANTS

CULTURAL RESOURCES EXAMINATION

on lands administered by the
Department of the Interior
Bureau of Land Management
Roswell District, New Mexico

ASC PERMIT NO.: 18-2920-92-F
ASC Job No.: 92-153 [Siete Oil
& Gas Corp. Inca Federal Well
No. 12 & Access/Utilities Cor.

1. **ABSTRACT:** intensive archaeological survey of the Siete Oil & Gas Corporation Inca Federal Well No. 12 (400 ft. sq., 3.67 acres), and Access Road/Utilities Corridor (1280 ft. long x 150 ft. wide, 2.94 acres), with a total federal acreage of 6.61 acres was inspected for cultural remains.

Archaeological survey of the proposed Inca Federal Well No. 12 and access road/utilities corridor did not reveal any cultural resources. Therefore, archaeological **CLEARANCE** for the Inca Federal Well No. 12 and access road/utilities corridor is **RECOMMENDED**.

2. **LEGAL LOCATION:** T18S, R32E, Section 17, SW $\frac{1}{4}$ NW $\frac{1}{4}$ (2310 FNL, 330 FWL). **ACCESS ROAD R/W LOCATION:** T18S, R32E, Section 17: SW $\frac{1}{4}$ NW $\frac{1}{4}$; SE $\frac{1}{4}$ NW $\frac{1}{4}$. Lea County, New Mexico.

Map Reference: U.S.G.S. 7.5 minute series, GREENWOOD LAKE, NEW MEXICO, 1985.
Land Status: BLM, Roswell District, Carlsbad Resource Area, New Mexico.

3. **PROJECT DESCRIPTION:** well pad (400 ft. sq., 3.67 acres), and Access Road/Utilities Corridor (1280 ft. long x 150 ft. wide, 2.94 acres), with a total federal acreage of 6.61 acres was inspected for cultural remains.

TOPOGRAPHY: situated on the Mescalero Pediment, Querecho Plains, in an area of relatively deep, undulating, to rolling fine sandy aeolian topography, with the occurrence of dune rises in the SE quadrant and in the north-central area of the pad, with lower rises to the south of the access road R/W. The rises have elongate to crescent-shaped deflation basins up to 2.0 metres in depth. Much of the area is stabilized. The eastern end of the access is relatively flat, marked by shallow blowouts. **Permanent Water:** Laguna Plata, ca. 10.8 miles S/SE. **Potential Water:** Little Lake, ca. 1.8 miles E/NE. **Soils:** Kermit-Palomas fine sands. **Elevation:** 3752 ft. to 3759 ft. **Slope:** 0.27° to 0.47°. **Aspect:** SW. **Lithic Resources:** not available in immediate project area. **Vegetation:** Grassland Formation, scrub-grass scrub disclimax community.

4. **EXAMINATION PROCEDURE:** straight and zig-zag transects spaced no greater than 15 metres apart. **Work Hours on ground:** 5.0. **Area Delineation:** staked by client. **Visibility:** ground, ca. 60%, with 100% in deflated areas; weather, sunny.

5. **FINDINGS:** BLM records (Ruebelmann, 9/04/92) show the prior recording of NM-06-2878 in Section 17 (T18S, R32E). The site will not be endangered by construction activity.

Archaeological survey of the proposed Inca Federal Well No. 12 and access road/utilities corridor did not reveal any cultural resources.

6. **RECOMMENDATIONS:** archaeological **CLEARANCE** for the Siete Oil & Gas Corporation Inca Federal Well No. 12 and access road/utilities corridor is **RECOMMENDED**.

Date of Examination: September 9 & 28, 1992

Project Archaeologist: _____

Principal Investigator: _____

D.M. Griffiths

ABOVE DATE DOES NOT
INDICATE WHEN
CONFIDENTIAL LOGS
WILL BE RELEASED

ELF

