

KARRY'S COPY
UNITED STATES DEPARTMENT OF THE INTERIOR
BUREAU OF LAND MANAGEMENT
1625 N. French Dr.
Hobbs, NM 88240
815

FORM APPROVED
OMB NO. 1004-0136
Expires: February 28, 1995

APPLICATION FOR PERMIT TO DRILL OR DEEPEN

1a. TYPE OF WORK

DRILL ☒

DEEPEN ☐

b. TYPE OF WELL

OIL WELL ☒

GAS WELL ☐

OTHER ☐

SINGLE ZONE ☒

MULTIPLE ZONE ☐

2. NAME OF OPERATOR

Nearburg Producing Company

3. ADDRESS AND TELEPHONE NO.

3300 North A Street, Building 2, Suite 120, Midland, Texas 79705 (915) 686-8235

4. LOCATION OF WELL (Report location clearly and in accordance with any State requirements.)

At surface 1650' FSL and 990' FEL
At proposed prod. zone

I

14. DISTANCE IN MILES AND DIRECTION FROM NEAREST TOWN OR POST OFFICE*

8 miles NE of Halfway, New Mexico

15. DISTANCE FROM PROPOSED*
LOCATION TO NEAREST
PROPERTY OR LEASE LINE, FT.
(Also to nearest drg. unit line, if any)

990'

16. NO. OF ACRES IN LEASE

520

17. NO. OF ACRES ASSIGNED
TO THIS WELL

40

18. DISTANCE FROM PROPOSED LOCATION*
TO NEAREST WELL, DRILLING, COMPLETED,
OR APPLIED FOR, ON THIS LEASE, FT.

19. PROPOSED DEPTH

9,900'

20. ROTARY OR CABLE TOOLS

Rotary

21. ELEVATIONS (Show whether DF, RT, GR, etc.)

3698' GR

22. APPROX. DATE WORK WILL START*

09/16/00

23. PROPOSED CASING AND CEMENTING PROGRAM

SIZE OF HOLE	GRADE, SIZE OF CASING	WEIGHT PER FOOT	SETTING DEPTH	QUANTITY OF CEMENT
17-1/2"	13-3/8" J55	48#	1550'	800 sx cmt, circ to surface
11"	9-5/8" J55	24 & 32#	3300'	1000 sx cmt, circ to surface
7-7/8"	5-1/2" N80	17# & 20#	9900'	500 sx cmt to cover productive zones

WITNESS

Propose to drill the well to sufficient depth to evaluate the Bone Spring formation. After reaching TD, logs will be run and casing set if the evaluation is positive. Perforate, test and stimulate as necessary to establish production.

Acreage dedication 40; NE/SE of Section 13.

OPER. GRID NO. 15742
PROPERTY NO. 26700
POOL CODE 27230
EFF. DATE 10-4-00
API NO. 30-025-35192

APPROVAL SUBJECT TO
GENERAL REQUIREMENTS AND
SPECIAL STIPULATIONS

IN ABOVE SPACE DESCRIBE PROGRAM. If proposal is to deepen, give data on present productive zone and proposed new productive zone. If proposal is to drill or deepen directionally, give pertinent data on subsurface locations and measured and true vertical depths. Give blowout preventer program, if any.

24.

SIGNED

TITLE Drilling Superintendent

DATE

6/22/00

(This space for Federal or State office use)

PERMIT NO.

APPROVAL DATE

Application approval does not warrant or certify that the applicant holds legal or equitable title to those rights in the subject lease which would entitle the applicant to conduct operations thereon.
CONDITIONS OF APPROVAL, IF ANY:

/S/LARRY D. BRAY

APPROVED BY

TITLE

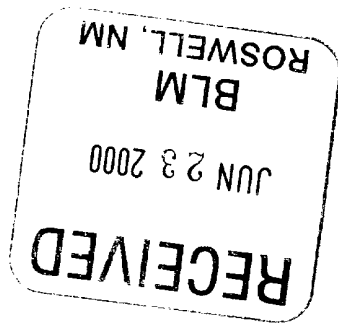
Assistant Field Manager,
Lands And Minerals

DATE

APPROVED FOR 1 YEAR

Title 18 U.S.C. Section 1001, makes it a crime for any person knowingly and willfully to make to any department or agency of the United States any false, fictitious or fraudulent statements or representations as to any matter within its jurisdiction.

GWN



DISTRICT I
P.O. Box 1980, Hobbs, NM 88241-1980

DISTRICT II
P.O. Drawer DD, Artesia, NM 88211-0719

DISTRICT III
1000 Rio Brazos Rd., Aztec, NM 87410

DISTRICT IV
P.O. BOX 2088, SANTA FE, N.M. 87504-2088

State of New Mexico
Energy, Minerals and Natural Resources Department

Form C-102
Revised February 10, 1994
Submit to Appropriate District Office
State Lease - 4 Copies
Fee Lease - 3 Copies

OIL CONSERVATION DIVISION

P.O. Box 2088
Santa Fe, New Mexico 87504-2088

☐ AMENDED REPORT

WELL LOCATION AND ACREAGE DEDICATION PLAT

API Number 30-025-35192	Pool Code 77380	Pool Name Gem; Bone Spring, East
Property Code 2.6700	Property Name PANAMA "13" FED	Well Number 2
OGRID No. 15742	Operator Name NEARBURG PRODUCING COMPANY	Elevation 3698

Surface Location

UL or lot No.	Section	Township	Range	Lot Idn	Feet from the	North/South line	Feet from the	East/West line	County
1	13	19 S	33 E		1650	SOUTH	990	EAST	LEA

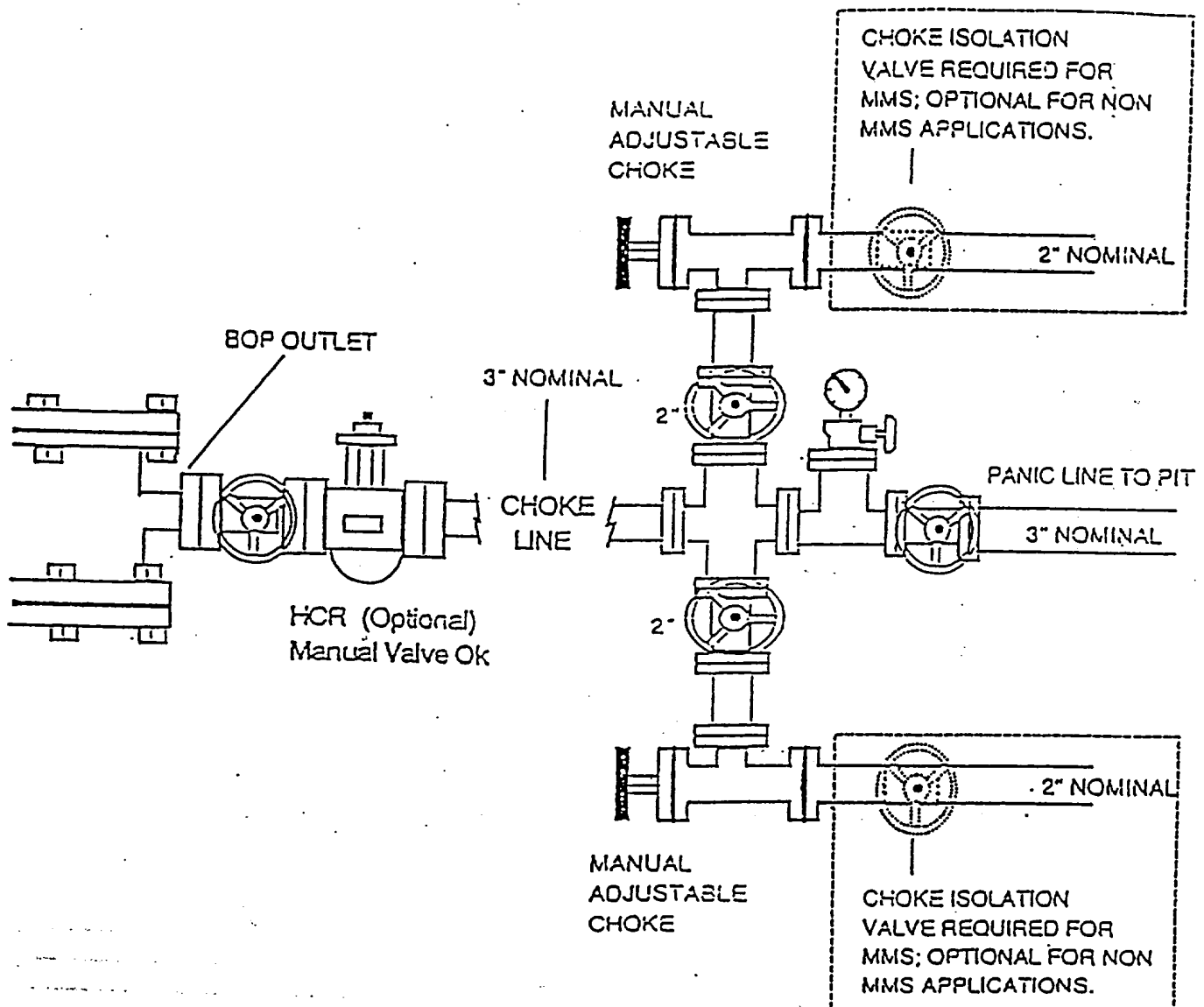
Bottom Hole Location If Different From Surface

UL or lot No.	Section	Township	Range	Lot Idn	Feet from the	North/South line	Feet from the	East/West line	County
Dedicated Acres 40	Joint or Infill N	Consolidation Code	Order No.						

NO ALLOWABLE WILL BE ASSIGNED TO THIS COMPLETION UNTIL ALL INTERESTS HAVE BEEN CONSOLIDATED
OR A NON-STANDARD UNIT HAS BEEN APPROVED BY THE DIVISION

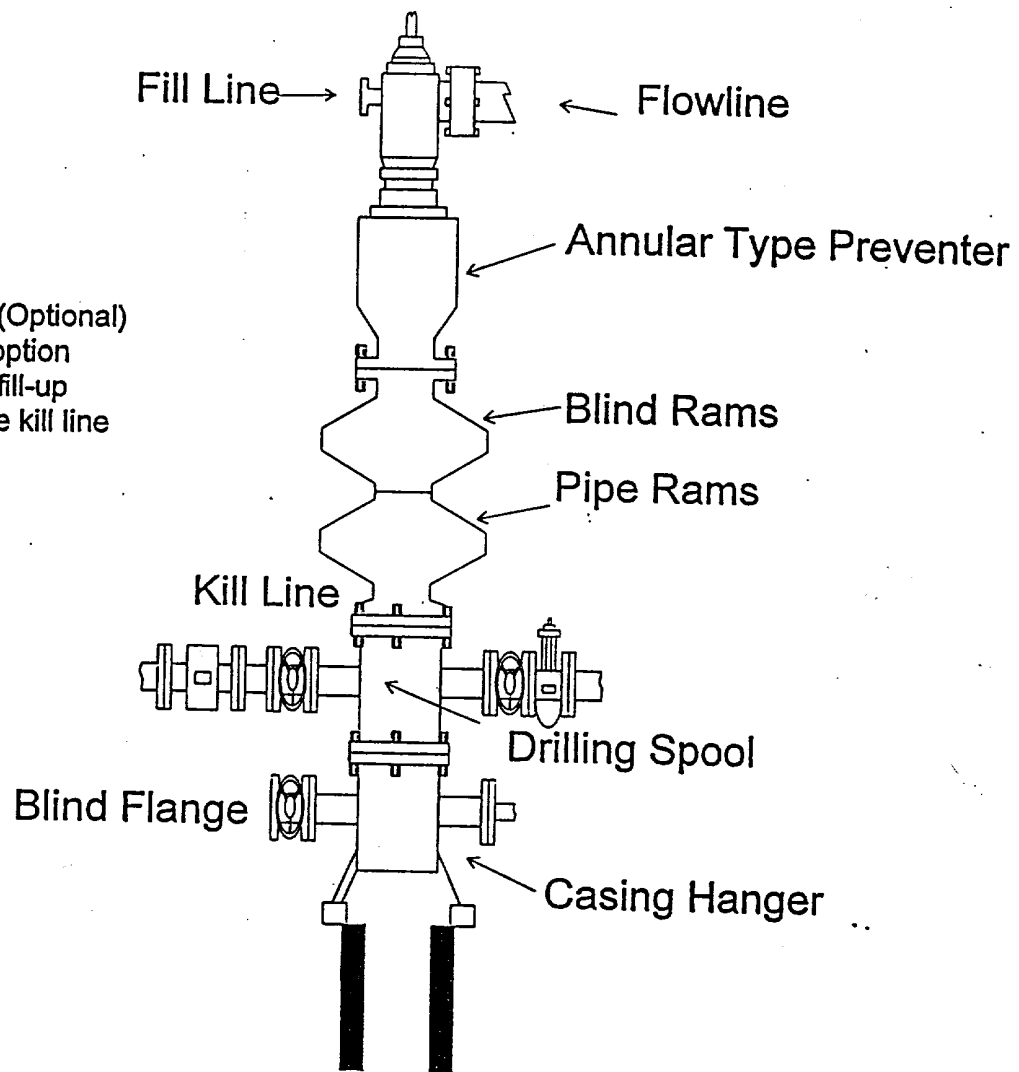
	OPERATOR CERTIFICATION <i>I hereby certify the the information contained herein is true and complete to the best of my knowledge and belief.</i> Signature Kim Stewart Printed Name Regulatory Analyst Title June 14, 2000 Date
	SURVEYOR CERTIFICATION <i>I hereby certify that the well location shown on this plat was plotted from field notes of actual surveys made by me or under my supervision, and that the same is true and correct to the best of my belief.</i> JUNE 8, 2000 Date Surveyed Signature & Seal of Professional Surveyor RONALD G. EDSON Certification No. RONALD G. EDSON 3239 GARY EDSON 12841 WILLIAM J. DONALD 12185

NEARBURG PRODUCING COMPANY
CHOKE MANIFOLD
2M AND 3M SERVICE



NEARBURG PRODUCING COMPANY
BOPE SCHEMATIC

Rotating Head (Optional)
Drilling Nipple option
must include a fill-up
line. Do not use kill line
for fill up.



900 Series

STATEMENT ACCEPTING RESPONSIBILITY FOR OPERATIONS

Nearburg Producing Company
3300 North "A" Street, Building 2, Suite 120
Midland, Texas 77905

The undersigned accepts all applicable terms, conditions, stipulations and restrictions covering operations conducted on the leased land or portion thereof, as described below:

Lease No: NM 24489

Legal Description of Land: 1650' FSL & 990' FEL
Section 13, T19S, R33E
Lea County, New Mexico


Formation(s) (if applicable): Bone Spring

Bond Coverage: \$25,000 statewide bond of Nearburg Producing Company

BLM Bond File No: NM1307

Date

6/22/00


H. R. Willis

Drilling Superintendent

**ATTACHMENT TO FORM 3160-3
PANAMA 13 FEDERAL #2
SECTION 13, T19S, R33E
LEA COUNTY, NEW MEXICO**

DRILLING PROGRAM

1. GEOLOGIC NAME OF SURFACE FORMATION

Red Bed

2. ESTIMATED TOPS OF IMPORTANT GEOLOGIC MARKERS

Ruslter	1550'	Bone Spring	7930'
Yates	3400'	T/1 st Bone Spring	9210'
Queen	4370'	TD	9900'
Delaware	6000'		

3. ESTIMATED DEPTHS OF ANTICIPATED FRESH WATER, OIL, OR GAS

Bone Spring Oil 9210'

4. CASING AND CEMENTING PROGRAM

<u>Casing Size</u>	<u>From</u>	<u>To</u>	<u>Weight</u>	<u>Grade</u>	<u>Joint</u>
13-3/8"	0'	1,550'	48#	J55	STC
8-5/8"	0'	1,000'	24#	J55	STC
	1,000'	3,300'	32#	J55	STC
5-1/2"	0'	3,300'	20#	N80	LTC
	3,300'	9,900'	17#	N80	LTC

Equivalent or adequate grades and weights of casing may be substituted at time casing is run, depending on availability.

We plan to drill a 17-1/2" hole to equal 1,550'. 13-3/8" casing will be cemented with 800 sxs Class "C" or volume necessary to bring cement back to surface.

11" hole will be drilled to 3,300' and 8-5/8" casing will be cemented with 1,000 sxs Class "C" or volume necessary to bring cement back to surface.

7-7/8" hole will be drilled to 9,900' and 5-1/2" production casing will be cemented with approximately 500 sxs of Class "H" cement covering productive zones.

5. MINIMUM SPECIFICATIONS FOR PRESSURE CONTROL

The BOP stack will consist of a 5,000 psi working pressure, dual ram type preventer and annular.

A BOP sketch is attached.

6. TYPES AND CHARACTERISTICS OF THE PROPOSED MUD SYSTEM

Spud and drill to 1,550' with fresh water mud for surface string. The intermediate section will be drilled with 10 ppg Brine water mud to 3,300'. Intermediate casing will be run at this depth. The production section from 3,300' to 9,900' will be 9.2 – 9.6 ppg cut Brine system with mud weight sufficient to control formation pressures.

7. AUXILIARY WELL CONTROL AND MONITORING EQUIPMENT

None required.

8. LOGGING, TESTING, AND CORING PROGRAM

DLL/CNL/LDT/CAL/GR logging is planned. Drill stem tests, cores and sidewall cores are possible.

9. ABNORMAL CONDITIONS, PRESSURES, TEMPERATURES & POTENTIAL HAZARDS

None anticipated.

BHP expected to be 3,500 psi.

10. ANTICIPATED STARTING DATE:

Is planned that operations will commence on September 16, 2000 with drilling and completion operation lasting about 45 day.

SURFACE USE AND OPERATIONS PLAN FOR
DRILLING, COMPLETION, AND PRODUCING

NEARBURG PRODUCING COMPANY
PANAMA 13 FEDERAL #2
SECTION 13-T19S-R33E
LEA COUNTY, NEW MEXICO

LOCATED

8 miles Northeast of Halfway, New Mexico

OIL & GAS LEASE

NM 24489

RECORD LESSEE

Nearburg Exploration Company, L.L.C., et al

BOND COVERAGE

\$25,000 statewide bond of Nearburg Producing Company

ACRES IN LEASE

520.00 acres

GRAZING LEASE

None

POOL

Gem; Bone Spring, East

EXHIBITS

- A. Area Road Map
- B. Drilling Rig Layout
- C. Vicinity Oil & Gas Map
- D. Topographic & Location Verification Map
- E. Well Location & Acreage Dedication Map

This well will be drilled to a depth of approximately 9,900'.

1. EXISTING ROADS

A. Exhibit A is a portion of a section map showing the location of the proposed well as staked.

B. Exhibit C is a plat showing existing roads in the vicinity of the proposed well site.

2. ACCESS ROADS

A. Length and Width

The access road will be built and is shown on Exhibit D.

B. Surface Material

Existing.

C. Maximum Grade

Less than five percent

D. Turnouts

None necessary.

E. Drainage Design

Existing.

F. Culverts

None necessary.

G. Gates and Cattle Guards

None needed.

3. LOCATION OF EXISTING WELLS

Existing wells in the immediate area are shown in Exhibit C.

4. LOCATION OF EXISTING AND/OR PROPOSED FACILITIES

Necessary production facilities for this well will be located on the well pad.

5. LOCATION AND TYPE OF WATER SUPPLY

It is not contemplated that a water well will be drilled. Water necessary for drilling will be purchased and hauled to the site over existing roads shown on Exhibit D.

6. METHODS OF HANDLING WASTE DISPOSAL

A. Drilling fluids will be allowed to evaporate in the drilling pits until the pits are dry.

B. Water produced during tests will be disposed of in the drilling pits.

C. Oil produced during tests will be stored in test tanks.

D. Trash will be contained in a trash trailer and removed from well site.

E. All trash and debris will be removed from the well site within 30 days after finishing drilling and/or completion operations.

7. ANCILLARY FACILITIES

None required.

8. WELL SITE LAYOUT

Exhibit B shows the relative location and dimensions of the well pad, mud pits, reserve pit, and trash pit, and the location of major rig components.

9. PLANS FOR RESTORATION OF THE SURFACE

A. After completion of drilling and/or completion operations, all equipment and other material not needed for operations will be removed. The well site will be cleaned of all trash and junk to leave the site in an as aesthetically pleasing condition as possible.

B. After abandonment, all equipment, trash, and junk will be removed and the site will be clean.

10. OTHER INFORMATION

A. Trenching

C. Flora and Fauna

The location is in an area sparsely covered with mesquite and range grasses.

D. Ponds and Streams

There are no rivers, lakes, ponds, or streams in the area.

E. Residences and Other Structures

There are no residences within a mile of the proposed well site.

F. Archaeological, Historical, and Cultural Sites

None observed on this area.

G. Land Use

Grazing

H. Surface Ownership

Bureau of Land Management

11. OPERATOR'S REPRESENTATIVE

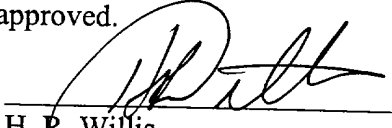
H. R. Willis
3300 North "A" Street, Bldg 2, Suite 120
Midland, Texas 79705
Office: (915) 686-8235
Home: (915) 697-2484

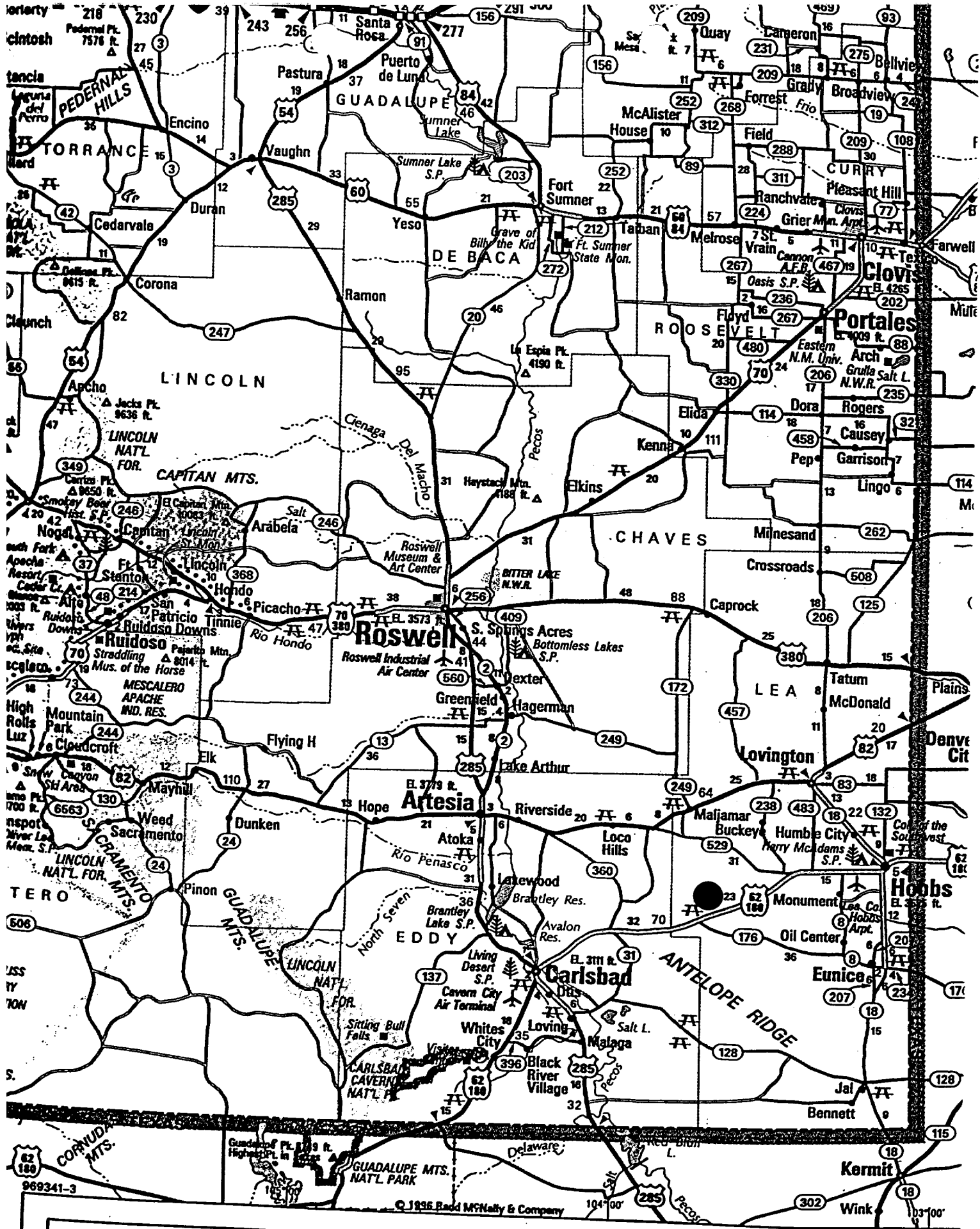
12. CERTIFICATION

I hereby certify that I, or persons under my direct supervision, have inspected the proposed drill site and access route; that I am familiar with the conditions which presently exist; that the statements made in this plan are, to the best of my knowledge, true and correct; and, that the work associated with the operations proposed herein will be performed by Nearburg Producing Company and its contractors and subcontractors in conformity with this plan and the terms and conditions under which it is approved.

Date

6/22/00


H. R. Willis
Drilling Superintendent



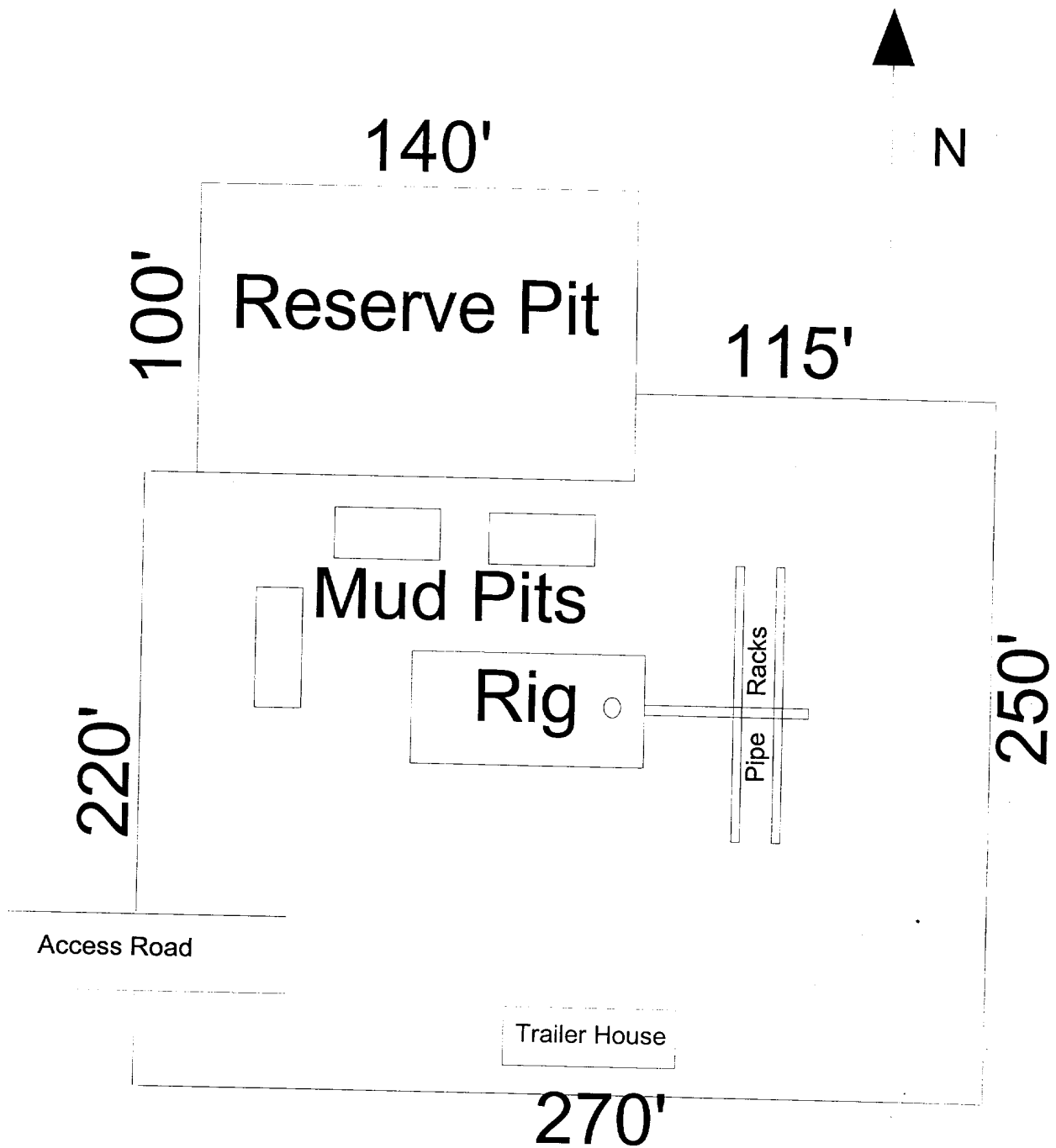
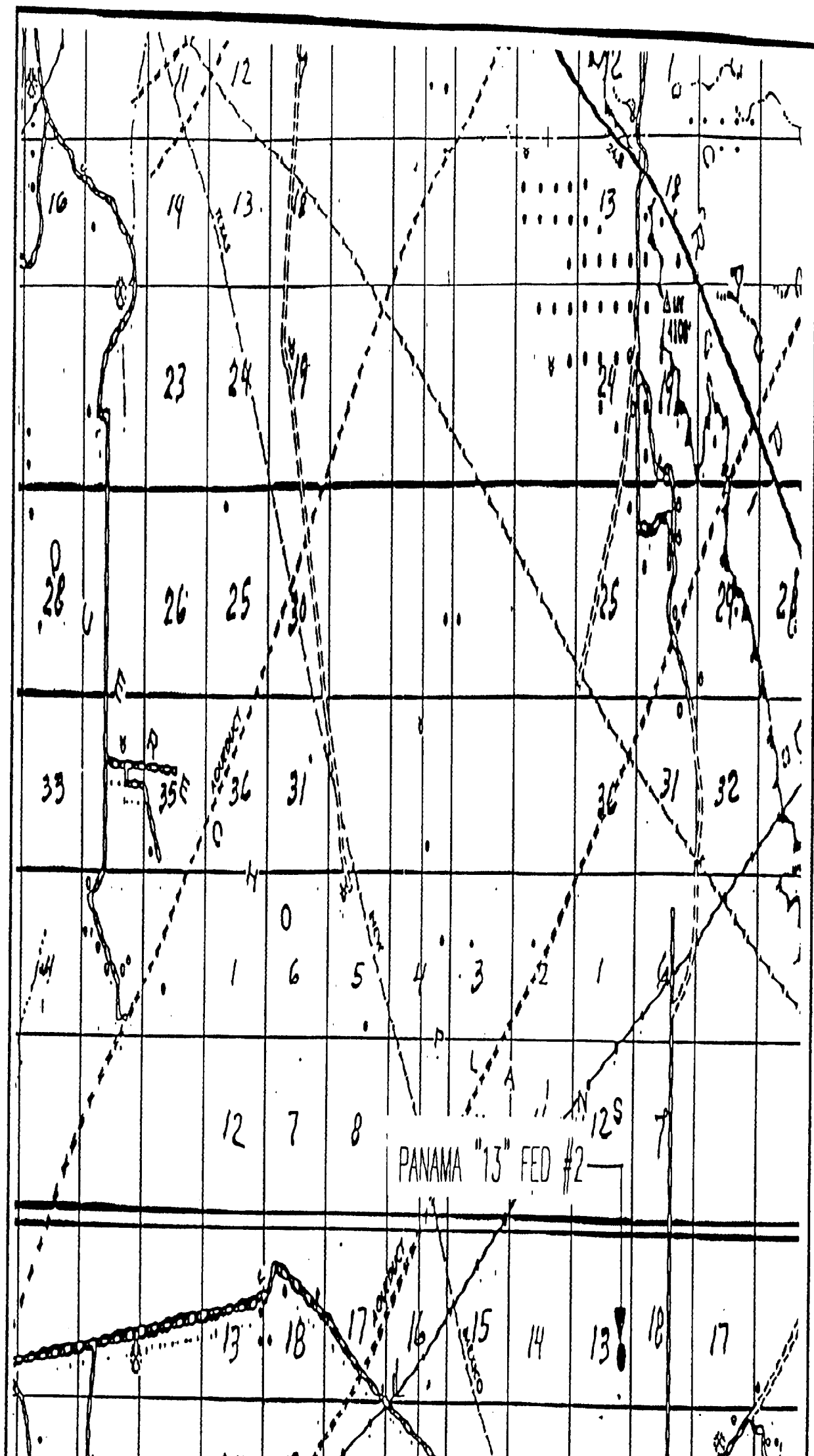
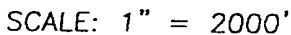


EXHIBIT B
DRILLING RIG LAYOUT
NEARBURG PRODUCING COMPANY
Panama 13 Federal #2
SCALE 1" = 50'

- VICINITY MAP -





SEC. 13 TWP. 19-S RGE. 33-E

SURVEY_____ N.M.P.M.

COUNTY _____ LEA

DESCRIPTION 1650' FSL & 990' FEL

ELEVATION 3698

NEARBURG
OPERATOR _____ PRODUCING COMPANY

LEASE PANAMA "13" FFD

U.S.G.S. TOPOGRAPHIC MAP

IRONHOUSE WELL, N.M.

JOHN WEST SURVEYING
HOBBS, NEW MEXICO
(505 393-3117

HYDROGEN SULFIDE DRILLING OPERATIONS PLANS

PAGE 2

2. H2S SAFETY EQUIPMENT AND SYSTEMS

Note: All H2S safety equipment and systems will be installed, tested and operational when drilling reaches a depth of 500 feet above, or three days prior to penetrating the first zone containing or reasonably expected to contain H2S.

A. Well Control Equipment:

1. Flare line with continuous pilot.
2. Choke manifold with a minimum of one remote choke.
3. Blind rams and pipe rams to accommodate all sizes with properly sized closing unit.
4. Auxiliary equipment to include: annular preventer, mud-gas separator, rotating head and flare gun with flares as needed.

B. Protective Equipment for Essential Personnel:

Mark II Surviveair 30-minute units located in the dog house and at briefing areas, as indicated on well site diagram.

C. H2S Detection and Monitoring Equipment:

1. Two portable H2S monitors positioned and location for best coverage and response. These units have warning lights and audible sirens when H2S levels of 20 ppm are reached.
2. One portable SO2 monitor positioned near flare line.

D. Visual Warning systems:

1. Wind direction indicators as shown on well site diagram.
2. Caution/Danger signs shall be posted on roads providing direct access to location. Signs will be painted a high visibility yellow with black lettering of sufficient size to be readable at a reasonable distance from the immediate location. Bilingual signs will be used when appropriate. See example attached.

HYDROGEN SULFIDE DRILLING OPERATIONS PLANS
PAGE 3

E. Mud Program

1. The Mud Program has been designed to minimize the volume of H₂S circulated to the surface. Proper mud weights, safe drilling practices and the use of H₂S scavengers will minimize hazards when penetrating H₂S bearing zones.
2. A mud-gas separator will be utilized as needed.

F. Metallurgy

All drill strings, casing, tubing, wellhead, blowout preventers, drilling spool, kill lines, choke manifold and line and valves shall be suitable for H₂S service.

G. Communication

1. Cellular telephone communications in company vehicles and mud logging trailer.
2. Land line (telephone) communications at area office.

H. Well Testing

Drill stem testing will be performed with a minimum number of personnel in the immediate vicinity, which are necessary to safely and adequately conduct the test. The drill stem testing in an H₂S environment will be conducted during the daylight hours.

WARNING

**YOU ARE ENTERING A H2S AREA
AUTHORIZED PERSONNEL ONLY**

1. BEARDS OR CONTACT LENSES NOT ALLOWED
2. HARD HATS REQUIRED
3. SMOKING IN DESIGNATED AREAS ONLY
4. BE WIND CONSCIOUS AT ALL TIMES
5. CHECK WITH NEARBURG SUPERINTENDENT AT MAIN OFFICE

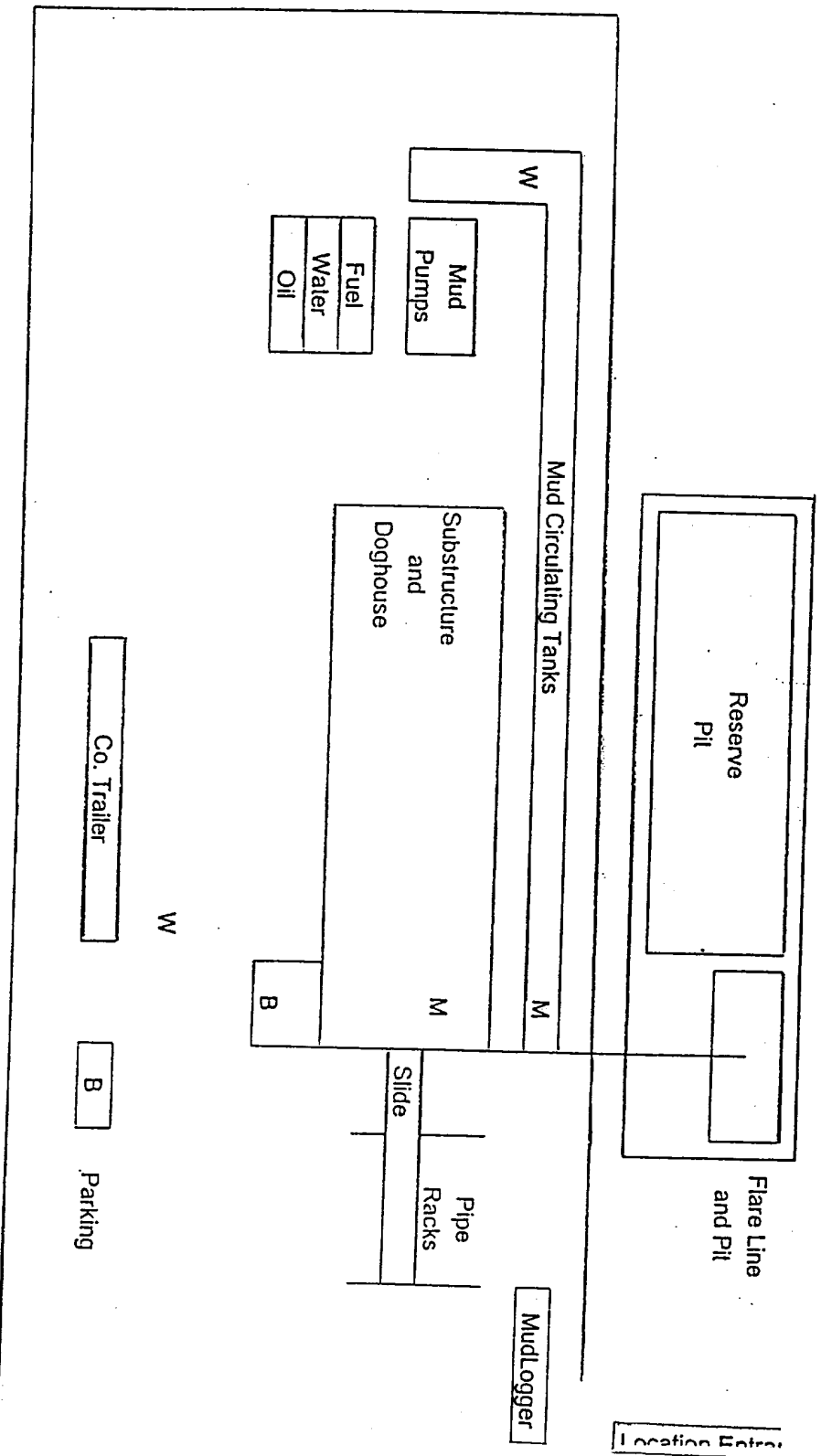
NEARBURG PRODUCING COMPANY

(915) 686-8235

NEARBURG PRODUCING COMPANY HYDROGEN SULFIDE DRILLING OPERATIONS LOCATION PLAN

- M - H2S Monitors with alarms at bell nipple and shale shaker
- W - Wind Direction Indicators
- B - Safe Briefing areas with caution signs and protective breathing equipment.
Minimum 150' from wellhead.

Prevailing Wind Directions: Summer - South/Southwest
Winter - North/Northwest



ELF
1/13/01
ABOVE DATE DOES NOT
INDICATE WHEN
CONFIDENTIAL LOSS
WILL BE RELEASED