

District I  
PO Box 1980, Hobbs, NM 88241-1980

District II  
811 South First, Artesia, NM 88210

District III  
1000 Rio Brazos Rd., Aztec, NM 87410

District IV  
2040 South Pacheco, Santa Fe, NM 87505

State of New Mexico  
Energy, Minerals & Natural Resources Department

OIL CONSERVATION DIVISION  
2040 South Pacheco  
Santa Fe, NM 87505

Form C-101  
Revised October 18, 1994  
Instructions on back  
Submit to Appropriate District Office  
State Lease - 6 Copies  
Fee Lease - 5 Copies

AMENDED REPORT

APPLICATION FOR PERMIT TO DRILL, RE-ENTER, DEEPEN, PLUGBACK, OR ADD A ZONE

Operator Name and Address Nearburg Producing Company 3300 North "A" Street Building 2, Suite 120 Midland, TX 79705		OGRID Number 015742
		API Number 30 - 025-35320
Property Code 27051	Property Name New York "14"	Well No. 1

Surface Location

UL or lot no.	Section	Township	Range	Lot Idn	Feet from the	North/South line	Feet from the	East/West Line	County
L	14	17S	37E		2130	South	660	West	Lea

Proposed Bottom Hole Location If Different From Surface

UL or lot no.	Section	Township	Range	Lot Idn	Feet from the	North/South line	Feet from the	East/West Line	County
Proposed Pool 1 Humble City; Strawn, Southwest					Proposed Pool 2				

Work Type Code N	Well Type Code O	Cable/Rotary R	Lease Type Code P	Ground Level Elevation 3744
Multiple No	Proposed Depth 11750	Formation Strawn	Contractor UTI #306	Spud Date 02-15-01

Proposed Casing and Cement Program

Hole Size	Casing Size	Casing weight/foot	Setting Depth	Sacks of Cement	Estimated TOC
17-1/2"	13-3/8"	48#	400'	400 sxs	Surface
11"	8-5/8"	32#	4650'	500 sxs	
7-7/8"	5-1/2"	17#	11,750'	500 sxs	

Describe the proposed program. If this application is to DEEPEN or PLUG BACK give the data on the present productive zone and proposed new productive zone. Describe the blowout prevention program, if any. Use additional sheets if necessary.

Propose to drill the well to sufficient depth to evaluate the Strawn formation. After reaching TD, logs will be run and casing set if the evaluation is positive. Perforate, test and stimulate as necessary to establish production.

Acreage dedication is 80 acres; W/2 of the SW, of Section 14.

The location has been corrected from 2310' FSL and 660' FWL to 2130' FSL and 660' FWL, Lea County, New Mexico. New corrected plat attached (C-102).

I hereby certify that the information given above is true and complete to the best of my knowledge and belief.		<b>OIL CONSERVATION DIVISION</b>	
Signature: <i>Kim Stewart</i>		Approved By: <i>[Signature]</i>	
Printed name: Kim Stewart		Title: <i>[Signature]</i>	
Title: Regulatory Analyst		Approval Date: <i>[Signature]</i>	Expiration Date:
Date: 01-04-01	Phone: 915/686-8235	Conditions of Approval: Attached: <input type="checkbox"/>	

103

*[Handwritten initials]*

DISTRICT I  
P.O. Box 1980, Hobbs, NM 88241-1980

State of New Mexico  
Energy, Minerals and Natural Resources Department

Form C-102  
Revised February 10, 1994  
Submit to Appropriate District Office  
State Lease - 4 Copies  
Fee Lease - 3 Copies

DISTRICT II  
P.O. Drawer DD, Artesia, NM 88211-0719

OIL CONSERVATION DIVISION  
P.O. Box 2088  
Santa Fe, New Mexico 87504-2088

DISTRICT III  
1000 Rio Brazos Rd., Artec, NM 87410

DISTRICT IV  
P.O. BOX 2088, SANTA FE, N.M. 87504-2088

AMENDED REPORT

WELL LOCATION AND ACREAGE DEDICATION PLAT

API Number <b>30-025-35320</b>	Pool Code 96558	Pool Name Humble City; Strawn, Southwest
Property Code <b>27051</b>	Property Name NEW YORK "14"	Well Number 1
OGRID No. 15742	Operator Name NEARBURG PRODUCING CO.	Elevation 3746

Surface Location

UL or lot No.	Section	Township	Range	Lot Idn	Feet from the	North/South line	Feet from the	East/West line	County
L	14	17S	37E		2130	SOUTH	660	WEST	LEA

Bottom Hole Location If Different From Surface

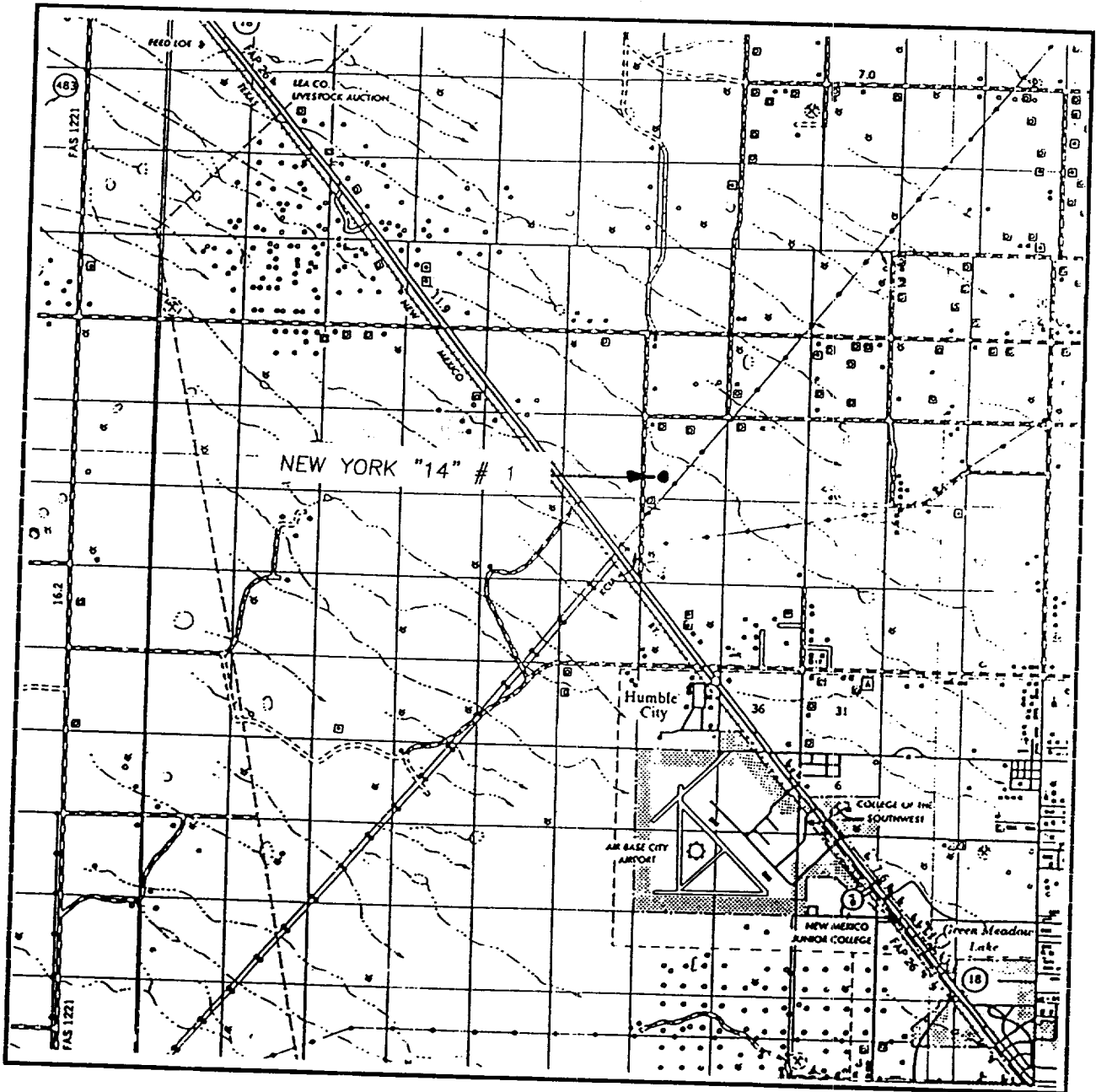
UL or lot No.	Section	Township	Range	Lot Idn	Feet from the	North/South line	Feet from the	East/West line	County

Dedicated Acres 80	Joint or Infill N	Consolidation Code	Order No.
-----------------------	----------------------	--------------------	-----------

NO ALLOWABLE WILL BE ASSIGNED TO THIS COMPLETION UNTIL ALL INTERESTS HAVE BEEN CONSOLIDATED OR A NON-STANDARD UNIT HAS BEEN APPROVED BY THE DIVISION

	<p>OPERATOR CERTIFICATION</p> <p>I hereby certify the the information contained herein is true and complete to the best of my knowledge and belief.</p> <p><i>Kim Stewart</i> Signature</p> <p>Kim Stewart Printed Name</p> <p>Regulatory Analyst Title</p> <p>01/04/01 Date</p>		
	<p>SURVEYOR CERTIFICATION</p> <p>I hereby certify that the well location shown on this plat was plotted from field notes of actual surveys made by me or under my supervision, and that the same is true and correct to the best of my belief.</p> <p>DECEMBER 29, 2000</p> <p>Date Surveyed _____</p> <p>Signature of Seal _____</p> <p>Professional Surveyor</p> <p><i>Ronald E. Kidson</i> 01/03/01</p> <p>3239</p> <p>00-1-1544</p>		
	<p>Certificate No. RONALD E. KIDSON 3239 HART KIDSON 12841</p>		
	<p>REGISTERS OF PROFESSIONAL SURVEYORS NEW MEXICO</p>		

# VICINITY MAP



SCALE: 1" = 2 MILES

SEC. 14 TWP. 17-S RGE. 37E

SURVEY N.M.P.M.

COUNTY LEA

DESCRIPTION 2130'FSL & 660'FWL

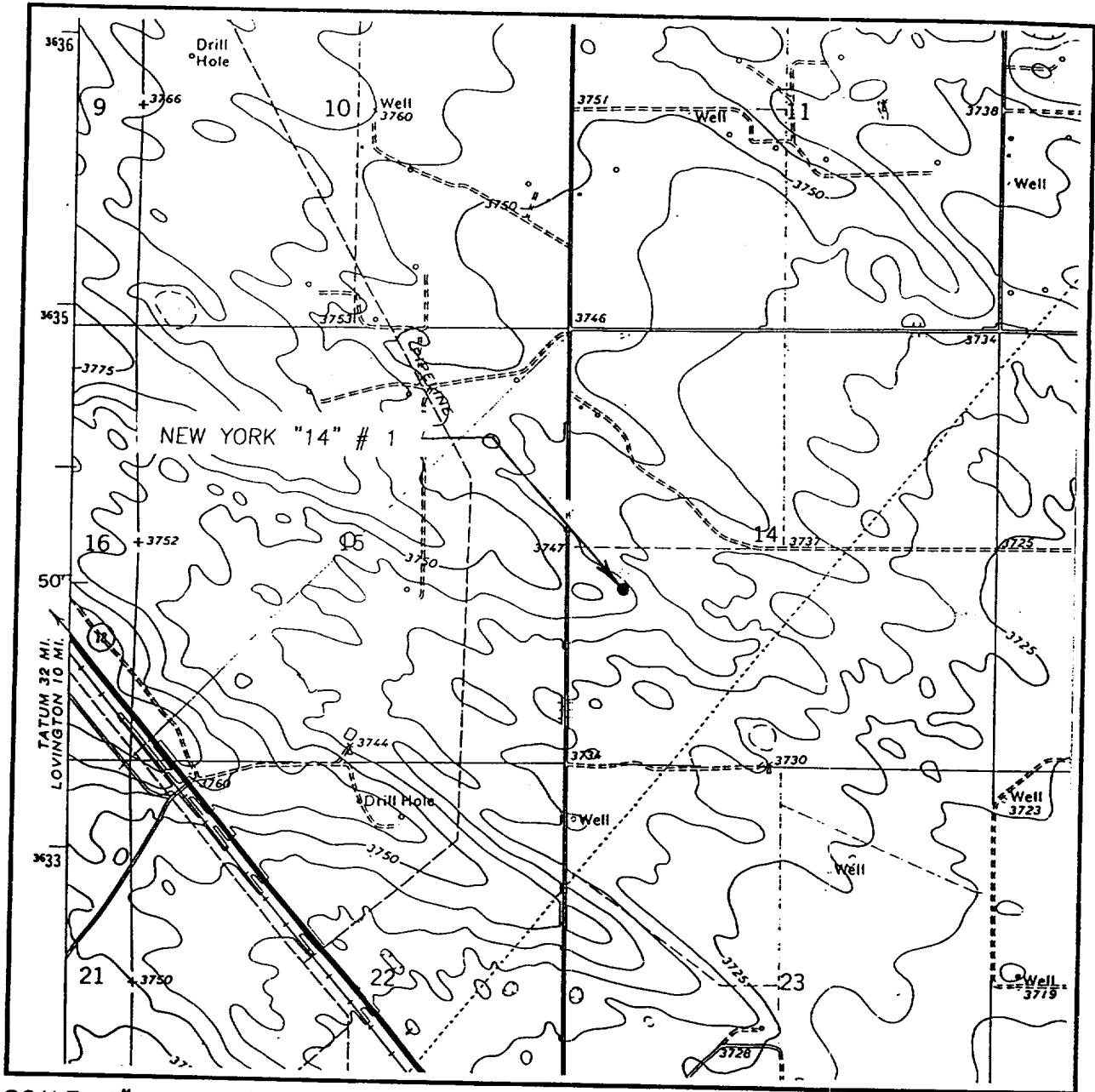
ELEVATION 3746

OPERATOR NEARBURG PRODUCING COMPANY

LEASE NEW YORK "14"

JOHN WEST SURVEYING  
HOBBS, NEW MEXICO  
(505) 393-3117

# LOCATION VERIFICATION MAP



SCALE: 1" = 2000'

CONTOUR INTERVAL: 10'  
HUMBLE CITY, N.M.

SEC. 14 TWP. 17-S RGE. 37E

SURVEY \_\_\_\_\_ N.M.P.M.

COUNTY \_\_\_\_\_ LEA

DESCRIPTION 2130' FSL & 660' FWL

ELEVATION 3746

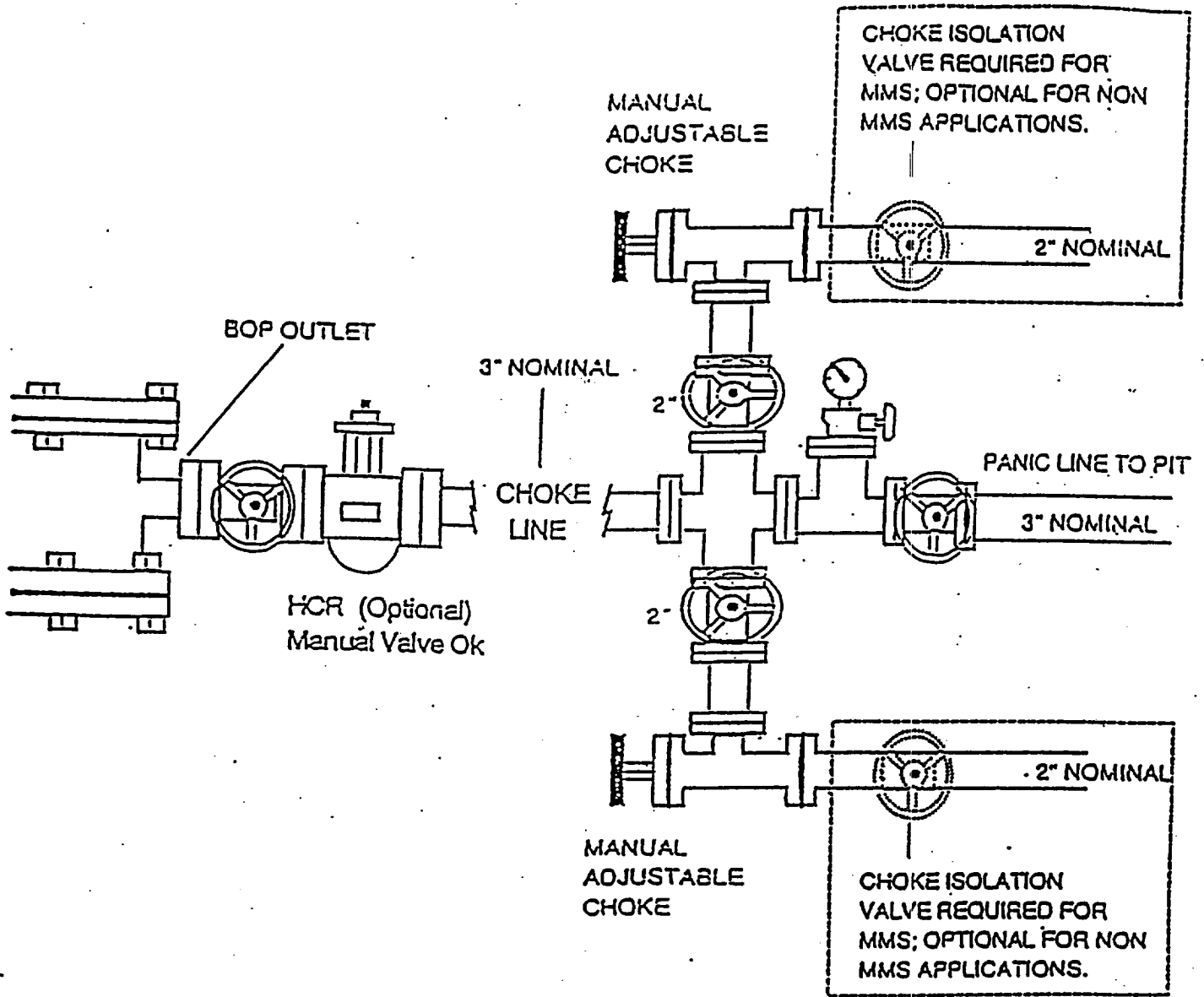
OPERATOR NEARBURG PRODUCING COMPANY

LEASE NEW YORK "14"

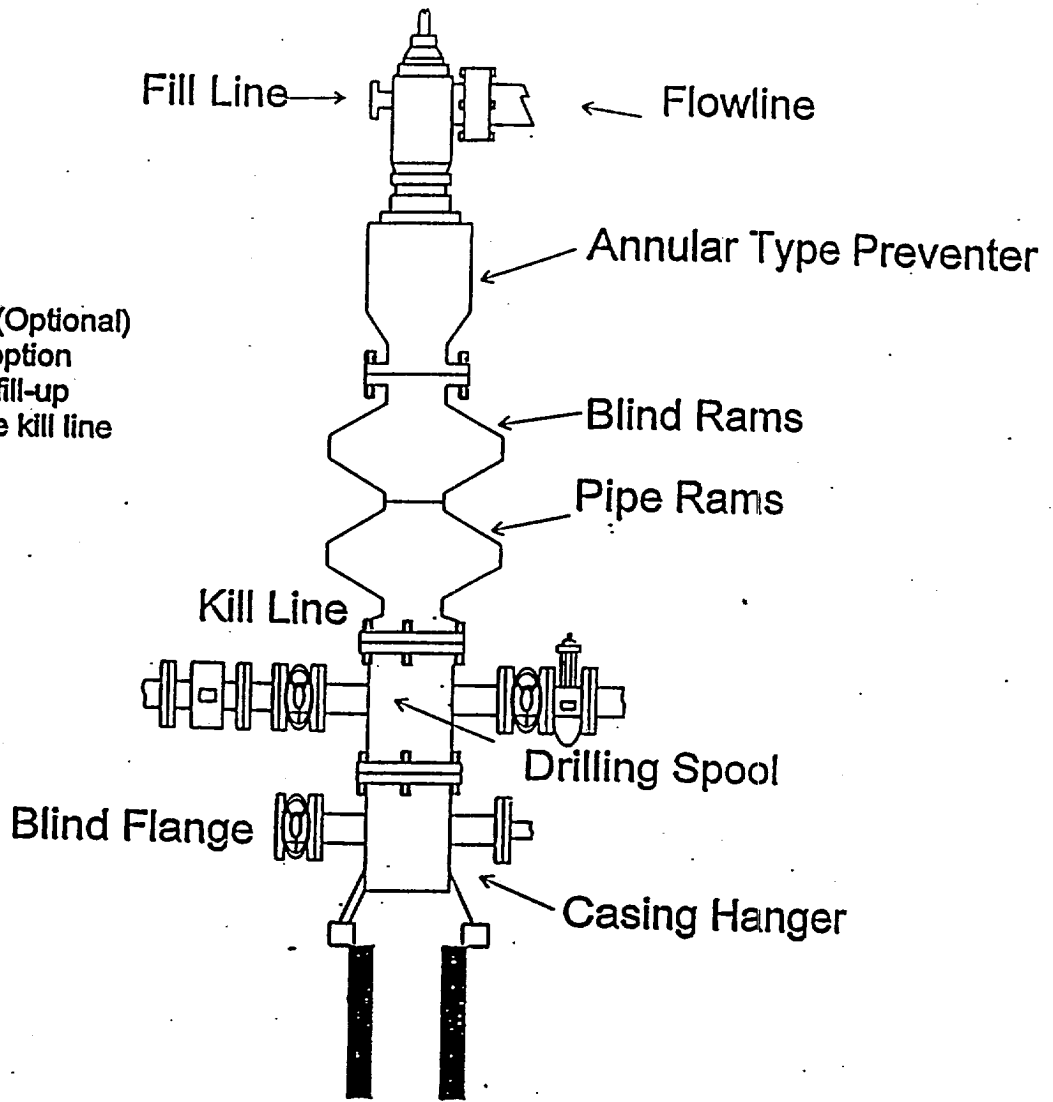
U.S.G.S. TOPOGRAPHIC MAP  
HUMBLE CITY, N.M.

JOHN WEST SURVEYING  
HOBBS, NEW MEXICO  
(505) 393-3117

NEARBURG PRODUCING COMPANY  
CHOKE MANIFOLD  
5M SERVICE



# BOPE SCHEMATIC



Rotating Head (Optional)  
Drilling Nipple option  
must include a fill-up  
line. Do not use kill line  
for fill up.

1500 Series