

District I
PO Box 1980, Hobbs, NM 88241-1980

District II
811 South First, Artesia, NM 88210

District III
1000 Rio Brazos Rd., Aztec, NM 87410

District IV
2040 South Pacheco, Santa Fe, NM 87505

State of New Mexico
Energy, Minerals & Natural Resources Department

OIL CONSERVATION DIVISION
2040 South Pacheco
Santa Fe, NM 87505

Form C-101
Revised October 18, 1994
Instructions on back
Submit to Appropriate District Office
State Lease - 6 Copies
Fee Lease - 5 Copies

☐ AMENDED REPORT

APPLICATION FOR PERMIT TO DRILL, RE-ENTER, DEEPEN, PLUGBACK, OR ADD A ZONE

Operator Name and Address Nearburg Producing Company 3300 North "A" Street Building 2, Suite 120 Midland, TX 79705		OGRID Number 015742
		API Number 30 - 025-35320
Property Code 27051	Property Name New York "14"	Well No. 1

Surface Location

UL or lot no.	Section	Township	Range	Lot Idn	Feet from the	North/South line	Feet from the	East/West Line	County
L	14	17S	37E		2310	South	660	West	Lea

Proposed Bottom Hole Location If Different From Surface

UL or lot no.	Section	Township	Range	Lot Idn	Feet from the	North/South line	Feet from the	East/West Line	County
Proposed Pool 1 Humble City; Strawn, Southwest					Proposed Pool 2				

Work Type Code N	Well Type Code O	Cable/Rotary R	Lease Type Code P	Ground Level Elevation 3744
Multiple No	Proposed Depth 11750	Formation Strawn	Contractor UTI #306	Spud Date 02-15-01

Proposed Casing and Cement Program

Hole Size	Casing Size	Casing weight/foot	Setting Depth	Sacks of Cement	Estimated TOC
17-1/2"	13-3/8"	48#	400'	400 sxs	Surface
11"	8-5/8"	32#	4650'	500 sxs	
7-7/8"	5-1/2"	17#	11,750'	500 sxs	

Describe the proposed program. If this application is to DEEPEN or PLUG BACK give the data on the present productive zone and proposed new productive zone. Describe the blowout prevention program, if any. Use additional sheets if necessary.

Propose to drill the well to sufficient depth to evaluate the Strawn formation. After reaching TD, logs will be run and casing set if the evaluation is positive. Perforate, test and stimulate as necessary to establish production.

Acreage dedication is 80 acres; W/2 of the SW, of Section 14.

Permit Expires 1 Year From Approval
Date Unless Drilling Underway

I hereby certify that the information given above is true and complete to the best of my knowledge and belief.

Signature:

Printed name:

Kim Stewart

Title:

Regulatory Analyst

Date:

12-21-00

Phone:

915/686-8235

OIL CONSERVATION DIVISION

Approved By:

Title:

Approval Date:

Expiration Date:

Conditions of Approval:

Attached: ☐

DISTRICT II
P.O. Drawer DP, Artesia, NM 88211-0719

DISTRICT III
1000 Rio Brazos Rd., Aztec, NM 87410

DISTRICT IV
P.O. BOX 2088, SANTA FE, N.M. 87504-2088

OIL CONSERVATION DIVISION
P.O. Box 2088
Santa Fe, New Mexico 87504-2088

☐ AMENDED REPORT

WELL LOCATION AND ACREAGE DEDICATION PLAT

API Number 30-025-35320	Pool Code 96558	Pool Name Humble City; Strawn, Southwest
Property Code 27051	Property Name NEW YORK "14"	Well Number 1
GRID No. 15742	Operator Name NEARBURG PRODUCING CO.	Elevation 3744

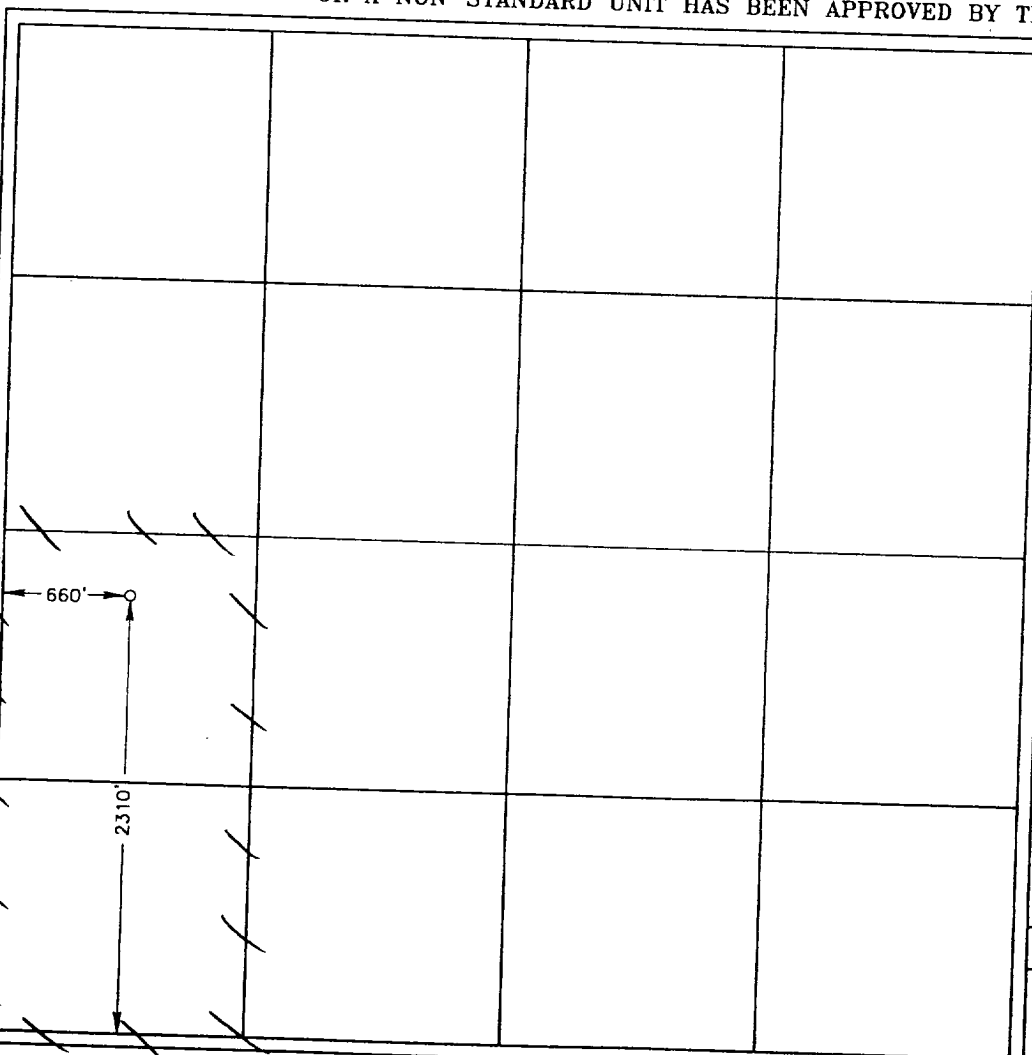
Surface Location

UL or lot No.	Section	Township	Range	Lot Idn	Feet from the	North/South line	Feet from the	East/West line	County
L	14	17S	37E		2310	SOUTH	660	WEST	LEA

Bottom Hole Location If Different From Surface

UL or lot No.	Section	Township	Range	Lot Idn	Feet from the	North/South line	Feet from the	East/West line	County
Dedicated Acres 80	Joint or Infill N	Consolidation Code	Order No.						

NO ALLOWABLE WILL BE ASSIGNED TO THIS COMPLETION UNTIL ALL INTERESTS HAVE BEEN CONSOLIDATED
OR A NON-STANDARD UNIT HAS BEEN APPROVED BY THE DIVISION



OPERATOR CERTIFICATION

I hereby certify the the information
contained herein is true and complete to the
best of my knowledge and belief.

Kim Stewart
Signature

Kim Stewart
Printed Name

Regulatory Analyst
Title

December 21, 2000
Date

SURVEYOR CERTIFICATION

I hereby certify that the well location shown
on this plat was plotted from field notes of
actual surveys made by me or under my
supervision and that the same is true and
correct to the best of my belief.

DECEMBER 6, 2000

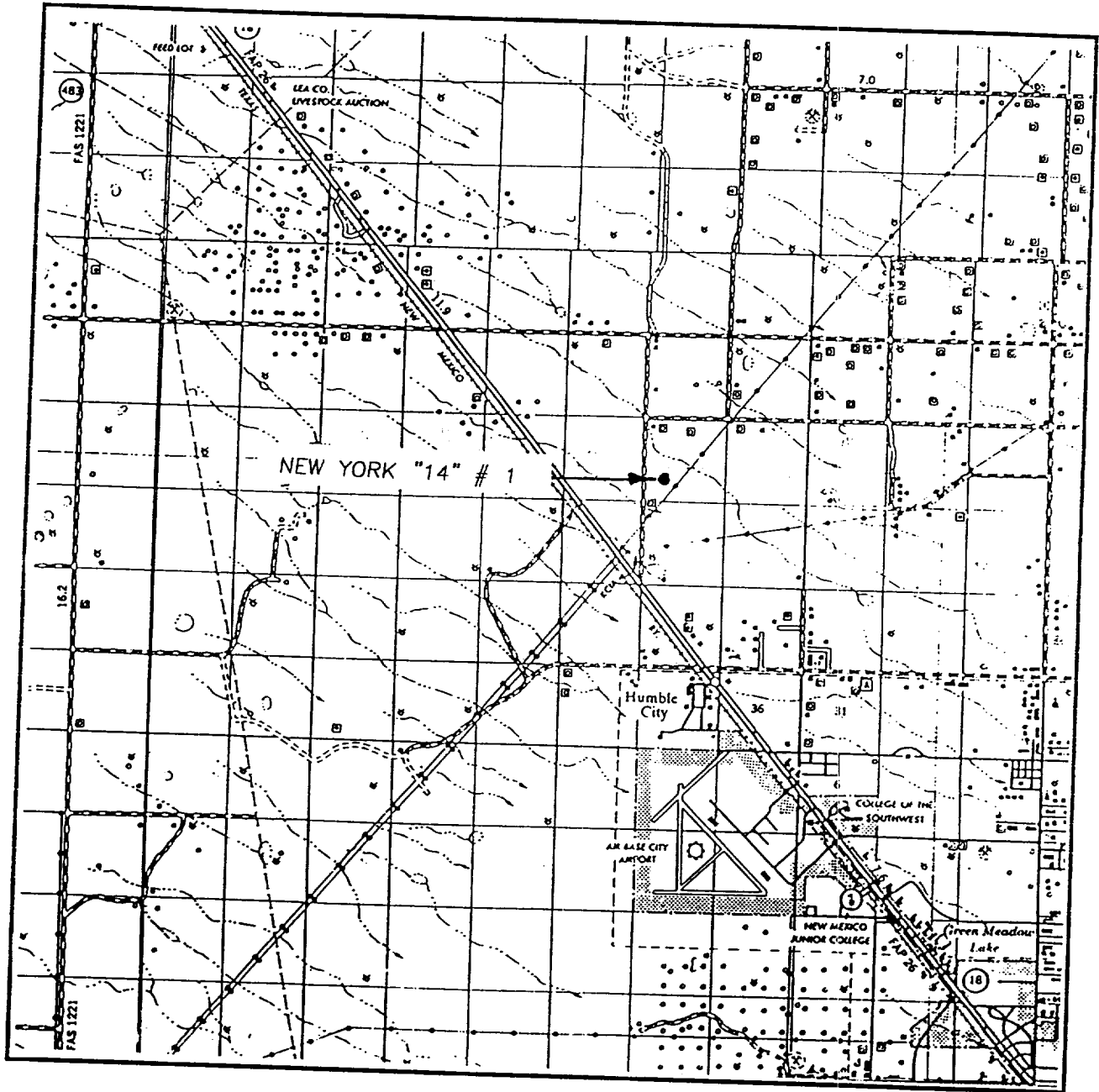
Date Surveyed _____ AWB

Signature & Seal of
Professional Surveyor

Gary E. Edson
GARY E. EDSON
00-11-1544
12/13/00

Certificate No. RONALD J. EDSON 3239
GARY E. EDSON 12641

VICINITY MAP



SCALE: 1" = 2 MILES

SEC. 14 TWP. 17-S RGE. 37E

SURVEY N.M.P.M.

COUNTY LEA

DESCRIPTION 2310'FSL & 660'FWL

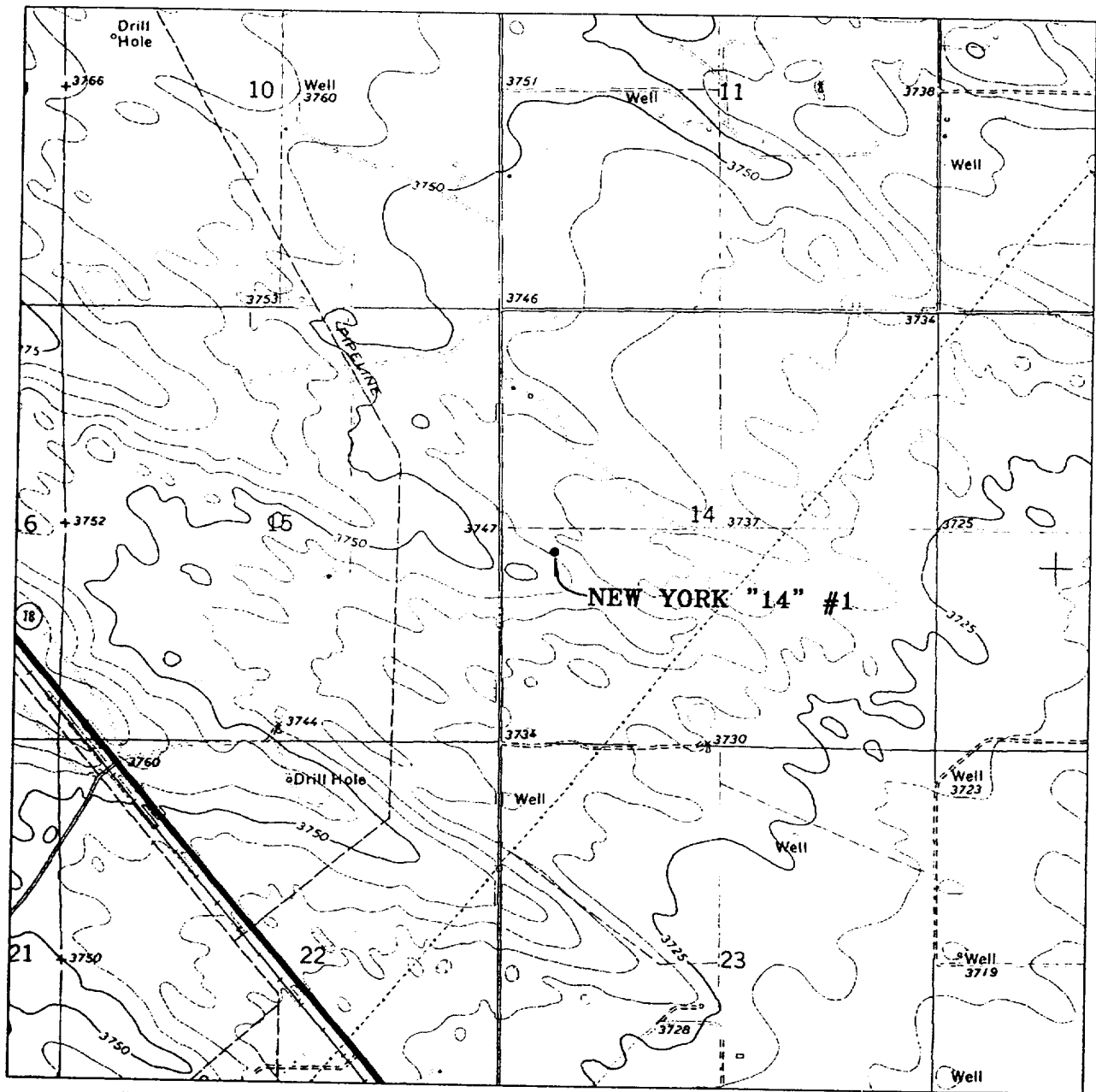
ELEVATION 3744

OPERATOR NEARBURG PRODUCING COMPANY

LEASE NEW YORK "14"

JOHN WEST SURVEYING
HOBBS, NEW MEXICO
(505) 393-3117

LOCATION VERIFICATION MAP



SCALE: 1" = 2000'

CONTOUR INTERVAL: 5'
HUMBLE CITY, N.M.

SEC. 14 TWP. 17-S RGE. 37-E

SURVEY N.M.P.M.

COUNTY LEA

DESCRIPTION 2310' FSL & 660' FWL

ELEVATION 3744

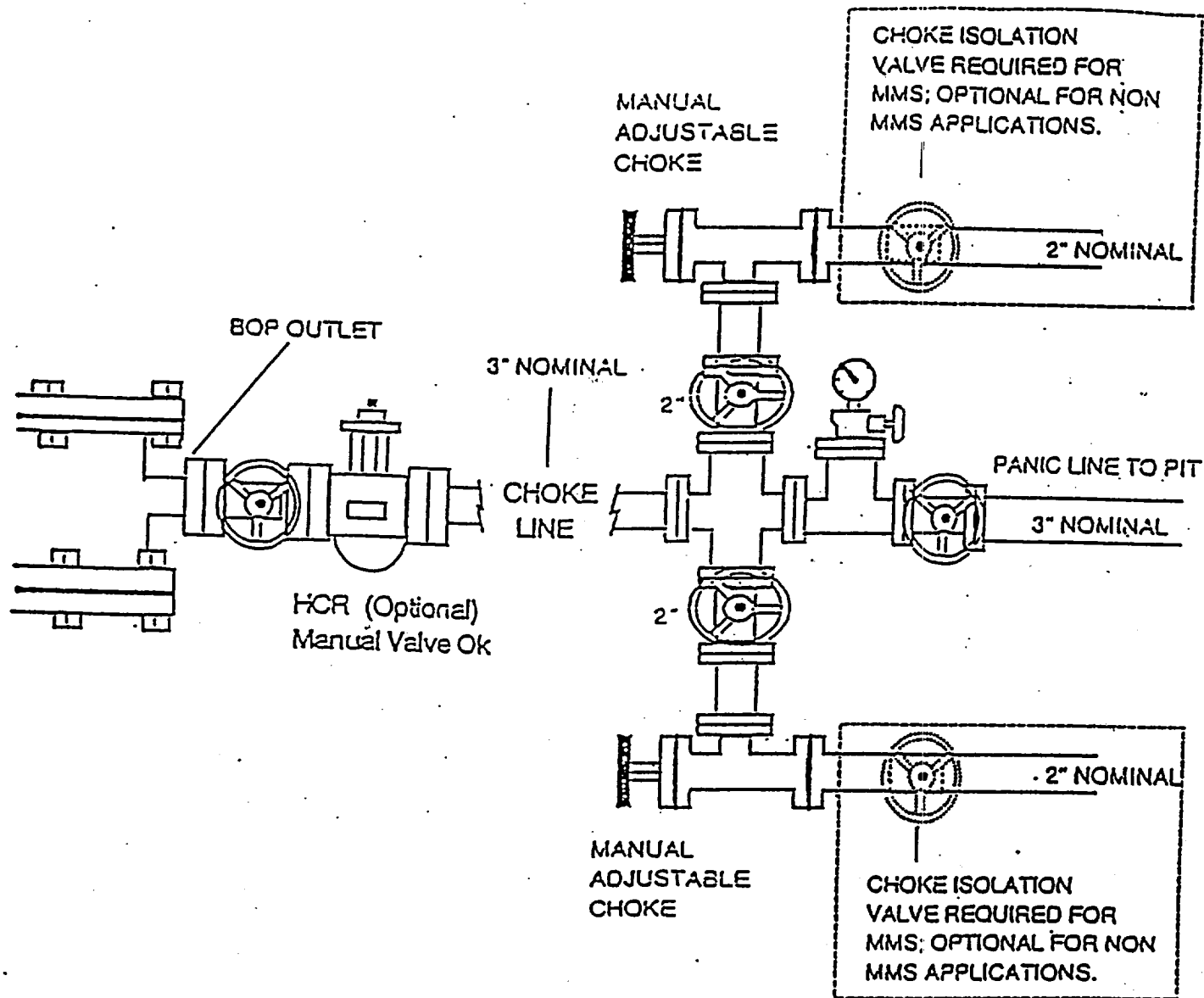
OPERATOR NEARBURG PRODUCING COMPANY

LEASE NEW YORK "14"

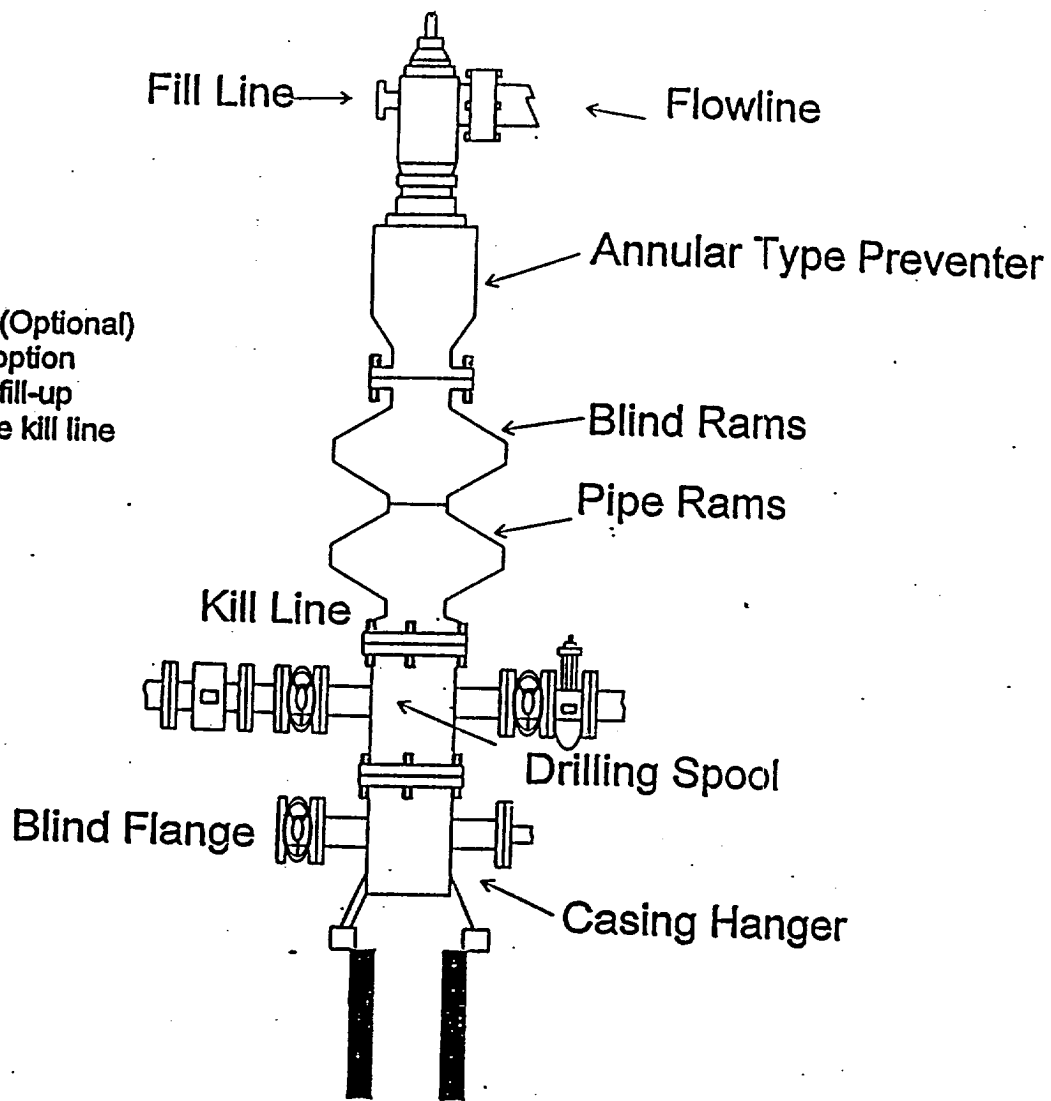
U.S.G.S. TOPOGRAPHIC MAP
HUMBLE CITY, N.M.

JOHN WEST SURVEYING
HOBBS, NEW MEXICO
(505) 393-3117

TEARBURG PRODUCING COMP, Y
CHOKE MANIFOLD
5M SERVICE



Rotating Head (Optional)
Drilling Nipple option
must include a fill-up
line. Do not use kill line
for fill up.



ELF

ABOVE DATE DOES NOT
INDICATE WHEN
CONFIDENTIAL LOGS
WILL BE RELEASED