

DISTRICT I
P.O. Box 1980, Hobbs, NM 88240

DISTRICT II
P.O. Drawer DD, Artesia, NM 88210

DISTRICT III
1000 Rio Brazos Rd., Aztec, NM 87410

OIL CONSERVATION DIVISION

2040 Pacheco St.
Santa Fe, NM 87505

WELL API NO. 30-025-35337
Indicate Type of Lease STATE <input type="checkbox"/> FEE <input checked="" type="checkbox"/>
State Oil & Gas Lease No.

SUNDRY NOTICES AND REPORTS ON WELLS (DO NOT USE THIS FORM FOR PROPOSALS TO DRILL OR TO DEEPEN OR PLUG BACK TO A DIFFERENT RESERVOIR. USE "APPLICATION FOR PERMIT" (FORM C-101) FOR SUCH PROPOSALS.)	
1. Type of Well: OIL WELL <input checked="" type="checkbox"/> GAS WELL <input type="checkbox"/> OTHER <input type="checkbox"/>	7. Lease Name or Unit Agreement Name Weststar "13"
2. Name of Operator Nearburg Producing Company	8. Well No. 1
3. Address of Operator 3300 N A St., Bldg 2, Suite 120, Midland, TX 79705	9. Pool name or Wildcat South Humble City, Strawn
4. Well Location Unit Letter <u>B</u> : <u>280</u> Feet From The <u>North</u> Line and <u>2450</u> Feet From The <u>East</u> Line Section <u>13</u> Township <u>17S</u> Range <u>37E</u> NMPM <u>Lea</u> County	
5. Elevation (Show whether DF, RKB, RT, GR, etc.) 3723' GR	

11

Check Appropriate Box to Indicate Nature of Notice, Report, or Other Data

NOTICE OF INTENTION TO:

PERFORM REMEDIAL WORK ☐ PLUG AND ABANDON ☐
TEMPORARILY ABANDON ☐ CHANGE PLANS ☐
PULL OR ALTER CASING ☐
OTHER: Change Location ☒

SUBSEQUENT REPORT OF:

REMEDIAL WORK ☐ ALTERING CASING ☐
COMMENCE DRILLING OPNS. ☐ PLUG AND ANBANDONMENT ☐
CASING TEST AND CEMENT JOB ☐
OTHER: ☐

12. Describe Proposed or Completed Operations (Clearly state all pertinent details, and give pertinent dates, including estimated date of starting any proposed work) SEE RULE 1103.

Nearburg Producing Company requests permission to change surface location on the above referenced well from 330' FNL and 2350' FEL, Section 13, T17S, R37E, Unit B to 280' FNL and 2450' FEL, Section 13, T17S, R37E, Unit B. The BHL will remain the same (510' FNL and 2250' FEL, Section 13, T17S, R37E, Unit B).

(Attached C-102)

I hereby certify that the information above is true and complete to the best of my knowledge and belief.

SIGNATURE Kim Stewart TITLE Regulatory Analyst DATE 03-22-01
TYPE OR PRINT NAME Kim Stewart TELEPHONE NO. 915/686-8235

(This space for State Use)

APPROVED BY

ORIGINAL SIGNATURE OF DISTRICT SUPERVISOR
TITLE

MAR 29 2001
DATE

CONDITIONS OF APPROVAL, IF ANY:

3
25

✓

DISTRICT I
P.O. Box 1980, Hobbs, NM 88241-1980

State of New Mexico
Energy, Minerals and Natural Resources Department

Form C-102
Revised February 10, 1994
Submit to Appropriate District Office
State Lease - 4 Copies
Fee Lease - 3 Copies

DISTRICT II
P.O. Drawer DD, Artesia, NM 88211-0719

DISTRICT III
1000 Rio Brazos Rd., Artec, NM 87410

DISTRICT IV
P.O. BOX 2088, SANTA FE, N.M. 87504-2088

OIL CONSERVATION DIVISION

P.O. Box 2088
Santa Fe, New Mexico 87504-2088

☐ AMENDED REPORT

WELL LOCATION AND ACREAGE DEDICATION PLAT

API Number 30-025-35 337	Pool Code 33500	Pool Name Humble City; Strawn, South
Property Code 27107	Property Name WESTSTAR"13"	Well Number 1
OGRID No. 15742	Operator Name NEARBURG PRODUCING CO.	Elevation 3723'

Surface Location

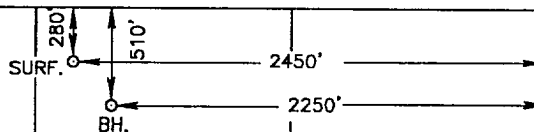
UL or lot No. B	Section 13	Township 17-S	Range 37-E	Lot Idn	Feet from the 280	North/South line NORTH	Feet from the 2450	East/West line EAST	County LEA
---------------------------	----------------------	-------------------------	----------------------	---------	-----------------------------	----------------------------------	------------------------------	-------------------------------	----------------------

Bottom Hole Location If Different From Surface

UL or lot No. B	Section 13	Township 17-S	Range 37-E	Lot Idn	Feet from the 510	North/South line NORTH	Feet from the 2250	East/West line EAST	County LEA
---------------------------	----------------------	-------------------------	----------------------	---------	-----------------------------	----------------------------------	------------------------------	-------------------------------	----------------------

Dedicated Acres 80	Joint or Infill	Consolidation Code	Order No.
------------------------------	-----------------	--------------------	-----------

NO ALLOWABLE WILL BE ASSIGNED TO THIS COMPLETION UNTIL ALL INTERESTS HAVE BEEN CONSOLIDATED
OR A NON-STANDARD UNIT HAS BEEN APPROVED BY THE DIVISION



OPERATOR CERTIFICATION

I hereby certify the the information
contained herein is true and complete to the
best of my knowledge and belief.

Signature
H.R. Willis
Printed Name
DRUG SUPER
Title
3/23/01
Date

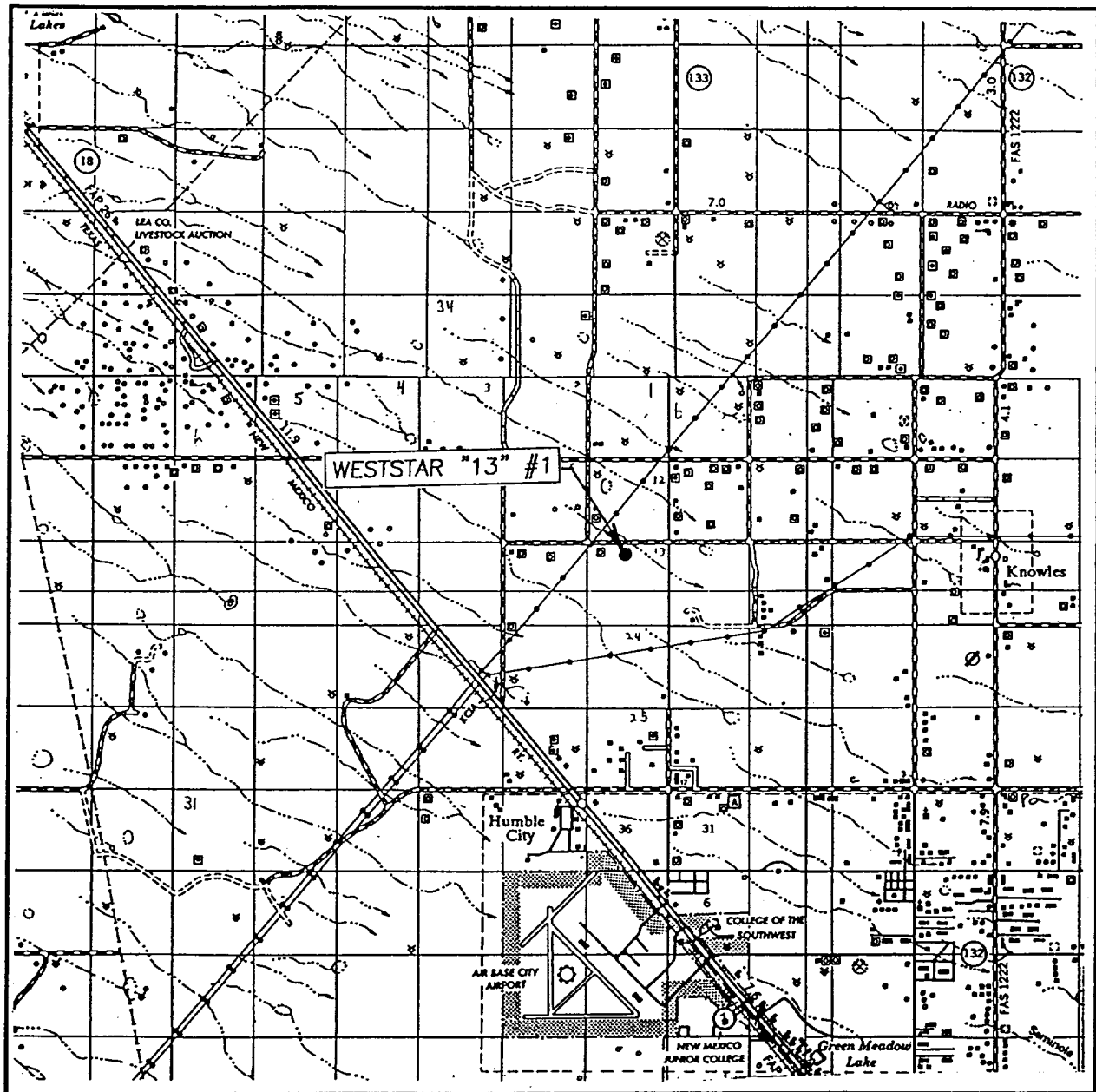
SURVEYOR CERTIFICATION

I hereby certify that the well location shown
on this plat was plotted from field notes of
actual surveys made by me or under my
supervision, and that the same is true and
correct to the best of my belief.

MARCH 22, 2001

Date Surveyed
Signature & Seal of
Professional Surveyor
RONALD G. EDSON
01-11-0395
Certified No. **RONALD G. EDSON 3239**
GARY EDSON 12841

VICINITY MAP



SCALE: 1" = 2 MILES

SEC. 13 TWP. 17-S RGE. 37-E

SURVEY N.M.P.M.

COUNTY LEA

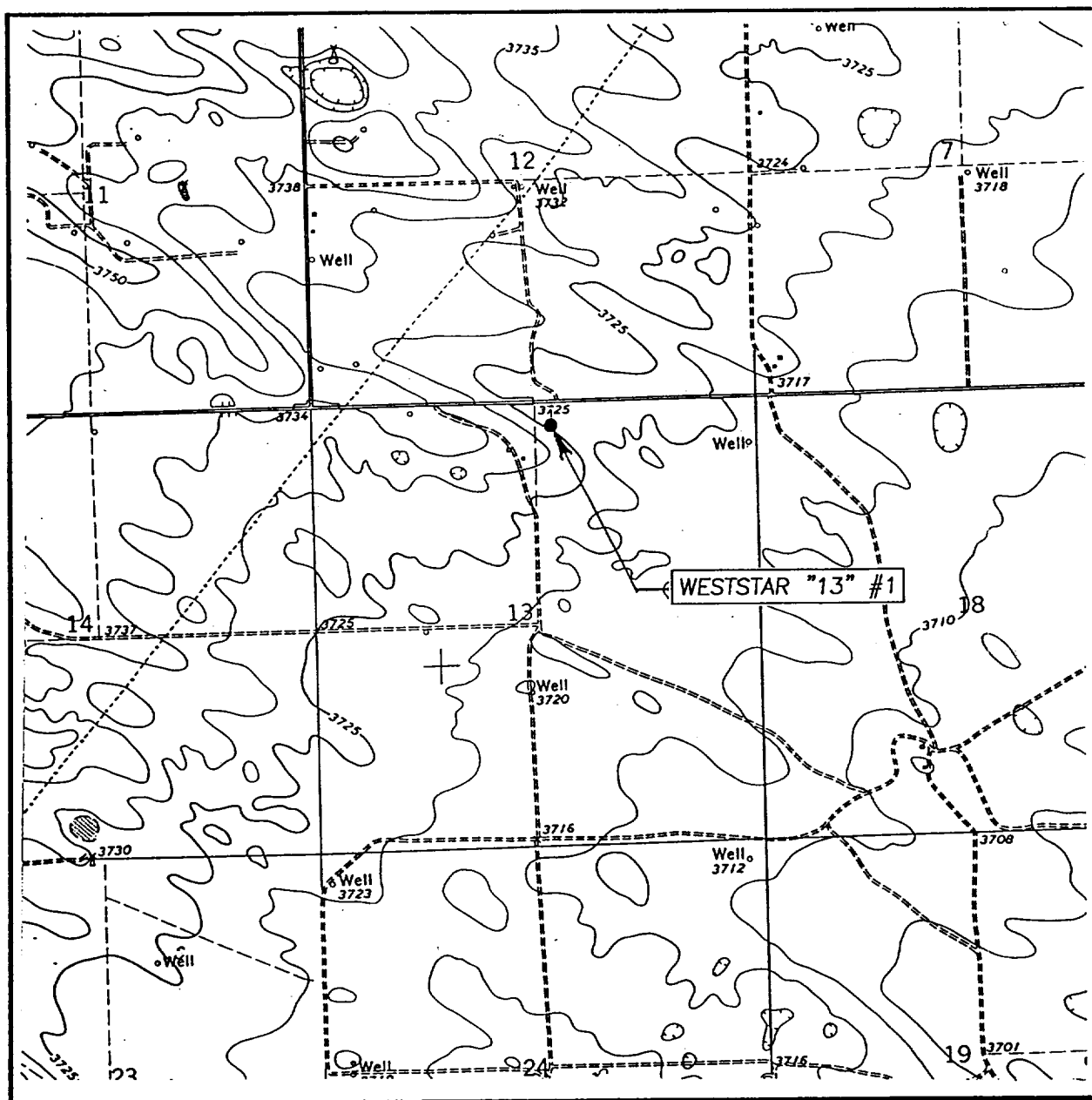
DESCRIPTION 280'FNL & 2450'FEL

ELEVATION 3723'

OPERATOR NEARBURG PRODUCING COMPANY

LEASE WESTSTAR #13

JOHN WEST SURVEYING
HOBBS, NEW MEXICO
(505) 393-3117



CONTOUR INTERVAL: 5'

HUMBLE CITY, N.M.

SEC. 13 TWP. 17-S RGE. 37-E

SURVEY N.M.P.M.

COUNTY _____ LEA _____

DESCRIPTION 280'FNL & 2450'FEL

ELEVATION 3723'

OPERATOR NEARBURG PRODUCING COMPANY

LEASE WESTSTAR #13

U.S.G.S. TOPOGRAPHIC MAP

HUMBLE CITY, N.M.

JOHN WEST SURVEYING
HOBBS, NEW MEXICO
(505) 393-3117