

MATADOR OPERATING COMPANY  
PIPELINE "A" FEDERAL 8 WELL #2  
660' FSL & 660' FEL  
Sec 8, T19S, R34E  
Lea County, New Mexico

EXHIBIT D  
BOP SCHEMATIC

(5M Rated Working Pressure)

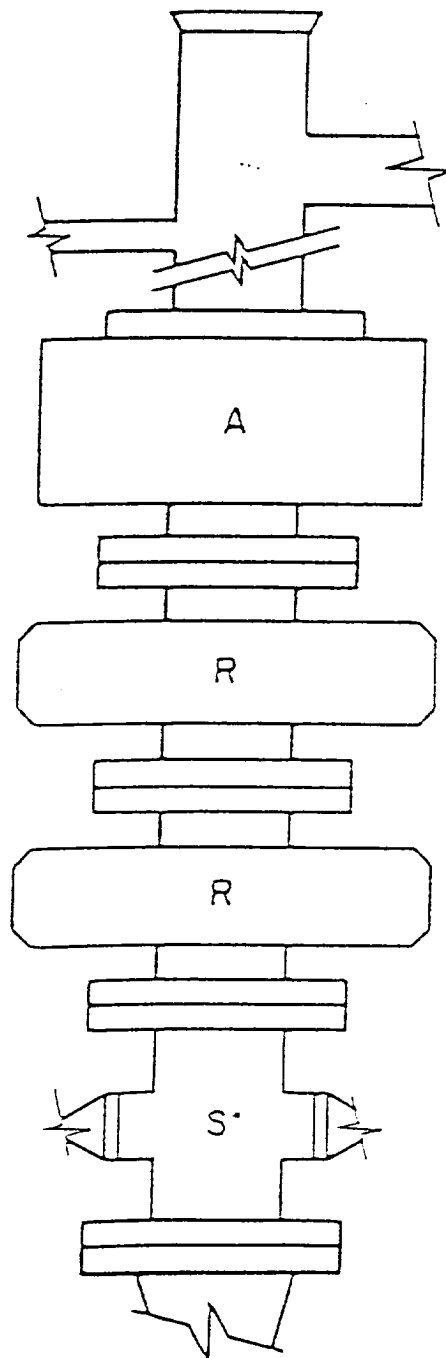


FIG. 2.C.5  
ARRANGEMENT S\*RA