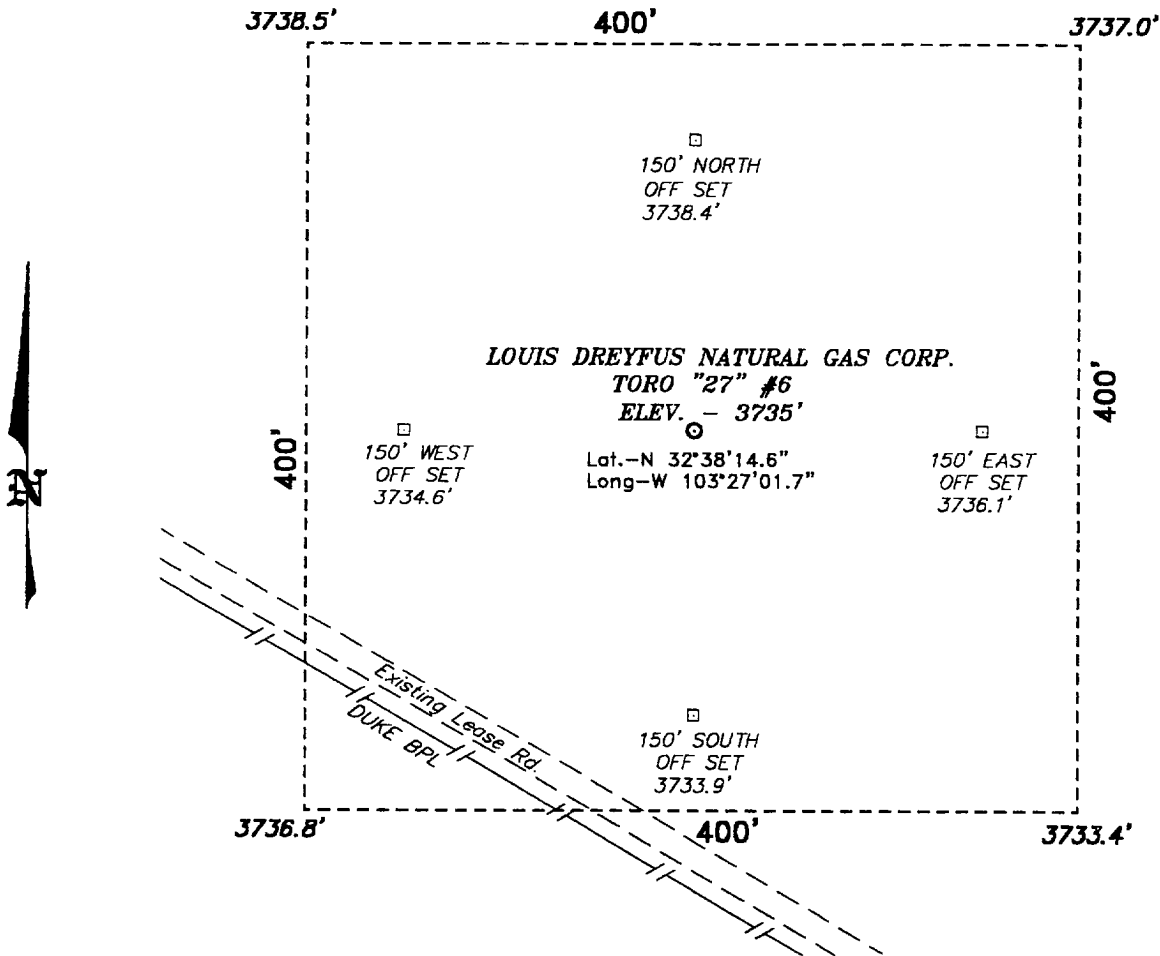


SECTION 27, TOWNSHIP 19 SOUTH, RANGE 35 EAST, N.M.P.M.,  
LEA COUNTY, NEW MEXICO.



A horizontal graphic scale bar with four segments. The first segment is labeled '100', the second '0', the third '100', and the fourth '200 FEET'. The bar is divided into smaller sub-segments, likely representing 20-foot increments.

SCALE: 1" = 100'

Directions to Location:

FROM THE JUNCTION OF STATE HWY 529 & US HWY 62/180, GO SOUTHWESTERLY ON 62/180 APPROX. 4.5 MILES TO A LEASE ROAD; THENCE SOUTHEAST ON LEASE ROAD APPROX. 2 MILES; THENCE NORTH ON LEASE ROAD APPROX. 700 FEET TO A POINT ON THE PROPOSED WELL PAD.

***Louis Dreyfus Natural Gas Corp.***

REF: Toro "27" #6 / Well Pad Topo

THE TORO "27" No. 6 LOCATED 490' FROM  
THE NORTH' LINE AND 990' FROM THE WEST LINE OF  
SECTION 27, TOWNSHIP 19 SOUTH, RANGE 35 EAST,  
N.M.P.M., LEA COUNTY, NEW MEXICO.

**BASIN SURVEYS** P.O. BOX 1786—HOBBS, NEW MEXICO

W.O. Number: 0496

Drawn By: **K. GOAD**

Date: 10-17-2000	Disk: KJG #122 -- 0496A.DWG
------------------	-----------------------------

Survey Date: 10-12-2000 Sheet 1 of 1 Sheets