

## District I

1625 N. French Dr., Hobbs, NM 88240

## District II

811 South First, Artesia, NM 88210

## District III

1000 Rio Brazos Rd., Aztec, NM 87410

## District IV

2040 South Pacheco, Santa Fe, NM 87505

State of New Mexico  
Energy, Minerals & Natural ResourcesOIL CONSERVATION DIVISION  
2040 South Pacheco  
Santa Fe, NM 87505Submit to Appropriate District Office  
State Lease - 6 Copies  
Fee Lease - 5 Copies

Form C-101

Revised March 12, 1999

☐ AMENDED REPORT

## APPLICATION FOR PERMIT TO DRILL, RE-ENTER, DEEPEN, PLUGBACK OR ADD A ZONE

<sup>1</sup> Operator Name and Address Dominion Oklahoma Texas Exploration & Production, Inc. 14000 Quail Springs Parkway - Suite 600 Oklahoma City, OK 73134		<sup>2</sup> OGRID Number <b>25773</b> <del>131454</del> <sup>3</sup> API Number <b>30-025-35848</b>
<sup>4</sup> Property Code <b>29490</b> <del>29490</del> <b>29519</b>	<sup>5</sup> Property Name Lee 20 State Com	<sup>6</sup> Well No. 1

<sup>7</sup> Surface Location

UL or lot no.	Section	Township	Range	Lot Idn	Feet from the	North/South line	Feet from the	East/West line	County
B	20	17S	35E		990	North	1980	East	Lea

<sup>8</sup> Proposed Bottom Hole Location If Different From Surface

UL or lot no.	Section	Township	Range	Lot Idn	Feet from the	North/South line	Feet from the	East/West line	County

<sup>9</sup> Proposed Pool 1Vacuum North Atoka Morrow, *North*<sup>10</sup> Proposed Pool 2

<sup>11</sup> Work Type Code N	<sup>12</sup> Well Type Code G	<sup>13</sup> Cable/Rotary Rotary	<sup>14</sup> Lease Type Code S	<sup>15</sup> Ground Level Elevation 3968'
<sup>16</sup> Multiple N	<sup>17</sup> Proposed Depth 12,700	<sup>18</sup> Formation Morrow	<sup>19</sup> Contractor Patterson	<sup>20</sup> Spud Date 2/28/02

<sup>21</sup> Proposed Casing and Cement Program

Hole Size	Casing Size	Casing weight/foot	Setting Depth	Sacks of Cement	Estimated TOC
17 1/2"	13 3/8"	48#	400'	450 sks	Surface
12 1/4"	8 5/8"	32#	5,100'	1500 sks	Surface
7 7/8"	5 1/2"	17#	12,700	800 sks	8,000'

<sup>22</sup> Describe the proposed program. If this application is to DEEPEN or PLUG BACK give the data on the present productive zone and proposed new productive zone. Describe the blowout prevention program, if any. Use additional sheets if necessary.

1. Drill 17 1/2" hole to  $\pm$  400'. Run 13 3/8" csg. and cement to surface w/450 sks cement.
2. Drill 12 1/4" hole to  $\pm$  5,100'. Run 8 5/8" csg. and cement to surface w/1500 sks cement.
3. Drill 7 7/8 " hole to  $\pm$  12,700'. Run 5 1/2" csg. and cement to 8,000' w/800 sks cement.

See attached "Exhibit 6" for BOP assembly.

Permit Expires 1 Year From Approval Date Unless Drilling Underway

<sup>23</sup> I hereby certify that the information given above is true and complete to the best of my knowledge and belief.

Signature:

*Carla Christian*

Printed name:

Carla Christian

Title:

Regulatory Technician

Date:

2/26/02

Phone:

405-749-5263

## OIL CONSERVATION DIVISION

Approved by:

Title:

Approval Date:

FEB 27 2002

Condition of Approval:

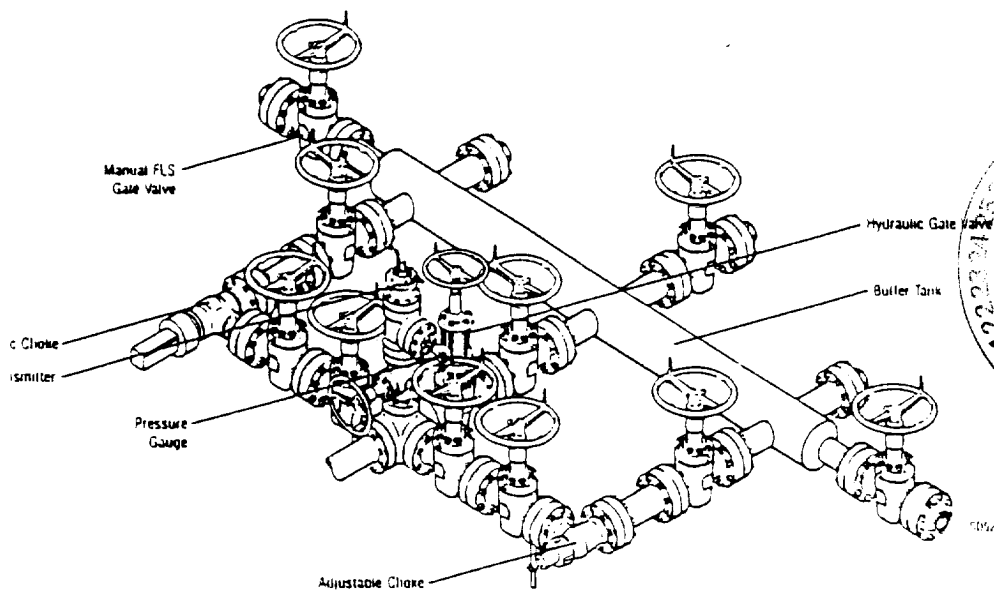
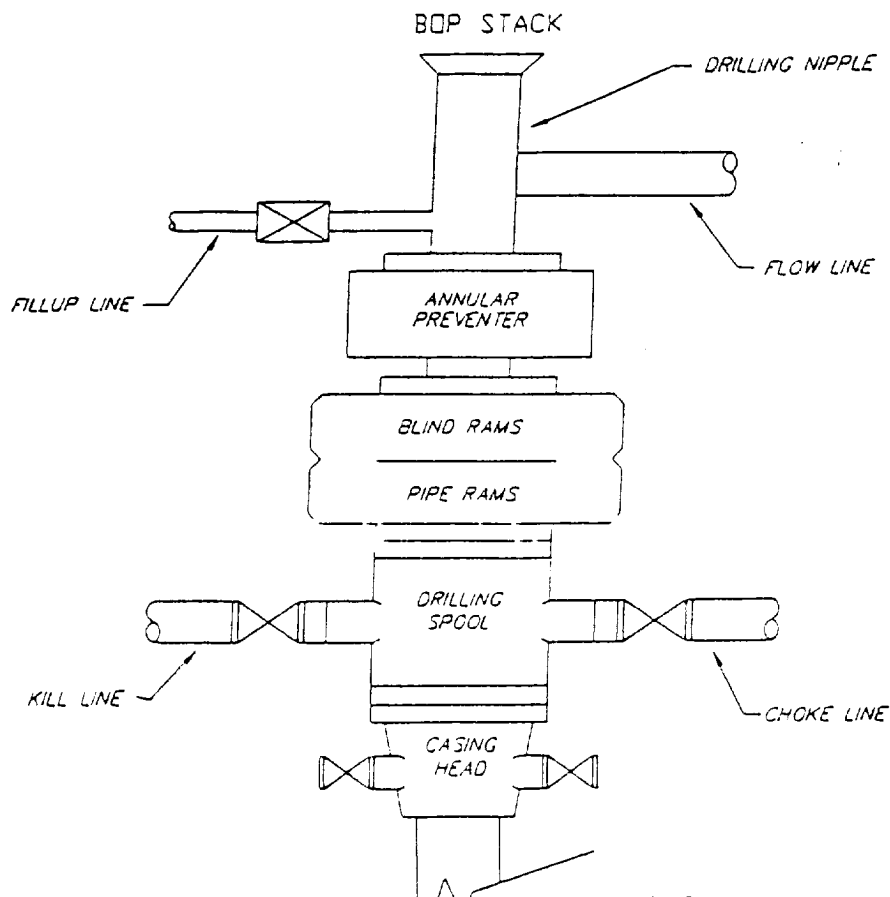
Attached ☐
 ORIGINAL SIGNED BY  
 PAUL F. KAUTZ  
 PETROLEUM ENGINEER

*Handwritten signature*

 J  
C  
A

# Exhibit 6

## TYPICAL 5,000 p.s.i. BLOWOUT PREVENTER & CHOKE MANIFOLD SCHEMATIC



Typical Choke Manifold Designed for Land Drilling Applications

DISTRICT I  
1825 N. French Dr., Hobbs, NM 88240

DISTRICT II  
811 South First, Artesia, NM 88210

DISTRICT III  
1000 Rio Brazos Rd., Aztec, NM 87410

DISTRICT IV  
2040 South Pacheco, Santa Fe, NM 87505

State of New Mexico  
Energy, Minerals and Natural Resources Department

Form C-102  
Revised March 17, 1999

Submit to Appropriate District Office  
State Lease - 4 Copies  
Fee Lease - 3 Copies

OIL CONSERVATION DIVISION

2040 South Pacheco  
Santa Fe, New Mexico 87504-2088

☐ AMENDED REPORT

WELL LOCATION AND ACREAGE DEDICATION PLAT

API Number <u>30-025-35848</u>	Pool Code <u>86800</u>	Pool Name <u>Vacuum North Atoka-Morrow North</u>
Property Code <u>29490</u> <u>29490-29517</u>	Property Name <u>LEE "20" STATE COM</u>	Well Number <u>1</u>
OGRID No. <u>131454</u> <u>25773</u>	Operator Name <u>DOMINION OKLAHOMA TEXAS E&amp;P INC.</u>	Elevation <u>3975'</u>

Surface Location

UL or lot No.	Section	Township	Range	Lot Idn	Feet from the	North/South line	Feet from the	East/West line	County
<u>B</u>	<u>20</u>	<u>17 S</u>	<u>35 E</u>		<u>990</u>	<u>NORTH</u>	<u>1980</u>	<u>EAST</u>	<u>LEA</u>

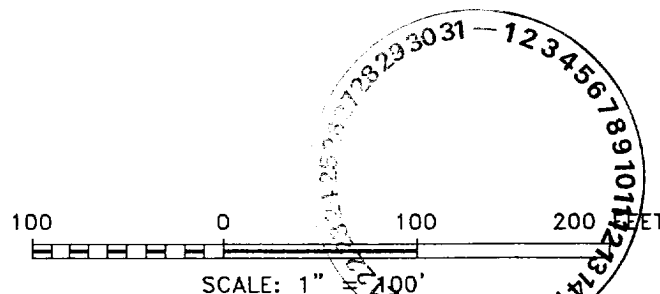
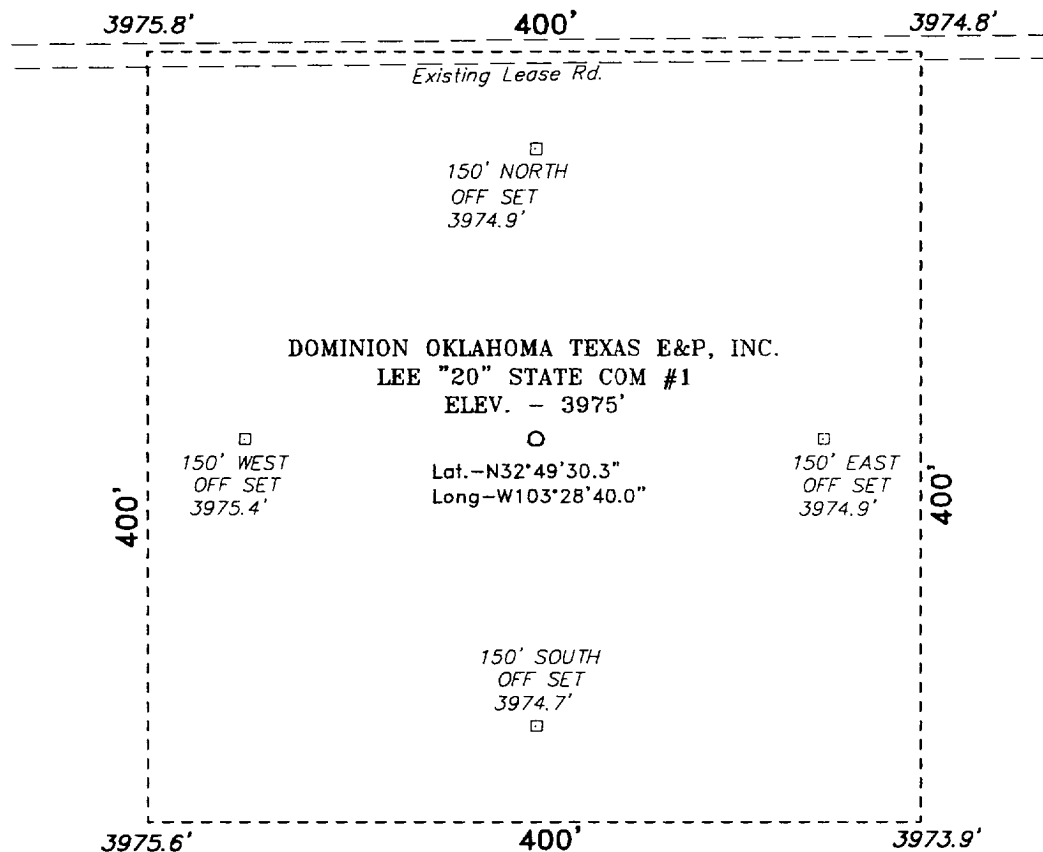
Bottom Hole Location If Different From Surface

UL or lot No.	Section	Township	Range	Lot Idn	Feet from the	North/South line	Feet from the	East/West line	County
Dedicated Acres <u>320</u>	Joint or Infill <u>N</u>	Consolidation Code	Order No.						

NO ALLOWABLE WILL BE ASSIGNED TO THIS COMPLETION UNTIL ALL INTERESTS HAVE BEEN CONSOLIDATED  
OR A NON-STANDARD UNIT HAS BEEN APPROVED BY THE DIVISION

		<p>State B-1334</p> <p>State E-7259</p> <p>990'</p> <p>3975.8'</p> <p>3974.8'</p> <p>1980'</p> <p>3975.6'</p> <p>3973.0'</p> <p>Lat.: N32°49'30.3"</p> <p>Long.: W103°28'40.0"</p> <p>State K-4549</p> <p>State B-2388</p>	<p>OPERATOR CERTIFICATION</p> <p>I hereby certify the the information contained herein is true and complete to the best of my knowledge and belief.</p> <p><u>Carla Christian</u></p> <p>Signature</p> <p><u>Carla Christian</u></p> <p>Printed Name</p> <p><u>Regulatory Technician</u></p> <p>Title</p> <p><u>February 2, 2003</u></p> <p>Date</p> <p>SURVEYOR CERTIFICATION</p> <p>I hereby certify that the well location shown on this plat was plotted from field notes actual surveys made by me or under supervision and that the same is true and correct to the best of my belief.</p> <p><u>FEBRUARY 01, 2003</u></p> <p>Date Surveyed</p> <p><u>GARY JONES</u></p> <p>Signature &amp; Seal of Professional Surveyor</p> <p><u>7977</u></p> <p>W.D. No.</p> <p>Certificate No. <u>Gary Jones 7977</u></p> <p>PROFESSIONAL LAND SURVEYOR</p> <p>BASIN SURVEYS</p>
--	--	--	---

SECTION 20, TOWNSHIP 17 SOUTH, RANGE 35 EAST, N.M.P.M.,  
LEA COUNTY, NEW MEXICO.



Directions to Location:

FROM LOVINGTON, GO WEST ON US HWY 82 FOR 6.0 MILES TO STATE HWY 238; THENCE SOUTH ON HWY 238 FOR APPROX. 8.0 MILES TO CO. RD. L125; THENCE CONTINUE SOUTH ON HWY 238 FOR 0.15 MILES TO A LEASE ROAD; THENCE EAST ON LEASE ROAD FOR APPROX. 2.0 MILES TO A POINT ON THE NORTH EDGE OF THE PROPOSED WELL PAD.

**Basin Surveys** P.O. BOX 1786-HOBBS, NEW MEXICO

W.O. Number: 2279 Drawn By: K. GOAD

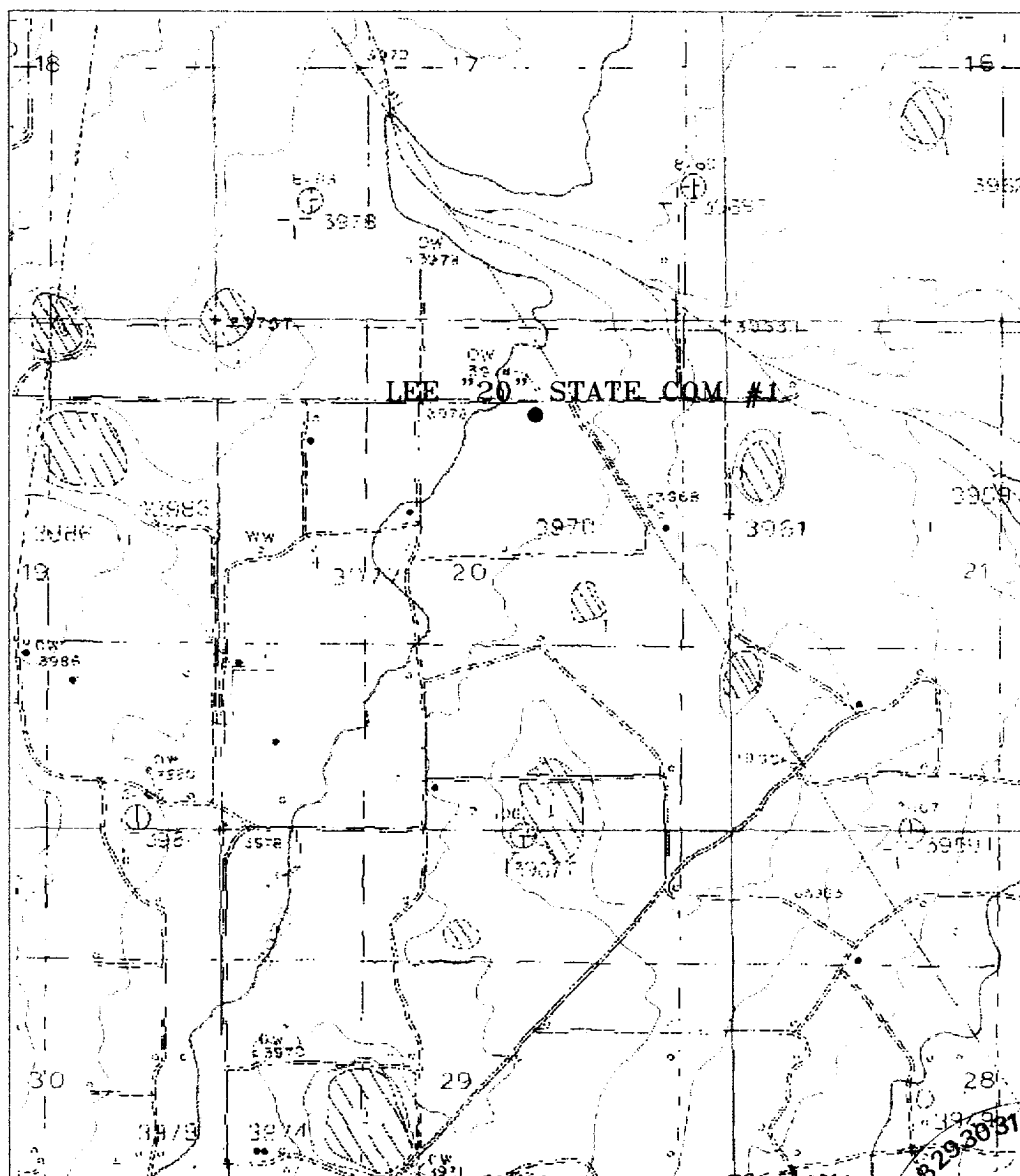
Date: 02-15-2002 Disk: KJG CD#4 - 2279A.DWG

**DOMINION OKLAHOMA TEXAS E&P, INC.**

REF: LEE "20" STATE COM #1 / Well Pad Topo

THE LEE "20" STATE COM No. 1 LOCATED 990' FROM THE NORTH AND 1980' FROM THE EAST LINE OF SECTION 20, TOWNSHIP 17 SOUTH, RANGE 35 EAST, N.M.P.M., LEA COUNTY, NEW MEXICO.

Survey Date: 02-14-2002 Sheet 1 of 1 Sheets



# LEE "20" STATE COM #1

Located at 990' FNL and 1980' FEL

Section 20, Township 17 South, Range 35 East

N.M.P.M., Lea County, New Mexico.

**basin**  
**surveys**

focused on excellence  
in the oilfield

P.O. Box 1786  
1120 N. West County Rd.  
Hobbs, New Mexico 88241  
(505) 393-7316 - Office  
(505) 392-3074 - Fax  
basinsurveys.com


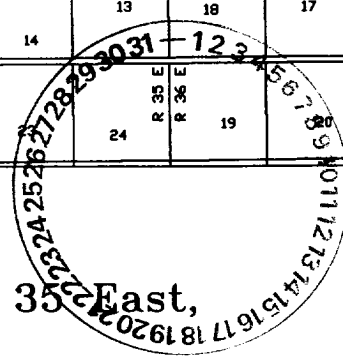
W.O. Number: 2279AA - KJC CD#5

Survey Date: 02-14-2002

Scale: 1" = 2000'

Date: 02-15-2002

**DOMINION**  
**OKLAHOMA TEXAS**  
**E&P, INC.**



**Basis**  
**surveys**  
focused on excellence  
in the oilfield

Date: 02-15-2002

DOMINION  
OKLAHOMA TEXAS  
E&P, INC.

ELF 7/26/62  
ABOVE DATE DOES NOT  
INDICATE WHEN  
CONFIDENTIAL LOGS  
WILL BE RELEASED