

DISTRICT I
P.O. Box 1980, Hobbs, NM 88241-1980

DISTRICT II
P.O. Drawer DD, Artesia, NM 88211-0719

DISTRICT III
1000 Rio Brazos Rd., Aztec, NM 87410

DISTRICT IV
P.O. BOX 2088, SANTA FE, N.M. 87504-2088

State of New Mexico
Energy, Minerals and Natural Resources Department

OIL CONSERVATION DIVISION
P.O. Box 2088
Santa Fe, New Mexico 87504-2088

Form C-102
Revised February 10, 1994
Submit to Appropriate District Office
State Lease - 4 Copies
Fee Lease - 3 Copies

WELL LOCATION AND ACREAGE DEDICATION PLAT

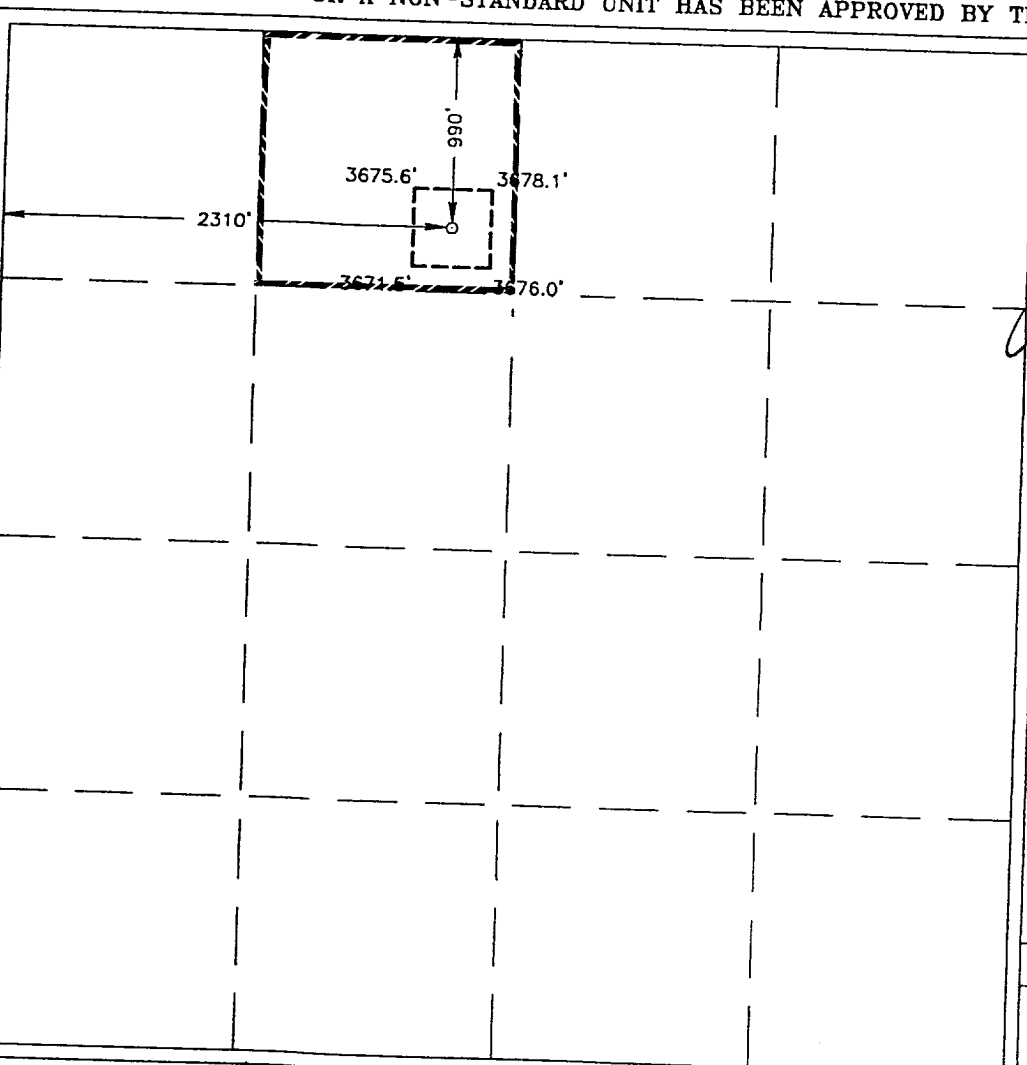
☐ AMENDED REPORT

| | | | |
|----------------------------------|---|--------------------|---------------------------------|
| API Number 30025-35943 | | Pool Code 59470 | Pool Name TONTO-SEVEN RIVERS |
| Property Code 29887 | Property Name GANTRYPERSON | | Well Number 1 |
| GRID No. 193407 | Operator Name CONCHO OIL & GAS CORPORATION | | Elevation 3676' |

| Surface Location | | | | | | | | | |
|------------------|---------|----------|-------|---------|---------------|------------------|---------------|----------------|--------|
| UL or lot No. | Section | Township | Range | Lot Idn | Feet from the | North/South line | Feet from the | East/West line | County |
| C | 15 | 19-S | 33-E | | 990 | NORTH | 2310 | WEST | LEA |

| Bottom Hole Location If Different From Surface | | | | | | | | | |
|--|-----------------|--------------------|-----------|---------|---------------|------------------|---------------|----------------|--------|
| UL or lot No. | Section | Township | Range | Lot Idn | Feet from the | North/South line | Feet from the | East/West line | County |
| | | | | | | | | | |
| Dedicated Acres 40 | Joint or Infill | Consolidation Code | Order No. | | | | | | |

NO ALLOWABLE WILL BE ASSIGNED TO THIS COMPLETION UNTIL ALL INTERESTS HAVE BEEN CONSOLIDATED
OR A NON-STANDARD UNIT HAS BEEN APPROVED BY THE DIVISION



OPERATOR CERTIFICATION

I hereby certify the the information
contained herein is true and complete to the
best of my knowledge and belief.

Signature

Joe T. Janica

Printed Name

Agent

Title

05/22/02

Date

SURVEYOR CERTIFICATION

I hereby certify that the well location shown
on this plat was plotted from field notes of
actual surveys made by me or under my
supervision, and that the same is true and
correct to the best of my belief.

MAY 14, 2002

Date Surveyed

AWB

Signature & Seal of
Professional Surveyor

RONALD L. EDSON
5/15/02
02.11.0357

Certificate No. RONALD L. EDSON 3239
GARY EDSON 12641

EXHIBIT "A"