

District I
1625 N. French Dr., Hobbs, NM 88240
District II
811 South First, Artesia, NM 88210
District III
1000 Rio Brazos Road, Aztec, NM 87410
District IV
2040 South Pacheco, Santa Fe, NM 87505

State of New Mexico
Energy Minerals and Natural Resources

Oil Conservation Division
2040 South Pacheco
Santa Fe, NM 87505

Form C-101
Revised March 17, 1999

Submit to appropriate District Office
State Lease - 6 Copies
Fee Lease - 5 Copies

☐ AMENDED REPORT

APPLICATION FOR PERMIT TO DRILL, RE-ENTER, DEEPEN, PLUGBACK, OR ADD A ZONE

¹ Operator Name and Address Ocean Energy, Inc. 1001 Fannin, Suite 1600, Houston, TX 77002		² OGRID Number 169355
³ Property Code 30047-30099		³ API Number 30-025-35948
⁴ Property Name Devil Dirt Dival "8" State Com		⁶ Well No. 1

⁷ Surface Location

UL or lot no.	Section	Township	Range	Lot Idn	Feet from the	North/South line	Feet from the	East/West line	County
O	8	17S	35E		660'	South	1980'	East	Lea

⁸ Proposed Bottom Hole Location If Different From Surface

UL or lot no.	Section	Township	Range	Lot Idn	Feet from the	North/South line	Feet from the	East/West line	County
⁹ Proposed Pool 1 Vacuum; Brunson Atoka - Morrow, North						¹⁰ Proposed Pool 2			

¹¹ Work Type Code N	¹² Well Type Code G	¹³ Cable/Rotary R	¹⁴ Lease Type Code S	¹⁵ Ground Level Elevation 3985'
¹⁶ Multiple N	¹⁷ Proposed Depth 12800'	¹⁸ Formation Brunson Atoka	¹⁹ Contractor Grey Wolf	²⁰ Spud Date When Approved

²¹ Proposed Casing and Cement Program

Hole Size	Casing Size	Casing weight/foot	Setting Depth	Sacks of Cement	Estimated TOC
17-1/2"	13-3/8"	48#	500'	575	Surf.
11"	8-5/8"	32#	5000'	1900	Surf.
7-7/8"	5-1/2"	17#	12800'	1000	7800'

22 Describe the proposed program. If this application is to DEEPEN or PLUG BACK, give the data on the present productive zone and proposed new productive zone. Describe the blowout prevention program, if any. Use additional sheets if necessary.

Ocean Energy, Inc. proposes to drill this well to 12800'. Log and run production casing as indicated above if log looks productive.

BOP Program: 11" 5000 psi type "U" ram. 11" 5000 psi annular preventor, 4" 5000 psi manifold. BOP's will be tested every two weeks. (See attached sketch of BOP's.

Permit Expires 1 Year From Approval
Date Unless Drilling Underway

23 I hereby certify that the information given above is true and complete to the best of my knowledge and belief.

Signature: Jeanie McMillan

Printed name: Jeanie McMillan

Title: Regulatory Specialist

Date: 7/11/2002

Phone: (713) 265-6834;

Fax (713) 265-8086

OIL CONSERVATION DIVISION

Approved by:

ORIGINAL SIGNED BY
PAUL F. KAUTZ

Title:

JUL 16 2002

PETROLEUM ENGINEER

Approval Date:

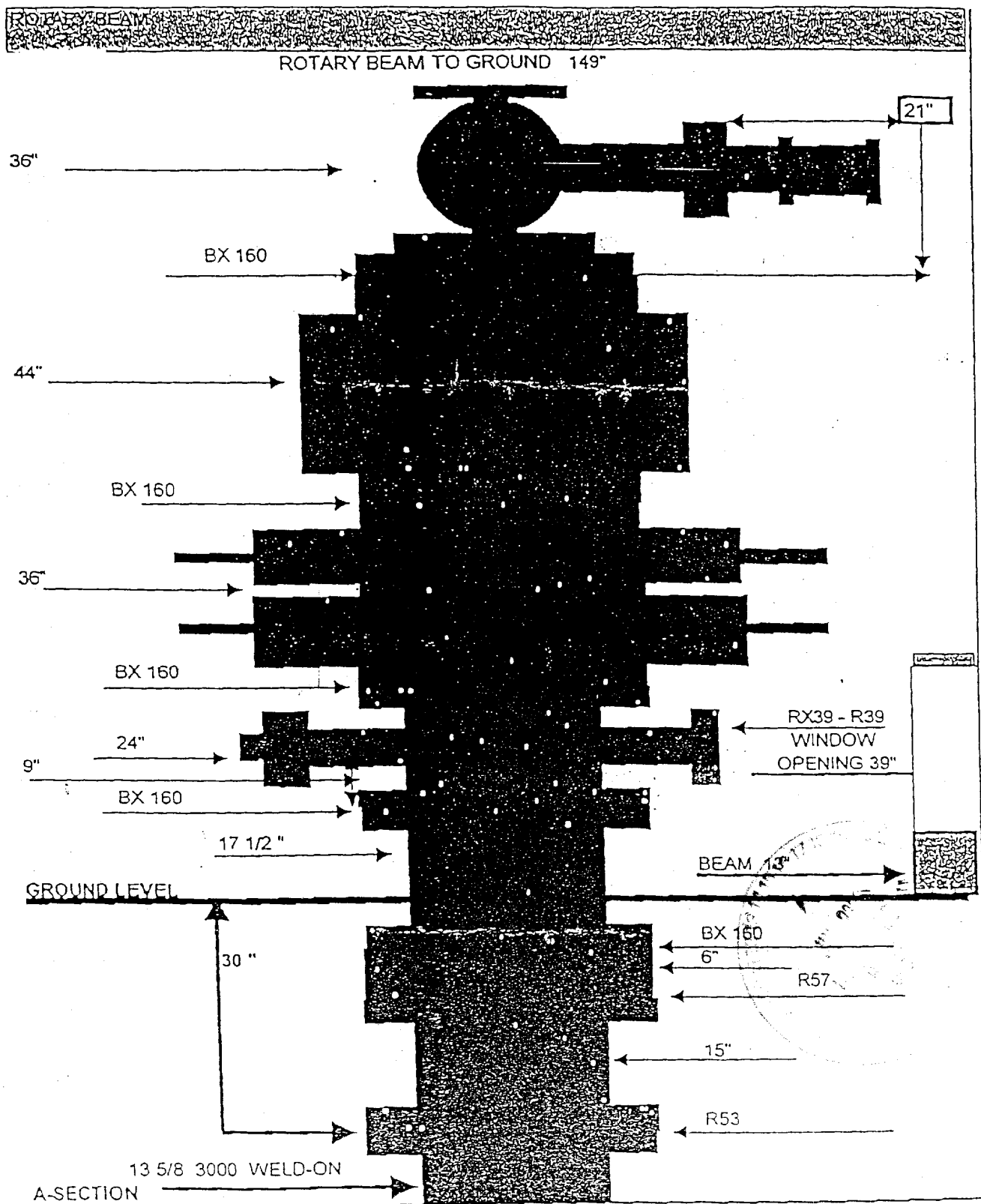
Expiration Date:

Conditions of Approval:

Attached ☐

meP

BOP

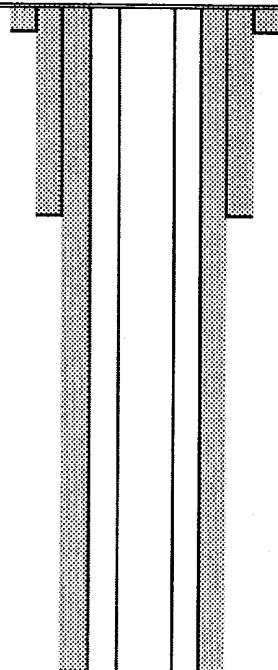
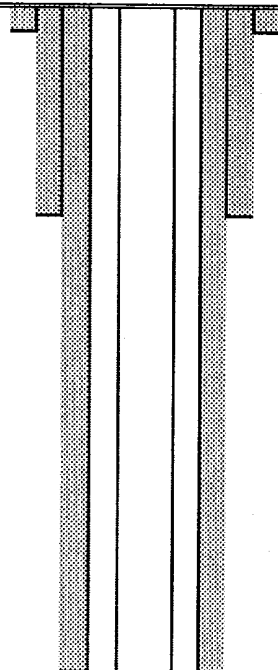


**OCEAN ENERGY
WELL SUMMARY**

LEASE: Dirt Devil "8" State
WELL: #1
AREA: Lea Co., NM
FIELD: Vacuum, North

SURF LOC: 660' FSL & 1980' FEL Sec 8, T17S, R35E
BHL: SAME

ENGR: Robert Elliott
RIG: Greywolf 33
ELEV. +/-4000' Est.
KB: +/-4025' Est.

DIRECTIONAL	OPEN HOLE LOGGING	SANDS/ MARKERS	DEPTH		CASING PROFILE	HOLE SIZE	CASING DETAILS	MUD WT. & TYPE	MAXIMUM DOGLEG SEVERITY
			TVD	MD					
STRAIGHT HOLE	E-LOGS NONE		40'	40'		PRESET	20" CONDUCTOR	GEL/LIME SPUD MUD	1"/100'
			500'	500'			13-3/8" 48# H-40, STC	8.6 PPG	
STRAIGHT HOLE	E-LOGS NONE	RUSTLER	1,900'	1,900'		11" HOLE	8-5/8, 32# K-55 HC, LTC	H ₂ S DETECTOR	2"/100'
		YATES	3,100'	3,100'				DRILL OUT W/ SPUD MUD TO TOP OF RUSTLER ADD BRINE AND CIRCULATE BRINE WATER RESERVE PIT pH = 10 LCM 32-34 VIS	
		SAN ANDRES	4,100'	4,100'					
			4,750	4,750					
STRAIGHT HOLE	MUD LOGGER ON @ 5000' 10' SAMPLES <								

RPE 13 JUN 02

DISTRICT I
1625 N. French Dr., Hobbs, NM 88240

DISTRICT II
811 South First, Artesia, NM 88210

DISTRICT III
1000 Rio Brazos Rd., Aztec, NM 87410

DISTRICT IV
2040 South Pacheco, Santa Fe, NM 87505

State of New Mexico
Energy, Minerals and Natural Resources Department

Form C-102
Revised March 17, 1999

Submit to Appropriate District Office
State Lease - 4 Copies
Fee Lease - 3 Copies

OIL CONSERVATION DIVISION

2040 South Pacheco
Santa Fe, New Mexico 87504-2088

☐ AMENDED REPORT

WELL LOCATION AND ACREAGE DEDICATION PLAT

API Number 30-025-35948	Pool Code 86800	Pool Name Vacuum Breaker ATOKA-Morrow, N.
Property Code 30047 30079	Property Name Devil DIRT DIVER "B" STATE COM	Well Number 1
OGRID No. 169355	Operator Name OCEAN ENERGY, INC.	Elevation 3985'

Surface Location

UL or lot No. 0	Section 8	Township 17 S	Range 35 E	Lot Idn	Feet from the 660'	North/South line SOUTH	Feet from the 1980'	East/West line EAST	County LEA
---------------------------	---------------------	-------------------------	----------------------	---------	------------------------------	----------------------------------	-------------------------------	-------------------------------	----------------------

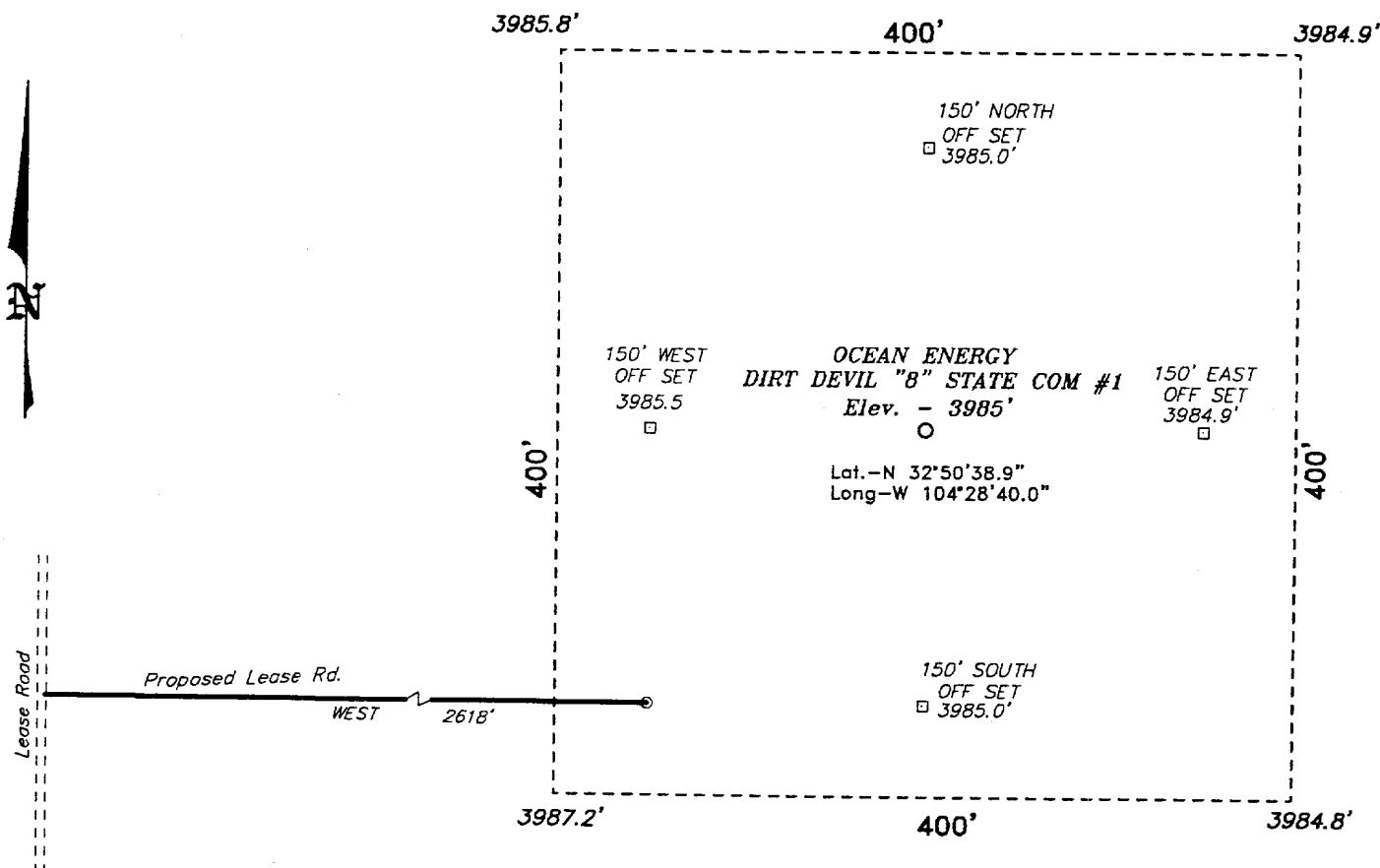
Bottom Hole Location If Different From Surface

UL or lot No.	Section	Township	Range	Lot Idn	Feet from the	North/South line	Feet from the	East/West line	County
Dedicated Acres 320	Joint or Infill	Consolidation Code	Order No.						

NO ALLOWABLE WILL BE ASSIGNED TO THIS COMPLETION UNTIL ALL INTERESTS HAVE BEEN CONSOLIDATED
OR A NON-STANDARD UNIT HAS BEEN APPROVED BY THE DIVISION

	OPERATOR CERTIFICATION I hereby certify the the information contained herein is true and complete to the best of my knowledge and belief. <i>Jeanie McMillan</i> Signature JEANIE Mc MILLAN Printed Name Sr. Regulatory Specialist Title 7-11-02 Date
	SURVEYOR CERTIFICATION I hereby certify that the well location shown on this plat was plotted from field notes of actual surveys made by me or under my supervision, and that the same is true and correct to the best of my belief. JUNE 26, 2002 Date Surveyed <i>GARY L. JONES</i> Signature & Seal of Professional Surveyor 7977 W.O. No. 2579 Certificate No. Gary L. Jones 7977 JLP BASIN SURVEYS

SECTION 8, TOWNSHIP 17 SOUTH, RANGE 35 EAST, N.M.P.M.,
LEA COUNTY, NEW MEXICO.



Directions to Location:

FROM THE JCT. OF US HWY. 82 & STATE HWY. 238
GO SOUTH ON 238 FOR 7.4 MILES TO A LEASE
ROAD LEFT, GO EAST ON LEASE RD. 0.6 MILES TO A
"Y" TAKE LEFT FORK NORTH 0.1 MILES & EAST 0.8
MILES TO A LEASE ROAD RT. GO SOUTH ON LEASE
ROAD 0.9 MILES TO PROPOSED LEASE ROAD LEFT.



SCALE: 1" = 100'

BASIN SURVEYS P.O. BOX 1786 - HOBBS, NEW MEXICO

W.O. Number: 2579

Drawn By: J. PRESLEY

Date: 06/27/02

Disk: JLP #1 - OCE2579A

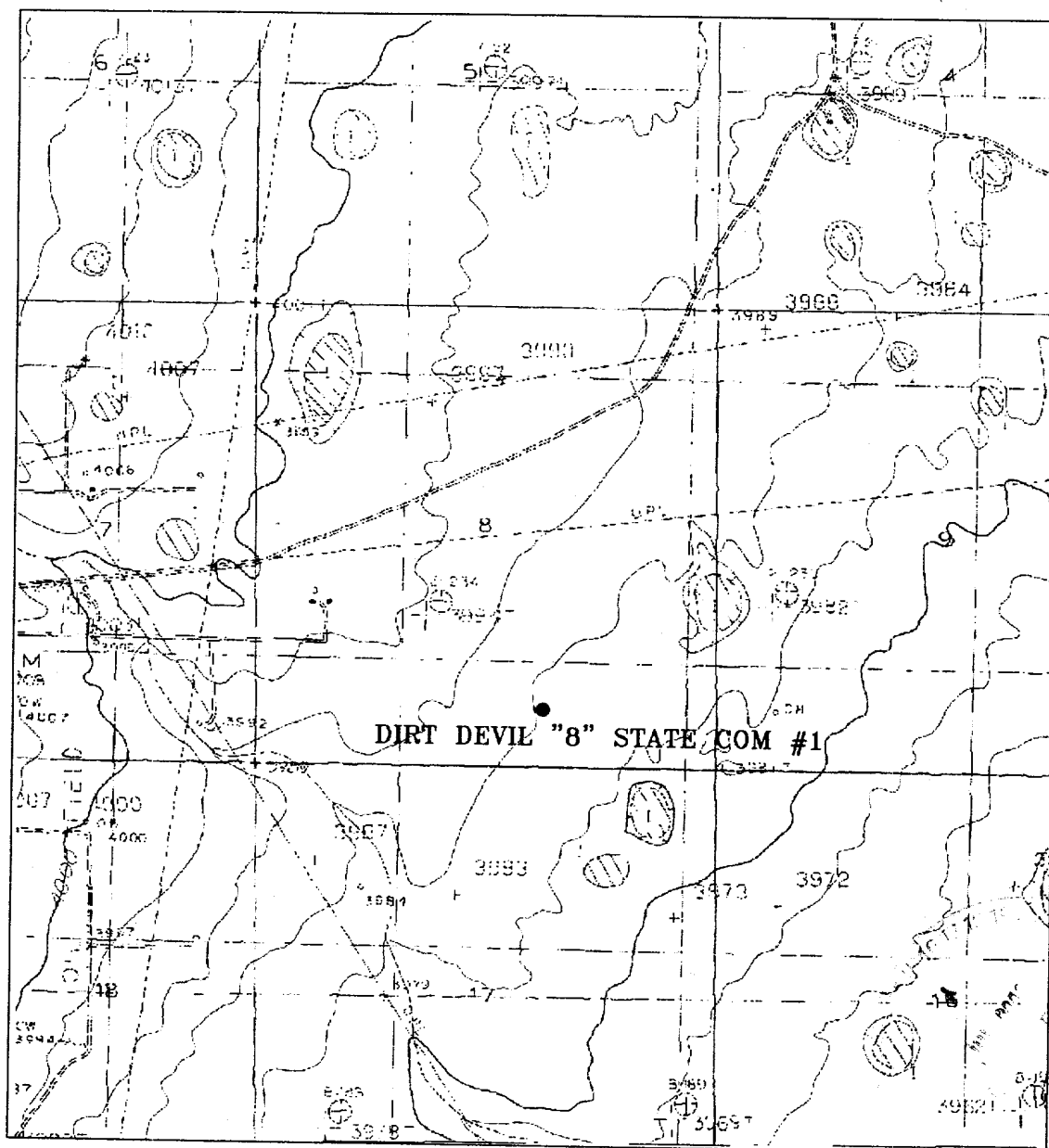
Survey Date: 06/26/02

Sheet 1 of 1 Sheets

OCEAN ENERGY

REF: DIRT DEVIL "8" STATE COM #1 / Well Pad Topo

THE DIRT DEVIL "8" STATE COM #1 LOCATED 660' FROM
THE SOUTH LINE AND 1980' FROM THE EAST LINE OF
SECTION 8, TOWNSHIP 17 SOUTH, RANGE 35 EAST,
N.M.P.M., LEA COUNTY, NEW MEXICO.



DIRT DEVIL "8" STATE COM #1
 Located at 660' FSL and 1980' FEL
 Section 8, Township 17 South, Range 35 East,
 N.M.P.M., Lea County, New Mexico.

basin
surveys
 focused on excellence
 in the oilfield

P.O. Box 1786
 1120 N. West County Rd.
 Hobbs, New Mexico 88241
 (505) 393-7316 - Office
 (505) 392-3074 - Fax
 basinsurveys.com

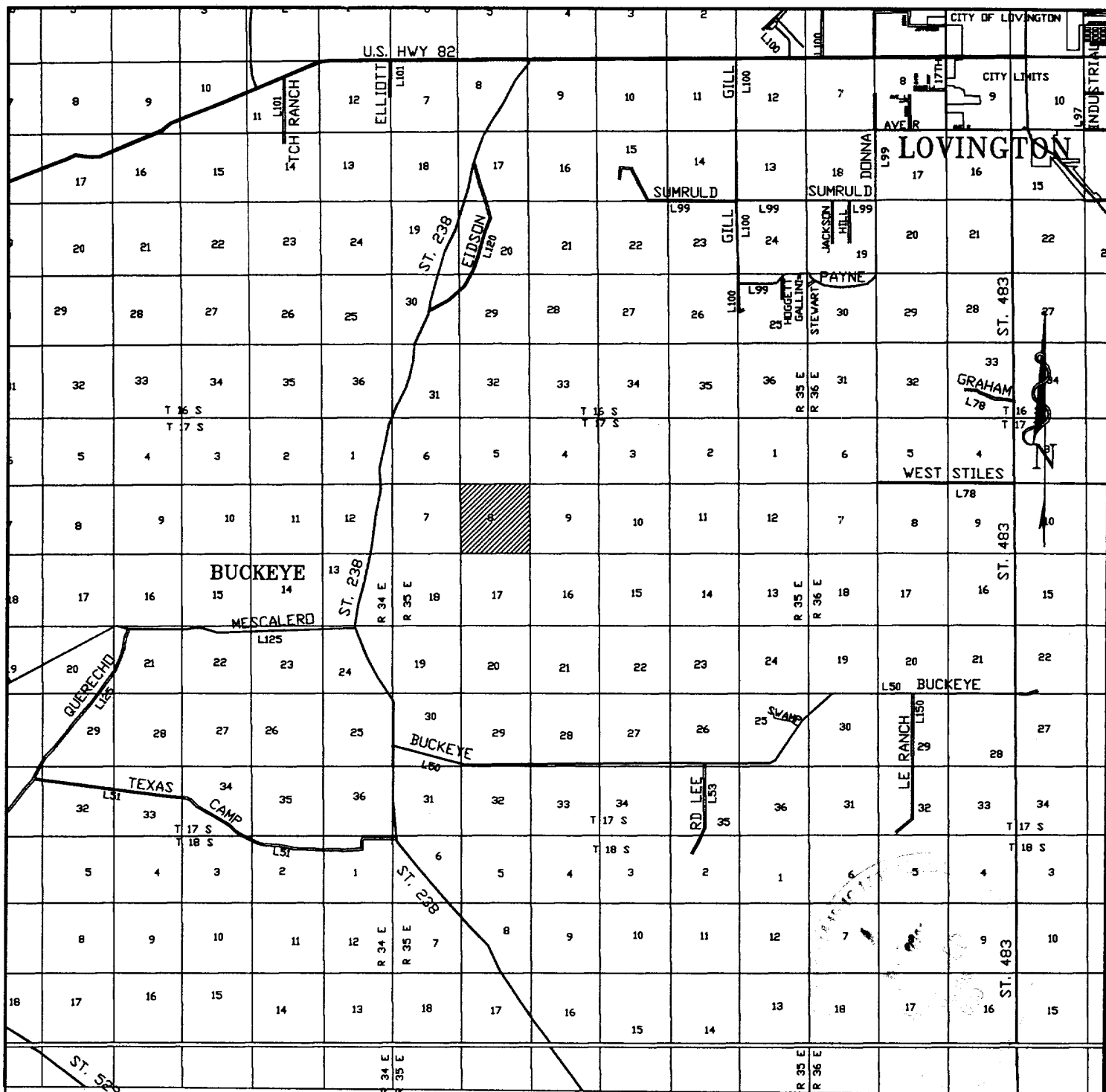
W.O. Number: 2579AA - JLP #1

Survey Date: 06/26/02

Scale: 1" = 2000'

Date: 06/27/02

OCEAN ENERGY



DIRT DEVIL "8" STATE COM #1
 Located at 660' FSL and 1980' FEL
 Section 8, Township 17 South, Range 35 East,
 N.M.P.M., Lea County, New Mexico.

basin
surveys
 focused on excellence
 in the oilfield

P.O. Box 1786
 1120 N. West County Rd.
 Hobbs, New Mexico 88241
 (505) 393-7316 - Office
 (505) 392-3074 - Fax
 basin-surveys.com

W.O. Number: 2579AA - JLP #1

Survey Date: 06/26/02

Scale: 1" = 2000'

Date: 06/27/02

OCEAN ENERGY