

District IV
1220 S. Francis Dr., Santa Fe, NM 87505

Oil Conservation Division
1220 S. St. Francis Dr.
Santa Fe, NM 87505

Submit to appropriate District Office
State Lease - 6 Copies
Fee Lease - 5 Copies

☐ AMENDED REPORT

Operator Name and Address

Fasken Oil and Ranch, Ltd. 303 West Wall, Suite 1800 Midland, TX 79701

² OGRID Number

151416

³ API Number

30-025-3609

⁶ Well No.

•

⁷ Surface Location

Surface Location									
UL or lot no.	Section	Township	Range	Lot Idn	Feet from the	North/South line	Feet from the	East/West line	County
E	26	17S	34E		1980	North	1310	West	Lea

8	Proposed Bottom Hole Location If Different From Surface	
---	---	--

Proposed Bottom Hole Location If Different From Surface									
UL or lot no.	Section	Township	Range	Lot Idn	Feet from the	North/South line	Feet from the	East/West line	County

⁹ Proposed Pool 1

North Vacuum Atoka Morrow

¹⁰ Proposed Pool 2

¹¹ Work Type Code N	¹² Well Type Code G	¹³ Cable/Rotary Rotary	¹⁴ Lease Type Code S	¹⁵ Ground Level Elevation 4032'
¹⁶ Multiple N	¹⁷ Proposed Depth 11,800'	¹⁸ Formation Morrow	¹⁹ Contractor Unknown	²⁰ Spud Date 1/15/03
²¹ Proposed Completion Date				

21 Proposed Casing and Cement Program

Hole Size	Casing Size	Casing weight/foot	Setting Depth	Sacks of Cement	Estimated TOC
17 1/2"	13 3/8"	48#	500'	550 sx C	surface
12 1/4"	9 5/8"	36/40#	5000'	1200 sx C	surface
8 3/4"	5 1/2"	17/20#	11,800'	1850 sx C/H	4500'

22 Describe the proposed program. If this application is to DEEPEN or PLUG BACK, give the data on the present productive zone and proposed new productive zone. Describe the blowout prevention program, if any. Use additional sheets if necessary.

Please see the attached for procedure, casing program and BOP schematic.

Permit Expires 1 Year From Approval
Date Unless Drilling Underway

²³ I hereby certify that the information given above is true and complete to the best of my knowledge and belief.

Signature: Jimmy D. Canile
Printed name: Jimmy D. Canile

Title: Regulatory Affairs Coordinator

Date: 12/20/02

Phone: (915) 687-1777

OIL CONSERVATION DIVISION

Approved by:

ORIGINAL SIGNED BY

Title:

~~PAUL F. KAUTZ~~

Approval Date:

~~PETROLEUM ENGINEER~~

Expiration Date:

Conditions of Approval: **JAN 03 2003**

Attached ☐

DISTRICT I

1625 N. French Dr., Hobbs, NM 88240

DISTRICT II

511 South First, Artesia, NM 88210

DISTRICT III

1000 Rio Brazos Rd., Aztec, NM 87410

DISTRICT IV

2040 South Pacheco, Santa Fe, NM 87505

State of New Mexico

Energy, Minerals and Natural Resources Department

Form C-102

Revised March 17, 1999

Submit to Appropriate District Office

State Lease - 4 Copies

Fee Lease - 3 Copies

OIL CONSERVATION DIVISION

2040 South Pacheco

Santa Fe, New Mexico 87504-2088

☐ AMENDED REPORT

WELL LOCATION AND ACREAGE DEDICATION PLAT

API Number 30-025-36093	Pool Code 86800	Pool Name North Vacuum Atoka Morrow
Property Code 31012	Property Name KIRBY "26" STATE	Well Number 1
OGRID No. 151416	Operator Name FASKEN OIL & RANCH, LTD.	Elevation 4032'

Surface Location

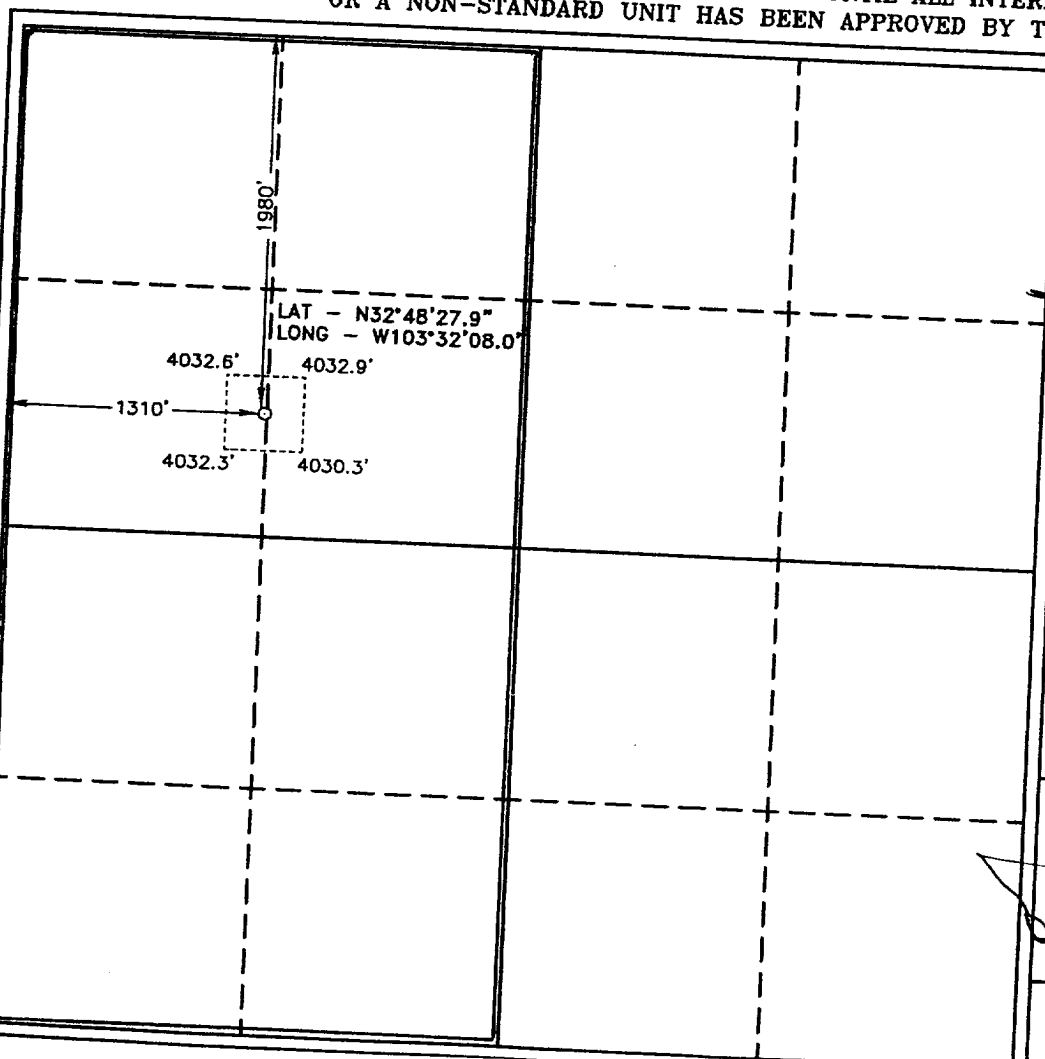
UL or lot No.	Section	Township	Range	Lot Idn	Feet from the	North/South line	Feet from the	East/West line	County
E	26	17 S	34 E		1980	NORTH	1310	WEST	LEA

Bottom Hole Location If Different From Surface

UL or lot No.	Section	Township	Range	Lot Idn	Feet from the	North/South line	Feet from the	East/West line	County

Dedicated Acres 320	Joint or Infill	Consolidation Code	Order No.
-------------------------------	-----------------	--------------------	-----------

NO ALLOWABLE WILL BE ASSIGNED TO THIS COMPLETION UNTIL ALL INTERESTS HAVE BEEN CONSOLIDATED
OR A NON-STANDARD UNIT HAS BEEN APPROVED BY THE DIVISION



OPERATOR CERTIFICATION

I hereby certify the the information
contained herein is true and complete to the
best of my knowledge and belief.

Jimmy D. Carlile
Signature

Jimmy D. Carlile
Printed Name

Regulatory Affairs Coord.
Title

December 20, 2002
Date

SURVEYOR CERTIFICATION

I hereby certify that the well location shown
on this plat was plotted from field notes of
actual surveys made by me or under my
supervision, and that the same is true and
correct to the best of my belief.

DECEMBER 06, 2002

Date Surveyed
Signature & Seal of
Professional Surveyor

W.D. No. 29024
Certificate No. Gary L. Jones 7977
BASIN SURVEYS

Recommended Procedure

Kirby "26" State No. 1 ————— A.F.E. No. 627 ————— North Vacuum Atoka-Morrow Field
1980' FNL and 1310' FWL
Sec. 26, T17S, R34E
Lea County, NM

1. Drilling contractor to set 30" conductor if necessary. MIRU rotary tools.
2. Drill 17-1/2" hole to 500' with spud mud. Set and cement 13-3/8" casing 550 sx Class "C" with 2% CaCl_2 (s.w. 14.8 ppg, yield 1.32 ft^3/sx). WOC 18 hrs.
3. Drill 12-1/4" hole to 5000' with 10 ppg brine water. Control seepage with paper.
4. Set and cement 9-5/8" casing at 5000' with estimated 1000 sx Halliburton Interfill "C" with 8# salt and 1/4# Flocele (s.w. 11.9 ppg, yield 2.46 ft^3/sx) plus 200 sx Class "C" neat (s.w. 14.8 ppg, 1.32 ft^3/sx). Run temperature survey and locate TOC if cement is not circulated.
5. Install 11" x 5000 psi intermediate spool. NU 11" 5000 psi B.O.P.'s, hydril and choke manifold. WOC 12 hours. Set up DST test line complete with test tank. RU mud gas separator with flare ignitor. Install H_2S monitor equipment, escape packs and briefing stations.
6. Hydrostatically test 200' of 9-5/8" casing to 2800 psig, casing spool, BOP's, and choke manifold to 3000 psig, and hydril to 1500 psig. Install PVT equipment
8. Drill 8-3/4" hole to total depth of 11,800'. Drill out using fresh water to a depth of 9100'. Convert to 9.0 ppg cut brine water at 9100' just above the Wolfcamp shales. Mud up by 10,800' with starch and PAC mud system. Increase viscosity with salt gel or polymer as needed to clean hole. Maintain 9.0-9.5 ppg and 10 cc water loss to total depth.
9. DST all shows.
10. Log well with DLL-MSFL and CNL-LDT using Schlumberger Platform Express.
11. Install 5-1/2" BOP rams, run and cement 5-1/2" production casing (resin coated and centralized through pay zones) with DV tool at base of Abo (estimate 9000') as follows;

First Stage: Note, batch mix lead slurry. 10 bfw + 500 gallons Mud Clean + 10 bfw and estimated 750 sx Halliburton Super "H" with 1# salt, 0.4% CFR-3, 0.5% Halad-344, 0.1% HR-7 and 5# Gilsonite (s.w. 13.0 ppg, yield 1.60 ft^3/sx). Open DV tool and circulate 6 hours.

Second stage: 1000 sx Halliburton Lite "C" with 6% gel (s.w. 12.6 ppg, yield 2.01 ft^3/sx) plus 100 sx Class "H" neat (s.w. 15.6 ppg, yield 1.18 ft^3/sx). Calculate second stage cement volume for TOC at 4500'.
12. Set slips, nipple down BOP's and run temperature survey to locate cement top.
13. Install 11"-5000 psi x 7-1/16"-5000 psi tubinghead and flow tree.
14. Rig down and move out rotary tools.
15. Level location, set mast anchors, move in and rig up completion unit.

Kirby "26" State No. 1 Recommended Procedure
Page 2

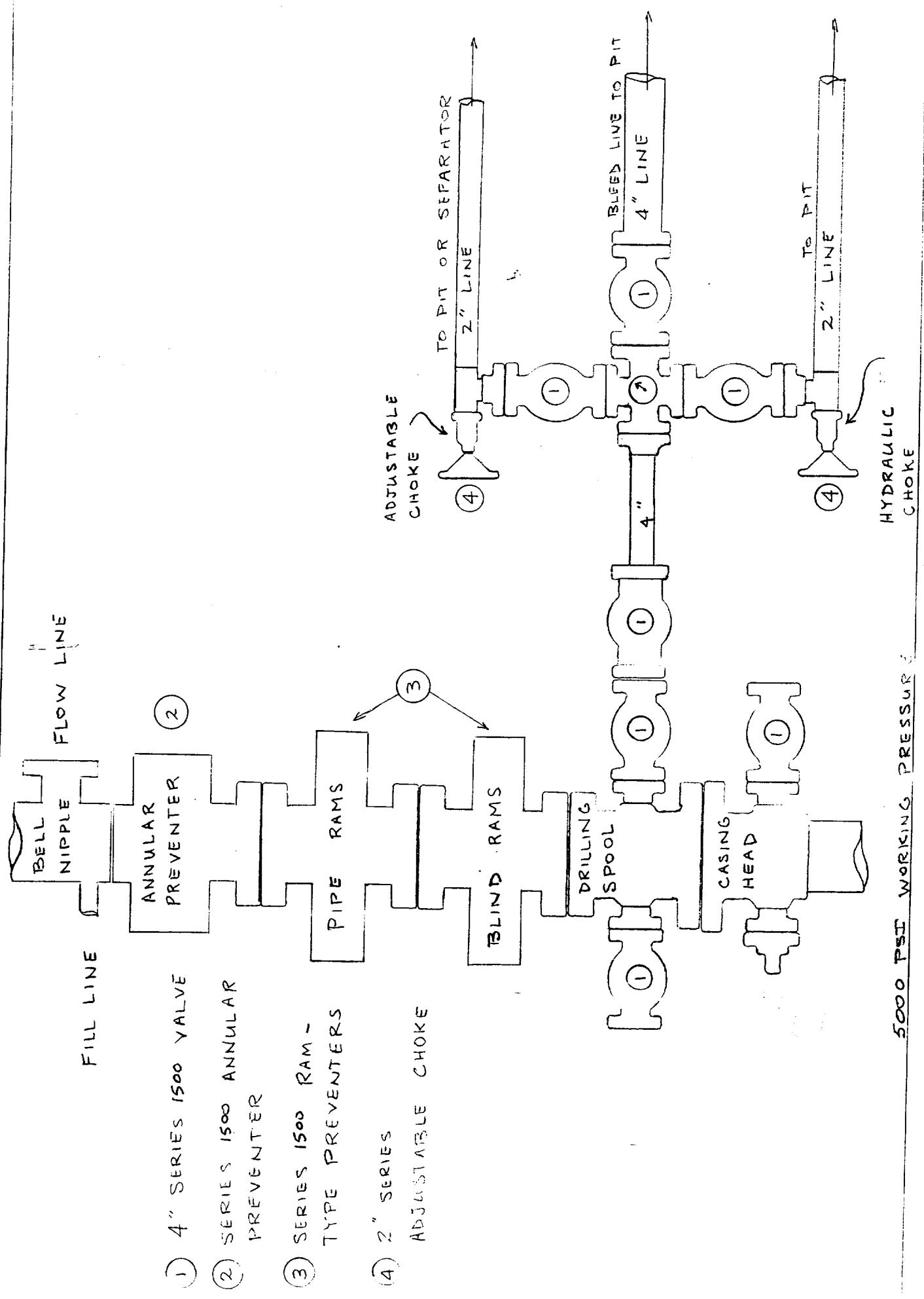
16. RIW with 4-5/8" bit, 5-1/2" casing scraper, 6 3-1/2" drill collars and 2-3/8" 4.7# N-80 EUE 8rd tubing. Drill out DV tool and reciprocate scraper through DV tool several times. Pressure test casing to 1500 psig. RIW and clean out to float collar. Circulate well clean and pressure test casing to 1500 psig. POW and LD tools.
17. RIW with packer, T.O.S.S.D. with "F" profile nipple and 2-3/8" tubing. Set packer, install flow tree, swab down tubing and perforate pay interval.
18. Flow test well , evaluate, and stimulate if necessary.
19. RDPU. Clean and level location.
20. Run C.A.O.F.P. and pressure build up.
21. Connect surface equipment.

TET
(Kirby26State1drlgprc)

Recommended Casing Program
A.F.E. No. 627

Fasken Oil and Ranch, Ltd. — Kirby "26" State No. 1 — North Vacuum Atoka-Morrow Field
Lea County, NM

String	Footage	Size	Weight	Grade	Thread
Surface	500'	13-3/8"	48.00#	H-40	ST&C
Intermediate	2700'	9-5/8"	36.00#	K-55	ST&C
	1500'	9-5/8"	40.00#	K-55	ST&C
	800'	9-5/8"	40.00#	HCK-55	ST&C
	5000'				
Production	800'	5-1/2"	17.00#	N-80	BT&C
	10,000'	5-1/2"	17.00#	N-80	LT&C
	1,000'	5-1/2"	20.00#	N-80	LT&C
	11,800'				
Tubing	11,700'	2-3/8"	4.70#	N-80	EUE 8rd



5000 PSI WORKING PRESSURE