

DISTRICT I  
P.O. Box 1980, Hobbs, NM 88240

DISTRICT II  
P.O. Drawer DD, Artesia, NM 88210

DISTRICT III  
1000 Rio Brisco Rd., Aztec, NM 87410

# OIL CONSERVATION DIVISION

P.O. Box 2088  
Santa Fe, New Mexico 87504-2088

WELL API NO.	30-025-04140
1. Indicate Type of Lease	STATE <input checked="" type="checkbox"/> FEE <input type="checkbox"/>
4. State Oil & Gas Lease No.	B-154-3
7. Lease Name or Unit Agreement Name	NORTH MONUMENT G/SA UNIT 19
8. Well No.	5
9. Pool name or Wildcat	EUNICE MONUMENT G/SA

SUNDRY NOTICES AND REPORTS ON WELLS  
(DO NOT USE THIS FORM FOR PROPOSALS TO DRILL OR TO DEEPEN OR PLUG BACK TO A  
DIFFERENT RESERVOIR. USE "APPLICATION FOR PERMIT"  
(FORM C-101) FOR SUCH PROPOSALS.)

1. Type of Well: OIL <input checked="" type="checkbox"/> GAS <input type="checkbox"/> OTHER <input type="checkbox"/>	2. Name of Operator AMERADA HESS CORPORATION
3. Address of Operator POST OFFICE DRAWER D, MONUMENT, NEW MEXICO 88265	4. Well Location Unit Letter <u>E</u> : <u>1980</u> Feet From The <u>NORTH</u> Line and <u>660</u> Feet From The <u>WEST</u> Line

Section <u>1</u>	Township <u>20S</u>	Range <u>36E</u>	NMPM	LEA	County
10. Elevation (Show whether DF, RKB, RT, GR, etc.)					

11. Check Appropriate Box to Indicate Nature of Notice, Report, or Other Data	
NOTICE OF INTENTION TO:	SUBSEQUENT REPORT OF:
PERFORM REMEDIAL WORK <input type="checkbox"/>	REMEDIAL WORK <input type="checkbox"/>
PLUG AND ABANDON <input type="checkbox"/>	ALTERING CASING <input type="checkbox"/>
TEMPORARILY ABANDON <input type="checkbox"/>	COMMENCE DRILLING OPNS. <input type="checkbox"/>
CHANGE PLANS <input type="checkbox"/>	PLUG AND ABANDONMENT <input type="checkbox"/>
PULL OR ALTER CASING <input type="checkbox"/>	CASING TEST AND CEMENT JOB <input type="checkbox"/>
OTHER: <input type="checkbox"/>	OTHER: Cement Squeeze & Test Casing. <input checked="" type="checkbox"/>

12. Describe Proposed or Completed Operations (Clearly state all pertinent details, and give pertinent dates, including estimated date of starting any proposed work) SEE RULE 1103.

This Approval of Temporary  
Abandonment Expires 2-13-2000

NMGSAU #1905 (01-18-95 To 01-30-95)

Move in and rig up X-Pert Well Service and Star Tool. Bled 340# off well. Unflanged wellhead and installed 6" 600 BOP. Unloaded and racked 2-7/8" H-40 workstring. TIH w/7" fullbore packer, SN and picked up 61 jts. of 2-7/8" tubing. Set packer at 1,917'. Pressured below packer to 560#. Casing held. TOH w/1 jt. of 2-7/8" tubing. Set packer at 1,886'. Pressure tested annulus to 540#. Casing held OK. Attempted to est. injection rate at 600#. Lost 40# in 15 mins. Bled off 9-5/8" x 7" intermediate casing., installed gauge and press. increased to 100# in 15 mins. Again attempted to est. inj. rate at 820#. Lost 80# in 20 mins. Released pressure and allowed well to flow back water that had been pumped. Found 100# on 9-5/8" x 7" intermediate casing annulus. Pressure bled right off. Checked gas flow w/explosion meter and found 0 PPM H2S and 23% L.E.L. Installed gauge and press. increased to 100#, in  
(Continued On Back)

I hereby certify that the information above is true and accurate to the best of my knowledge and belief.

SIGNATURE Terry L. Harvey TITLE Sr. Staff Assistant DATE 2-13-95  
TYPE OR PRINT NAME Terry L. Harvey TELEPHONE NO. 393-2144

(This space for State Use) ORIGINAL SIGNED BY  
GARY WINK  
FIELD REP. II

APPROVED BY \_\_\_\_\_ TITLE \_\_\_\_\_ DATE \_\_\_\_\_  
CONDITIONS OF APPROVAL, IF ANY:

FEB 16 1995

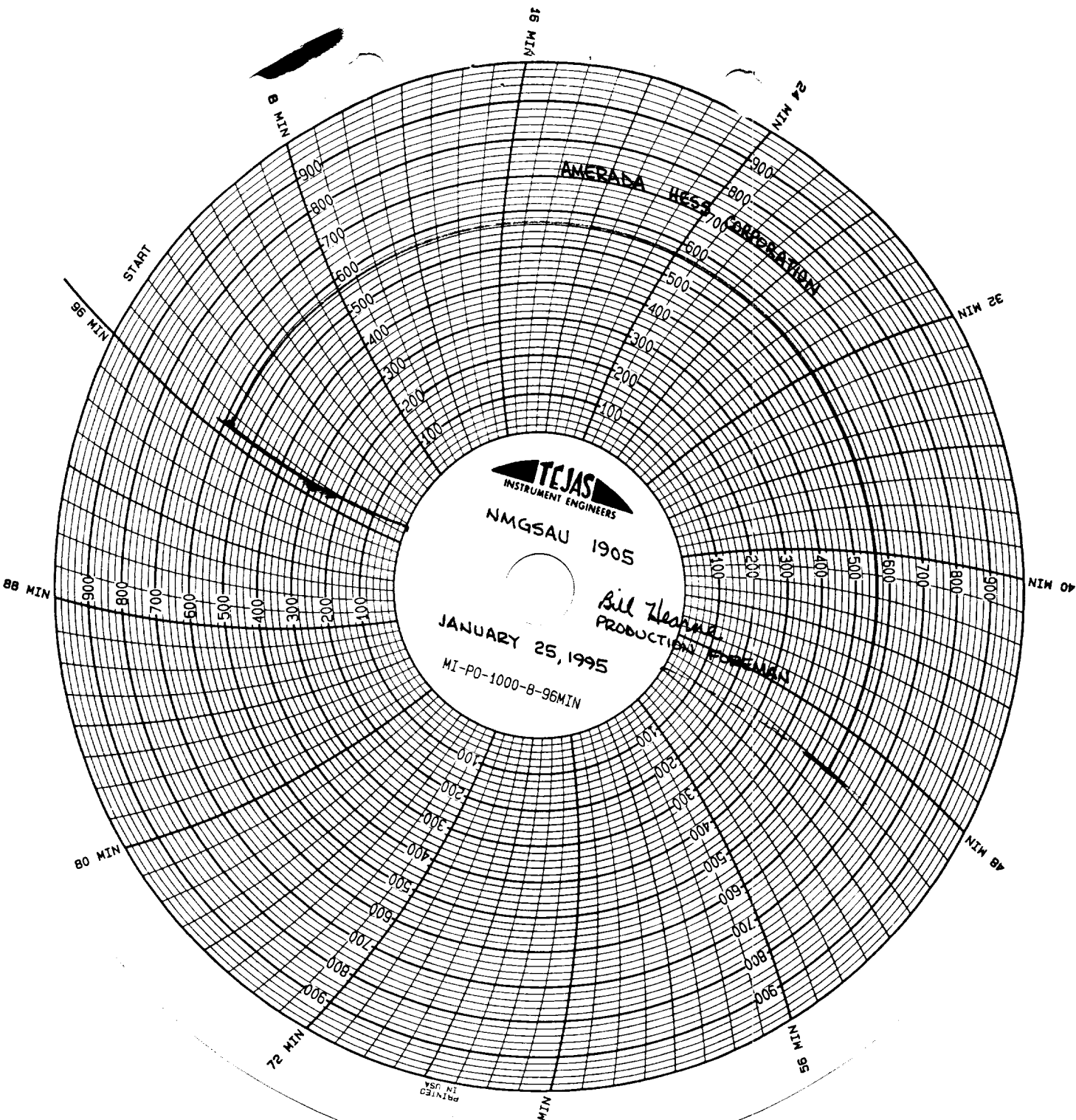
(01-18-95 Thru 01-30-95) Continued

12 mins., and stopped. Bled off pressure. Attempted to pump down 9-5/8" intermediate casing and pressured to 500#. Lost 200# in 30 mins. TOH w/60 jts. of 2-7/8" tubing, SN and 7" fullbore packer. Waiting on Schlumberger. Schlumberger moved in and rigged up. Ran cement bond log from 2,437'-100'. Found cement outside 7" casing to 2,106'. Free pipe from 2,100'-1,122'. Found cement bond from 1,120'-690'. Schlumberger rigged down and moved out. TIH w/SN, 61 jts. of 2-7/8" tubing, and 2-6' 2-7/8" subs. Tubing open-ended at 1,925'. Halliburton moved in and rigged up. Broke circ. Spotted 50 sacks Class "C" cement w/0.5% CFR-3 at 1,925'. TOH w/2-7/8" tubing subs and 9 jts. of 2-7/8" tubing. Reversed out at 1,632'. TOH w/52 jts. 2-7/8" tubing and SN. TIH w/7" fullbore packer and 48 jts. 2-7/8" tubing. Broke Circ., set packer at 1,513', and tested casing to 500 psi. Squeezed 16.4 sacks, in 4 attempts, w/1,000# max. p.p. Halliburton rigged down and moved out. Closed in. Waiting on cement. Released pressure off casing. Found no pressure on tubing. TOH w/48 jts. of 2-7/8" tubing and 7" fullbore packer. Schlumberger moved in and rigged up. Perforated 7" casing w/4 holes at 650'. Schlumberger rigged down and moved out. TIH w/7" fullbore packer and 10 jts. of 2-7/8" tubing. Set packer at 322' and pressured casing to 600 psi. Est. inj. rate out 13" x 9-5/8" surface and 9-5/8" x 7" intermediate casing strings. Replaced leaking connections in cellar. Wait on Halliburton. Halliburton moved in and rigged up. Pumped 10 bbl. fresh water pad and broke circ. out 13" surface and 9-5/8" intermediate casing strings. Mixed and pumped 375 sacks Class "C" cement w/cement to surface out 13" and 9-5/8" casing strings. Displaced cement w/6 bbls. fresh water, closed casing valves, and squeezed in additional 6 bbls. displacement at 550# p.p. Calc. TOC at 573'. Pumped est. 37 sacks cement to pit. Closed in. Waiting on cement. TOH w/10 jts. of 2-3/8" tubing and 7" fullbore packer. Removed 6" 600 BOP, removed 9-5/8" intermediate riser, and found cement to surface on surface and intermediate casing strings. Cut off 7" casing and removed 7-1/16" ID-2M OCT tubing head. Cut 9-5/8" casing and split 9-5/8" Hinderliter casing head w/2-3" outlets. Weld on 7" SJ x 8rd and 9-5/8" SJ x 8rd collars. Installed 9-5/8" casing stub and 9-5/8" 8rd x 11"-3M National casing head w/2-2" LPO. Installed 7" casing stub, land casing in slips, cut off casing, and installed primary and secondary seals. Bolt on 11'-3M x 7-1/16" 10-3M National DP-70 tubing spool w/2-2" LPO. Pressure tested flanges and seals. Test held. Installed 6" 900 BOP. TIH w.6-1/4" bit, P.U. 6 4-3/4" drill collars, and 13 jts. of 2-7/8" tubing. Tagged cement at 569'. Installed stripper head., TOH w/1 jt. 2-7/8" tubing. Bit at 550'. P.U. power swivel. Tagged cement at 569' and broke circ. Drilled cement from 569'-648' and fell through. Drilled cement stringers to 658'. Ran bit to 683' and circ. hole clean. Pressure test casing and cement squeeze to 550 psi. Charted 15 min. test. Test held. L.D. swivel. TIH w/34 jts. 2-7/8" tubing (50 jts. total) and tagged cement at 1,744'. P.U. power swivel and broke circ. Drilled cement from 1,744'-1,929' fell out. Drilled cement stringers to 1,954'. Ran bit to 2,001' and circ. hole clean. L.D. power swivel. Pressure tested 7" 20# and 4-1/2" 10.5# liner to 580 psi and charted 30 min. test. Lost 20 psi in 16 mins. and drew straight line at 560 psi for 32 mins. Well passed the prior operator casing integrity

(01-18-95 Thru 01-30-95) Continued

test. TOH w/58 jts. of 2-7/8" tubing. L.D. 6 4-3/4" drill collars and 6-1/4" bit. TIH w/3-7/8" bit, P.U. 6 3-1/2" drill collars and 112 jts. of 2-7/8" tubing. Note: P.U. 50 jts. of 2-7/8" tubing on TIH. Tagged at 3,669'. P.O. power swivel and installed stripper head. Displaced wellbore w/140 bbls. fresh water. Drilled cement and 4-1/2" CIBP from 3,669' to 3,671'. TIH w/7 jts. 2-7/8" tubing and tagged at 3,880'. Drilled remainder of CIBP and fill from 3,880' to 3,901'. Circ. hole clean. L.D. swivel and removed stripper head. TOH l.d. w/120 jts. of 2-7/8" tubing, 6 3-1/8" drill collars and 3-7/8" bit. Rig up Schlumberger and ran Gamma-Ray and collar logs. Rig down Schlumberger. Removed 6" 900 BOP and installed wellhead. Rigged down pulling unit and cleaned location. Move in and rig up Jarrel Service. Ran static gradient survey at 3,826' and found static BHP to be 950 psi. Rigged down and moved out. Well closed in. Ready for future use in NMGSAU.

Note: Well TA'd.



**TEJAS**  
INSTRUMENT ENGINEERS

NMGSAU 1905

JANUARY 25, 1995

MI-PO-1000-B-96MIN

Bill Ziegler  
PRODUCTION FOREMAN

AMERATA  
Hess  
CONCRETE

PRINTED IN USA

RECEIVED

FEB 15 1985  
U.S. HOUSE  
OFFICE