

Submit 3 Copies  
to Appropriate  
District Office

State of New Mexico  
Energy, Minerals and Natural Resources Department

Form C-103  
Revised 1-1-89

DISTRICT I  
P.O. Box 1980, Hobbs, NM 88240

DISTRICT II  
P.O. Drawer DD, Artesia, NM 88210

DISTRICT III  
1000 Rio Brazos Rd., Aztec, NM 87410

OIL CONSERVATION DIVISION  
P.O. Box 2088  
Santa Fe, New Mexico 87504-2088

<b>SUNDRY NOTICES AND REPORTS ON WELLS</b> (DO NOT USE THIS FORM FOR PROPOSALS TO DRILL OR TO DEEPEN OR PLUG BACK TO A DIFFERENT RESERVOIR. USE "APPLICATION FOR PERMIT" (FORM C-101) FOR SUCH PROPOSALS.)		WELL API NO. 30-025-04157
1. Type of Well: OIL WELL <input checked="" type="checkbox"/> GAS WELL <input type="checkbox"/> OTHER <input type="checkbox"/>		5. Indicate Type of Lease STATE <input checked="" type="checkbox"/> FEE <input type="checkbox"/>
2. Name of Operator AMERADA HESS CORPORATION		6. State Oil & Gas Lease No. B-1656-2
3. Address of Operator POST OFFICE DRAWER D, MONUMENT, NEW MEXICO 88265		7. Lease Name or Unit Agreement Name NORTH MONUMENT G/SA UNIT BLK. 18
4. Well Location Unit Letter <u>J</u> : <u>1980</u> Feet From The <u>EAST</u> Line and <u>1980</u> Feet From The <u>SOUTH</u> Line Section <u>2</u> Township <u>20S</u> Range <u>36E</u> NMPM <u>LEA</u> County <u></u>		8. Well No. 10
10. Elevation (Show whether DF, RKB, RT, GR, etc.)		9. Pool name or Wildcat EUNICE MONUMENT G/SA

11. Check Appropriate Box to Indicate Nature of Notice, Report, or Other Data	
<b>NOTICE OF INTENTION TO:</b>	<b>SUBSEQUENT REPORT OF:</b>
PERFORM REMEDIAL WORK <input type="checkbox"/>	REMEDIAL WORK <input type="checkbox"/>
TEMPORARILY ABANDON <input type="checkbox"/>	ALTERING CASING <input type="checkbox"/>
PULL OR ALTER CASING <input type="checkbox"/>	COMMENCE DRILLING OPNS. <input type="checkbox"/>
OTHER: <input type="checkbox"/>	PLUG AND ABANDONMENT <input type="checkbox"/>
	CASING TEST AND CEMENT JOB <input type="checkbox"/>
	OTHER: Tested csg. <input checked="" type="checkbox"/>

12. Describe Proposed or Completed Operations (Clearly state all pertinent details, and give pertinent dates, including estimated date of starting any proposed work) SEE RULE 1103.

NMGSAU #1810 07-27-93 Thru 07-30-93

X-Pert Well Service rigged up pulling unit and TOH with a 1-1/4" x 16' polished rod with a 1-1/2" x 6' liner, 2-7/8" x 6' Pony rod, 7/8" x 4' pony rod, 2 7/8" x 2' pony rods, 72-7/8" sucker rods, 76-3/4" sucker rods, 3/4" on-off tool, 3 3/4" sucker rods, 3/4" x 2' pony rod and a 2" x 1-1/4" x 12' pump #A-0575. Found pump pull tube parted, left pump in tubing. Removed 8-5/8" National Type "E" tubinghead packing and slip assembly and installed an 8-5/8" Larkin adapter flange and a 6" 900 manual BOP. TOH with 12 jts. 2-7/8" tubing and found fluid in tubing string. TIH with a 2-7/8" x 4' perforated tubing sub and 2 jts. 2-7/8" tubing. Rigged up swab equipment and attempted to swab tubing into casing. Found undersized swab cups would not pass below 100'. TIH with a 2-5/16" tubing broach, spang jars and a 1-1/4" weight bar on 2 3/4" sucker rods, tagged at 65' and TOH. Pulled 2 jts. 2-7/8" tbgs., crossover sub, 2-7/8" perforated tbgs. sub and crossover (Continued On Back)

I hereby certify that the information above is true and complete to the best of my knowledge and belief.

SIGNATURE Terry L. Harvey TITLE Staff Assistant DATE 07-30-93

TYPE OR PRINT NAME Terry L. Harvey TELEPHONE NO. 393-2144

(This space for State Use)

Orig. Signed by  
Paul Kautz  
Geologist

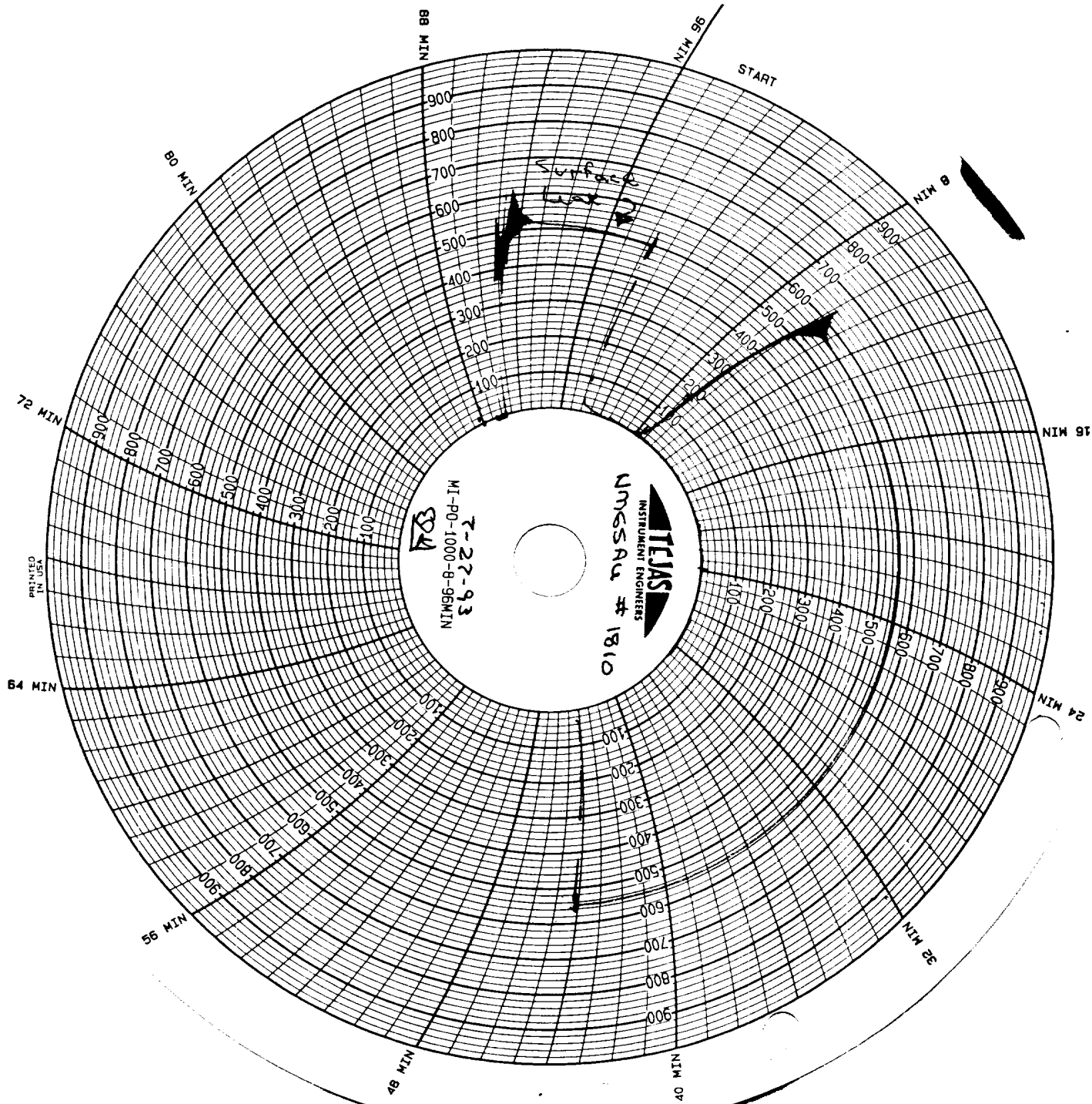
AUG 10 1993

APPROVED BY \_\_\_\_\_ TITLE \_\_\_\_\_ DATE \_\_\_\_\_

CONDITIONS OF APPROVAL, IF ANY:

sub and found bottom crossover sub had a reduced inside diameter. TOH with 107 jts. 2-7/8" tbg., 6-5/8" TAC, 5 jts. 2-7/8" tbg., 1 jt. 2-7/8" salta lined tbg. and a 2-3/8" SN. Recovered pump in 2-7/8" salta joint. TIH with a 5-5/8" drill bit and bit sub on 122 jts. 2-7/8" tbg. Tagged at 3,790', for 110' of fill in openhole. Rotated bit with tongs and drilled from 3,790' to 3,792'. TOH with 60 jts. 2-7/8" tbg. TIH with a 2-5/16" tubing broach, jars and weight bar on 68 3/4" sucker rods. Found broach would not pass through bottom 200' of 2-7/8" tbg. TOH with rods and tubing broach. TOH with 62 jts. 2-7/8" tbg., bit sub and drill bit. Layed down bottom 6 jts. 2-7/8" tbg., due to internal scale buildup. TIH with a 6-5/8" elder lok-set RBP, retrieving tool, 6-5/8" elder model "R" packer and SN on 119 jts. 2-7/8" tbg. Set RBP at 3,689', circulated casing with 100 bbls. fresh water and pressure tested casing from 0' to 3,689'. Pressure decreased from 565 psi to 550 psi in 30 mins. Checked surface-intermediate casing annulus and found 0 psi and slight gas flow, which ceased instantly. Checked intermeidate-production casing annulus and found 140 psi. Flowed gas for 3 minutes and flow ceased. Closed in for 12 hour buildup. Released RBP at 3,689' and TOH with 119 jts. 2-7/8" tbg., SN, 6-5/8" model "R" packer, retrieving tool and 6-5/8" lok-set RBP. TIH with a 5-5/8" drill bit, bit sub, float valve, crossover sub, 9 jts. 2-7/8" tbg., as cavity, crossover sub, 3-3/4" lafleuer bailer, 2-7/8" ported tbg. sub, crossover sub and 113 jts. 2-7/8" tbg. Rigged up power swivel and cleaned out bridges in openhole from 3,792' to 3,900'. Laid down power swivel and TOH with 116 jts. 2-7/8" tbg. and bailer assembly. Recovered an estimated 3 jts. of formation, metal and scale. TIH with a 2-7/8" SN, 1 jt. 2-7/8" 8rd IPC lined tbg. (TK-99), 5 jts. 2-7/8" 10V tbg., 6-5/8" TAC, with 40,000# shear pins, 107 jts. 2-7/8" 10V tbg. and 10 jts. 2-7/8" 8rd tbg. Dropped SV, pressure tested tbg. to 2,000 psi and retrieved SV. Removed 6" 900 manual BOP and adapter flange and installed an 8-5/8" National type "E" tubinghead packing and slip assembly. Set TAC at 3,644', with 14,000# tension and SV at 3,832'. TIH with a 2-1/2" x 1-1/4" x 12' pump #A-1120, 3/4" x 2' pony rod, 3 3/4" sucker rods, 3/4" on-off tool (RH release), 76-3/4" sucker rods, 72-7/8" sucker rods, 7/8" x 6' pony rod, 7/8" x 4' pony rod, 2 7/8" x 2' pony rods and a 1-1/4" x 16' sprayed metal polished rod. Loaded tbg. with fresh water and checked pump action. Cleaned location and rigged down pulling unit. Wellbore accepted into NMGSAU as useable. Resumed producing well.

Test (24 Hours): 31 BOPD, 72 BWP, 12 MCFD



PRINTED  
IN USA

RECEIVED

U.S. HOUSE  
OFFICE