

**NEW MEXICO
OIL CONSERVATION COMMISSION**

Gas Well Plat

Date 6-29-55

Gulf Oil Corporation
Operator

L. W. White
Lease

3-21
Well No.

Name of Producing Formation Queen

Pool Eumont Gas

240 Acres-Gulf's L. W. White Lease

80 Acres-Stanolind's "Gilluly" Lease

No. Acres Dedicated to the Well 320

Application for Non-Standard 320-Acre

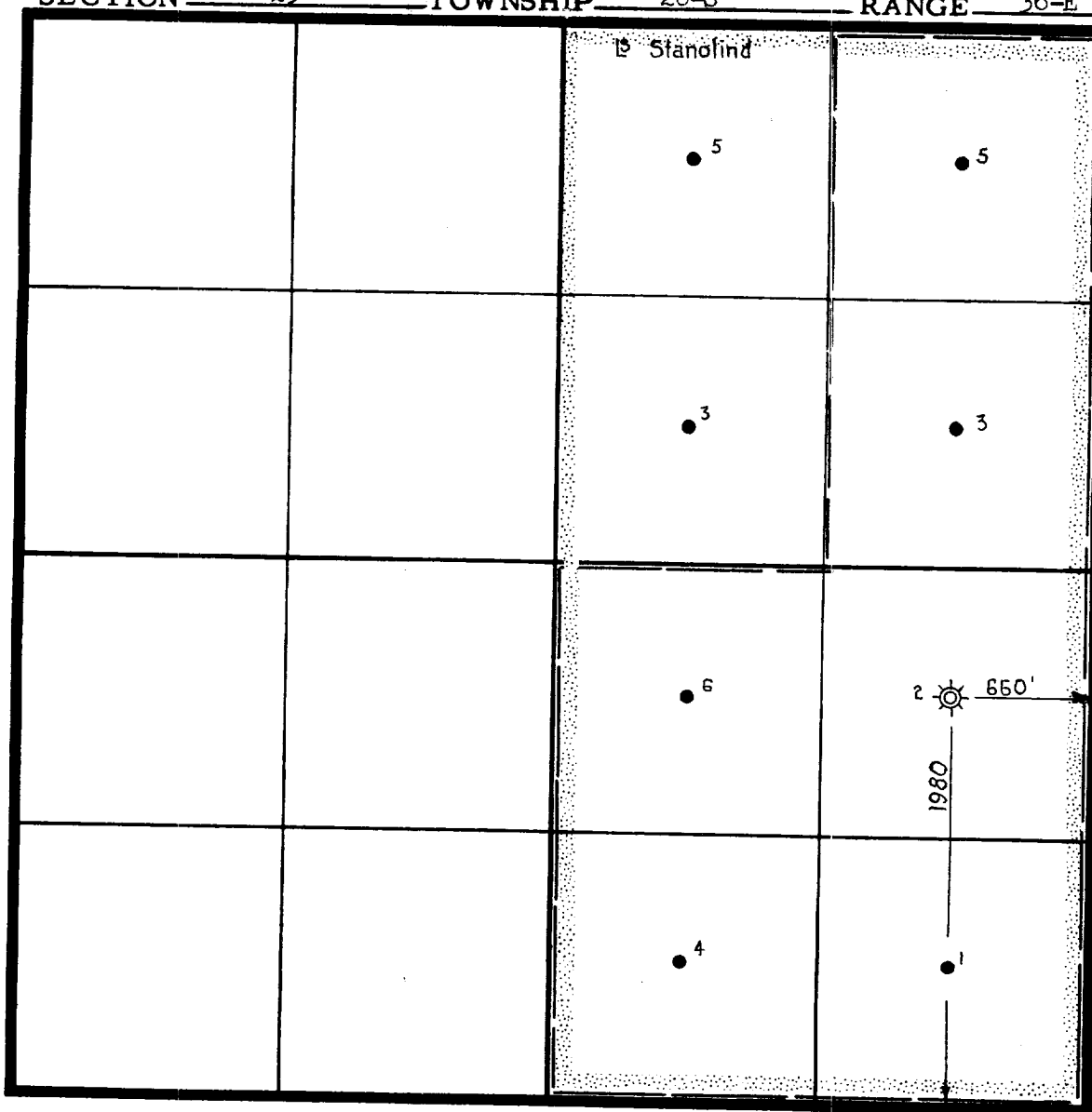
Unit being filed with Oil Conservatio

Commission

SECTION 25

TOWNSHIP 20-S

RANGE 36-E



I hereby certify that the information given above is true and complete to the best of my knowledge.

- - Oil Well
- ☀ - Dual (Gas-Oil)
- - Lease Line
- ~~~~~ - Acreage Dedicated

Name T. W. Rhoads

Position Division Gas Engineer

Representing Gulf Oil Corporation

Address P. O. Box 1290, Fort Worth, Texas

(over)

INSTRUCTIONS

1. Is this gas well a dual completion? Yes X No
2. If the answer to Question 1 is Yes, are there any other
dually completed wells within the dedicated acreage?
Yes No X

A separate plat must be filed for each gas well, outlining the area dedicated to such well and showing the location of all other wells (oil and gas) within the outlined area.

Mail in duplicate to the district office for the district in which the well is located.