

UNITED STATES  
DEPARTMENT OF THE INTERIOR  
GEOLOGICAL SURVEY

SUNDRY NOTICES AND REPORTS ON WELLS

(Do not use this form for proposals to drill or to deepen or plug back to a different reservoir. Use Form 9-331-C for such proposals.)

1. oil ☒ well gas ☐ well other ☐
2. NAME OF OPERATOR  
Amoco Production Company
3. ADDRESS OF OPERATOR  
P. O. Box 68, Hobbs, New Mexico 88240
4. LOCATION OF WELL (REPORT LOCATION CLEARLY. See space 17 below.)  
AT SURFACE: 1980' FSL X 660' FWL  
AT TOP PROD. INTERVAL: (Unit L, NW/4, SW/4)  
AT TOTAL DEPTH:

16. CHECK APPROPRIATE BOX TO INDICATE NATURE OF NOTICE, REPORT, OR OTHER DATA

REQUEST FOR APPROVAL TO:

- TEST WATER SHUT-OFF ☐  
FRACTURE TREAT ☐  
SHOOT OR ACIDIZE ☒  
REPAIR WELL ☐  
PULL OR ALTER CASING ☐  
MULTIPLE COMPLETE ☐  
CHANGE ZONES ☐  
ABANDON\* ☐  
(other) ☐

SUBSEQUENT REPORT OF:

- ☐  
☐  
☐  
☐  
☐  
☐  
☐  
☐  
☐  
☐

5. LEASE  
LC 031736 (b)
6. IF INDIAN, ALLOTTEE OR TRIBE NAME

7. UNIT AGREEMENT NAME

8. FARM OR LEASE NAME  
Gillully B Federal LA/A

9. WELL NO.  
1

10. FIELD OR WILDCAT NAME  
Eunice-Monument Grybg-San Andres

11. SEC., T., R., M., OR BLK. AND SURVEY OR AREA  
25-20-36

12. COUNTY OR PARISH  
Lea
13. STATE  
NM

14. API NO.

15. ELEVATIONS (SHOW DF, KDB, AND WD)  
3554' DF

RECEIVED  
(NOTE: Report results of multiple completion or zone change on Form 9-330.)

MAY 12 1983

OIL & GAS

17. DESCRIBE PROPOSED OR COMPLETED OPERATIONS (Clearly state all pertinent details, and give pertinent dates, including estimated date of starting any proposed work. If well is directionally drilled, give space locations and measured and true vertical depths for all markers and zones pertinent to this work.)\*

Propose to acidize Grayburg-San Andres open hole interval and to perforate and acidize additional Grayburg-San Andres pay per the following:  
Rig up service unit and RIH with tubing and treating packer with 30' tubing as tailpipe. Land tailpipe at 3,741' and set packer approx. 3711'. Acidize Grayburg-San Andres open hole interval with 4400 gals. 15% NE HCL containing 1 gal/1000 gal corrosion inhibitor as follows:

- Run GR/neutron log over Grayburg-San Andres interval 3842' (PBD)-1842'.
- Run base GR/Temp. Survey over Grayburg-San Andres interval 3842'-1842'.
- Pump 2200 gal 15% NEHCL acid at 3-4 BPM. Expect well to go on vacuum.
- Pump 300# graded rock salt and 100# 100 mesh salt in 300 gals 30# gelled brine
- Pump 2200 gals 15% NE HCL at 3-4 BPM.
- Flush to open hole with 15 bbl fresh water. Then over displace with 25 additional bbls fresh water.

Subsurface Safety Valve: Manu. and Type, 0+6-BLM, R 1-HOU 1-F. J. Nash, HQ @ 1-CMH Ft.

18. I hereby certify that the foregoing is true and correct

SIGNED Charles M. Lanning TITLE Ast. Adm. Analyst DATE 5-10-83

APPROVED

(This space for Federal or State office use)

APPROVED BY PETER W. CHESTER  
CONDITIONS OF APPROVAL, IF ANY:

TITLE

DATE

MAY 24 1983

g) Run after stimulation on temp and GR survey 3842'-350' .  
Swab back load. Release packer and POH. RIH with casing gun and perforate Grayburg-San Andres intervals 3723'-26', 3705'-17', 3696'-3702', 3689'-93', 3684'-87' and 3661'-80' with 2 SPF. POH. RIH with tubing and packer with 30' tubing as tailpipe and retrievable bridge plug hung on bottom. Set RBP at 3730' and pull up tailpipe and land at 3650'. Set packer at approx. 3620'. Acidize newly perforate Grayburg-San Andres intervals with 4700 gals. 15% NE HCL acid as follows:

\* Note tag all acid with RA material.

- a) Pump 4700 gals 15% NE HCL acid containing 1 gal/1000 gal corrosion inhibitor pumped at 2-3 BPM.
- b) Flush to perfs with 15 bbl brine water.
- c) Run after stimulation GR/Temp Survey over interval 3730'-3400'.
- d) Swab back load.

Release packer and lower tubing and latch on to and retrieve RBP. POH. RIH with production tubing and seating nipple on bottom and set at 3741'. Run rods and pump and put well on production.

\* Note: Attachments C-102 with rededication of acreage to *Eunice-Monument* Grayburg-San Andres Pool and letter from NMOCD-Hobbs reclassifying pool.

RECEIVED  
MAY 25 1983  
O.C.D.  
HOBBS OFFICE

NEW MEXICO OIL CONSERVATION COMMISSION  
WELL LOCATION AND ACREAGE DEDICATION PLAT

Form C-102  
Supersedes C-128  
Effective 1-1-65

All distances must be from the outer boundaries of the Section.

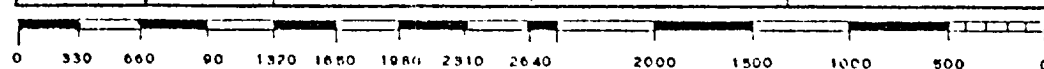
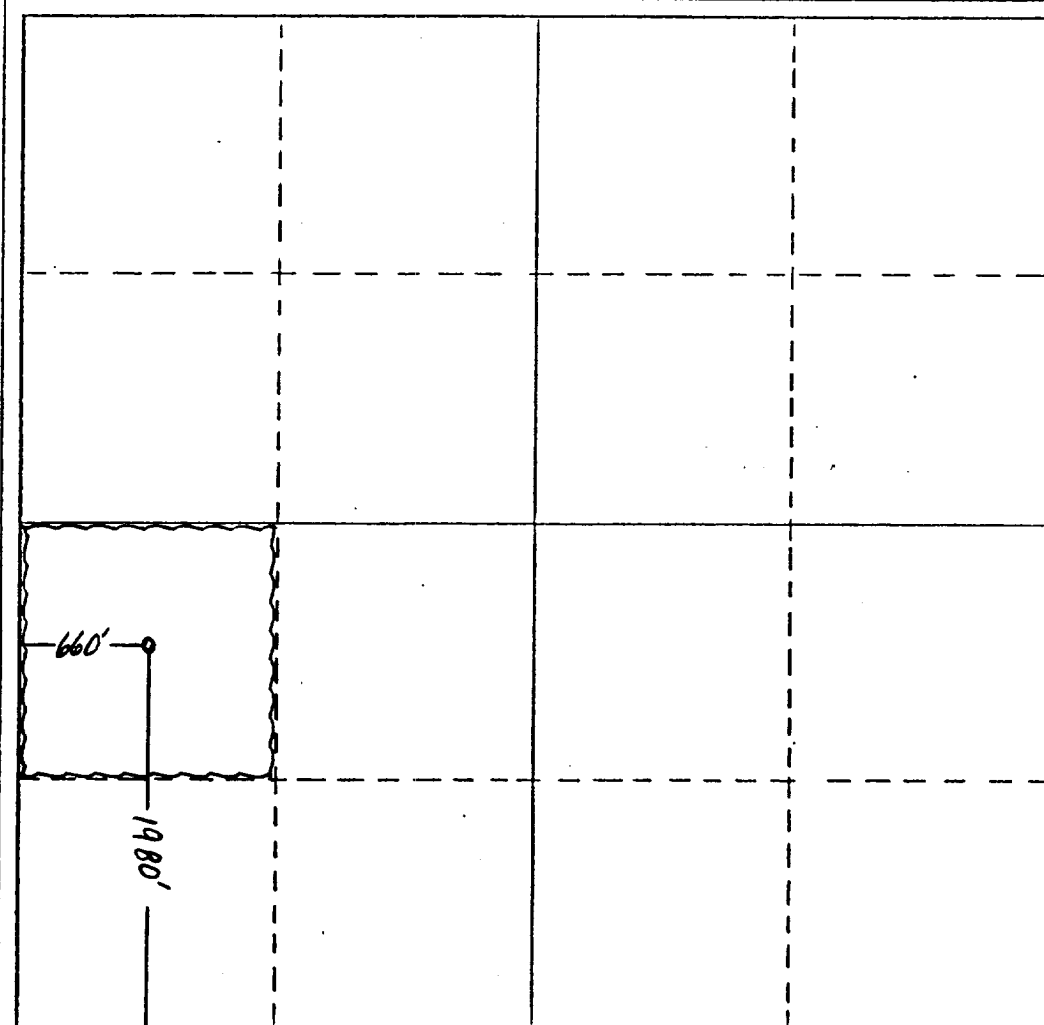
|  |  |                      |  |               |                                |
|--|--|----------------------|--|---------------|--------------------------------|
| Operator<br>Amoco Production Company   |  |                      | Lease<br>Gillully B Federal                    |               | Well No.<br>1                  |
| Unit Letter<br>L   | Section<br>25                              | Township<br>20-South | Range<br>36-East                               | County<br>Lea |                                |
| Actual Footage Location of Well:<br>1980 feet from the South line and 660' feet from the West line |  |                      |  |               |                                |
| Ground Level Elev.<br>3554' DF   | Producing Formation<br>Grayburg-San Andres |                      | Pool<br>Eunice Monument<br>Grayburg-San Andres |               | Dedicated Acreage:<br>40 Acres |

1. Outline the acreage dedicated to the subject well by colored pencil or hachure marks on the plat below.
2. If more than one lease is dedicated to the well, outline each and identify the ownership thereof (both as to working interest and royalty).
3. If more than one lease of different ownership is dedicated to the well, have the interests of all owners been consolidated by communitization, unitization, force-pooling, etc?

☐ Yes ☐ No If answer is "yes," type of consolidation \_\_\_\_\_

If answer is "no," list the owners and tract descriptions which have actually been consolidated. (Use reverse side of this form if necessary.) \_\_\_\_\_

No allowable will be assigned to the well until all interests have been consolidated (by communitization, unitization, forced-pooling, or otherwise) or until a non-standard unit, eliminating such interests, has been approved by the Commission.



CERTIFICATION

I hereby certify that the information contained herein is true and complete to the best of my knowledge and belief.

Name Charles M. Serrin  
Position  
Assist. Admin. Analyst

Company  
Amoco Production Company

Date  
May 10, 1983

I hereby certify that the well location shown on this plat was plotted from field notes of actual surveys made by me or under my supervision, and that the same is true and correct to the best of my knowledge and belief.

Date Surveyed

Registered Professional Engineer and/or Land Surveyor

Certificate No.

RECEIVED  
MAY 25 1983  
O.C.D.  
HOBBS OFFICE



STATE OF NEW MEXICO  
ENERGY AND MINERALS DEPARTMENT  
OIL CONSERVATION DIVISION  
HOBBS DISTRICT OFFICE

TONY ANAYA  
GOVERNOR

May 6, 1983

POST OFFICE BOX 1980  
HOBBS, NEW MEXICO 88240  
(505) 393-6161

Amoco Production Company  
Box 68  
Hobbs, NM 88240

SUBJECT: Amoco Production Co.  
Gillully B Federal Well #1-L in Sec 25, T20S, R36E

Gentlemen:

After examining the well log on the subject well, I have determined that the open hole interval from 3741--3854 produces from the Grayburg Formation. This well should be reclassified from the Eumont Yates-Seven Rivers-Queen Pool to the Eunice-Monument-Grayburg-San Andres Pool. The formation tops in the subject well are: Queen 3345, Queen-Penrose 3488 and Grayburg 3656.

Very truly yours,

OIL CONSERVATION DIVISION

Paul F. Kautz  
Geologist

cc: Well File  
OCD-Santa Fe

COPIES DESTROYED

|                               |    |
|-------------------------------|----|
| RECEIVED<br>HOBBS<br>DISTRICT |    |
| MAY 6 1983                    |    |
| DS                            |    |
| ODS                           |    |
| DAS                           |    |
| DE                            |    |
| DF-1                          |    |
| DF-2                          |    |
| DF-2                          |    |
| DEPLE                         |    |
| SE                            |    |
| AS                            |    |
| 2 PBM                         |    |
| 3 SRW                         |    |
| 4 FILE                        | WF |

RECEIVED  
MAY 25 1983  
O.C.D.  
HARRIS OFFICE