

OIL CONSERVATION DIVISION

P. O. BOX 2088

Form C-102
Revised 10-1-76STATE OF NEW MEXICO
ENERGY AND MINERALS DEPARTMENT

SANTA FE, NEW MEXICO 87501

All distances must be from the outer boundaries of the Section.

Operator Ernie L. Hegwer		Lease Bay Federal		Well No. 2	
Unit Letter F	Section 35	Township 20 S	Range 36 E	County Lea	
Actual Footage Location of Wells: 1980 feet from the North line and 1980 feet from the West line					
Ground Level Elev. 3560	Producing Formation		Pool Eumont Yates 7 Rivers Queen		Dedicated Acreage 40 Acres

1. Outline the acreage dedicated to the subject well by colored pencil or hatchure marks on the plat below.

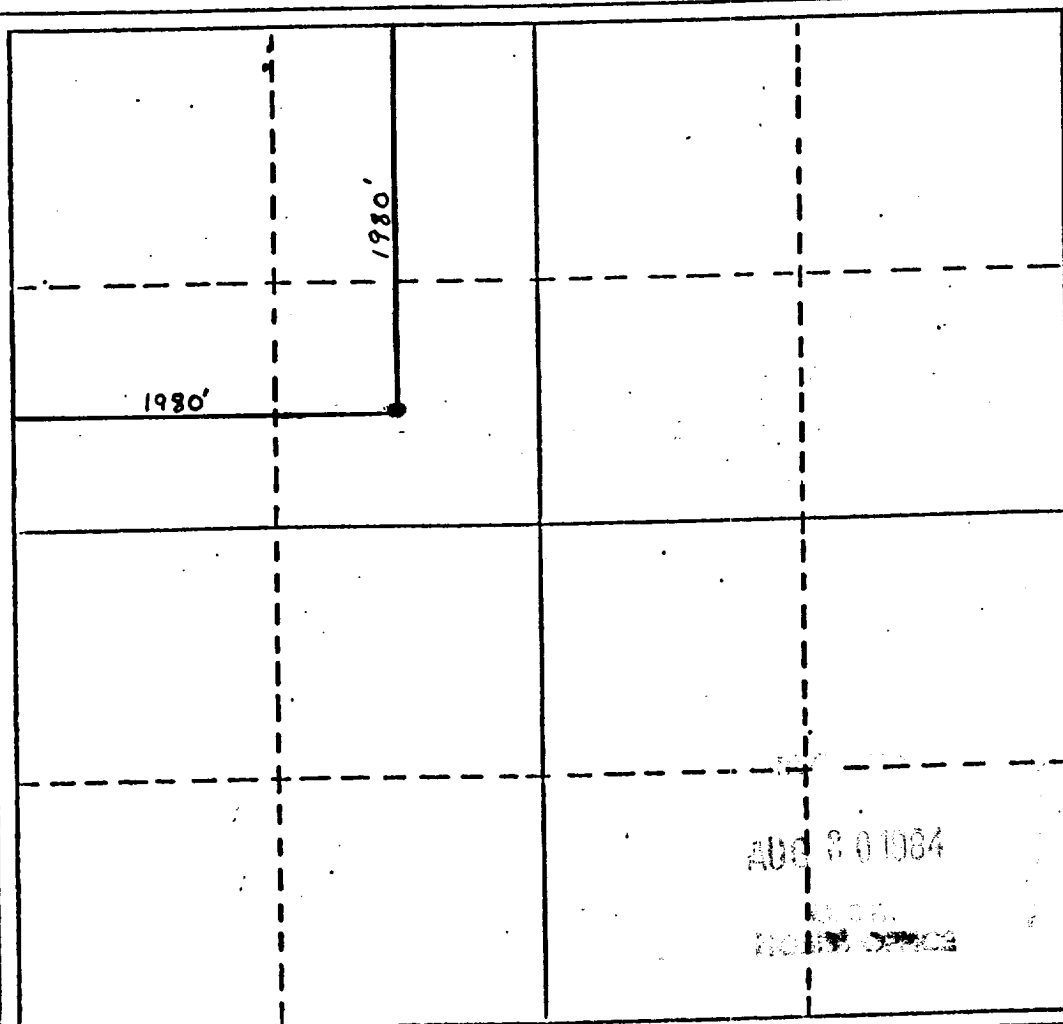
2. If more than one lease is dedicated to the well, outline each and identify the ownership thereof (both as to working interest and royalty).

3. If more than one lease of different ownership is dedicated to the well, have the interests of all owners been consolidated by communitization, unitization, force-pooling, etc?

☐ Yes ☐ No If answer is "yes," type of consolidation _____

If answer is "no," list the owners and tract descriptions which have actually been consolidated. (Use reverse side of this form if necessary.) _____

No allowable will be assigned to the well until all interests have been consolidated (by communitization, unitization, forced-pooling, or otherwise) or until a non-standard unit, eliminating such interests, has been approved by the Division



CERTIFICATION

I hereby certify that the information contained herein is true and complete to the best of my knowledge and belief.

Name **Ernie L. Hegwer**
OwnerPosition
Ernie L. Hegwer Co.
CompanyDate
Aug. 30, 1984

I hereby certify that the well location shown on this plat was plotted from field notes of actual surveys made by me or under my supervision, and that the same is true and correct to the best of my knowledge and belief.

Date Surveyed

Registered Professional Engineer
and/or Land Surveyor

Certificate No.

0 330 660 990 1320 1650 1980 2310 2640 2970 3300 3630 3960 4290 4620 4950 5280 5610 5940 6270 6600

RECEIVED

AUG 30 1984

U.S. AIR FORCE
MAIL ROOM