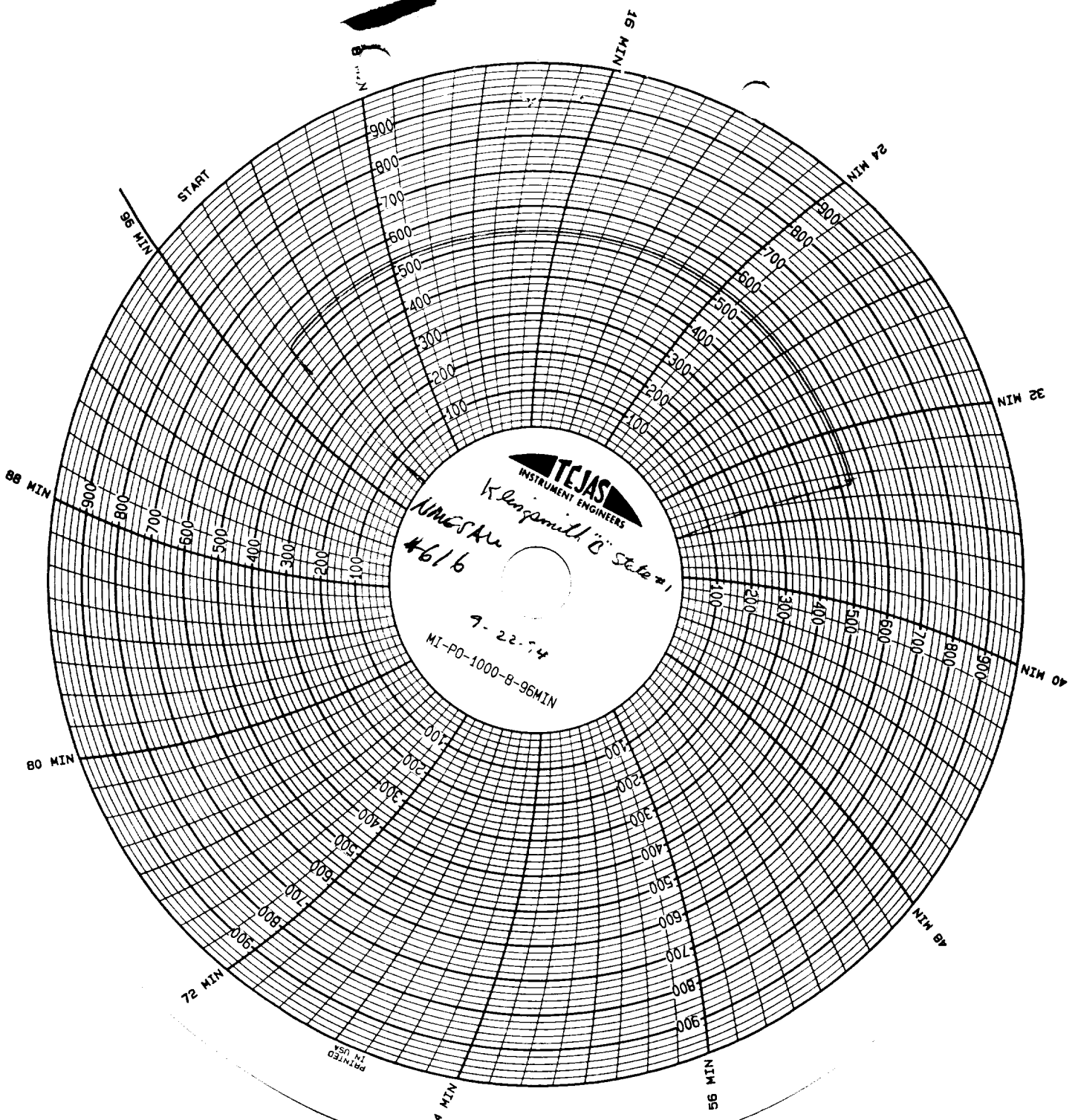


(09-14-94 Thru 10-18-94) Continued

back at 3,922'. TOH w/132 jts. of 2-7/8" tubing. TIH w/FTI sonic hammer and 131 jts. of 2-7/8" tubing. Rig up Knox Service and perform water wash from 3,750' to 3,922'. Acidize from 3,750' to 3,922' w/5,000 gals. 15% NEFE DI HCL acid w/3% DP-77 MX. Max. tubing press.-1,900 psi, min. tbg. press.-700 psi, max. casing press.-700 psi, ISIP-0, and AIR-4 BPM. Total load-158 bbls. Drop ball and shift sleeve. Rig up to swab. Made 17 swab runs and recovered 156 bbls. water. Initial fluid level at 1,400'. final fluid level at 1,800'. Load status minus 2 bbls. Made 37 swab runs and recovered 244 bbls. water. Initial fluid level at 2,000'. Final fluid level at 2,100'. Note: sample showing a trace of oil with remainder being foamy iron sulfide water. Casing pressure increased from 150 psi to 390 psi while swabbing Load status plus 242 bbls. water. 500 psi casing pressure. Bled gas off well. Made 5 swab runs and recovered 54 bbls. water. Note: Had skim of oil on 1st run. Chlorides 20-22,000. Casing pressure increased to 75 psi. Initial fluid level at 2,100'. Final fluid level at 2,200'. Load status plus 296 bbls. L.D. swabbing equipment. TOH w/123 jts. 2-7/8" tubing and FTI's sonic hammer. Replaced blown hydraulic hose on pulling unit. TIH w/2-7/8" SN, 1 jt. 3-1/2" salta lined tubing, 6 jts. 2-7/8" tubing, 7" x 2-7/8" TAC, and 123 jts. 2-7/8" tubing. Removed BOP, set TAC at 3,682' w/20,000# and landed tubing. TIH w/25-175 RHBC 12-4-H4 (A-1035). P.U. 6 1-1/2" K-bars. TIH off racks w/148-3/4" C.E. Grade "D" rods (new) and 20-3/4" rod subs. Seated pump, loaded tubing, and long stroked pump to 500 psi to check pump action. X-Pert Well Service rigged down, cleaned location and moved out. Well returned to production.

Test (24 Hours): 4 BOPD, 143 BWPd, and 30 MCFPD



PRINTED
IN USA