

DISTRICT I
P.O. Box 1980, Hobbs, NM 88240

DISTRICT II
P.O. Drawer DD, Artesia, NM 88210

DISTRICT III
1000 Rio Brazos Rd., Aztec, NM 87410

OIL CONSERVATION DIVISION
P.O. Box 2088
Santa Fe, New Mexico 87504-2088

WELL API NO.	3002505812
5. Indicate Type of Lease	STATE <input type="checkbox"/> FEE <input checked="" type="checkbox"/>
6. State Oil & Gas Lease No.	
7. Lease Name or Unit Agreement Name	NORTH MONUMENT G/SA UNIT BLK. 17
8. Well No.	16
9. Pool name or Wildcat	EUNICE MONUMENT G/SA

SUNDRY NOTICES AND REPORTS ON WELLS
(DO NOT USE THIS FORM FOR PROPOSALS TO DRILL OR TO DEEPEN OR PLUG BACK TO A
DIFFERENT RESERVOIR. USE "APPLICATION FOR PERMIT"
(FORM C-101) FOR SUCH PROPOSALS.)

1. Type of Well: OIL WELL <input checked="" type="checkbox"/> GAS WELL <input type="checkbox"/> OTHER <input type="checkbox"/>	2. Name of Operator AMERADA HESS CORPORATION
3. Address of Operator POST OFFICE DRAWER D, MONUMENT, NEW MEXICO 88265	4. Well Location Unit Letter <u>P</u> : <u>330</u> Feet From The <u>SOUTH</u> Line and <u>840</u> Feet From The <u>EAST</u> Line

Section <u>33</u>	Township <u>19S</u>	Range <u>37E</u>	NMMPM	LEA	County
10. Elevation (Show whether DF, RKB, RT, GR, etc.)					

11. Check Appropriate Box to Indicate Nature of Notice, Report, or Other Data			
NOTICE OF INTENTION TO:	SUBSEQUENT REPORT OF:		
PERFORM REMEDIAL WORK <input type="checkbox"/>	PLUG AND ABANDON <input type="checkbox"/>	REMEDIAL WORK <input type="checkbox"/>	ALTERING CASING <input type="checkbox"/>
TEMPORARILY ABANDON <input type="checkbox"/>	CHANGE PLANS <input type="checkbox"/>	COMMENCE DRILLING OPNS. <input type="checkbox"/>	PLUG AND ABANDONMENT <input type="checkbox"/>
PULL OR ALTER CASING <input type="checkbox"/>	OTHER: <input type="checkbox"/>	CASING TEST AND CEMENT JOB <input checked="" type="checkbox"/>	OTHER: <input type="checkbox"/>

12. Describe Proposed or Completed Operations (Clearly state all pertinent details, and give pertinent dates, including estimated date of starting any proposed work) SEE RULE 1103.

NMGSAU #1716 (09-27-94 Thru 10-20-94)

X-Pert Well Service and Star Tool moved in and rigged up equipment. TOH w/91-3/4", 57-5/8" rods, and 20-125 RHBC 10-3-SO (A-1144). Note: No vacuum on tubing when pump was unseated. Unflanged wellhead and installed 6" 600 BOP. Rowland Trucking hot oiled tubing w/50 bbls. lease oil. Dropped SV and pressure tested tubing to 1,700 psi. Tubing held. Rig up sandline, fished and recovered SV. TOH w/118 jts. 2-7/8" tubing, 5-1/2" x 2-7/8" TAC, 4 jts. 2-7/8" tubing, 1 jt. 2-7/8" salt lined tubing and 2-3/8" SN. Tih w/5-1/2" Model "G" loc-set RBP, SN, and 120 jts. of 2-7/8" tubing. Set RBP at 3,661'. Pumped 95 bbls. fresh water. Well failed to load. Reset RBP, pumped 90 bbls. fresh water and again 5-1/2" casing failed to load. Released 5-1/2" BRP. TOH w/2 jts. 2-7/8" tubing. Set RBP at 3,601'. Pumped 80 bbls. fresh water w/same results. Released RBP. TOH w/118 jts. 2-7/8" tubing, SN and 5-1/2" Model "G"

I hereby certify that the information above is true and complete to the best of my knowledge and belief.

SIGNATURE Terry L. Harvey TITLE Sr. Staff Assistant DATE 10-24-94
TYPE OR PRINT NAME Terry L. Harvey TELEPHONE NO. 393-2144

(This space for State Use)

ORIGINAL SIGNED BY
CARLY YANK
FIELD REP. II

APPROVED BY _____ TITLE _____ DATE _____

CONDITIONS OF APPROVAL, IF ANY:

NOV 14 1994

(09-27-94 Thru 10-20-94) Continued

RBP. Replaced BP. TIH w/5-1/2" Model "G" loc-set RBP, SN and 118 jts. 2-7/8" tubing. Set RBP at 3,601'. Pumped 85 bbls. fresh water. Well failed to load and circ. Note: found no signs of communications w/8-5/8" Braden Head. Released 5-1/2" RBP. TOH w/3 jts. 2-7/8" tubing and set 5-1/2" Model "G" loc-set BP at 2,511'. Loaded 5-1/2" casing w/80 bbls. fresh water. Broke circulation w/additional 80 bbls. fresh water. Pressure tested casing to 600 psi. Lost 300 psi in 2 mins. TOH w/115 jts. of 2-7/8" tubing, SN and retrieving head. TIH w/5-1/2" fullbore packer, SN and 58 jts. of 2-7/8" tubing. Set packer at 1,774'. Tested casing below packer to 580 psi. Casing held. TOH w/2 jts. 2-7/8" tubing. Set packer at 1,715'. Tested annulus to 600 psi. Casing held. Isolated 5-1/2" casing leak interval from 1,715' to 1,774' (59'). Attempted to est. injection rate through casing leak. Pressured to 680 psi. Bled to 0 psi in 1-1/2" mins. TOH w/56 jts. of 2-7/8" tubing, SN and packer. TIH w/2-7/8" SN and 60 jts. of 2-7/8" tubing. Tubing OE at 1,830'. Slurried and pumped 2 sacks sand. TOH w/1 jt. 2-7/8" tubing open ended at 1,797'. Halliburton moved in and rigged up. Broke circulation and spotted 50 sacks Micro-Matrix cement at 1,797'. TOH w/17 jts. of 2-7/8" tubing and reversed out at 1,285'. TOH w/remaining 42 jts. of 2-7/8" tubing and SN. TIH w/5-1/2" fullbore packer, SN and 40 jts. 2-7/8" tubing. Loaded hole, set packer at 1,227' and pressured annulus to 500 psi. Squeezed 4-1/2 sacks into leak in 5 attempts. Max. pp-1,065 psi. CI-1,000 psi. Calc. TOC at 1,349'. TOH w/40 jts. 2-7/8" tubing, SN and 5-1/2" fullbore packer. TIH w/4-3/4" bit, p.u. 6 3-1/2" drill collars, and 42 jts. of 2-7/8" tubing. Tagged cement at 1,450'. P.U. power swivel and installed stripper head. Drilled cement from 1,450' to 1,776' and fell out. Drilled cement stringers from 1,778' to 1,800'. Ran bit to 1,845' and circ. well clean. Pressure test cement squeeze to 560 psi. Casing held. L.D. swivel and removed stripper head. TOH w/54 jts. 2-7/8" tubing, 6 3-1/2" drill collars and 4-3/4" bit. TIH w/retrieving head, SN and 115 jts. 2-7/8" tubing. Tagged sand at 3,497'. P.U. power swivel and circ. sand off RBP. Caught and released RBP. TOH w/55 jts. 2-7/8" tubing. TOH w/60 jts. 2-7/8" tubing, SN, retrieving head, and 5-1/2" Model "G" loc-set RBP. TIH w/SN and 124 jts. 2-7/8" tubing. Tagged fill at 3,774'. Note: have 28' of fill. TOH w/4 jts. 2-7/8" tubing open ended at 3,653'. Slurried and pumped 10 sacks sand to cover perms. Allowed sand to settle. Tagged sand at 3,718'. Pulled tubing to 3,653'. Slurried and pumped 2 sacks sand. Allowed sand to settle. Tagged sand at 3,705'. TOH w/122 jts. 2-7/8" tubing and SN. TIH w/5-1/2" fullbore packer, SN and 117 jts. 2-7/8" tubing. Set packer at 3,571'. Pumped 60 bbls. Casing failed to load. TOH w/1 jt. and set packer at 3,540'. Loaded casing w/55 bbls. Pressure tested casing to 600 psi. Lost 200 psi in 8 mins. TOH w/2 jts. of 2-7/8" tubing and set packer at 3,478'. Pumped 38 bbls. to load casing. Pressure tested casing to 640 psi. Lost 230 psi in 6 mins. TOH w/58 jts. of 2-7/8" tubing. Set packer at 1,715'. Loaded casing and again failed to pressure test. Note: feel packer is holding. TOH w/remaining 56 jts. of 2-7/8" tubing, SN and 5-1/2" fullbore packer. Replaced packer. TIH w/5-1/2" fullbore packer, SN and 114 jts. of 2-7/8" tubing. Set packer at 3,478'. Loaded and pressure tested casing to 600 psi. Casing held. Est. inj. rate

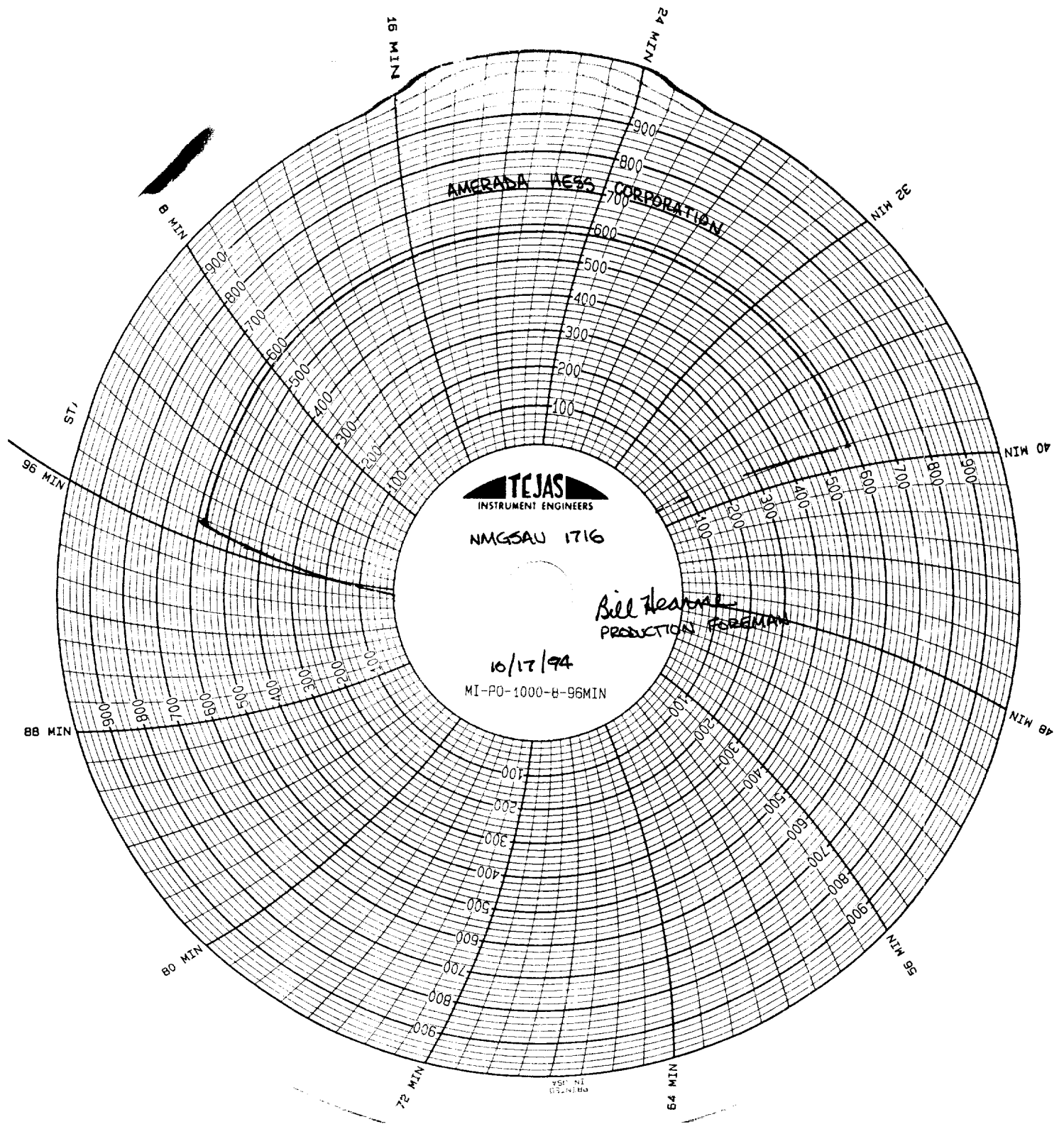
(09-27-94 Thru 10-20-94) Continued

w/53 bbls. fresh water at 4 BPM and caught 200 psi. Pumped an additional 30 bbls. at 4 BPM at 200 psi. Note: est. casing leak at 3,540'-3,661'. TOH w/114 jts. 2-7/8" tubing, SN and 5-1/2" packer. TIH w/5-1/2" cement retainer, SN and 112 jts. of 2-7/8" tubing. Retainer free at 3,415'. Halliburton moved in and rigged up. Displaced tubing, set cement retainer at 3,415', pressure tested tubing to 1,500#, loaded and pressure tested casing to 500 psi. Established injection rate of 4 BPM at 250#. Squeeze 5-1/2" casing leak, thru retainer, w/75 sacks Premium Plus cement w/3% Halad-9 mix followed by 125 sacks Premium Plus cement w/2% CACL. Displaced w/19 bbls. fresh water. Max. pp-560 psi. Stung out of retainer and reversed out. TOC 10' above retainer at 3,405'. TOH w/112 jts. 2-7/8" tubing, SN and setting tool. TIH w/4-3/4" bit, p.u. 6 3-1/2" OD drill collars, and 106 jts. 2-7/8" tubing. Tagged cement at 3,408'. P.U. power swivel and installed stripper head. Drilled cement from 3,408'-3,415', cement retainer from 3,415' to 3,417' and solid cement from 3,418' to 3,834'. Circ. well clean. L.D. swivel. Pulled bit to 3,502'. Picked up power swivel and broke circ. Drilled cement from 3,534' to 3,691'. Circ. hole clean. Note: have not drilled out of cement. Pressure tested 5-1/2" 15.5# casing to 580 psi. Lost 500 psi in 7 mins. Retested casing w/same results. L.D. swivel and removed stripper head. TOH w/115 jts. 2-7/8" tubing, 6 3-1/2" drill collars and 4-3/4" bit. TIH w/5-1/2" fullbore packer, SN and 115 jts. 2-7/8" tubing. TIH w/5 jts. 2-7/8" tubing. Packer at 3,643'. Circ. well w/clean fresh water. Set packer at 3,643'. Pressure tested below packer to 640 psi. Held. Pressure tested casing to 600 psi. Casing bled to 0 psi in 13 mins. Same results on retest. TOH w/2 jts. 2-7/8" tubing. Set packer at 3,600'. Tested casing to 560 psi and lost 300 psi in 4 mins. TOH w/4 jts. 2-7/8" tubing. Set packer at 3,478'. Pressure tested casing to 540 psi. Charted 30 min. test. Casing held. Note: isolated 5-1/2" casing leak interval from 3,478' to 3,643' (165'). TOH w/114 jts. 2-7/8" tubing, SN and 5-1/2" fullbore packer. TIH w/SN and 120 jts. 2-7/8" tubing. Tubing open ended at 3,651'. Halliburton moved in and rigged up. Broke circulation and spotted 40 sacks Micro-Matrix cement plug at 3,651'. TOH w/14 jts. 2-7/8" tubing and reversed out at 3,226'. TOH w/remaining 106 jts. 2-7/8" tubing and SN. TIH w/5-1/2" fullbore packer, SN and 104 jts. 2-7/8" tubing. Set packer at 3,172' and tested casing to 650'. Squeezed 3 sacks into leak in 4 attempts. Max. press.-1,000#. CI press.-1,000#. CALC. TOC at 3,285'. Waiting on cement. TOH w/104 jts. 2-7/8" tubing, SN and 5-1/2" fullbore packer. TIH w/4-3/4" bit, 6 3-1/2" drill collars, and 105 jts. 2-7/8" tubing. Tagged cement at 3,350'. P.U. power swivel and installed stripper head. Drilled cement from 3,350' to 3,653'. Fell out of cement. Ran bit to 3,691'. No cement stringers. Circ. well clean and l.d. swivel. Pressure tested 5-1/2" casing to 580 psi and charted 30 min. test. Casing held and passed the NMGSAU casing integrity test. P.U. power swivel and broke circ. Drilled cement from 3,691' to 3,705'. Circ. bit down from 3,705' to 3,802'. Returns w/sand and cement fines. Circ. hole clean. L.d. swivel. TOH w/4 jts. 2-7/8" tubing. Bit at 3,691'. TIH w/4 jts. 2-7/8" tubing and tagged at 3,802' (PBTD) no fill. Removed stripper head. TOH w/119 jts. 2-7/8" tubing, L.D. 6 3-1/2" drill collars, and 4-3/4" bit. TIH w/2-3/8" SN (new), 1 jt.

(09-27-94 Thru 10-20-94) Continued

2-7/8" salt lined, 4 jts. 2-7/8" tubing, 5-1/2" x 2-7/8" TAC, and 118 jts. 2-7/8" tubing. Removed BOP, set TAC at 3,599' w/22,000#, and flanged up wellhead. TIH w/repairs 20-125-RHBC 06-3-S4 (A-1078), 57-5/8" and 91-3/4" rods. Loaded tubing and l.s. pump to check pump action. Pressured tubing to 500 psi. Held. X-Pert Well Service rigged down and cleaned location. Waiting to install pumping unit, build wellhead, and tie-in flowline. Pumping unit installed and tie in made. Resume producing well.

Test (24 Hours): 4 BOPD, 17 BWPD and 39 MCFPD



AMERADA HESS CORPORATION

TEJAS
INSTRUMENT ENGINEERS

NMGS AU 1716

10/17/94

MI-PO-1000-B-96MIN

Bill Heavner
PRODUCTION FOREMAN