

Bertha Barber No. 6
 UL 'L', 1980' FSL, 660' FWL
 Section 5, T-20-S, R-37-E
 Lea County, NM
 API # 30-025-05911

CURRENT WELLBORE DIAGRAM

DEC 1936: Drilled to 3890'.
 Completed OH from 3817' to TD.
 Acidized w/ 2000 gals.

MAY 1939: Acidized OH
 w/ 2000 gals.

JUL 1954: Installed rods, pump
 and pumping unit.

JAN 1965: Acidized OH
 w/ 250 gals.

DEC 1975: Shut well in.

NOV 1983: Set CIBP at 3816'.
 Selectively perforated from
 3730' - 3808' w/ 2 JSPF (34 holes).
 Acidized w/ 1600 gals 15% HCl.
 Tested 100% water.

Set cmt retainer at 3715'.
 Cmt sqz'd w/ 150 sks.
 Selectively perforated from
 3606' - 3674' w/ 2 JSPF (18 holes).
 Acidized w/ 1500 gals 15% HCl.
 Tested 99% water.

Set CIBP at 3598'.
 Selectively perforated from
 3504' - 3574' w/ 1 JSPF (12 holes).
 Acidized w/ 1200 gals 15% HCl.
 Tested 100% water.
 Shut well in.

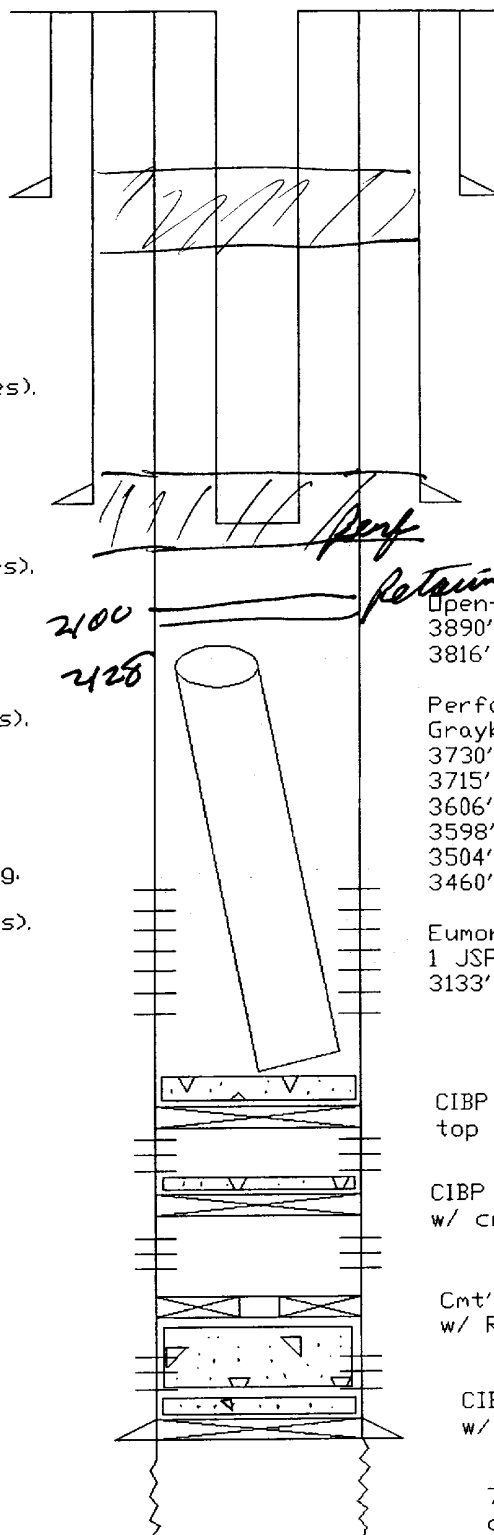
DEC 1988: Set CIBP at 3460' and
 dump 2 sk of cmt on top of plug.
 Selectively perforated from
 3133' - 3349' w/ 1 JSPF (53 holes).
 Acidized w/ 6000 gals 15% HCl.
 Tested 168 MCF/D & 46 BWPD.
 Set CIBP at 3228'.
 Did not regain gas production.

DEC 1992: Drill out CIBP at 3228'.
 Swab tested.
 Acidized w/ 1000 gals 15% HCl.
 Swab tested. Shut well in.

FEB 1993: Swab Test well.
 Ran pump & rods.

OCT 1993: Shut well in.

APR 1998: Tubing parted
 while PDDH, LD 16 jts.
 Fished for 5 days
 recovered 29 jts.
 Left 57 jts in hole with
 top of fish at 2128'.



KB: 3570'
 GL: 3559'

10 sack

surface shoe 50 in/50 out

13', 40#/ft,
 casing set at 141'.
 Cemented w/ 125 sks,
 circulated to surface.

9-5/8", 36#/ft,
 casing set at 1105'.
 Cemented w/ 500 sks,
 circulated to surface.

4 1/2' shoe 50 in/50 out

Perf Retainer

Open-Hole:
 3890' - 3817' Below CIBP
 3816' CIBP w/ cmt

Perforations:
 Grayburg / San Andres
 3730' - 3808' Cmt'd below Retainer
 3715' Cmt Retainer
 3606' - 3674' Below CIBP
 3598' CIBP w/ cmt
 3504' - 3574' Below CIBP
 3460' CIBP w/ cmt

Eumont
 1 JSPF (51 holes)
 3133' - 3349'

CIBP @ 3460' and
 top of cmt @ 3429'

CIBP @ 3598'
 w/ cmt on top

Cmt'd w/ 150 sks
 w/ Retainer at 3715'

CIBP @ 3816'
 w/ cmt on top

7", 24 #/ft,
 casing set at 3817'.
 Cemented w/ 400 sks.
 Estimated TOC from
 GR-CBL-CLL at 2200'.

PBTD: 3429' CIBP w/ cmt
 TD: 3890'

BERTHA BARBER NO. 6

**UL 'L', 1980' FSL and 660' FWL
Section 5, T-20-S, R-37-E
Lea County, New Mexico**

Date: December 1, 1998
AFE No:
Cost: \$17,000 (2 Days)

Purpose: Plug & Abandon

Elevation: **KB:** 3570' **PBTD:** 3429' CIBP w/ 2 sks cmt
GL: 3559' **TD:** 3890'

Surface Casing: 13", 40 lb/ft, casing set at 141'. Cemented with 125 sks, circulated to surface.

Intermediate Casing: 9-5/8", 36 lb/ft, casing set at 1105'. Cemented with 500 sks, circulated to surface.

Production Casing: 7", 24 lb/ft, casing set to 3817'. Cemented with 400 sks. Estimated TOC at 2200' from GR-CBL-CLL.

Tubing/BHA: See Attached Wellbore Diagram, 40 jts of 2-3/8".

Completion: Eumont (YSRQ): 1 JSPF (51 holes)
3133' - 3349'

Grayburg / San Andres (Abandon)
3504' - 3574' w/ 1 JSPF (12 holes) ; Below CIBP at 3460' w/ 2 sks cmt on top
3606' - 3674' w/ 2 JSPF (18 holes) ; Below CIBP at 3598' w/ 2 sks cmt on top
3730' - 3808' w/ 2 JSPF (34 holes) ; Cmt Sqz w/ 150 sks below retainer at 3715'
Open-Hole: 3817' - 3890' ; Below CIBP at 3816' w/ 1 sks cmt on top

Anticipated SBHP: 100 psig

Safety Considerations: 1. Hold daily safety meeting to discuss procedures and safety issues.
2. Top of Anhydrite at 1055'
3. Top of Salt at 1150'
4. Base of Salt at 2205'

PLUG & ABANDON PROCEDURE

1. Inspect location. Test safety anchors and replace as needed.
2. MIRU PU. Disconnect surface equipment.
3. ND wellhead and install manual BOP equipment.
4. POOH with 2 3/8" tubing.
- 5.
- 6.
- 7.
- 8.
9. POOH with tubing, and lay down notched collar.
10. TIH with 2 3/8" tubing to 3530'.
11. ND BOP equipment and NU wellhead.
- 12.
13. RDMO PU.
- 14.