

Submit 3 Copies
to Appropriate
District Office

State of New Mexico
Energy, Minerals and Natural Resources Department

Form C-103
Revised 1-1-89

DISTRICT I
P.O. Box 1980, Hobbs, NM 88240

DISTRICT II
P.O. Drawer DD, Artesia, NM 88210

DISTRICT III
1000 Rio Brazos Rd., Aztec, NM 87410

OIL CONSERVATION DIVISION
P.O. Box 2088
Santa Fe, New Mexico 87504-2088

WELL API NO.

30-025-05935

5. Indicate Type of Lease

STATE ☐

FEE ☒

6. State Oil & Gas Lease No.

7. Lease Name or Unit Agreement Name

NORTH MONUMENT G/SA UNIT
BLK 20

8. Well No.

2

9. Pool name or Wildcat

EUNICE MONUMENT G/SA

SUNDRY NOTICES AND REPORTS ON WELLS
(DO NOT USE THIS FORM FOR PROPOSALS TO DRILL OR TO DEEPEN OR PLUG BACK TO A
DIFFERENT RESERVOIR. USE "APPLICATION FOR PERMIT"
(FORM C-101) FOR SUCH PROPOSALS.)

1. Type of Well:

OIL
WELL ☒

GAS
WELL ☐

OTHER

2. Name of Operator

AMERADA HESS CORPORATION

3. Address of Operator

POST OFFICE DRAWER D, MONUMENT, NEW MEXICO 88265

4. Well Location

Unit Letter B : 990 Feet From The NORTH Line and 2310 Feet From The EAST Line

Section 6 Township 20S Range 37E NMPM LEA County

10. Elevation (Show whether DF, RKB, RT, GR, etc.)

11. Check Appropriate Box to Indicate Nature of Notice, Report, or Other Data
NOTICE OF INTENTION TO:

PERFORM REMEDIAL WORK ☐

PLUG AND ABANDON ☐

TEMPORARILY ABANDON ☐

CHANGE PLANS ☐

PULL OR ALTER CASING ☐

OTHER: ☐

SUBSEQUENT REPORT OF:

REMEDIAL WORK ☐ ALTERING CASING ☐

COMMENCE DRILLING OPNS. ☐ PLUG AND ABANDONMENT ☐

CASING TEST AND CEMENT JOB ☐

OTHER: CASING TEST. ☐

12. Describe Proposed or Completed Operations (Clearly state all pertinent details, and give pertinent dates, including estimated date of starting any proposed work) SEE RULE 1103.

NMGSAU #2002 07-28-93 Thru 08-02-93

DA&S Well Service rigged up pulling unit and TOH with a 1-1/4" x 16' polished rod with a 1-1/2" x 8' liner, 62-7/8" sucker rods, 81-3/4" sucker rods and a 2" x 1-1/4" x 10' pump #A-0581. Removed 6" 600 tubinghead flange and slip assembly and installed a 6" 600 spool and a 6" 600 manual BOP. TOH with 109 jts. 2-3/8" tbg., 1 jt. 2-7/8" salta lined tubing and a 2-3/8" SN. Found bottom 3 jts. of 2-3/8" tbg. severely corroded, with numerous holes. Found remainder of tubing string with varying degrees of external pitting. TIH with 106 jts. 2-3/8" tbg. and TOH laying down 106 jts. 2-3/8" tbg. Received 24 jts. 2-7/8" 8rd tbg. and 109 jts. 2-7/8" 10V tbg. on location as replacement tubing string. TIH with a 5-5/8" drill bit and sub on 123 jts. 2-7/8" tbg., tagged at 3,632', for 3' of fill in 6-5/8" casing and TOH with 123 jts. tbg., bit sub and drill bit. TIH with a 6-5/8" Elder lok-set retrievable bridge
(Continued On Back)

I hereby certify that the information above is true and complete to the best of my knowledge and belief.

SIGNATURE Terry L. Harvey TITLE Staff Assistant DATE 08-03-93

TYPE OR PRINT NAME Terry L. Harvey TELEPHONE NO. 393-2144

(This space for State Use)

Orig. Signed by
Paul Kautz
Geologist

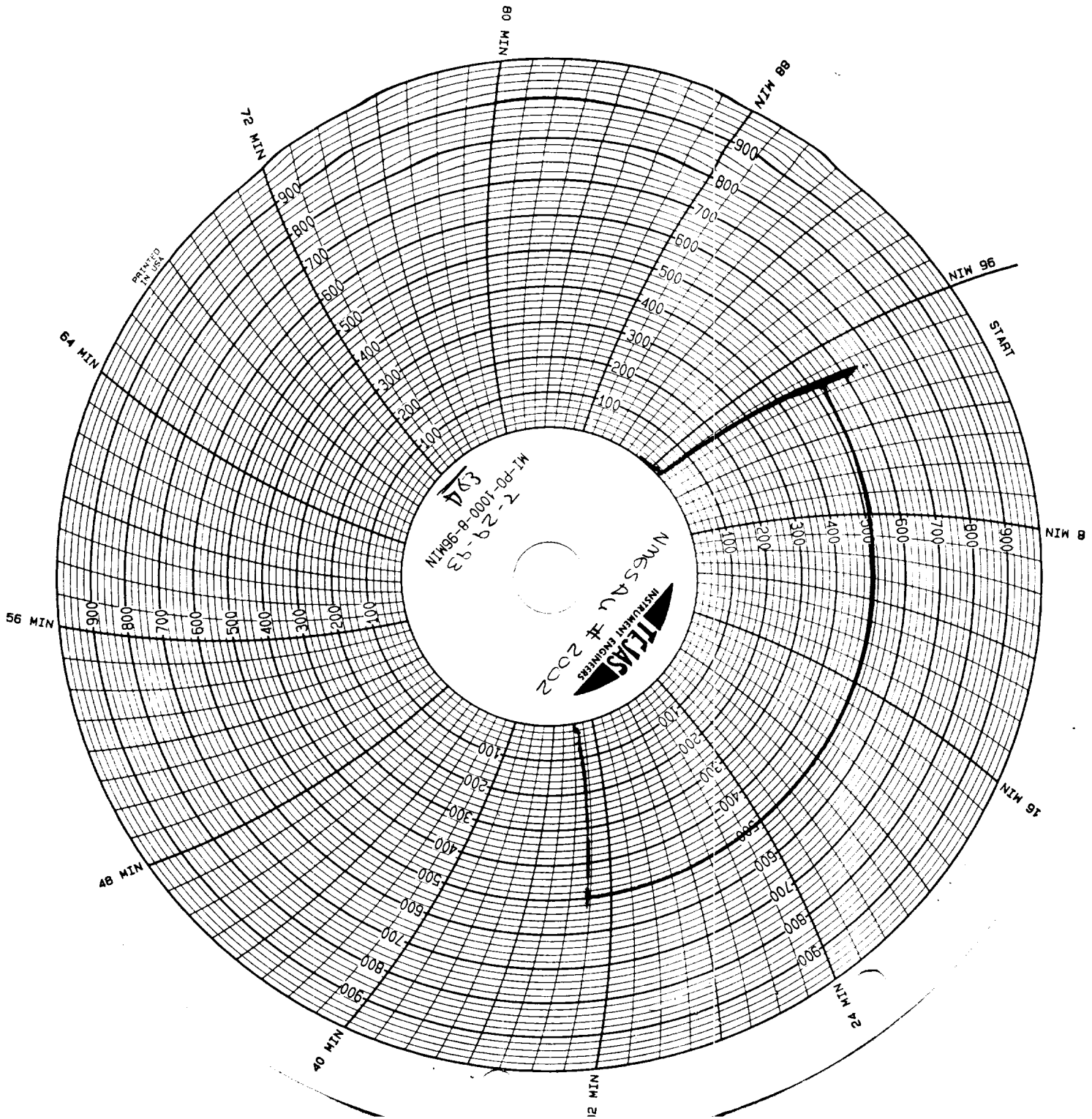
APPROVED BY _____ TITLE _____

CONDITIONS OF APPROVAL, IF ANY:

AUG 10 1993

plug, retrieving tool and SN on 119 jts. 2-7/8" tbg. Set RBP at 3,500' and circulated casing-tubing annulus with 120 bbls. fresh water. Unable to locate surface-production casing annulus riser. Excavated cellar and located annulus valve, installed riser and found 0 psi. Flowed an estimated 2 bbls. water and gas in 30 seconds and flow ceased. Replaced 6" 600 x 10" 600 tubing spool hardware. Pressure tested casing from 0' to 3,500' and pressure decreased from 530 psi to 500 psi in 30 mins. Released RBP and TOH with 119 jts. 2-7/8" tbg., SN, retrieving tool and RBP. TIH with a 2-7/8" SN, 1 jt. 2-7/8" 8rd IPC tubing (TK-99), 2-7/8" 10V x 207/8" 8rd changeover, 109 jts. 2-7/8" 10V tbg., and 12 jts. 2-7/8" 8rd tbg. Dropped SV, pressure tested tbg. to 1,500 psi and retrieved SV. Removed 6" 600 manual BOP and 6" 600 x 24" spool and installed a 6" x 10" spool and a 7-1/16" 2M slip type tubing hanger. Set SN at 3,604'. TIH with a 2-1/2" x 1-1/4" x 10' pump #A-0581, 3/4" back off tool (RH release), 81-3/4" sucker rods, 62-7/8" sucker rods. Loaded tubing with fresh water and found pump would not actuate. TOH with 62-7/8" sucker rods, 81-3/4" sucker rods, 3/4" back off tool and pump. Found pump stuck on upstroke with iron sulfide, Pumped 5 gals. Surfactant followed by 30 bbls. fresh water down tubing. Rigged up swab equipment and made four swab runs from SN. TIH with a 2-1/2" x 1-1/4" x 10' pump #A-0581, 3/4" backoff tool, 81 3/4" sucker rods, 62-7/8" sucker rods, and a 1-1/4" x 16' sprayed metal polished rod. Hot watered down tubing with 60 bbls. fresh water mixed with paraffin solvent. Seated pump, loaded tubing with fresh water and checked pump action. Installed flowline connection. Pumping.

Test (24 Hours): 0 BOPD, 0 BWP, 120 MCFD



PROPERTY OF
COURT HOUSE
OFFICE