

# WELL DATA SHEET

FIELD: Eunice Monument

WELL NAME: G. C. Matthews #4

FORMATION: Grayburg

LOC: 1980' FSL & 660' FEL  
TOWNSHIP: 20-S  
RANGE: 37-E

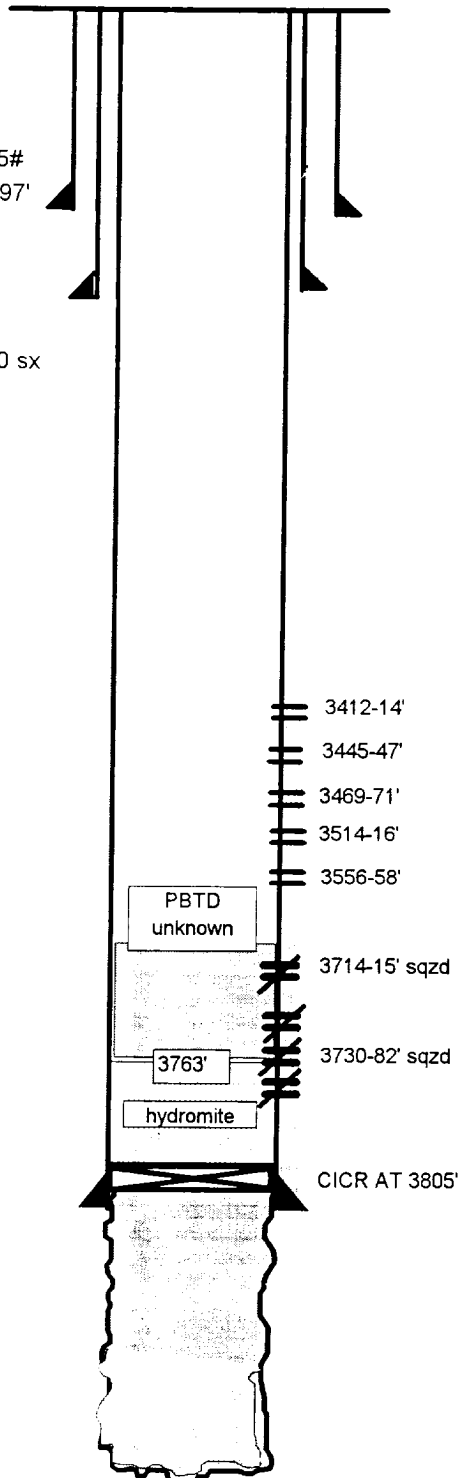
SEC: 6, Unit I  
COUNTY: Lea  
STATE: NM

GL: 3567'  
KB to GL: 6'

CURRENT STATUS: TA'd  
API NO: 30-025-05945  
CHEVNO: FA7067

10 3/4" OD, 32.75#  
Sur. pipe set at 297'  
w/ 200 sxs cmt.

7 5/8", 36# csg  
set at 2342' w 400 sx



Date Completed: 02/2/37  
Initial Production: 715 bopd, 1578 mcf  
Initial Formation: Grayburg  
FROM: 3815' TO: 3897'

## Well History

5/52 PB w/ hydromite to 3858', Install gas lift. IP 65 BO, 29 BW

3/57 Ran CICR set at 3805 Scz OH w/ 213 sx. Perf 3730-82' w 4 JSPF. Acdz w/ 250 gal. Well flowed. PB to 3763' with Hydromite & Calseal. Treat 3730-63' w/ 7473 gal lease crude w/ 1 ppg sd. PB to 3720' w/ hydromite. Perf 3714-15' w/ 8 JSPF. Set CICR at 3690'. DO to 3720'. Csg would not test. Set CICR at 3685'. Pump 500 gal Cealment. DO cmt to 3720'. test perfs at 3715 to 500 psi, ok. DO hydromite and sand to 3763'. Swab well, kicked off. [Assume that perfs 3730-63' open because of being covered w/ sand and hydromite was used as a cap on the sand.]

5/58 Sqz perfs 3730-63 w/ 87 sx cmt. TA'd

4/60 P&A w/ Aquagel mud. Spot 10 sx cmt at top of 5 1/2" csg. Set marker.

7/69 Re-enter. CO to 3675'. Spot 15% Acid. Perf 3412-14', 3445-47', 3469-71', 3514-16', 3556-58', w/ 2 JSPF. Acdz w/ 3000 gal 15% ND Acid. IP 1 BO ? Gas

8/79 Note in file that well has been TA'd. Not details given.

## FORMATION TOPS:

Rustler	1080
T/ Salt	1120
B/ Salt	2270
Yates	2380
Queen	3036
Grayburg	3680