

N MEXICO OIL CONSERVATION COMMISSION
WELL LOCATION AND ACREAGE DEDICATION PLAT

Form C-102
Supersedes C-128
Effective 1-1-65

All distances must be from the outer boundaries of the Section.

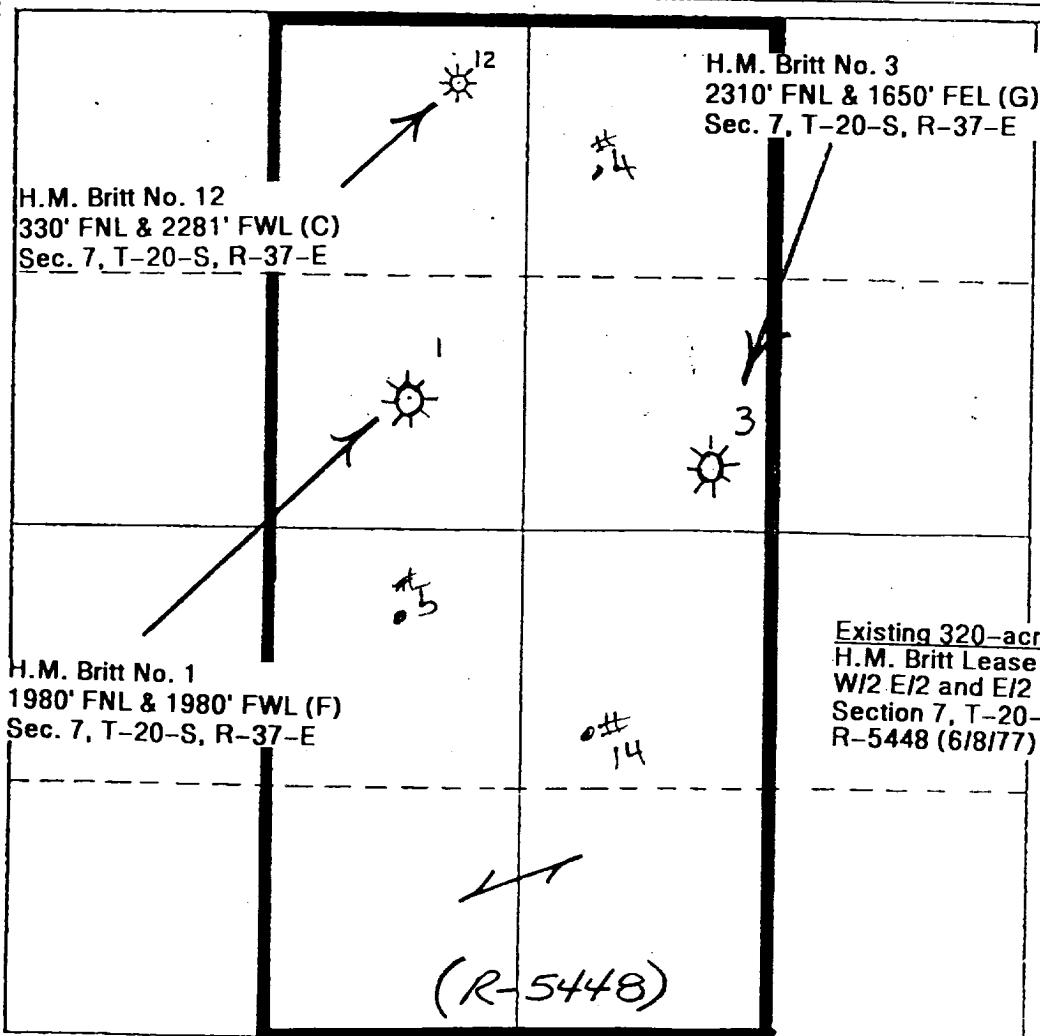
Operator UNION TEXAS PETROLEUM CORPORATION			Lease Britt		Well No. 12
Unit Letter C	Section 7	Township T-20-S	Range R-37-E	County Lea	
Actual Footage Location of Well: 330 feet from the North line and 2281 feet from the West line					
Ground Level Elev. 3552	Producing Formation Queen		Pool Eumont Gas Pool		Dedicated Acreage: 320 Acres

1. Outline the acreage dedicated to the subject well by colored pencil or hachure marks on the plat below.
2. If more than one lease is dedicated to the well, outline each and identify the ownership thereof (both as to working interest and royalty).
3. If more than one lease of different ownership is dedicated to the well, have the interests of all owners been consolidated by communitization, unitization, force-pooling, etc?

☐ Yes ☐ No If answer is "yes," type of consolidation _____

If answer is "no," list the owners and tract descriptions which have actually been consolidated. (Use reverse side of this form if necessary.) _____

No allowable will be assigned to the well until all interests have been consolidated (by communitization, unitization, forced-pooling, or otherwise) or until a non-standard unit, eliminating such interests, has been approved by the Commission.



CERTIFICATION

I hereby certify that the information contained herein is true and complete to the best of my knowledge and belief.

Stanley A. Post
Name

Stanley A. Post

Position

Senior Production Analyst

Company

UNION TEXAS PETROLEUM CORP

Date

April 13, 1977

I hereby certify that the well location
Existing 320-acre Eumont P.U. plat was plotted from field
H.M. Britt Lease
W/2 E/2 and E/2 W/2
Section 7, T-20-S, R-37-E
R-5448 (6/8/77)
of surveys made by me or
revision, and that the same
correct to the best of my
knowledge and belief.

Date Surveyed

Registered Professional Engineer
and/or Land Surveyor

Certificate No.

