

## DISTRICT I

P.O. Box 1980, Hobbs, NM 88241-1980

## DISTRICT II

P.O. Box Drawer DD, Artesia, NM 88211-0719

## DISTRICT III

1000 Rio Brazos Rd., Aztec, NM 87410

## DISTRICT IV

P.O. Box 2088, Santa Fe, NM 87504-2088

## State of New Mexico

Energy, Minerals and Natural Resources Department

Form C-101

Revised February 10, 1994

Instructions on back

Submit to Appropriate District Office

State Lease - 6 Copies

Fee Lease - 5 Copies

## OIL CONSERVATION DIVISION

P.O. Box 2088

Santa Fe, New Mexico 87504-2088

☐ AMENDED REPORT

## APPLICATION FOR PERMIT TO DRILL, RE-ENTER, DEEPEN, PLUGBACK, OR ADD A ZONE

<sup>1</sup> Operator Name and Address TEXACO EXPLORATION & PRODUCTION INC. P.O. BOX 730, HOBBS, NM 88240		<sup>2</sup> OGRID Number 022351
		<sup>3</sup> API Number 30-025-06031
<sup>4</sup> Property Code 010885	<sup>5</sup> Property Name T ANDERSON	<sup>6</sup> Well No. 3

<sup>7</sup> Surface Location

UI or lot no.	Section	Township	Range	Lot.Idn	Feet From The	North/South Line	Feet From The	East/West Line	County
J	8	20S	37E		2173	SOUTH	2173	EAST	LEA

<sup>8</sup> Proposed Bottom Hole Location If Different From Surface

UI or lot no.	Section	Township	Range	Lot.Idn	Feet From The	North/South Line	Feet From The	East/West Line	County
<sup>9</sup> Proposed Pool 1 MONUMENT PADDOCK					<sup>10</sup> Proposed Pool 2				

<sup>11</sup> Work Type Code P	<sup>12</sup> WellType Code O	<sup>13</sup> Rotary or C.T. R	<sup>14</sup> Lease Type Code S	<sup>15</sup> Ground Level Elevation 3546'
<sup>16</sup> Multiple No	<sup>17</sup> Proposed Depth 5178'	<sup>18</sup> Formation MONUMENT PADDOCK	<sup>19</sup> Contractor PRIDE	<sup>20</sup> Spud Date

<sup>21</sup> Proposed Casing and Cement Program

SIZE OF HOLE	SIZE OF CASING	WEIGHT PER FOOT	SETTING DEPTH	SACKS OF CEMENT	EST. TOP
17.25" O.D.	13.375" O.D.	36.00	613'	800	CIRC
12.25" O.D.	8.625" O.D.	32, 36, 34	2899'	1200	CIRC
8.75" O.D.	7" O.D.	23	5252'	500	3160' BY TS
6.25" O.D.	4.5" O.D.	11.60	5743'	100	5029' TOL

<sup>22</sup> Describe the proposed program. If this application is to DEEPEN or PLUG BACK give the data on the present productive zone and proposed new productive zone. Describe the blowout prevention program, if any. Use additional sheets if necessary.

1. MIRU pulling unit. TOH w/rods and pump. NU 3000# manual double ram BOP. Release tbg anchor, TOH w/2-3/8" production tbg.
2. TIH w/4-1/2" CIBP on tbg. Set CIBP above Monument Blinbry perfs @ +/- 5575'. Load hole w/2% KCL water (approx. 210 bbls). Test CIBP, liner and csg by closing pipe rams and pressuring to 500# surface pressure. TOH w/tbg.
3. MIRU wireline w/packoff. TIH w/3-1/8" casing gun and perforate the Monument Paddock w/2 JSPF w/120 degree spiral at 5170' - 5178'.
4. TIH w/4-1/2" treating packer and SN on 2-3/8" tbg. Hydrotest tbg into hole to 4000#. TIH w/bottom of packer to 5178' (lower most perf). RU DS. Spot 75 gallons 15% NEFE HCL across perforated interval. Place 500# on backside and monitor throughout job.
5. Acidize Monument Paddock perfs 5170'-5178' w/1500 gallons 15% NEFE carrying 24 7/8" 1.3 s.g. ball sealers. Rate of 3-4 BPM w/maximum = 3000#. RD DS.
6. Flow/swab back load. Release packer and run through perforated interval to knock off any ball sealers. TOH w/tbg and packer.
7. TIH w/production equipment and place on test. If production rates are low, obtain DHC permit to commingle Monument Paddock and Blinbry.

<sup>23</sup> I hereby certify that the rules and regulations of the Oil Conservation Division have been complied with and that the information given above is true and complete to the best of my knowledge and belief.

Signature *Paul R. Wilcox*

Printed Name Paul R. Wilcox

Title Field Technician

Date 4/16/96

Telephone 397-0442

## OIL CONSERVATION DIVISION

ORIGINAL SIGNED BY

Approved By:

GARY WINK  
FIELD REP. II

Title:

Approval Date:

APR 16 1996

Expiration Date:

Conditions of Approval:

Attached ☐Permit Expires 1 Year From Approval  
Date Unless Being Underway  
Plugback

2011 21 93A

APR 1996  
Received  
Hobbs  
OCD

**DISTRICT I**

P.O. Box 1980, Hobbs, NM 88241-1980

**DISTRICT II**

P.O. Box Drawer DD, Artesia, NM 88211-0719

**DISTRICT III**

1000 Rio Brazos Rd., Aztec, NM 87410

**DISTRICT IV**

P.O. Box 2088, Santa Fe, NM 87504-2088

State of New Mexico  
Energy, Minerals and Natural Resources Department**OIL CONSERVATION DIVISION**P.O. Box 2088  
Santa Fe, New Mexico 87504-2088

Form C-102

Revised February 10, 1994

Instructions on back

Submit to Appropriate District Office

State Lease - 4 Copies

Fee Lease - 3 Copies

☐ AMENDED REPORT**WELL LOCATION AND ACREAGE DEDICATION PLAT**

<sup>1</sup> API Number 30-025-06031	<sup>2</sup> Pool Code 47080	<sup>3</sup> Pool Name MONUMENT PADDOCK
<sup>4</sup> Property Code 010885	<sup>5</sup> Property Name T ANDERSON	<sup>6</sup> Well No. 3
<sup>7</sup> OGRID Number 022351	<sup>8</sup> Operator Name TEXACO EXPLORATION & PRODUCTION INC.	<sup>9</sup> Elevation 3546' GL

<sup>10</sup> Surface Location

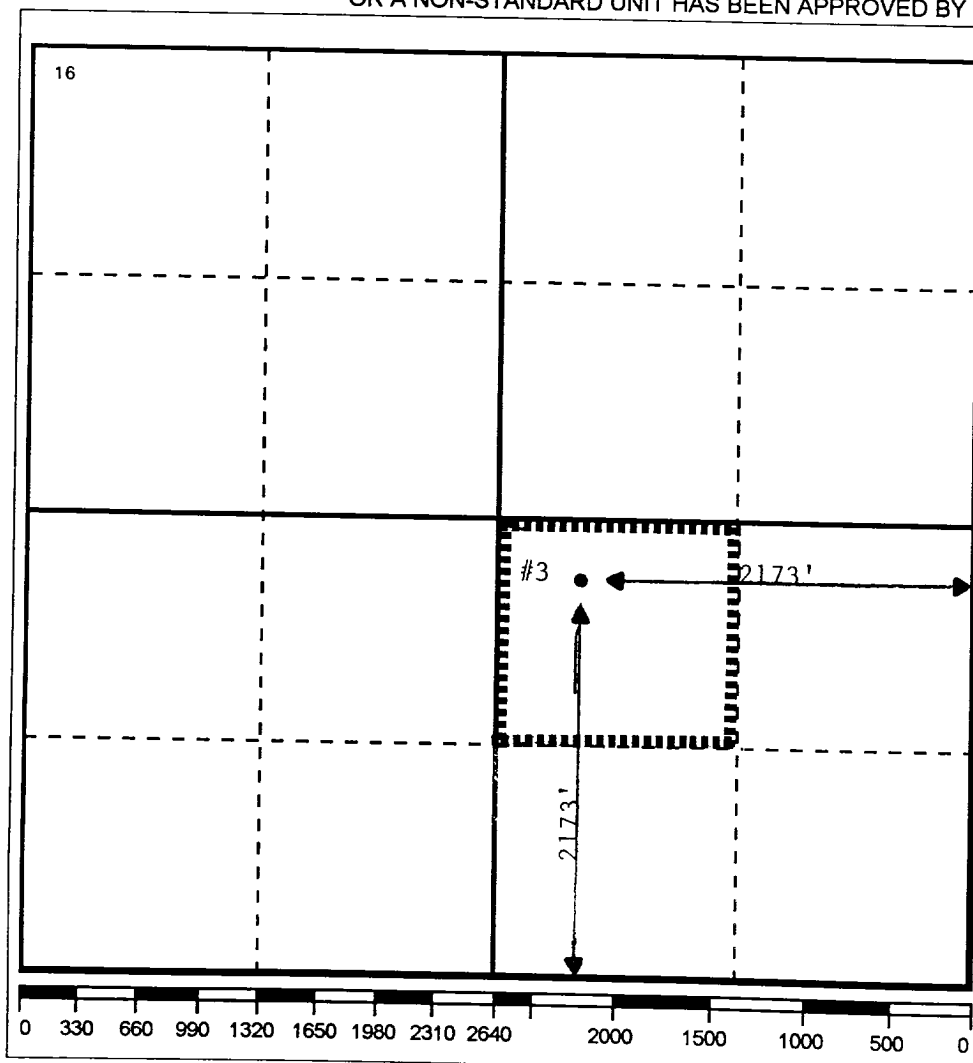
UI or lot no.	Section	Township	Range	Lot.Idn	Feet From The	North/South Line	Feet From The	East/West Line	County
J	8	20S	37E		2173	SOUTH	2173	EAST	LEA

<sup>11</sup> Bottom Hole Location If Different From Surface

UI or lot no.	Section	Township	Range	Lot.Idn	Feet From The	North/South Line	Feet From The	East/West Line	County
---------------	---------	----------	-------	---------	---------------	------------------	---------------	----------------	--------

<sup>12</sup> Dedicated Acres 40	<sup>13</sup> Joint or Infill No	<sup>14</sup> Consolidation Code	<sup>15</sup> Order No.
-------------------------------------	-------------------------------------	----------------------------------	-------------------------

NO ALLOWABLE WILL BE ASSIGNED TO THIS COMPLETION UNTIL ALL INTERESTS HAVE BEEN CONSOLIDATED  
OR A NON-STANDARD UNIT HAS BEEN APPROVED BY THE DIVISION

**17 OPERATOR CERTIFICATION**

I hereby certify that the information contained herein is true and complete to the best of my knowledge and belief

Signature

*Paul R. Wilcox*

Printed Name

Paul R. Wilcox

Position

Field Technician

Date

4/16/96

**18 SURVEYOR CERTIFICATION**

I hereby certify that the well location shown on this plat was plotted from field notes of actual surveys made by me or under my supervision, and that the same is true and correct to the best of my knowledge and belief.

Date Surveyed

Signature & Seal of  
Professional Surveyor

Certificate No.