

DISTRICT I

P.O. Box 1980, Hobbs, NM 88241-1980

DISTRICT II

P.O. Box Drawer DD, Artesia, NM 88211-0719

DISTRICT III

1000 Rio Brazos Rd., Aztec, NM 87410

DISTRICT IV

P.O. Box 2088, Santa Fe, NM 87504-2088

State of New Mexico
Energy, Minerals and Natural Resources Department

OIL CONSERVATION DIVISION

P.O. Box 2088
Santa Fe, New Mexico 87504-2088

Form C-102

Revised February 10, 1994

Instructions on back
Submit to Appropriate District Office

State Lease - 4 Copies

Fee Lease - 3 Copies

☐ AMENDED REPORT

WELL LOCATION AND ACREAGE DEDICATION PLAT

¹ API Number 30 025 06045	² Pool Code 76480	³ Pool Name Eumont Yates 7R QN (Pro Gas)
⁴ Property Code 11127	⁵ Property Name Van Etten, L.	⁶ Well No. 5
⁷ OGRID Number 022351	⁸ Operator Name TEXACO EXPLORATION & PRODUCTION INC.	⁹ Elevation 3553'

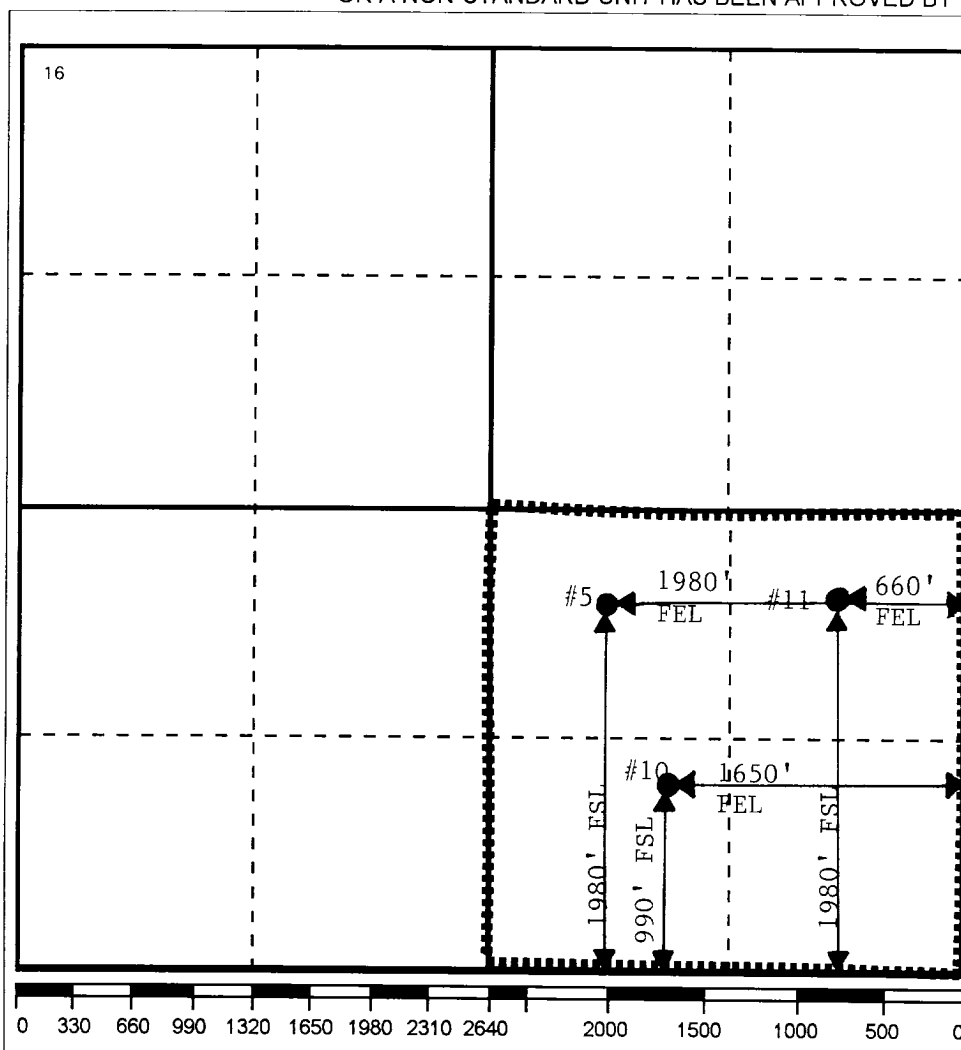
¹⁰ Surface Location

Ul or lot no. J	Section 9	Township 20S	Range 37E	Lot.Idn	Feet From The 1980	North/South Line SOUTH	Feet From The 1980	East/West Line EAST	County LEA
--------------------	--------------	-----------------	--------------	---------	-----------------------	---------------------------	-----------------------	------------------------	---------------

¹¹ Bottom Hole Location If Different From Surface

Ul or lot no.	Section	Township	Range	Lot.Idn	Feet From The	North/South Line	Feet From The	East/West Line	County
¹² Dedicated Acres 160	¹³ Joint or Infill No	¹⁴ Consolidation Code	¹⁵ Order No.						

NO ALLOWABLE WILL BE ASSIGNED TO THIS COMPLETION UNTIL ALL INTERESTS HAVE BEEN CONSOLIDATED
OR A NON-STANDARD UNIT HAS BEEN APPROVED BY THE DIVISION



17 OPERATOR CERTIFICATION

I hereby certify that the information
contained herein is true and complete to the
best of my knowledge and belief

Signature

Printed Name

V Greg Maes

Position

Engineering Assistant

Date

3/2/97

18 SURVEYOR CERTIFICATION

I hereby certify that the well location shown
on this plat was plotted from field notes of
actual surveys made by me or under my
supervision, and that the same is true and
correct to the best of my knowledge and
belief.

Date Surveyed

Signature & Seal of
Professional Surveyor

Certificate No.