

DISTRICT I
P. Box 1900, Hobbs, NM 88241-1900
DISTRICT II
P.O. Box Drawer DD, Artesia, NM 88211-0719
DISTRICT III
1000 Rio Brazos Rd., Aztec, NM 87410
DISTRICT IV
P.O. Box 2088, Santa Fe, NM 87504-2088

State of New Mexico
Energy, Minerals and Natural Resources Department

OIL CONSERVATION DIVISION

P.O. Box 2088
Santa Fe, New Mexico 87504-2088

Form C-102
Revised February 10, 1994
Instructions on back
Submit to Appropriate District Office
State Lease - 4 Copies
Fee Lease - 3 Copies
☐ AMENDED REPORT

WELL LOCATION AND ACREAGE DEDICATION PLAT

¹ API Number 30 025 06045		² Pool Code 76480		³ Pool Name Eurnont Yates 7R QN (Pro Gas)	
⁴ Property Code 11127		⁵ Property Name Van Etten, L.			⁶ Well No. 5
⁷ OGRID Number 022351		⁸ Operator Name TEXACO EXPLORATION & PRODUCTION INC.			⁹ Elevation 3553'

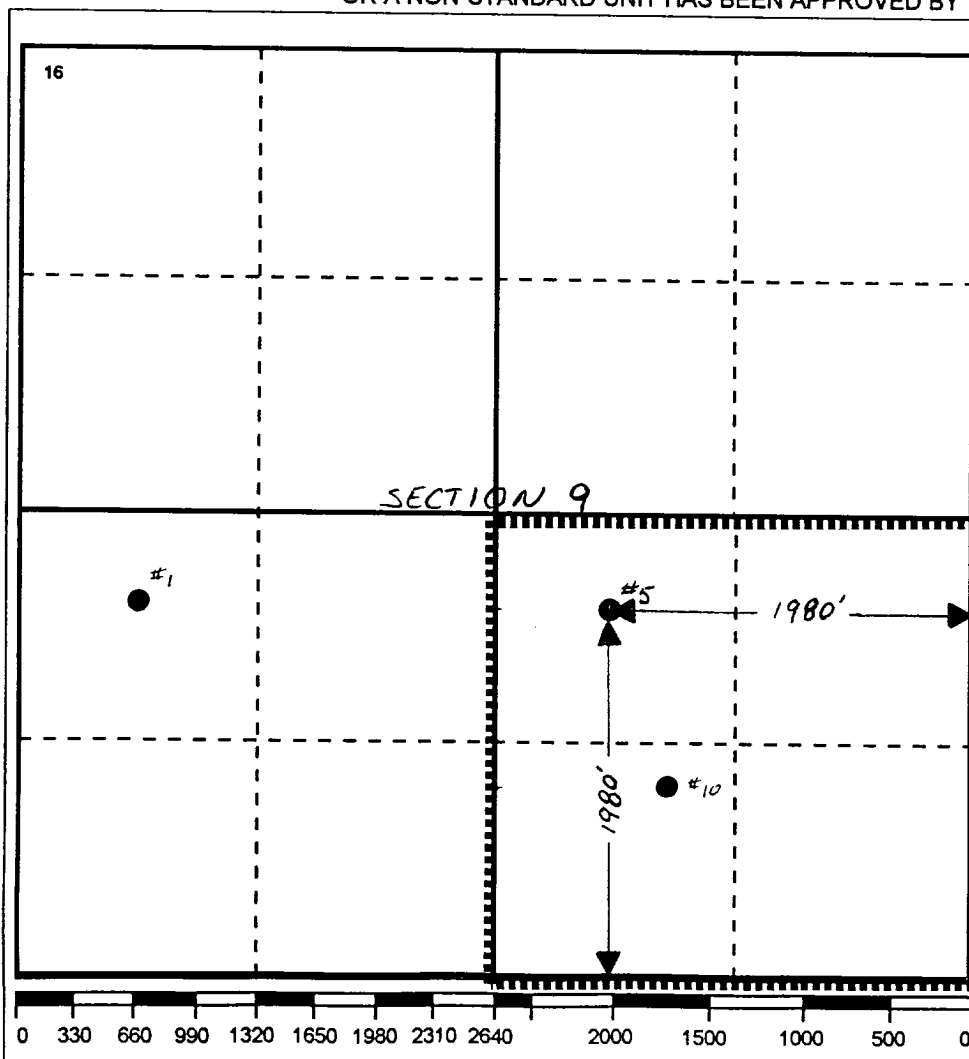
¹⁰ Surface Location

UI or lot no. J	Section 9	Township 20S	Range 37E	Lot.Idn	Feet From The 1980	North/South Line SOUTH	Feet From The 1980	East/West Line EAST	County LEA
--------------------	--------------	-----------------	--------------	---------	-----------------------	---------------------------	-----------------------	------------------------	---------------

¹¹ Bottom Hole Location If Different From Surface

UI or lot no.	Section	Township	Range	Lot.Idn	Feet From The	North/South Line	Feet From The	East/West Line	County
¹² Dedicated Acres 160	¹³ Joint or Infill No	¹⁴ Consolidation Code		¹⁵ Order No.					

NO ALLOWABLE WILL BE ASSIGNED TO THIS COMPLETION UNTIL ALL INTERESTS HAVE BEEN CONSOLIDATED
OR A NON-STANDARD UNIT HAS BEEN APPROVED BY THE DIVISION



17 OPERATOR CERTIFICATION I hereby certify that the information contained herein is true and complete to the best of my knowledge and belief Signature Printed Name Darrell J. Carriger Position Engineering Assistant Date 6/5/95
18 SURVEYOR CERTIFICATION I hereby certify that the well location shown on this plat was plotted from field notes of actual surveys made by me or under my supervision, and that the same is true and correct to the best of my knowledge and belief. Date Surveyed Signature & Seal of Professional Surveyor Certificate No.