

DISTRICT I  
P.O. Box 1980, Hobbs, NM 88240DISTRICT II  
P.O. Drawer DD, Artesia, NM 88210DISTRICT III  
1000 Rio Brazos Rd., Aztec, NM 87410

## OIL CONSERVATION DIVISION

P.O. Box 2088  
Santa Fe, New Mexico 87504-2088

WELL API NO.

30-025-09882

5. Indicate Type of Lease

STATE ☒FEE ☐

6. State Oil &amp; Gas Lease No.

B-1167-18

SUNDRY NOTICES AND REPORTS ON WELLS  
(DO NOT USE THIS FORM FOR PROPOSALS TO DRILL OR TO DEEPEN OR PLUG BACK TO A  
DIFFERENT RESERVOIR. USE "APPLICATION FOR PERMIT"  
(FORM C-101) FOR SUCH PROPOSALS.)

1. Type of Well:

OIL  
WELL ☒GAS  
WELL ☐

OTHER

2. Name of Operator

AMERADA HESS CORPORATION

3. Address of Operator

POST OFFICE DRAWER D, MONUMENT, NEW MEXICO 88265

4. Well Location

Unit Letter J : 1980 Feet From The SOUTH Line and 1980 Feet From The EAST LineSection 19Township 19SRange 37E

NMPM

LEA

County

10. Elevation (Show whether DF, RKB, RT, GR, etc.)

11.

Check Appropriate Box to Indicate Nature of Notice, Report, or Other Data  
NOTICE OF INTENTION TO:PERFORM REMEDIAL WORK ☐PLUG AND ABANDON ☐TEMPORARILY ABANDON ☐CHANGE PLANS ☐PULL OR ALTER CASING ☐OTHER: ☐

SUBSEQUENT REPORT OF:

REMEDIAL WORK ☐ALTERING CASING ☐COMMENCE DRILLING OPNS. ☐PLUG AND ABANDONMENT ☐CASING TEST AND CEMENT JOB ☐OTHER: Cement Squeeze & return to prod. ☒

12. Describe Proposed or Completed Operations (Clearly state all pertinent details, and give pertinent dates, including estimated date of starting any proposed work) SEE RULE 1103.

NMGSAU #510 (02-21-95 Thru 03-15-95)

MIRU X-Pert Well Service. Milled out tight spot at 2,520'-2,521'. TIH w/7" fullbore packer and isolated 7" casing leak from 1,906' to 1,962'. TOH w/packer and RBP. Schlumberger ran CBL/GR/CCL/ from 2,600' to surface. TIH w/tubing OE to 1,960' and spot 50 sacks Premium Plus cement w/5% CFR-3. TIH w/packer and squeezed 6.3 sacks into leak. Rotary Wireline Service shot 2 holes at 1,275'. TIH w/7" cement retainer and set at 1,182'. Circ. a total of 242 sacks Premium Plus cement to surface of 9-5/8" casing. Removed BOP and speared 7" casing. Pulled 140,000# and cut 9-5/8" and 7" casing strings. Removed wellhead and replaced w/new National Wellhead. Installed 6" 900 BOP. TIH w/6-1/8" bit & drilled cement from 1,181' to 1,182' and cement retainer from 1,182' to 1,184' and cement from 1,184' to 1,972'. Test casing. OK. Drill cement from 3,619' to 3,743'. Test casing. OK. TOH w/bit. Ran retrieving (Continued-On Back)

I hereby certify that the information above is true and complete to the best of my knowledge and belief.

SIGNATURE Terry L. Harvey TITLE Sr. Staff Assistant DATE 03-28-95TYPE OR PRINT NAME Terry Harvey TELEPHONE NO. 393-2144

(This space for State Use)

ORIGINAL SIGNED BY JERRY SEXTON  
DISTRICT I SUPERVISOR

APPROVED BY \_\_\_\_\_ TITLE \_\_\_\_\_ DATE \_\_\_\_\_

CONDITIONS OF APPROVAL, IF ANY:

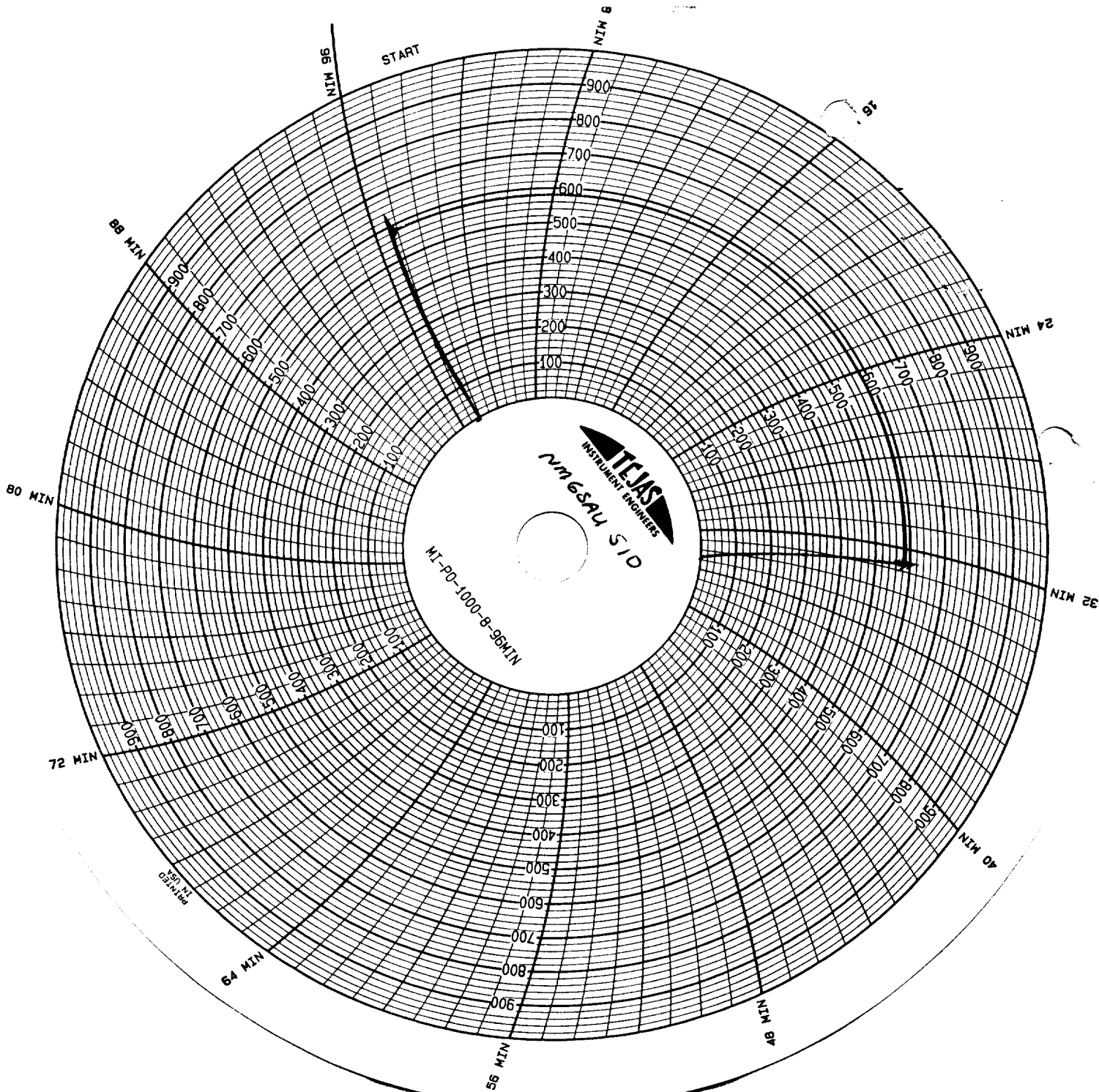
MAY 01 1995

MCP

NMGSAU #510 (02-21-95 Thru 03-15-95)  
Continued

tool and TOH w/7" RBP. TIH w/6-1/8" bit and bulldog bailer and drill out PB to 4,033'. Pumped oyster shells and 200 bbls. Guar gum Polymer gelled fluid. TIH w/tubing OE to 3,988' and pumped 50 sacks Class "H" cement w/Calseal and KCL. TIH w/bit. Tag top of plug at 3,899' and drill out OH to 3,940'. Knox Services pumped 5,000 gals. NEFE 15% acid across entire O.H. Swab back load w/50% oil cut. TIH w/production tubing. TIH w/1-3/4" sucker rod pump and sucker rods. Rigged down pulling unit and cleaned location.

Test of 03-27-95: Prod. 99 bo, 49 bw, and 52 MCFGPD in 24 hours.



**RECEIVED**  
APR 20 1981  
JUDICIAL  
OFFICE