

UNITED STATES  
DEPARTMENT OF THE INTERIOR  
GEOLOGICAL SURVEY

## APPLICATION FOR PERMIT TO DRILL, DEEPEN, OR PLUG BACK

## 1a. TYPE OF WORK

DRILL ☒DEEPEN ☐PLUG BACK ☐

## b. TYPE OF WELL

OIL  
WELL ☒GAS  
WELL ☐OTHER ☐SINGLE  
ZONE ☒MULTIPLE  
ZONE ☐

## 2. NAME OF OPERATOR

Sinclair Oil &amp; Gas Company

## 3. ADDRESS OF OPERATOR

P. O. Box 1470, Midland, Texas

## 4. LOCATION OF WELL (Report location clearly and in accordance with any State requirements.)\*

At surface 1650' fr South line &amp; 990' fr West line

At proposed prod. zone

## 14. DISTANCE IN MILES AND DIRECTION FROM NEAREST TOWN OR POST OFFICE\*

## 15. DISTANCE FROM PROPOSED\*

LOCATION TO NEAREST  
PROPERTY OR LEASE LINE, FT.  
(Also to nearest drig. line, if any)18. DISTANCE FROM PROPOSED LOCATION\*  
TO NEAREST WELL, DRILLING, COMPLETED,  
OR APPLIED FOR, ON THIS LEASE, FT.

## 16. NO. OF ACRES IN LEASE

520

17. NO. OF ACRES ASSIGNED  
TO THIS WELL

40

## 19. PROPOSED DEPTH

3800'

## 20. ROTARY OR CABLE TOOLS

Cable Tools

## 21. ELEVATIONS (Show whether DF, RT, GR, etc.)

## 22. APPROX. DATE WORK WILL START\*

Upon approval

## 23. PROPOSED CASING AND CEMENTING PROGRAM

SIZE OF HOLE	SIZE OF CASING	WEIGHT PER FOOT	SETTING DEPTH	QUANTITY OF CEMENT
10 $\frac{1}{4}$ "	8 5/8" OD	36#	1550'	525 (circulated)
8 $\frac{1}{4}$ "	7" OD	17# & 20#	3500'	175 (circulated) Liner
6 $\frac{1}{4}$ "	4 $\frac{1}{2}$ " OD	9.5#	3500' - TD	75 Liner

Propose to test the Yates-Seven Rivers Sand 3525' to total depth. Propose to set 1550' of 8 5/8" OD and cement with approximately 525 sx cement (circulate), run 7" liner to 3500' and circulate cement, and run 4 $\frac{1}{2}$ " OD liner to total depth.

NOTIFY USGS IN SUFFICIENT TIME TO  
WITNESS CEMENTING OF all CASING.

IN ABOVE SPACE DESCRIBE PROPOSED PROGRAM: If proposal is to deepen or plug back, give data on present productive zone and proposed new productive zone. If proposal is to drill or deepen directionally, give pertinent data on subsurface locations and measured and true vertical depths. Give blowout preventer program, if any.

24.

SIGNED

TITLE Chief Clerk, Prod. Dept.

DATE March 10, 1965

(This space for Federal or State office use)

PERMIT NO.

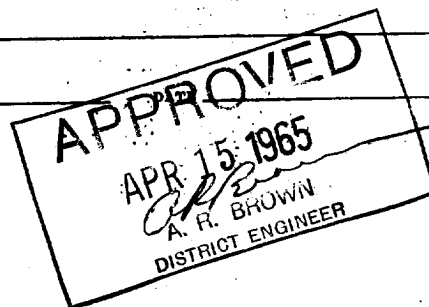
APPROVAL DATE

APPROVED BY

TITLE

CONDITIONS OF APPROVAL, IF ANY:

\*See Instructions On Reverse Side



**NEW MEXICO OIL CONSERVATION COMMISSION  
WELL LOCATION AND ACREAGE DEDICATION PLAT**

Form C-102  
Supersedes C-128  
Effective 1-1-65

All distances must be from the outer boundaries of the Section.

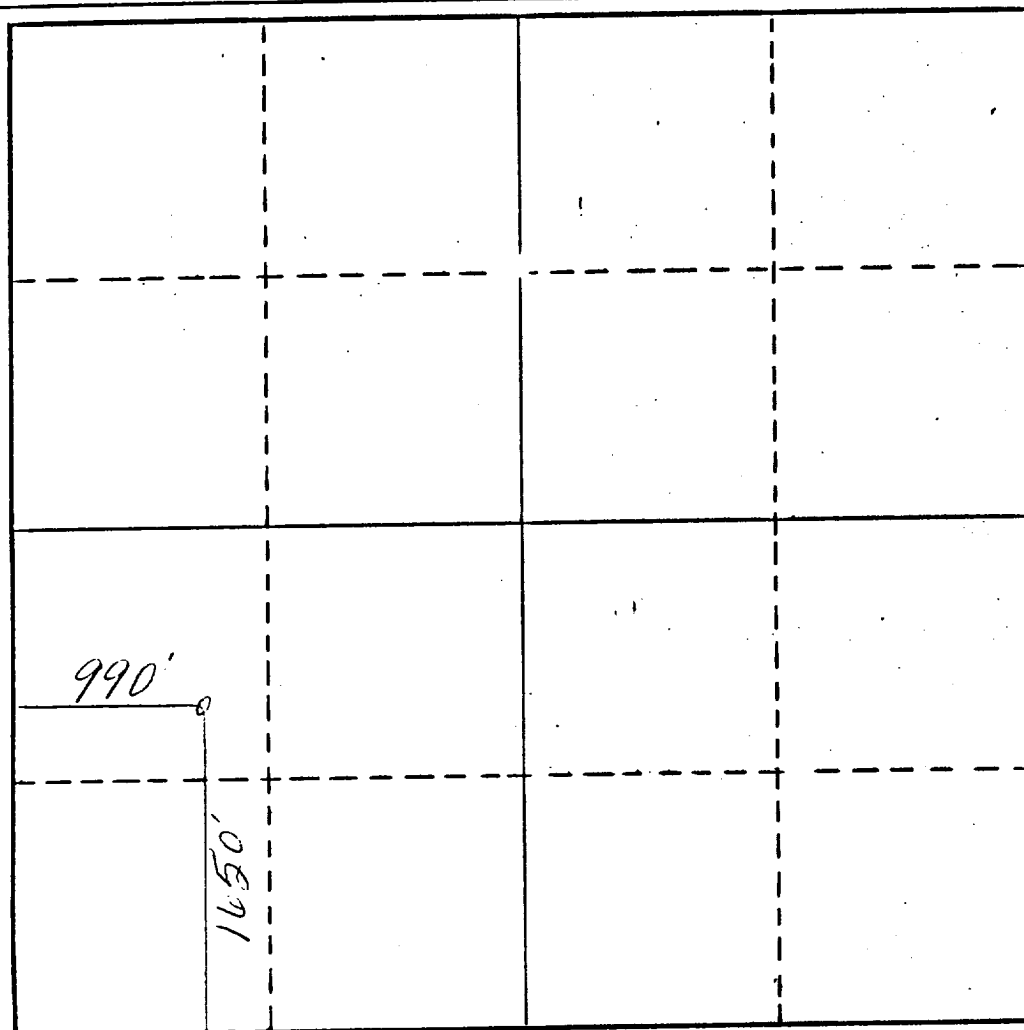
Operator <b>Sinclair Oil &amp; Gas Company</b>			Lease <b>Federal-Ballard DE</b>		Well No. <b>6</b>
Unit Letter <b>L</b>	Section <b>22</b>	Township <b>20 South</b>	Range <b>34 East</b>	County <b>Lea</b>	
Actual Footage Location of Well: <b>1650</b> feet from the <b>South</b> line and <b>990</b> feet from the <b>West</b> line					
Ground Level Elev:	Producing Formation <b>Yates - Seven Rivers Sd.</b>		Pool <b>Lynch</b>		Dedicated Acreage: <b>40</b> Acres

1. Outline the acreage dedicated to the subject well by colored pencil or hachure marks on the plat below.
2. If more than one lease is dedicated to the well, outline each and identify the ownership thereof (both as to working interest and royalty).
3. If more than one lease of different ownership is dedicated to the well, have the interests of all owners been consolidated by communitization, unitization, force-pooling, etc?

☐ Yes    ☐ No    If answer is "yes," type of consolidation \_\_\_\_\_

If answer is "no," list the owners and tract descriptions which have actually been consolidated. (Use reverse side of this form if necessary.) \_\_\_\_\_

No allowable will be assigned to the well until all interests have been consolidated (by communitization, unitization, forced-pooling, or otherwise) or until a non-standard unit, eliminating such interests, has been approved by the Commission.



**CERTIFICATION**

I hereby certify that the information contained herein is true and complete to the best of my knowledge and belief.

Name \_\_\_\_\_  
 Position \_\_\_\_\_  
 Div. Clerk Prod. Dept.  
 Company  
**Sinclair Oil & Gas Company**  
 Date  
**January 29, 1965**

*WJH*

I hereby certify that the well location shown on this plat was plotted from field notes of actual surveys made by me or under my supervision, and that the same is true and correct to the best of my knowledge and belief.

Date Surveyed  
**3-17-65**  
 Registered Professional Engineer  
 and/or Land Surveyor  
*[Signature]*  
 Certificate No.  
**676**

