

NEW MEXICO OIL CONSERVATION COMMISSION
WELL LOCATION AND ACREAGE DEDICATION PLAT
HOBBS OFFICE O. C. C.

Form C-102
 Supersedes C-128
 Effective 1-1-65

All distances must be from the outer boundaries of the Section.

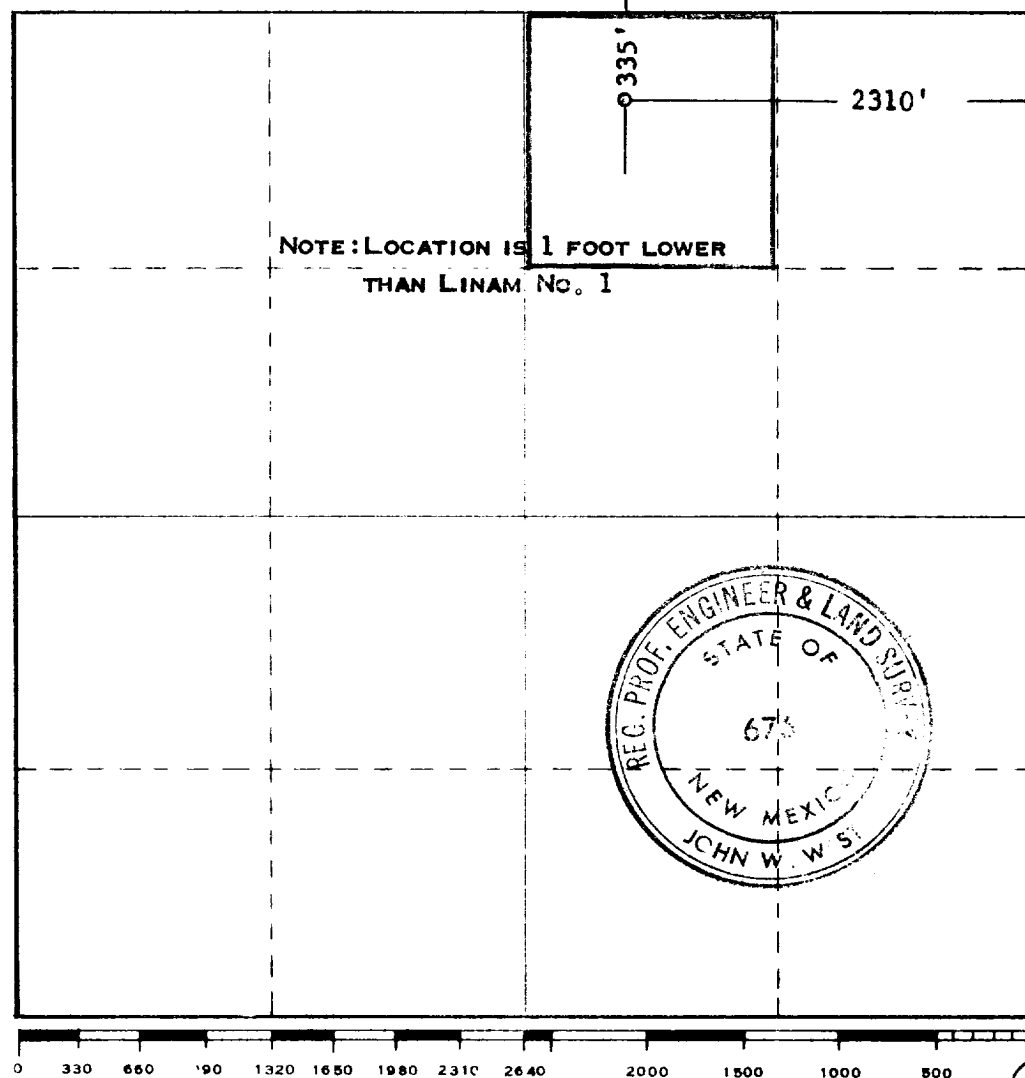
Operator C. W. TRAINER			Lease APR 29 11 05 AM '66 LINAM		Well No. 2
Unit Letter L	Section 3	Township 20 SOUTH	Range 30 EAST	County LEA	
Actual Footage Location of Well: 00 feet from the NORTH line and 2310 feet from the EAST line					
Ground Level Elev. 3682	Producing Formation Queen	Pool Pearl Queen		Dedicated Acreage: 40 40 66 Acres	

1. Outline the acreage dedicated to the subject well by colored pencil or hachure marks on the plat below.
2. If more than one lease is dedicated to the well, outline each and identify the ownership thereof (both as to working interest and royalty).
3. If more than one lease of different ownership is dedicated to the well, have the interests of all owners been consolidated by communitization, unitization, force-pooling, etc?

☐ Yes ☐ No If answer is "yes," type of consolidation _____

If answer is "no," list the owners and tract descriptions which have actually been consolidated. (Use reverse side of this form if necessary.) _____

No allowable will be assigned to the well until all interests have been consolidated (by communitization, unitization, forced-pooling, or otherwise) or until a non-standard unit, eliminating such interests, has been approved by the Commission.



CERTIFICATION

I hereby certify that the information contained herein is true and complete to the best of my knowledge and belief.

Name

C. W. Trainer

Position **C. W. Trainer**
President

Company

TRAINER CORPORATION

Date

April 28, 1966

I hereby certify that the well location shown on this plat was plotted from field notes of actual surveys made by me or under my supervision, and that the same is true and correct to the best of my knowledge and belief.

Date Surveyed

APRIL 20, 1966

Registered Professional Engineer and/or Land Surveyor

John W. West

Certificate No.

NM PE & LS No. 676