

RECEIVED BY

DEC -3 1985

NEW MEXICO OIL CONSERVATION COMMISSION
WELL LOCATION AND ACREAGE DEDICATION PLATForm C-102
Supersedes C-128
Effective 1-1-65

All distances must be from the outer boundaries of the Section

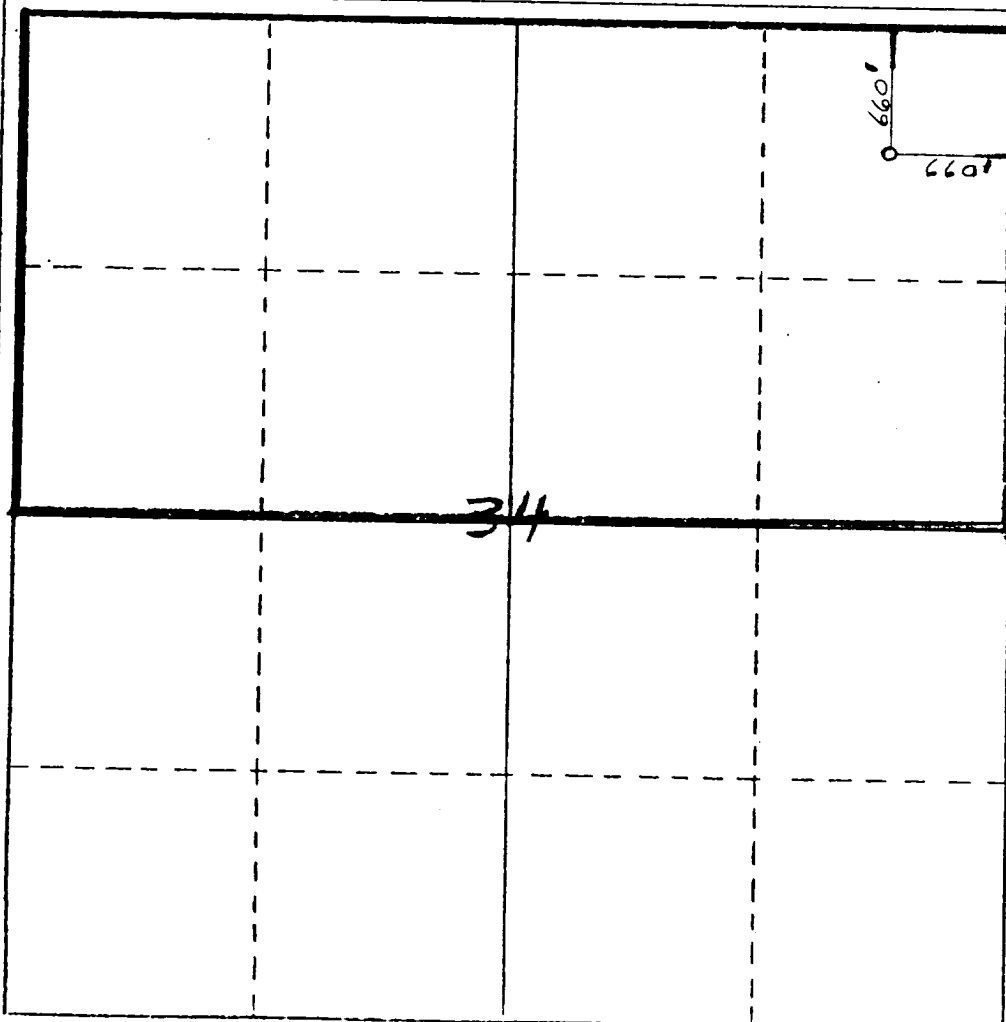
Operator O. C. D. Chama Petroleum Company		Lease Hot Tamale State		Well No. 1
Unit Letter A	Section 34	Township 20S	Range 35E	County Lea
Actual Footage Location of Well: 660 feet from the North line and 660 feet from the East line				
Ground Level Elev. 3680' GL	Producing Formation Morrow	Pool S.E. Lea	Dedicated Acreage: 320 Acres	

1. Outline the acreage dedicated to the subject well by colored pencil or hachure marks on the plat below.
2. If more than one lease is dedicated to the well, outline each and identify the ownership thereof (both as to working interest and royalty).
3. If more than one lease of different ownership is dedicated to the well, have the interests of all owners been consolidated by communitization, unitization, force-pooling, etc?

☐ Yes ☐ No If answer is "yes," type of consolidation _____

If answer is "no," list the owners and tract descriptions which have actually been consolidated. (Use reverse side of this form, if necessary.) _____

No allowable will be assigned to the well until all interests have been consolidated (by communitization, unitization, forced-pooling, or otherwise) or until a non-standard unit, eliminating such interests, has been approved by the Commission.



CERTIFICATION

I hereby certify that the information contained herein is true and complete to the best of my knowledge and belief.

Mark K. Nearburg
Name

Mark K. Nearburg
Position

Land Manager & Agent
Company

Chama Petroleum Company
Date

12/2/85

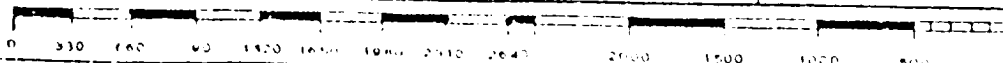
I hereby certify that the well location shown on this plat was plotted from field notes of actual surveys made by me or under my supervision, and that the same is true and correct to the best of my knowledge and belief.

See original plat.

Date Surveyed

Registered Professional Engineer
and/or Land Surveyor

Certificate No.



RECEIVED
DEC 5 - 1985
O.C.D.
HOBBS OFFICE