

**NEW MEXICO OIL CONSERVATION COMMISSION
WELL LOCATION AND ACREAGE DEDICATION PLAT**

Form C-102
Supersedes C-128
Effective 1-1-65

All distances must be from the outer boundaries of the Section.

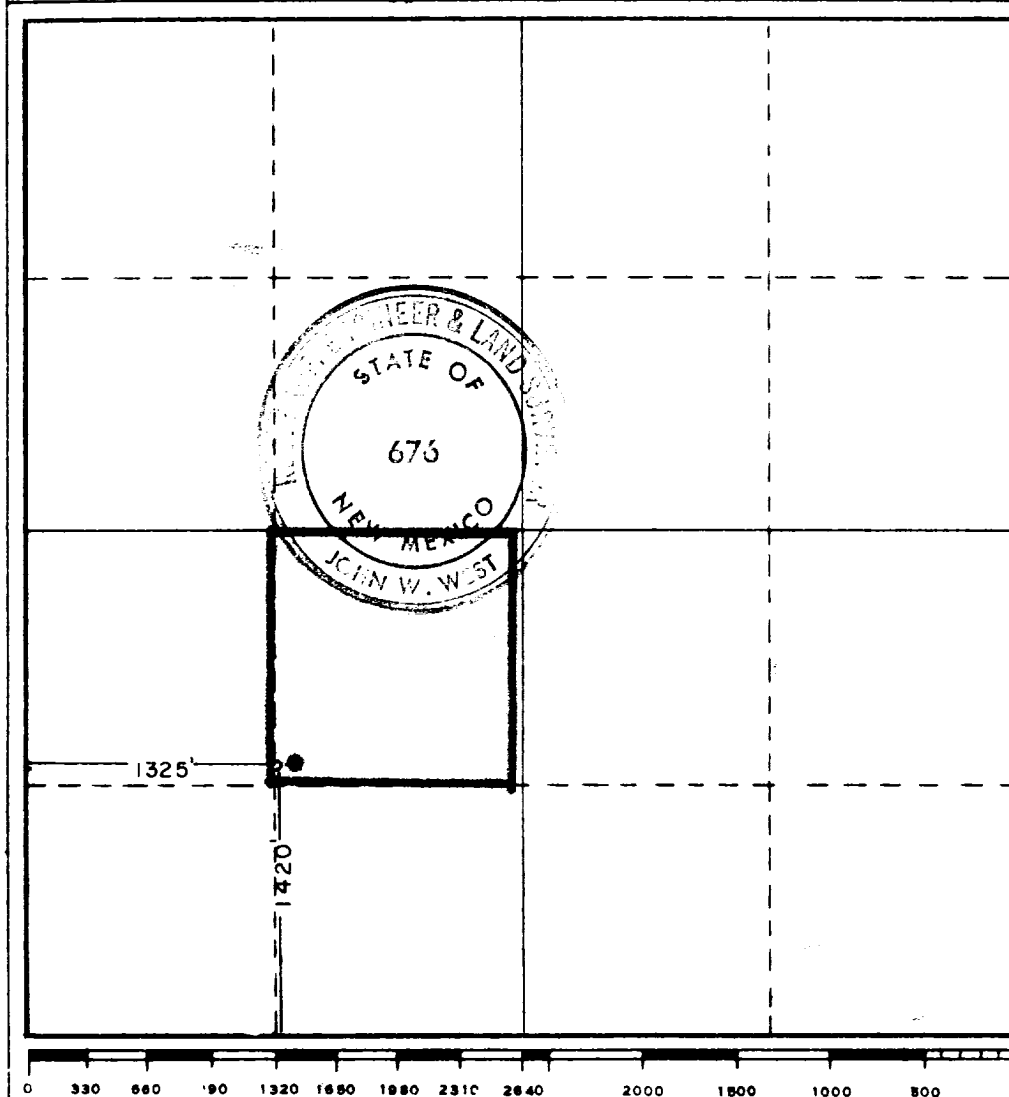
Operator GULF OIL CORPORATION			Lease WEST PEARL QUEEN UNIT		Well No. 165
Unit Letter K	Section 29	Township 19-S	Range 35-E	County LEA	
Actual Footage Location of Well: 1420 feet from the SOUTH line and 1325 feet from the WEST line					
Ground Level Elev.	Producing Formation Queen		Pool Pearl Queen		Dedicated Acreage: 40 Acres

1. Outline the acreage dedicated to the subject well by colored pencil or hachure marks on the plat below.
2. If more than one lease is dedicated to the well, outline each and identify the ownership thereof (both as to working interest and royalty).
3. If more than one lease of different ownership is dedicated to the well, have the interests of all owners been consolidated by communitization, unitization, force-pooling, etc?

☐ Yes ☐ No If answer is "yes," type of consolidation _____

If answer is "no," list the owners and tract descriptions which have actually been consolidated. (Use reverse side of this form if necessary.) _____

No allowable will be assigned to the well until all interests have been consolidated (by communitization, unitization, forced-pooling, or otherwise) or until a non-standard unit, eliminating such interests, has been approved by the Commission. **NSL will be applied for.**



CERTIFICATION	
I hereby certify that the information contained herein is true and complete to the best of my knowledge and belief.	
Name	ORIGINAL SIGNED BY C. D. BORLAND
Position	Area Production Manager
Company	Gulf Oil Corporation
Date	March 28, 1969
I hereby certify that the well location shown on this plat was plotted from field notes of actual surveys made by me or under my supervision, and that the same is true and correct to the best of my knowledge and belief.	
Date Surveyed	MARCH 13, 1969
Registered Professional Engineer and/or Land Surveyor	
<i>John W. West</i>	
Certificate No.	676