

All distances must be from the outer boundaries of the Section.

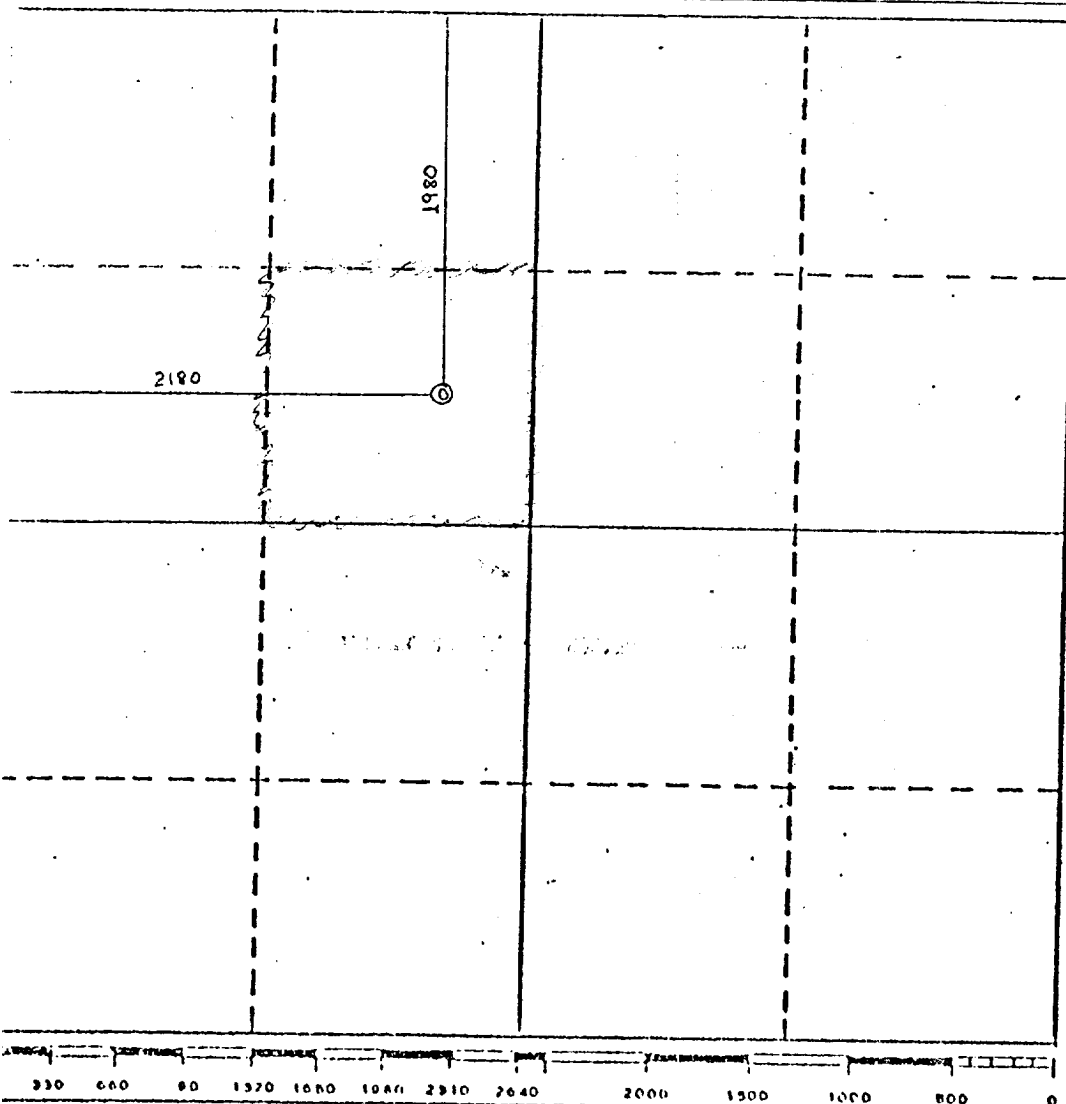
Operator V. H. Westbrook			Lease State B-I		Well No. 1
Init Letter F	Section 9	Township 19S	Range 36E	County Lea	
Actual Postage Location of Well:					
1980 feet from the North line and 2180 feet from the West line					
Ground Level Elev. 3792.3	Producing Formation Wolfcamp	Pool Undesignated		Dedicated Acreage: 40 Acres	

1. Outline the acreage dedicated to the subject well by colored pencil or hatchure marks on the plat below.
2. If more than one lease is dedicated to the well, outline each and identify the ownership thereof (both as to working interest and royalty).
3. If more than one lease of different ownership is dedicated to the well, have the interests of all owners been consolidated by communitization, unitization, force-pooling, etc?

☐ Yes ☐ No If answer is "yes," type of consolidation _____

If answer is "no," list the owners and tract descriptions which have actually been consolidated. (Use reverse side of this form if necessary.) _____

No allowable will be assigned to the well until all interests have been consolidated (by communitization, unitization, forced-pooling, or otherwise) or until a non-standard unit, eliminating such interests, has been approved by the Division.



CERTIFICATION	
I hereby certify that the information contained herein is true and complete to the best of my knowledge and belief.	
Name	<i>V. H. Westbrook</i>
Position	Operator
Company	V. H. Westbrook
Date	7-30-81
I hereby certify that the well location shown on this plat was plotted from field notes of actual surveys made by me or under my supervision, and that the same is true and correct to the best of my knowledge and belief.	
August 18, 1969	
I Date Surveyed <i>James E. Esmond</i>	
Registered Professional Engineer and/or Land Surveyor Freese, Nichols & Esmond Consulting Engineers	
Certificate No.	1411