

Submit 3 Copies  
to Appropriate  
District Office

State of New Mexico  
Energy, Minerals and Natural Resources Department

Form C-103  
Revised 1-1-89

OIL CONSERVATION DIVISION

DISTRICT I

P.O. Box 1980, Hobbs NM 88241-1980

DISTRICT II

P.O. Drawer DD, Artesia, NM 88210

DISTRICT III

1000 Rio Brazos Rd., Aztec, NM 87410

2040 Pacheco St.  
Santa Fe, NM 87505

WELL API NO.

30-025-23632

5. Indicate Type of Lease

STATE ☐

FEE ☒

6. State Oil & Gas Lease No.

SUNDRY NOTICES AND REPORTS ON WELLS

(DO NOT USE THIS FORM FOR PROPOSALS TO DRILL OR TO DEEPEN OR PLUG BACK TO A  
DIFFERENT RESERVOIR. USE "APPLICATION FOR PERMIT"  
(FORM C-101) FOR SUCH PROPOSALS.)

1. Type of Well:

OIL  
WELL ☒

GAS  
WELL ☐

OTHER

2. Name of Operator

ARCO Permian

8. Well No.

9

3. Address of Operator

P.O. Box 1610 Midland, TX 79702

9. Pool name or Wildcat

WILDCAT EUMENT Y-SR

4. Well Location

Unit Letter M : 800 Feet From The SOUTH Line and 660 Feet From The WEST Line

Section

31

Township

19S

Range

37E

NMPM

LEA

County

10. Elevation (Show whether DF, RKB, RT, GR, etc.)

3586' GR

11.

Check Appropriate Box to Indicate Nature of Notice, Report, or Other Data

NOTICE OF INTENTION TO:

PERFORM REMEDIAL WORK ☐

PLUG AND ABANDON ☒

TEMPORARILY ABANDON ☐

CHANGE PLANS ☐

PULL OR ALTER CASING ☐

OTHER: ☐

SUBSEQUENT REPORT OF:

REMEDIAL WORK ☐

ALTERING CASING ☐

COMMENCE DRILLING OPNS. ☐

PLUG AND ABANDONMENT ☒

CASING TEST AND CEMENT JOB ☐

OTHER: ☐

12. Describe Proposed or Completed Operations (Clearly state all pertinent details, and give pertinent dates, including estimated date of starting any proposed work) SEE RULE 1103.

LD TUBING, RELEASE PACKER AND POOH.

GIH W/CIBP ON 2-7/8" TBT AND SET @5080'

SPOT 15 SX CEMENT ON TOP OF CIBP. 35' OR 25 SX

DISPLACE HOLE W/9.5# MUD.

PU AND SPOT 25 SX PLUG AT 3645-3545' (9-5/8" CSG SHOE).

PU AND SPOT 25 SX PLUG AT 1025'-1125' (TOP OF SALT).

PU AND SPOT 25 SX PLUG AT 610'-510' (13-3/8" CSG SHOE). POOH W/TBG.

ND BOP. SPOT 10 SX PLUG 15'-SURFACE. CUT OFF WELLHEAD. RELEASE RIG.

THE COMMISSION MUST BE NOTIFIED 24  
HOURS BEFORE THE STARTING OF  
PLUGGING OPERATIONS FOR THE CUBS  
TO BE APPROVED

I hereby certify that the information above is true and complete to the best of my knowledge and belief.

SIGNATURE

Laurie Cherry

TITLE REG./COMP. ASST

DATE 1/22/99

TYPE OR PRINT NAME LAURIE CHERRY

TELEPHONE NO. 915-688-5532

(This space for State Use)

APPROVED BY

TITLE

DATE

CONDITIONS OF APPROVAL, IF ANY:

JC

dp

## PLUG AND ABANDON PROCEDURE

**DATE:** January 22, 1999

**WELL:** J. R. Phillips "A" # 9      **DRILLED:** 1971      **FIELD:** Eumont      **COUNTY:** Lea, New Mexico

**BY:** Dan Tuffly      **TD:** 9650'      **PBD:** 5220'      **DATUM:** 3587' RKB

<b>CASING:</b>	<b>SIZE</b>	<b>WEIGHT</b>	<b>GRADE</b>	<b>SET @</b>	<b>SX CMT</b>	<b>TOC</b>
<b>SURFACE:</b>	13 3/8"	48#	H-40	560'	550	Surf -Circ
<b>INTERMEDIATE:</b>	9 5/8"	32.3/36#	H-40/J-55	3645'	1500	Surf -Circ
<b>PRODUCTION:</b>	5 1/2"	15.5/17#	J-55/N-80	9650'	1440	Surf-Sqz
<b>TUBING:</b>	2 7/8", 6.5#, N-80, 8rd					

**PACKER:** Baker Retrievable @ 5008'

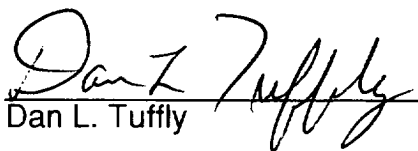
**PERFORATIONS:** Open perms: Glorieta 5106'-5138' 5 sets plugged perms

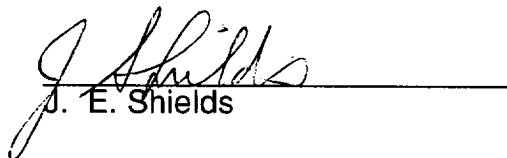
**HISTORY AND BACKGROUND:** Drilled 1971. Recompletion attempts in January, 1999. None were economic.

**SCOPE OF WORK:** Plug and Abandon.

### PROCEDURE

1. Load tbg, release packer and POOH.
2. GIH w/ CIBP on 2 7/8" tbg and set @ 5080'.
3. Spot 15 sx cmt on top of CIBP.
4. Displace hole w/ 9.5# mud.
5. PU and spot 25 sx plug at 3645'-3545' (9 5/8" csg shoe).
6. PU and spot 25 sx plug at 1025'-1125' (top of salt).
7. PU and spot 25 sx plug at 610'-510' (13 3/8" csg shoe). POOH w/ tbg.
8. ND BOP. Spot 10 sx plug 15'-surface. Cut off wellhead. Release rig.

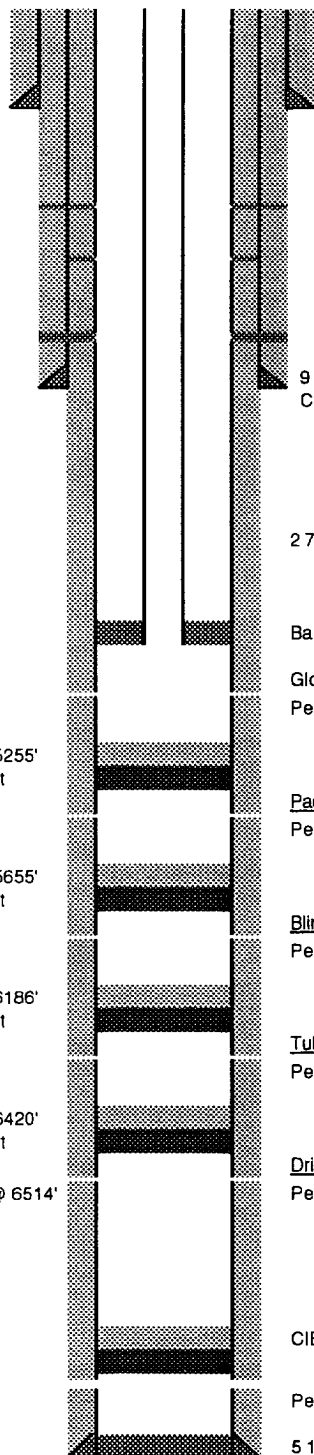
  
Dan L. Tuffly

  
J. E. Shields

RKB 3587'  
GL 3575'

API # 30-015-23632

Spud 1/11/71  
Completed 3/3/71



**J. R. PHILLIPS "A" # 9**

Eumont Field

800' FSL & 660' FWL, Sect 31

T-19S, R-37E

Lea County, New Mexico

**CURRENT WELLBORE SCHEMATIC**