

UNITED STATES
DEPARTMENT OF THE INTERIOR
GEOLOGICAL SURVEY

APPLICATION FOR PERMIT TO DRILL, DEEPEN, OR PLUG BACK

5. LEASE DESIGNATION AND SERIAL NO.

NM 13276

6. IF INDIAN, ALLOTTEE OR TRIBE NAME

7. UNIT AGREEMENT NAME

8. FARM OR LEASE NAME

Wallen Federal

9. WELL NO.

7

10. FIELD AND POOL, OR WILDCAT RIVER

North-Lynch, Yates-Se

11. SEC., T., R., M., OR BLK.
AND SURVEY OR AREA

Sec 18, T 20 S, R 34

12. COUNTY OR PARISH

Lea New Mexico

17. NO. OF ACRES ASSIGNED
TO THIS WELL

40

20. ROTARY OR CABLE TOOLS

Cabletool

22. APPROX. DATE WORK WILL START*

8-18-73

1a. TYPE OF WORK

DRILL ☒DEEPEN ☐PLUG BACK ☐

b. TYPE OF WELL

OIL
WELL ☐GAS
WELL ☐

OTHER

SINGLE
ZONE ☐MULTIPLE
ZONE ☐

2. NAME OF OPERATOR

Walter W. Krug DBA Wallen Production Company

3. ADDRESS OF OPERATOR

308 North Colorado Street, Suite # 4, Midland, Texas 79701

4. LOCATION OF WELL (Report location clearly and in accordance with any State requirements.)*

At surface

2310' / N + E

At proposed prod. zone

14. DISTANCE IN MILES AND DIRECTION FROM NEAREST TOWN OR POST OFFICE*

28 miles W NW of Eunice New Mexico

15. DISTANCE FROM PROPOSED*

LOCATION TO NEAREST

PROPERTY OR LEASE LINE, FT.

(Also to nearest drlg. unit line, if any)

330'

16. NO. OF ACRES IN LEASE

80

17. NO. OF ACRES ASSIGNED
TO THIS WELL

40

18. DISTANCE FROM PROPOSED LOCATION*
TO NEAREST WELL, DRILLING, COMPLETED,
OR APPLIED FOR, ON THIS LEASE, FT.

19. PROPOSED DEPTH

3600

20. ROTARY OR CABLE TOOLS

Cabletool

21. ELEVATIONS (Show whether DF, RT, GR, etc.)

GR 3617

22. APPROX. DATE WORK WILL START*

8-18-73

23.

PROPOSED CASING AND CEMENTING PROGRAM

SIZE OF HOLE	SIZE OF CASING	WEIGHT PER FOOT	SETTING DEPTH	QUANTITY OF CEMENT
15"	13 3/8"	72#	225'	surface
12 1/2"	10 3/4"	40#	950'	50 sxs; will be circulated
8 3/4"	7"	23#	3300'	mudded in-to be pulled
				450 sxs class "c" cement
				w/3% gel and 5# gilsonite
				per sxs; will be circulated
				to the surface of the
				ground
6 1/4"	4 1/2"	9.5#	3600'	50 sxs class "c" neat ceme

IN ABOVE SPACE DESCRIBE PROPOSED PROGRAM: If proposal is to deepen or plug back, give data on present productive zone and proposed new productive zone. If proposal is to drill or deepen directionally, give pertinent data on subsurface locations and measured and true vertical depths. Give blowout preventer program, if any.

24.

SIGNED

Walter W. Krug

TITLE

Engineer

DATE

8-3-1973

(This space for Federal or State office use)

PERMIT NO.

APPROVAL DATE

APPROVED BY

TITLE

CONDITIONS OF APPROVAL, IF ANY:

APPROVED
SEP 17 1973ARTHUR R. BROWN
DISTRICT ENGINEER

*See Instructions On Reverse Side

NEW MEXICO OIL CONSERVATION COMMISSION
WELL LOCATION AND ACREAGE DEDICATION FORM

Form C-102
Supersedes C-128
Effective 1-1-65

All distances must be from the outer boundaries of the Section.

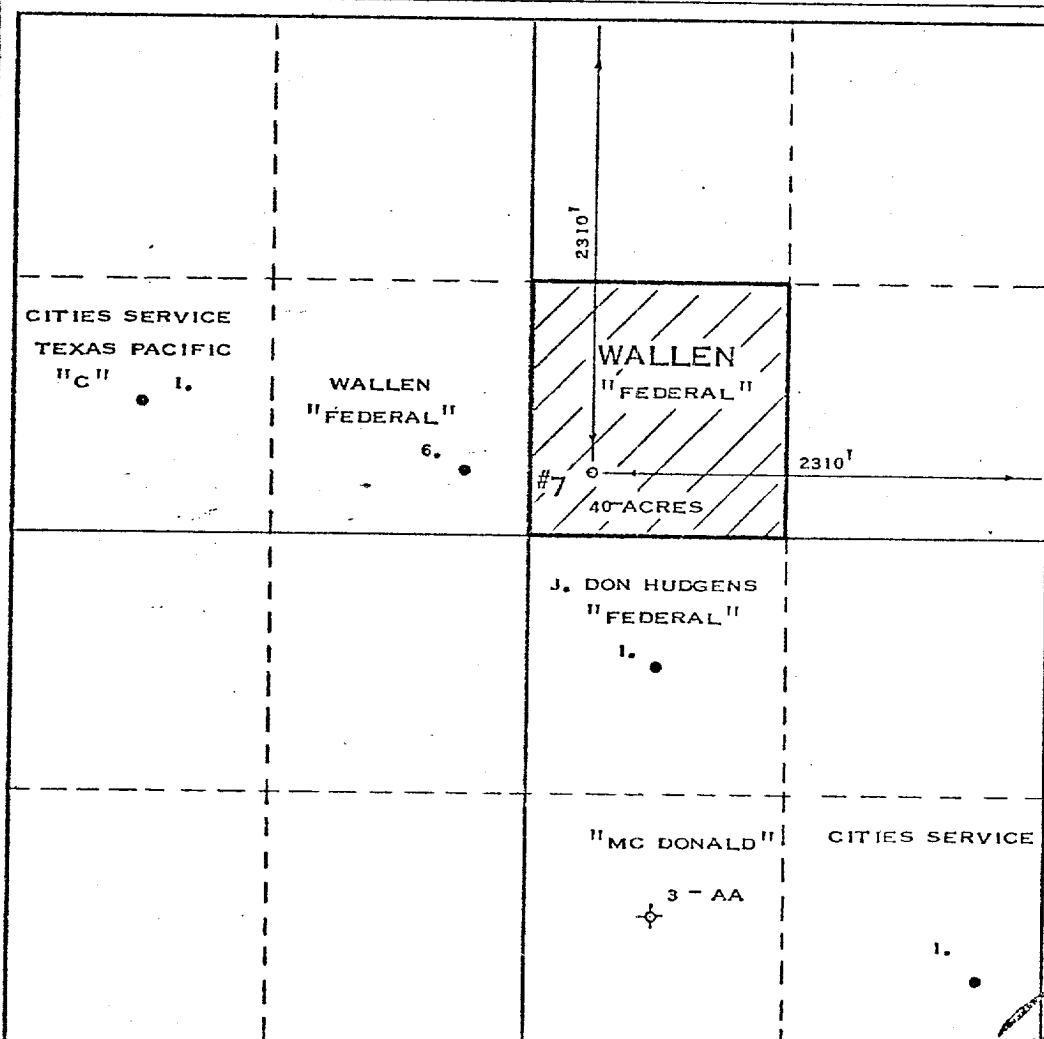
Operator WALLEN PRODUCTION COMPANY		Lease FEDERAL		Well No. 7
Unit Letter "G"	Section 18	Township 20-S	Range 34-E	County LEA
Actual Footage Location of Well: 2310 feet from the NORTH line and 2310 feet from the EAST line				
Ground Level Elev. 3617	Producing Formation SEVEN RIVERS Yates	Pool LYNCH, NORTH	Dedicated Acreage: 40 Acres	

- Outline the acreage dedicated to the subject well by colored pencil or hachure marks on the plat below.
- If more than one lease is dedicated to the well, outline each and identify the ownership thereof (both as to working interest and royalty).
- If more than one lease of different ownership is dedicated to the well, have the interests of all owners been consolidated by communitization, unitization, force-pooling, etc?

☐ Yes ☐ No If answer is "yes," type of consolidation _____

If answer is "no," list the owners and tract descriptions which have actually been consolidated. (Use reverse side of this form if necessary.) _____

No allowable will be assigned to the well until all interests have been consolidated (by communitization, unitization, forced-pooling, or otherwise) or until a non-standard unit, eliminating such interests, has been approved by the Commission.



CERTIFICATION

I hereby certify that the information contained herein is true and complete to the best of my knowledge and belief.

Name Walter H. King
Position Engineer
Company Wallen Prod. Co.
Date 8/4/73

I hereby certify that the well location shown on this plat was plotted from field notes of actual surveys made by me or under my supervision, and that the same is true and correct to the best of my knowledge and belief.

Date Surveyed JULY 31, 1973
Registered Professional Engineer and/or Land Surveyor Max A. Schumann, Jr.
Certificate No. 1510

Walter W. Krug DBA Wallen Production Company

DEVELOPMENT PLAN FOR SURFACE USE

Wallen Federal # 7 well

2310' FNL and 2310 FEL

Section 18, T 20 S,

R 34 E, Lea County,

New Mexico

The following discussion answers the items 1 through 12, concerning the above subject well.

1. Attached to this discussion are plats 1 & 2. Plat 1 shows all pertinent wells, the proposed location, flow lines, salt water line, tank battery and roads.
2. Plat 2 shows the cabletool rig location and pit. As you know, the minimum of surface acreage is used.
3. We are using existing lease road and just adding a 700' extension with an 8" caliche mat on it, because of the sand problems.
4. There will be a 2 3/8" flow line to the already existing flow line from Federal # 6 well.
5. The drilling water will come from a commercial source; a local supply station.
6. The mud wastes from the mud pit will be rolled into a deep dozer ditch and covered (including old pit) with the new dirt from deep ditch.
7. The wire, cable, mud sacks, containers and waste barrels will be hauled off to an approved dump site upon completion or plugging of the well.
8. The restoration of the surface will be done upon completion or plugging of the well and will be accomplished as noted in item 6 above.

WALLEN PRODUCTION CO. Fed #7
SW/4 of NE/4 Sec 18, T20S, R34E, Lea Cty

7

17

County
Road

Proposed Well

Wallen Prod Co.
Fed 6
7 Fed.

Flowline

R.G. Barton

3 AA Wallen
Prod Co.

U.S.

Jewett HOB.

Wallen Fed 3
Prod Co

2 AA

4 Fed Wallen Prod. Co

1 AA

U.S.

7" Culvert

Wallen Prod. Co.
Fed.

WT OR SEP

2 SWD

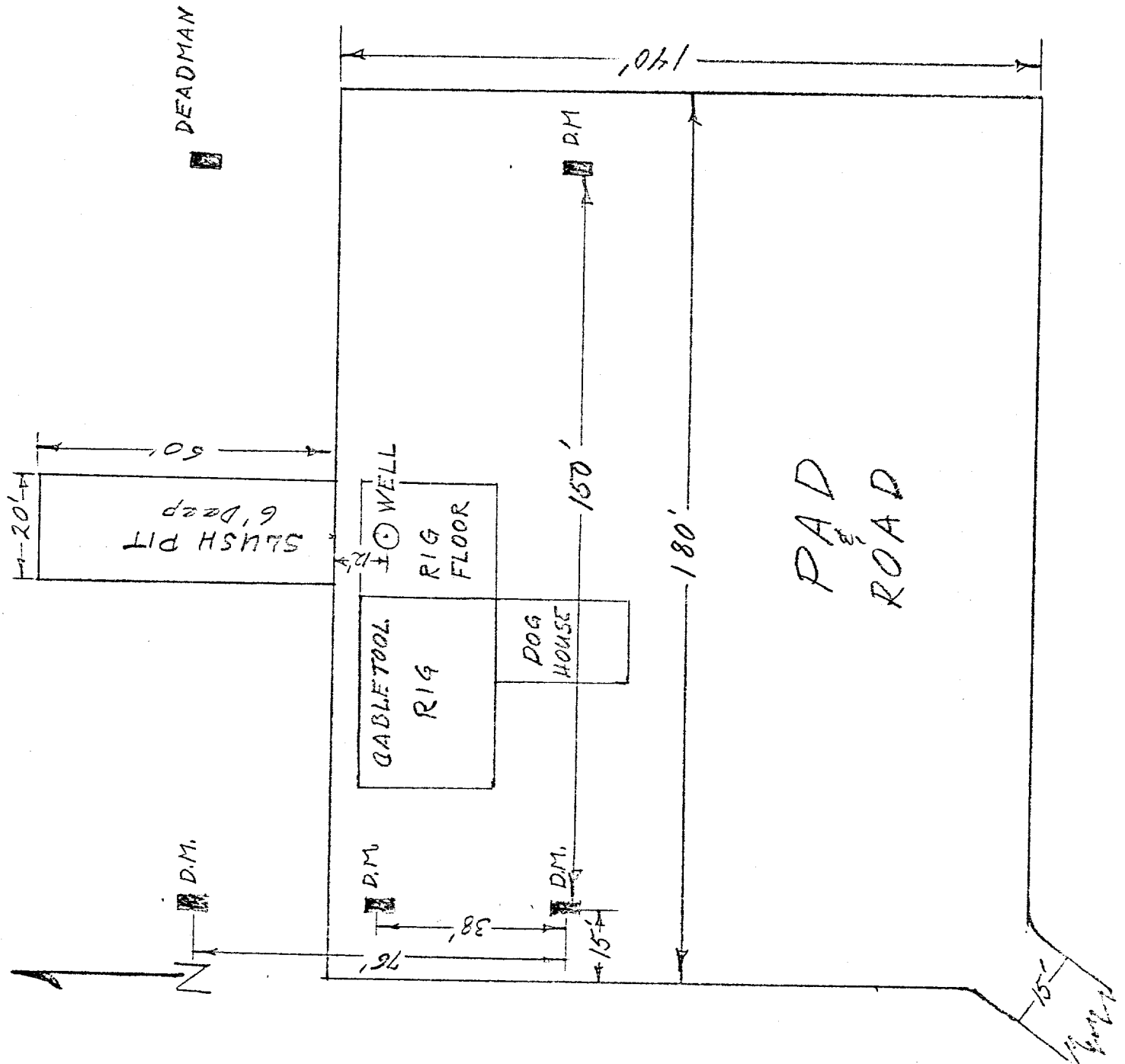
19

CSOC

1

TEAS UNIT

13



CALICHE PAD & ROAD
8" Mat Comp. etc

DEADMAN

7" Pipe, 6' Long &
6' Deep

1" = 30'