

NEW MEXICO OIL CONSERVATION COMMISSION
WELL LOCATION AND ACREAGE DEDICATION PLAT

Form C-122
Supersedes C-128
Effective 1-1-65

All distances must be from the outer boundaries of the Section

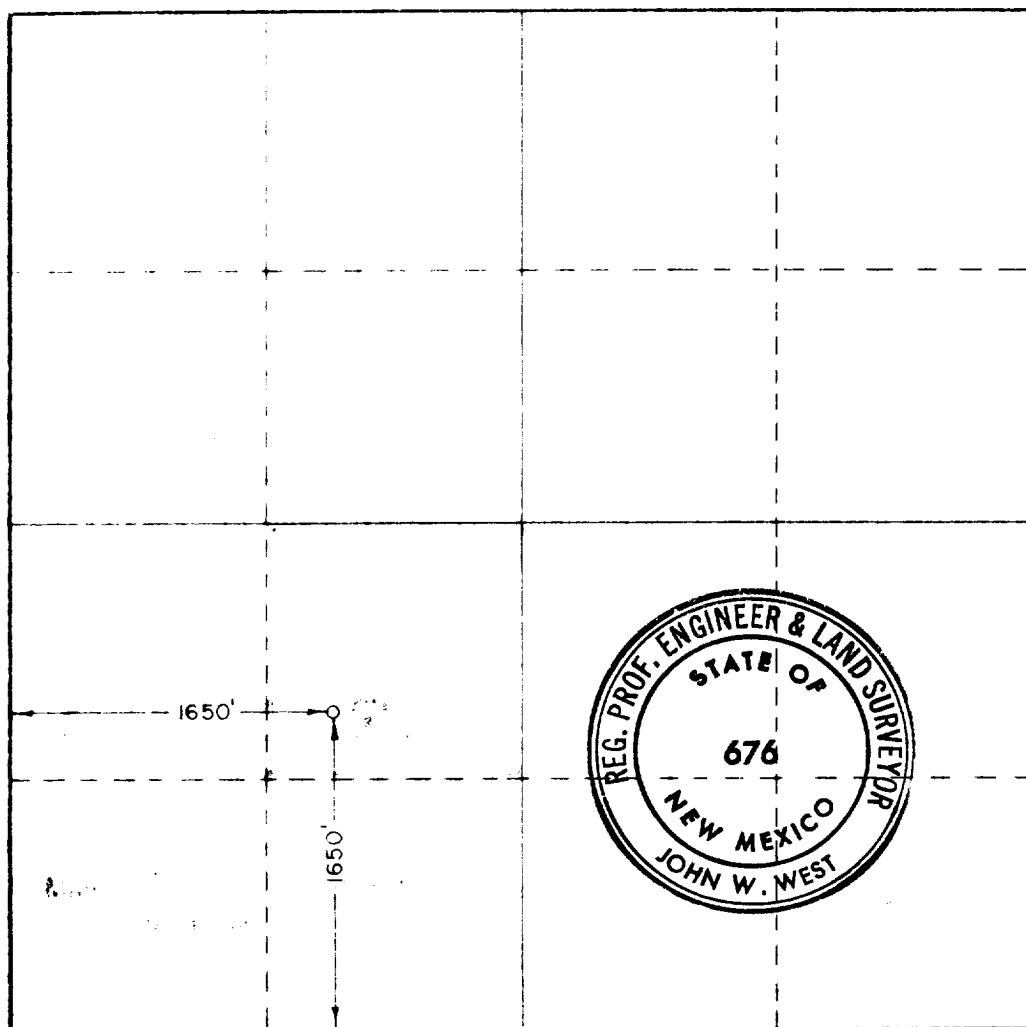
Operator John H. Hendrix			Lease State "T"		Well No. 8
Section K	Section 28	Township 19 South	Range 37 East	County Lea	
Acreage of Section of Well: 1650 feet from the South line and 1650 feet from the West line					
Ground Acres 3590.7	Producing Formation Grayburg & San Andres		Field Eunice-Monument		Dedicated Acreage: 40 Acres

- Outline the acreage dedicated to the subject well by colored pencil or hachure marks on the plat below.
- If more than one lease is dedicated to the well, outline each and identify the ownership thereof (both as to working interest and royalty).
- If more than one lease of different ownership is dedicated to the well, have the interests of all owners been consolidated by communitization, unitization, force-pooling, etc?

☐ Yes ☐ No If answer is "yes," type of consolidation _____

If answer is "no," list the owners and tract descriptions which have actually been consolidated (Use reverse side of this form if necessary.) _____

No allowable will be assigned to the well until all interests have been consolidated (by communitization, unitization, forced-pooling, or otherwise) or until a non-standard unit, eliminating such interests, has been approved by the Commission.



CERTIFICATION

I hereby certify that the information contained herein is true and complete to the best of my knowledge and belief.

Name

John H. Hendrix

Position

Owner-Operator

Company

John H. Hendrix

Date

11-4-74

I hereby certify that the well location shown on this plat was plotted from field notes of actual surveys made by me or under my supervision, and that the same is true and correct to the best of my knowledge and belief.

Date Surveyed

October 25, 1974

Registered Professional Engineer and/or Land Surveyor

John W. West
Certificate No. **676**



RECEIVED

NOV 7 1974

**OIL CONSERVATION COMM.
HOBBS, N. M.**