

NEW MEXICO OIL CONSERVATION COMMISSION
WELL LOCATION AND ACREAGE DEDICATION PLAT

Form O-102
Supersedes O-128
Effective 1-1-65

All distances must be from the outer boundaries of the Section

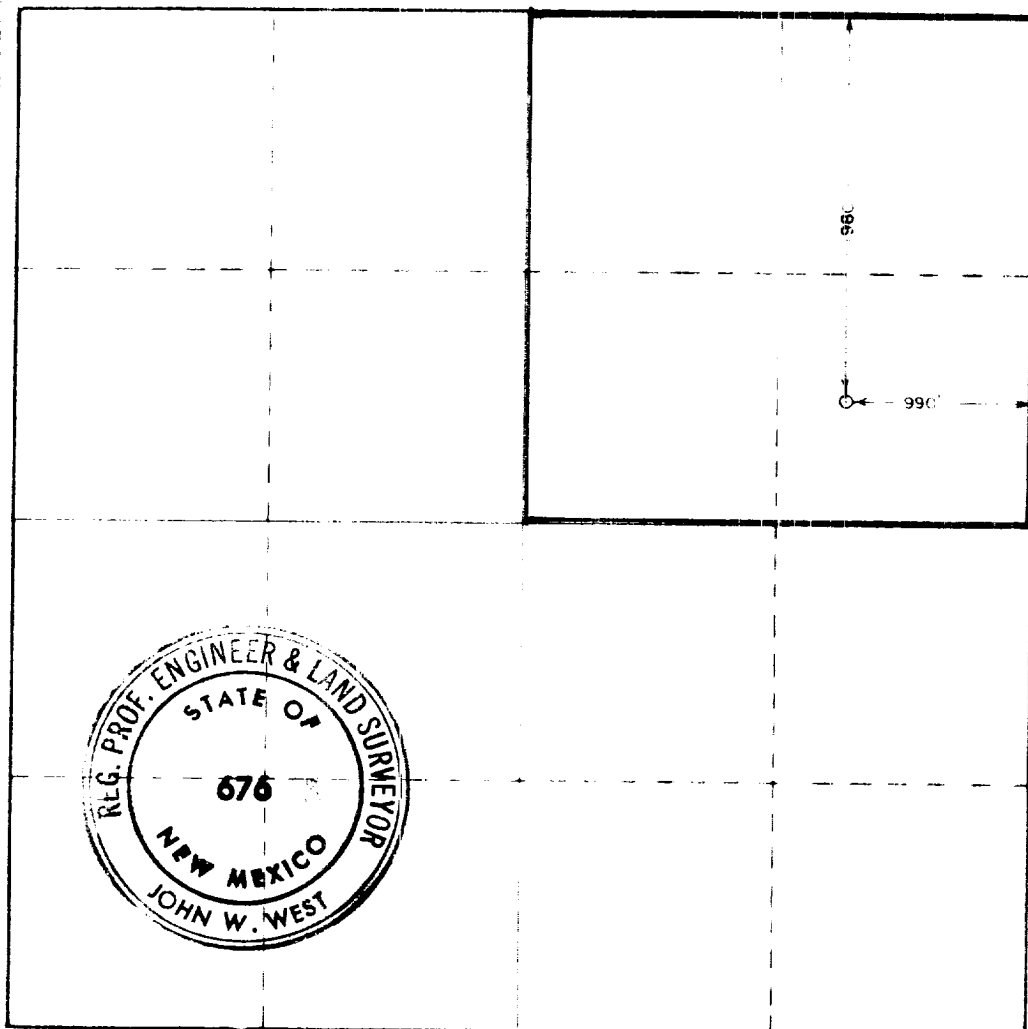
Operator Amerada Hess Corp.			Lease State O			Well No. 5		
Section H	Section 30	Township 19 South	Range 37 East	County Lea				
Distance from the North 1980			Distance from the East 990			Line		
Producing Formation Queen		Pool Eumont		Dedicated Acreage 160		Acres		

1. Outline the acreage dedicated to the subject well by colored pencil or hatchure marks on the plat below.
2. If more than one lease is dedicated to the well, outline each and identify the ownership thereof (both as to working interest and royalty).
3. If more than one lease of different ownership is dedicated to the well, have the interests of all owners been consolidated by communitization, unitization, forced-pooling, etc?

☐ Yes ☐ No If answer is "yes," type of consolidation N/A

If answer is "no," list the owners and tract descriptions which have actually been consolidated (Use reverse side of this form if necessary) _____

No allowable will be assigned to the well until all interests have been consolidated (by communitization, unitization, forced-pooling, or otherwise) or until a non-standard unit, eliminating such interests, has been approved by the Commission.



CERTIFICATION

I hereby certify that the information contained herein is true and complete to the best of my knowledge and belief.

H.O. Porter

H.O. Porter

Name

Supv. Drlg. Admin. Svcs.

Position

Amerada Hess Corporation

Company

December 8, 1978

Date

I hereby certify that the well location shown on this plat was plotted from field notes of actual surveys made by me or under my supervision, and that the same is true and correct to the best of my knowledge and belief.

Date Surveyed

November 30, 1978

Registered Professional Engineer and/or Land Surveyor

John W. West

Certificate No. John W. West

676

Ronald J. Eidson

3239

130 65 90 1320 1680 1980 2340 2640 2000 1500 1000 500 0