

OIL CONSERVATION DIVISION

P.O. Box 2088

Santa Fe, New Mexico 87504-2088

DISTRICT I

P.O. Box 1980, Hobbs, NM 88240

DISTRICT II

P.O. Drawer DD, Artesia, NM 88210

DISTRICT III

1000 Rio Brazos Rd., Aztec, NM 87410

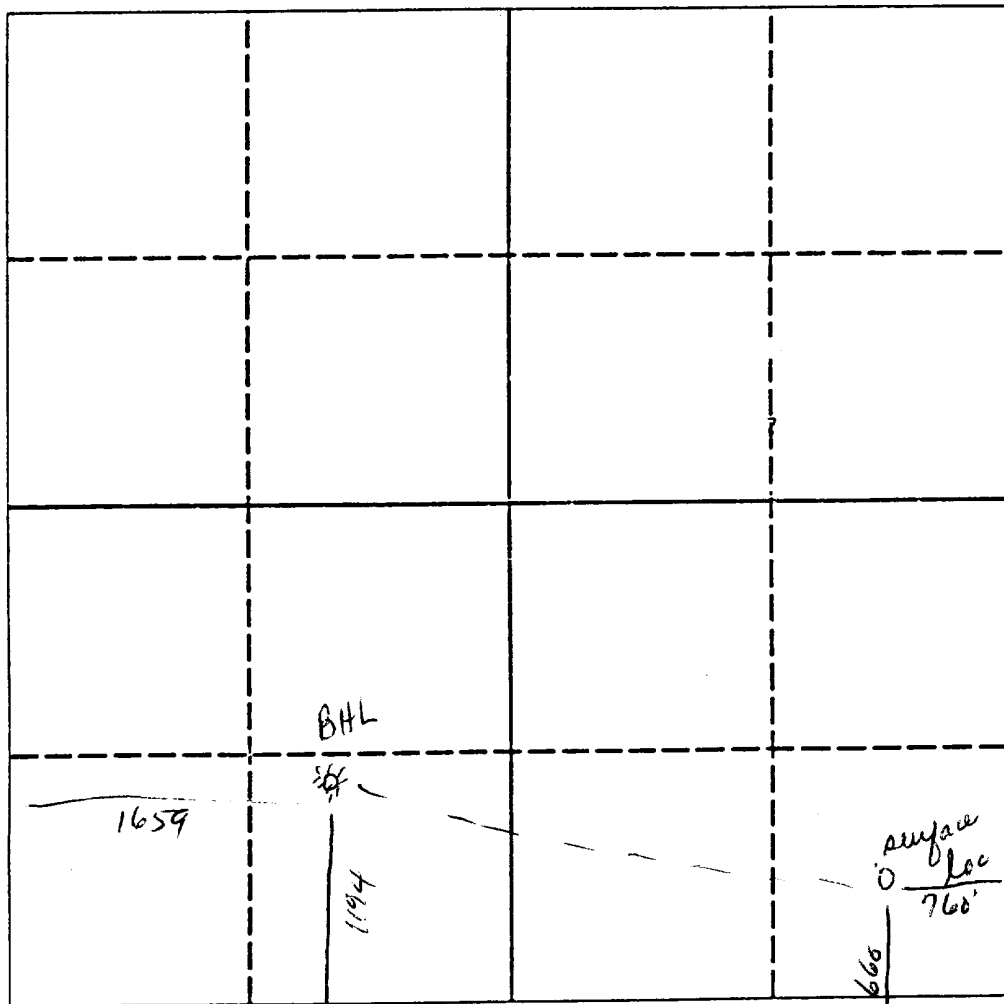
REVISED

WELL LOCATION AND ACREAGE DEDICATION PLAT

All Distances must be from the outer boundaries of the section

Operator Grace Petroleum Corporation			Lease Felmont-Federal			Well No. 2		
Unit Letter Swp	BH ip	Section N 25	Township 20 South	Range 32 East	County NMPM	Lea		
Actual Footage Location of Well: Swp 660 feet from the South line and 1659 feet from the East line						Dedicated Acreage: 160 Acres		
Ground level Elev. 3587		Producing Formation Morrow atoka		Pool South Salt Lake atoka				

1. Outline the acreage dedicated to the subject well by colored pencil or hatchure marks on the plat below.
2. If more than one lease is dedicated to the well, outline each and identify the ownership thereof (both as to working interest and royalty).
3. If more than one lease of different ownership is dedicated to the well, have the interest of all owners been consolidated by communitization, unitization, force-pooling, etc.?
☐ Yes ☐ No If answer is "yes" type of consolidation _____
If answer is "no" list the owners and tract descriptions which have actually been consolidated. (Use reverse side of this form if necessary).
No allowable will be assigned to the well until all interests have been consolidated (by communitization, unitization, forced-pooling, or otherwise) or until a non-standard unit, eliminating such interest, has been approved by the Division.



OPERATOR CERTIFICATION

I hereby certify that the information contained herein is true and complete to the best of my knowledge and belief.

Signature Gerald H. Britsch

Printed Name District Operations Manager
Position

Company Grace Petroleum Corporation

Date April 17, 1990

SURVEYOR CERTIFICATION

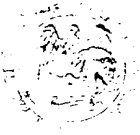
I hereby certify that the well location shown on this plat was plotted from field notes of actual surveys made by me or under my supervision, and that the same is true and correct to the best of my knowledge and belief.

Date Surveyed

Signature & Seal of Professional Surveyor

Certificate No. JOHN W. WEST 676
RONALD J. EIDSON 3239

NSL



STATE OF NEW MEXICO
ENERGY, MINERALS AND NATURAL RESOURCES DEPARTMENT
OIL CONSERVATION DIVISION

GARREY CARRUTHERS
GOVERNOR

POST OFFICE BOX 2088
STATE LAND OFFICE BUILDING
SANTA FE, NEW MEXICO 87504
(505) 827-5800

February 8, 1990

Grace Petroleum Corporation
Hall Tower Park North
10700 North Freeway, Suite 620
Suite 620
Houston, TX 77037

Attention: Terry L. Wright,
District Manager

Amended Administrative Order NSL-2191

Dear Mr. Wright:

It has been called to my attention that Division Administrative Order NSL-2191, dated November 21, 1985, which authorized a non-standard bottomhole location in the Undesignated South Salt Lake Atoka Gas Pool for your Felmont Federal Well No. 2 located 1194 feet from the South line and 1659 feet from the West line (Unit L) of Section 25, Township 20 South, Range 32 East, NMPM, Lea County, New Mexico, is in error. Said order indicates that the W/2 of said Section 25 was to be dedicated to this well forming a 320-acre gas spacing and proration unit; however, the South Salt Lake Atoka Gas Pool is developed on 160-acre spacing, pursuant to Division General Rule 104.A. and 104.C.II. and Division Order No. R-2101.

It is hereby ordered that Administrative Order NSL-2191 be amended at this time to properly reflect the acreage dedicated to the subject well in the South Salt Lake Atoka Gas Pool as the SW/4 of said Section 25 thereby forming a standard 160-acre gas spacing and proration unit for said pool.

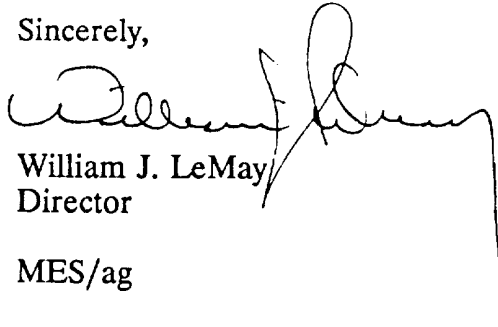
Further, you are hereby ordered to file a new Form C-102 for the subject well dedicating 160-acres. Failure to do so within 60 days of the date of this order shall subject the well to a shut-in order until such requirements are met.

All other provisions in said original Order NSL-2191, not in conflict with the above-described amendments shall remain in full force and effect until further notice.

Amended Administrative Order NSL-2191
Grace Petroelum Corporation
February 8, 1990
Page 2

If you should have any questions or comments concerning this matter, please contact Michael E. Stogner in Santa Fe at (505) 827-5811, or Evelyn Downs in Hobbs at (505) 393-6161.

Sincerely,

A handwritten signature in dark ink, appearing to read 'William J. LeMay', with a long, sweeping horizontal stroke extending to the right.

William J. LeMay
Director

MES/ag

cc: Oil Conservation Division - Hobbs
US Bureau of Land Management - Carlsbad

NEW MEXICO OIL CONSERVATION COMMISSION
WELL LOCATION AND ACREAGE DEDICATION PLAT

Form C-102
Supersedes C-128
Effective 1-1-65

All distances must be from the outer boundaries of the Section.

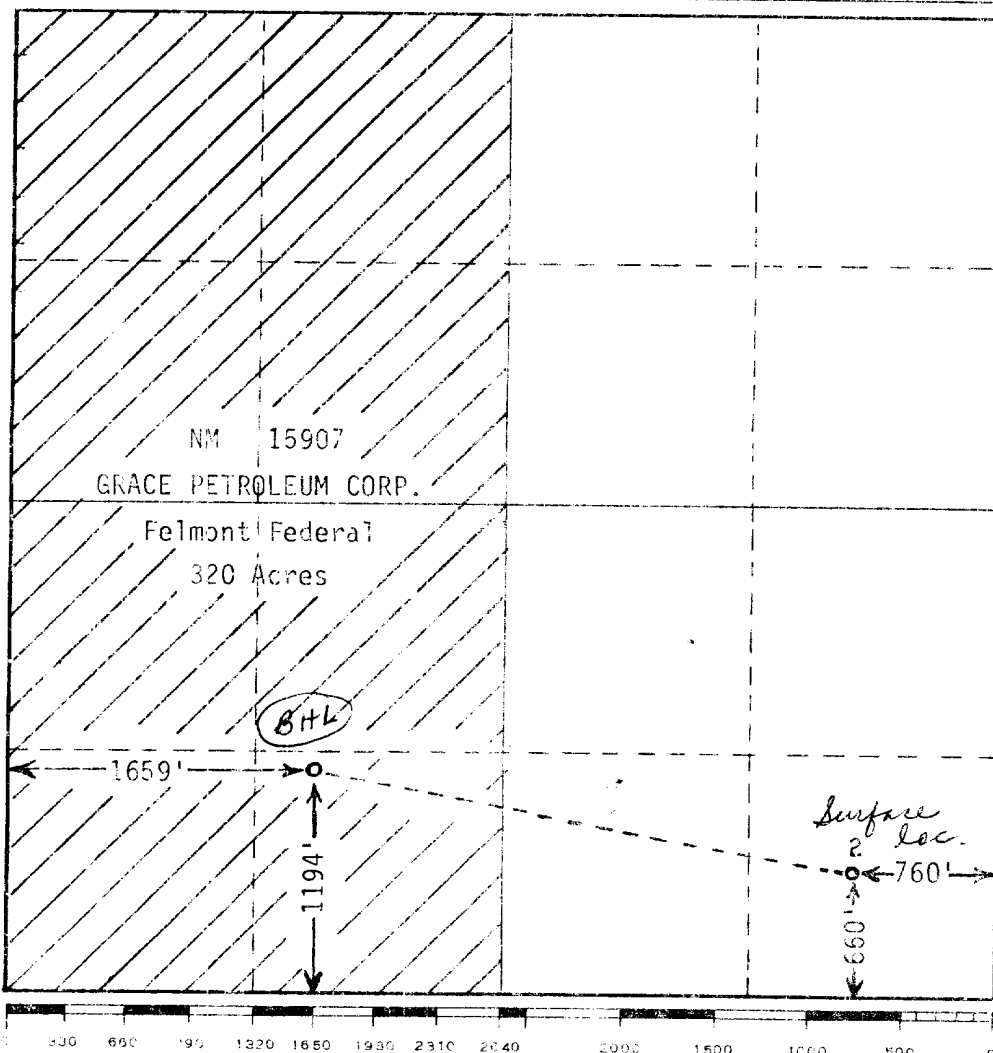
Operator Grace Petroleum Corporation		Lease Felmont Federal		Well No. 2
Unit Letter Surface BH	P N	Section 25	Township 20-S	Range 32-E
County Lea				
Actual Location of Well: Surface 660 feet from the South line and 760 feet from the East Line BH 1194 feet from the South line and 1659 feet from the West line				
Ground Level Elev. 3587' GR	Producing Formation Atoka		Pool Undesignated (Atoka)	Dedicated Acreage: 320 Acres

- Outline the acreage dedicated to the subject well by colored pencil or hatchure marks on the plat below.
- If more than one lease is dedicated to the well, outline each and identify the ownership thereof (both as to working interest and royalty).
- If more than one lease of different ownership is dedicated to the well, have the interests of all owners been consolidated by communitization, unitization, force-pooling, etc?

☐ Yes ☐ No If answer is "yes," type of consolidation _____

If answer is "no," list the owners and tract descriptions which have actually been consolidated. (Use reverse side of this form if necessary.) _____

No allowable will be assigned to the well until all interests have been consolidated (by communitization, unitization, forced-pooling, or otherwise) or until a non-standard unit, eliminating such interests, has been approved by the Commission.



CERTIFICATION

I hereby certify that the information contained herein is true and complete to the best of my knowledge and belief.

Name: Buddy J. Knight

Position: District Operations Manager

Company: Grace Petroleum Corporation

Date: 12-6-85

I hereby certify that the well location shown on this plat was plotted from field notes of actual surveys made by me or under my supervision, and that the same is true and correct to the best of my knowledge and belief.

November 15, 1977 (For Morro) Date Surveyed

Max A. Schumann, Jr.
Registered Professional Engineer
and/or Land Surveyor

1510
Certificate No.

RECEIVED
DEC 16 1985
O.C.D.
HOBBS OFFICE

NEW MEXICO OIL CONSERVATION COMMISSION
WELL LOCATION AND ACREAGE DEDICATION AT

Form C-102
Supersedes C-128
Effective 1-1-65

All distances must be from the outer boundaries of the Section.

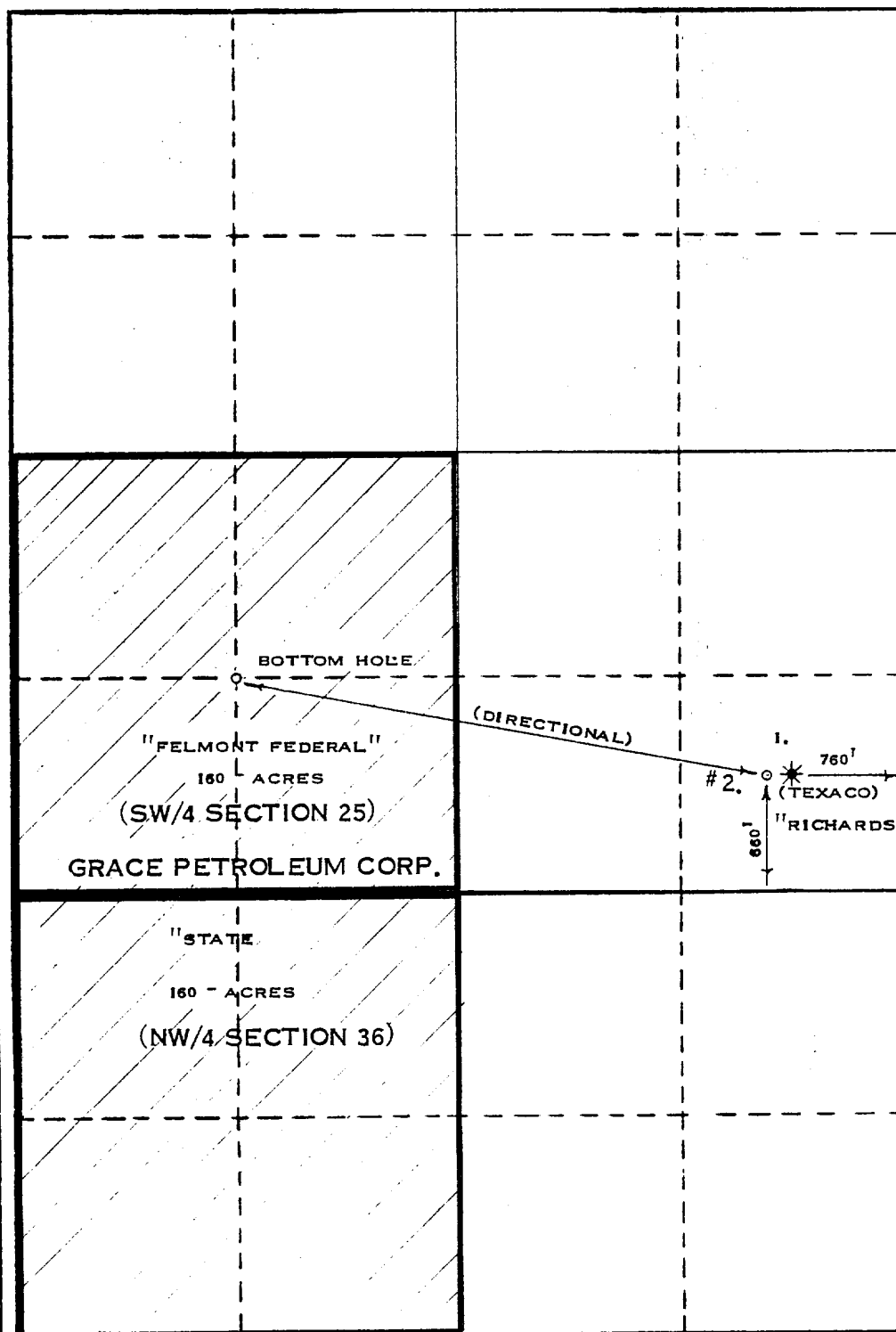
Operator GRACE PETROLEUM CORPORATION			Lease FELMONT-FEDERAL		Well No. 2
Unit Letter "P"	Section 25	Township 20 - S	Range 32 - E	County LEA	
Actual Footage Location of Well: 660 feet from the SOUTH line and 760 feet from the EAST line					
Ground Level Elev. 3587	Producing Formation MORROW		Pool SOUTH SALT LAKE		Dedicated Acreage: 320 Acres

1. Outline the acreage dedicated to the subject well by colored pencil or hachure marks on the plat below.
2. If more than one lease is dedicated to the well, outline each and identify the ownership thereof (both as to working interest and royalty).
3. If more than one lease of different ownership is dedicated to the well, have the interests of all owners been consolidated by communitization, unitization, force-pooling, etc?

☒ Yes ☐ No If answer is "yes," type of consolidation Communitization in progress

If answer is "no," list the owners and tract descriptions which have actually been consolidated. (Use reverse side of this form if necessary.)

No allowable will be assigned to the well until all interests have been consolidated (by communitization, unitization, forced-pooling, or otherwise) or until a non-standard unit, eliminating such interests, has been approved by the Commission.



CERTIFICATION

I hereby certify that the information contained herein is true and complete to the best of my knowledge and belief.

Name
Buddy J. Knight

Position
District Production Manager

Company
Grace Petroleum Corporation

Date
April 16, 1979

I hereby certify that the well location shown on this plat was plotted from field notes of actual surveys made by me or under my supervision, and that the same is true and correct to the best of my knowledge and belief.

REVISED MARCH 27, 1979

Date Surveyed
NOVEMBER 15, 1977

Registered Professional Engineer and/or Land Surveyor

Max K. Schumann Jr.
MAX K. SCHUMANN JR.

Certificate No. **1510**

- ☒ Grace Petroleum Corp. Lease
— 160 acres (SW/4 Sec. 25)
Federal Lease NM-15907
WI: Grace Petr. Corp. 100%
Royalty: 12½% U.S. Gov't
ORRI: 3% Kathryn B. Richardson & Heirs of Devises
Edgar Roy Richardson
6¼% Felmont Oil Corp.
2.375% James C. Whitten
2.375% Sam H. Snoddy
- ☐ Grace Petroleum Corp. Lease
160 acres (NW/4 Sec. 36)
State Lease L 6452
WI: Grace Petr. Corp. 100%
Royalty: 12½% St. of N. M.
ORRI: 6¼% Felmont Oil Corp.
2.375% James C. Whitten
2.375% Sam H. Snoddy

RECEIVED

APR 13 6 15 70

OIL CONSERVATION COMM.
L. 139, P. 11

COUNTY LEA FIELD Salt Lake, S. STATE NM
OPR GRACE PETROLEUM CORP. API 30-025-26302
NO 2 LEASE Felmont Federal NIAP
Sec 25, T20S, R32E CO-ORD
660' FSL, 760' FEL of Sec 3-4-16 NM
1 mi SE/Halfway SPD 7-23-79 CMP 2-24-80

CSC	WELL CLASS: INIT D FIN DG ELEV L & S			
	FORMATION	DATUM	FORMATION	DATUM
30" at 30' w/15 sx				
20" at 1208' w/2210 sx				
13 3/8" at 2776' w/1530 sx				
9 5/8" at 5210' w/1800 sx				
5 1/2" at 14,387' w/450 sx				
2 7/8" at 13,864'				
	TD 14,417' (MRRW)		PBD	14,331'

IP (Morrow) Perfs 14,031-287' F 2200 MCFGPD + 29 BO. Pot
based on 24 hr test thru 12/64" chk. GOR 75,862; gty 58;
CP Pkr, TP 4455#

CONTR Warton #1 OPRS ELEV 3587' GL PD 14,100' RT

F.R. 4-30-79

(Morrow)

7-24-79 Drlg 287'
7-31-79 Drlg 1208'
8-7-79 Drlg 2048' Anhy & salt
8-14-79 Drlg 3014' Anhy & lm
8-21-79 Drlg 5107' lm
8-27-79 Drlg 6066' sd & dolo
9-4-79 Drlg 7249'
9-11-79 TD 8474'; fsg
9-25-79 Drlg 9794' sh
10-2-79 Drlg 10,048'
10-10-79 Drlg 10,527' lm & sh
10-23-79 TD 11,752'; Trip
10-30-79 Drlg 12,275' lm & sh
11-6-79 TD 12,416'; Rmg @ 12,281'
11-14-79 TD 12,544'; Drlg by @ 11,876'
PB to 11,566' w/215 sx & Drld off
Drlg deviated hole 3-4-16 NM

LEA
GRACE PETROLEUM CORP.

Salt Lake, S.
2 Felmont Federal
Sec 25, T20S, R32E

NM
Page 2

11-26-79 Drlg 12,821'
12-4-79 Drlg 13,311' sh & lm
12-11-79 Drlg 13,568' sh & lm
12-18-79 Drlg 13,931' lm & sh
1-8-80 TD 14,417'; SI WO/Tbg
1-15-80 TD 14,417'; Prep DOC
1-22-80 TD 14,417'; PBD 14,331'; Tstg
Perf (Morrow) 14,031-039', 14,097-111',
14,279-287'
Natural
1-29-80 TD 14,147'; PBD 14,331'; SI/WO Prod Equip
2-11-80 TD 14,417'; PBD 14,331'; SI
2-27-80 TD 14,417'; PBD 14,331'; WOSP
CAOF 4477 MCFGPD (14,031-287')
3-4-16 NM

3-17-80 TD 14,417'; PBD 14,331'; Complete
Will Re-Issue if Log Tops become available
Rig Released 12-27-79
3-22-80 COMPLETION ISSUED
5-10-80 RE-ISSUE TO CORRECT WELL DATA

3-4-16 NM
IC 30-025-70141-79