

NEW MEXICO OIL CONSERVATION COMMISSION
WELL LOCATION AND ACREAGE DEDICATION PLAT

Form O-101
Supersedes C-124
Effective 1-1-65

All distances must be from the outer boundaries of the Section

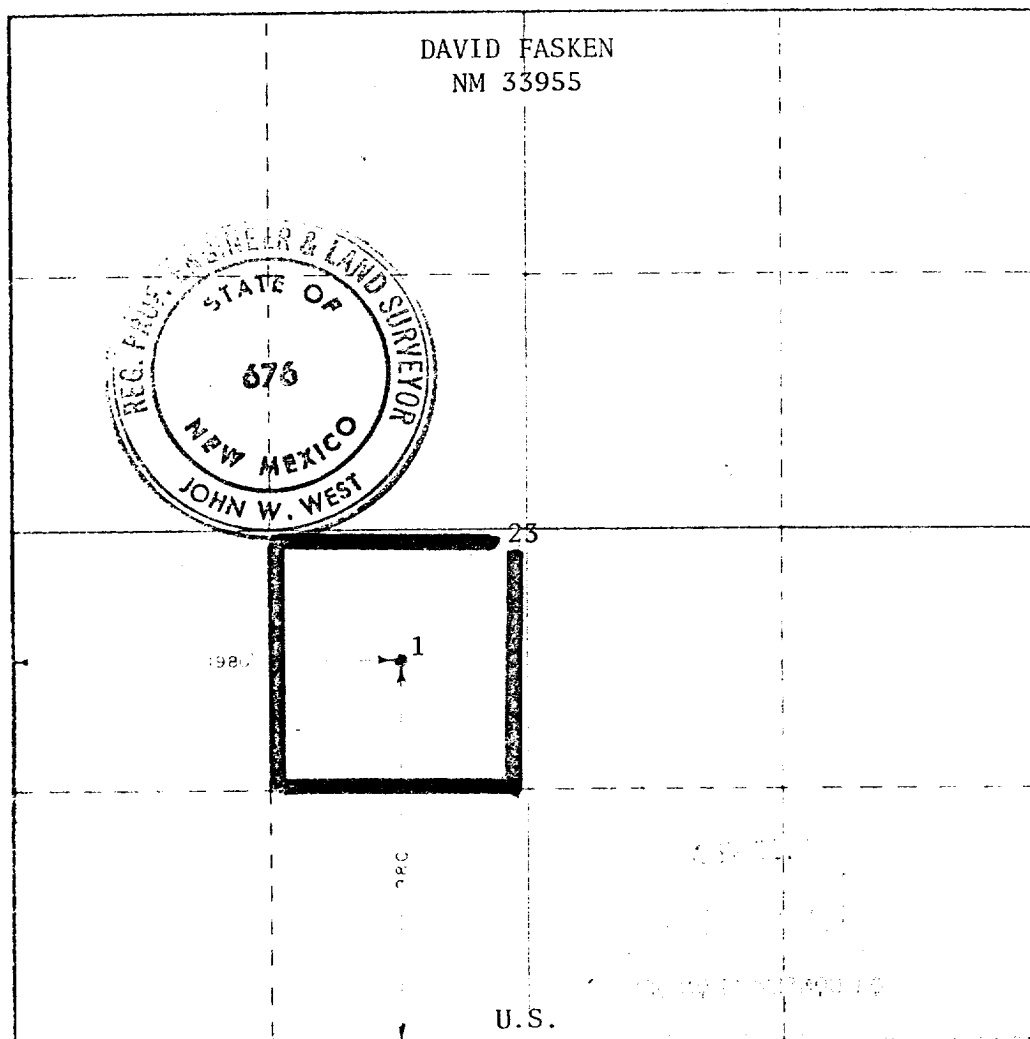
Owner <i>C. W. Trainer David Fasken</i>		Lease <i>Baetz 23</i>		Section <i>1</i>	
Range <i>K</i>	Section <i>23</i>	Township <i>20 South</i>	Range <i>32 East</i>	County <i>Lea</i>	
Year of original location of well <i>1930</i>		Direction <i>South</i>	Year <i>1930</i>		Direction <i>West</i>
Section <i>3545.5</i>	Forming Formation <i>Bone Springs</i>	Well <i>Wildcat UNDESIGNATED</i>		Total Acreage <i>40</i>	

- Outline the acreage dedicated to the subject well by colored pencil or hatchure marks on the plat below.
- If more than one lease is dedicated to the well, outline each and identify the ownership thereof (both as to working interest and royalty)
- If more than one lease of different ownership is dedicated to the well, have the interests of all owners been consolidated by communitization, unitization, force-pooling, etc?

☐ Yes ☐ No If answer is "yes," type of consolidation _____

If answer is "no," list the owners and tract descriptions which have actually been consolidated (Use reverse side of this form if necessary.) _____

No allowable will be assigned to the well until all interests have been consolidated (by communitization, unitization, forced-pooling, or otherwise) or until a non-standard unit, eliminating such interests, has been approved by the Commission.



CERTIFICATION

I hereby certify that the information contained herein is true and complete to the best of my knowledge and belief

Donna Holmes

Agent

C. W. Trainer

January 19, 1979

I hereby certify that the well location shown on this plat was plotted from field notes of actual surveys made by me or under my supervision, and that the same is true and correct to the best of my knowledge and belief

January 12, 1979

John W. West

Certification No. *John W. West 676*
Ronald J. Edson 3239