

JUL 25 1979

NEW MEXICO OIL CONSERVATION COMMISSION
WELL LOCATION AND ACREAGE DEDICATION PLAT

Form O-111
Supersedes O-126
Effective 1-1-65

All distances must be from the outer boundaries of the Section

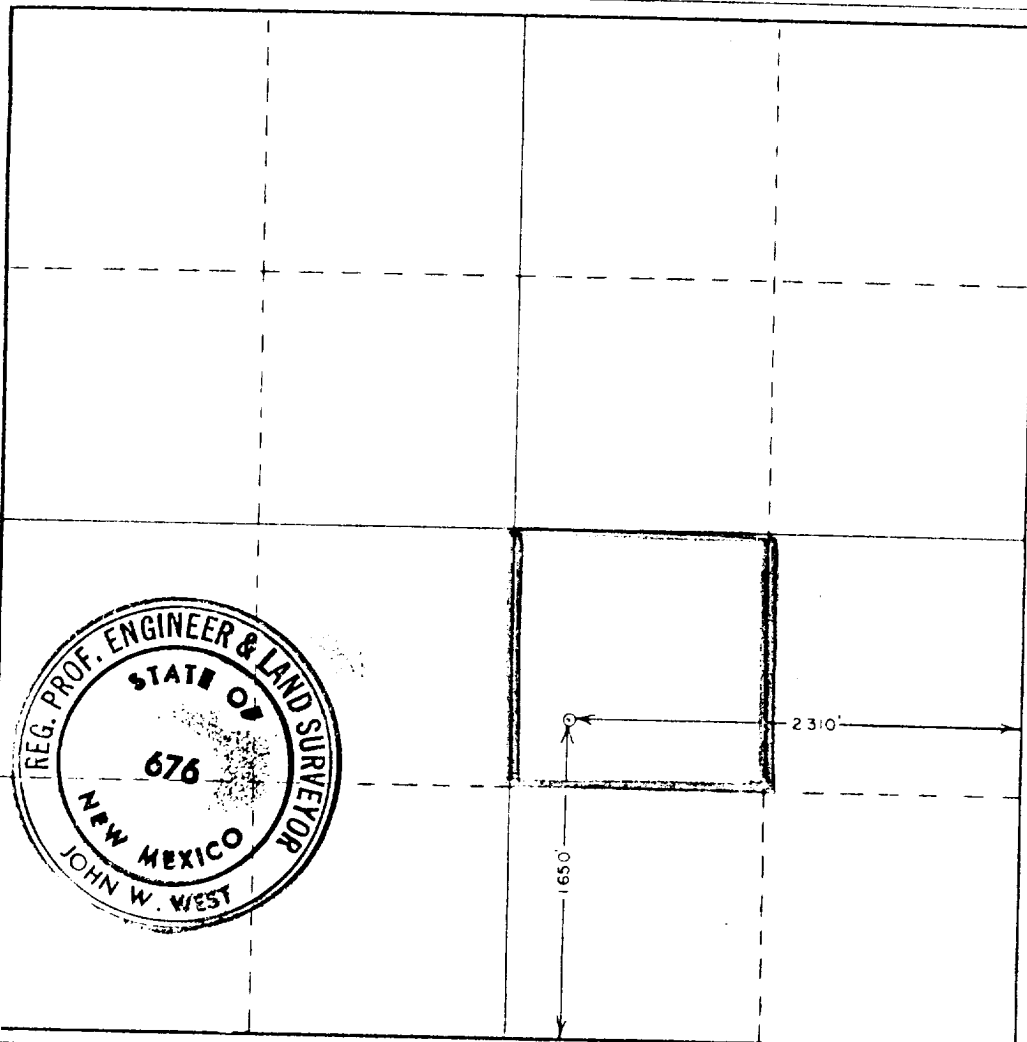
Operator Doyle Hartman			Lease R.H. Huston Jr.			Well No. 2
Tract Letter J	Section 8	Township 19 South	Range 37 East	County Lea		
Actual Footage Location of Well: 1650 feet from the South line and 2310 feet from the East line						
Ground Level Elev. 3684.4	Producing Formation Grayburg		Pool Eunice-Monument		Dedicated Acreage 40	

1. Outline the acreage dedicated to the subject well by colored pencil or hatchure marks on the plat below.
2. If more than one lease is dedicated to the well, outline each and identify the ownership thereof (both as to working interest and royalty).
3. If more than one lease of different ownership is dedicated to the well, have the interests of all owners been consolidated by communitization, unitization, force-pooling, etc?

☐ Yes ☐ No If answer is "yes," type of consolidation _____

If answer is "no," list the owners and tract descriptions which have actually been consolidated. (Use reverse side of this form if necessary.) _____

No allowable will be assigned to the well until all interests have been consolidated (by communitization, unitization, forced-pooling, or otherwise) or until a non-standard unit, eliminating such interests, has been approved by the Commission.



CERTIFICATION

I hereby certify that the information contained herein is true and complete to the best of my knowledge and belief.

Doyle Hartman
Signature

Doyle Hartman

Position

Operator - Part Owner

Capacity

Individual

Date

7-23-79

I hereby certify that the well location shown on this plat was plotted from field notes of actual surveys made by me or under my supervision, and that the same is true and correct to the best of my knowledge and belief.

Date Surveyed

June 8, 1978

Registered Professional Engineer and/or Land Surveyor

John W. West
Signature

Certificate No. John W. West

676

Ronald J. Eidson

3239

500 1000 1500 2000 2500 3000 3500 4000 4500 5000 5500 6000 6500 7000 7500 8000 8500 9000 9500 10000

RECEIVED

JUL 24 1979

O.C.D. HOBBS, OFFICE

113