

OIL CONSERVATION DIVISION

STATE OF NEW MEXICO
ENERGY AND MINERALS DEPARTMENT

P. O. BOX 2088

SANTA FE, NEW MEXICO 87501

102
10-1-79

All distances must be from the outer boundaries of the Section.

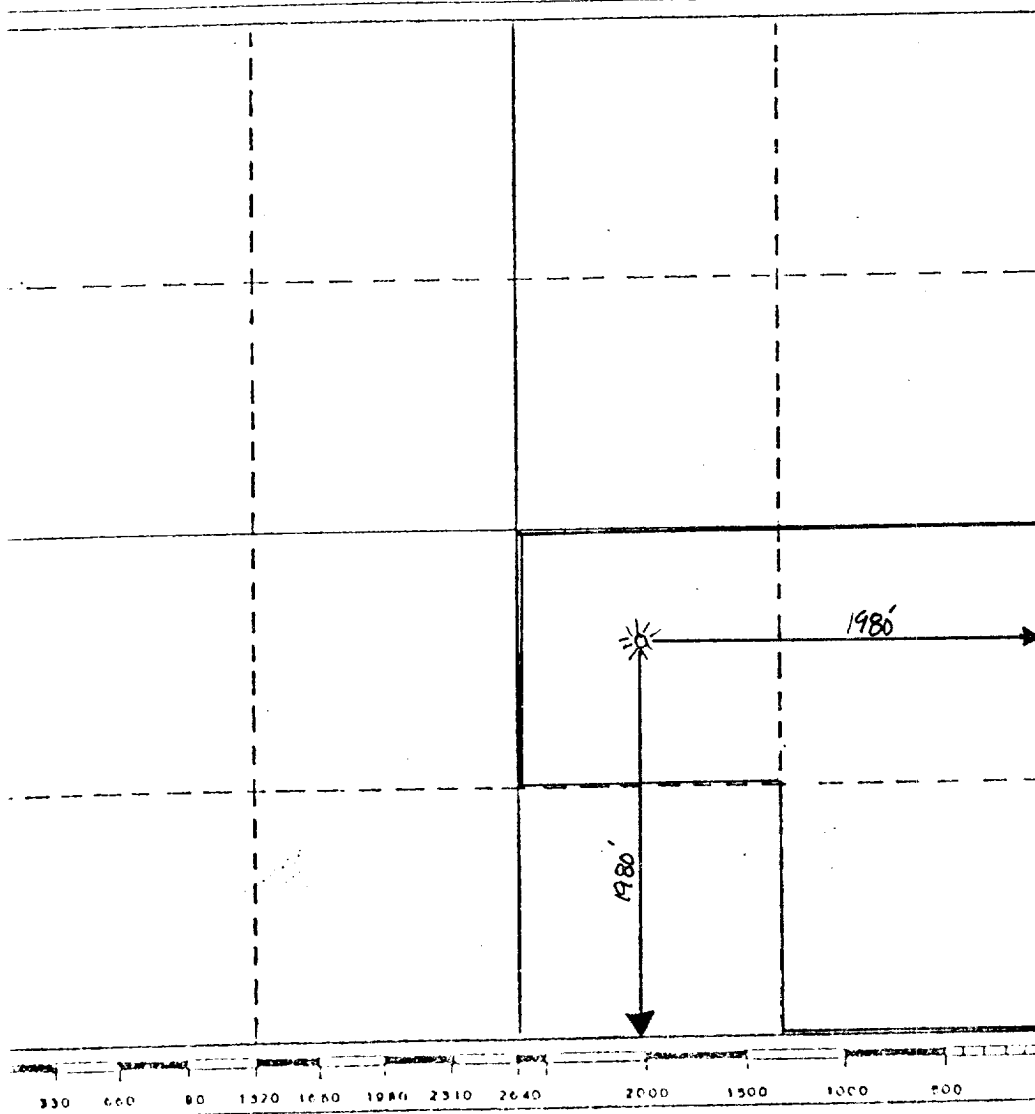
Operator Warrior, Inc.		Lease State WEI "32"		Well No. 3
Section Letter J	Section 32	Township 20 South	Range 36 East	County Lea
Actual Footage Location of Well:				
1980 feet from the South line and	1980 feet from the East line			
Ground Level Elev. 3626.3	Producing Formation Queen	Pool Eumont Yates Seven Rivers Queen	Dedicated Acreage: 120 Acres	

- Outline the acreage dedicated to the subject well by colored pencil or hatchure marks on the plat below.
- If more than one lease is dedicated to the well, outline each and identify the ownership thereof (both as to working interest and royalty).
- If more than one lease of different ownership is dedicated to the well, have the interests of all owners been consolidated by communitization, unitization, force-pooling, etc?

☐ Yes ☐ No If answer is "yes," type of consolidation _____

If answer is "no," list the owners and tract descriptions which have actually been consolidated. (Use reverse side of this form if necessary.) _____

No allowable will be assigned to the well until all interests have been consolidated (by communitization, unitization, forced-pooling, or otherwise) or until a non-standard unit, eliminating such interests, has been approved by the Division.



CERTIFICATION

I hereby certify that the information contained herein is true and complete to the best of my knowledge and belief.

Mohammed Yamin Merchant
Name

Mohammed Yamin Merchant

Position

Consulting Engineer

Company

Warrior, Inc.

Date

January 3, 1983

I hereby certify that the well location shown on this plat was plotted from field notes of actual surveys made by me or under my supervision, and that the same is true and correct to the best of my knowledge and belief.

Date Surveyed

Registered Professional Engineer
and/or Land Surveyor

Certificate No.

RECEIVED
JAN 5 1983
O.C.D.
HARRIS OFFICE

NEW MEXICO OIL CONSERVATION COMMISSION
WELL LOCATION AND ACREAGE DEDICATION PLAT

Form 1-102
Supersedes C-128
Effective 1-1-65

All distances must be from the outer boundaries of the Section.

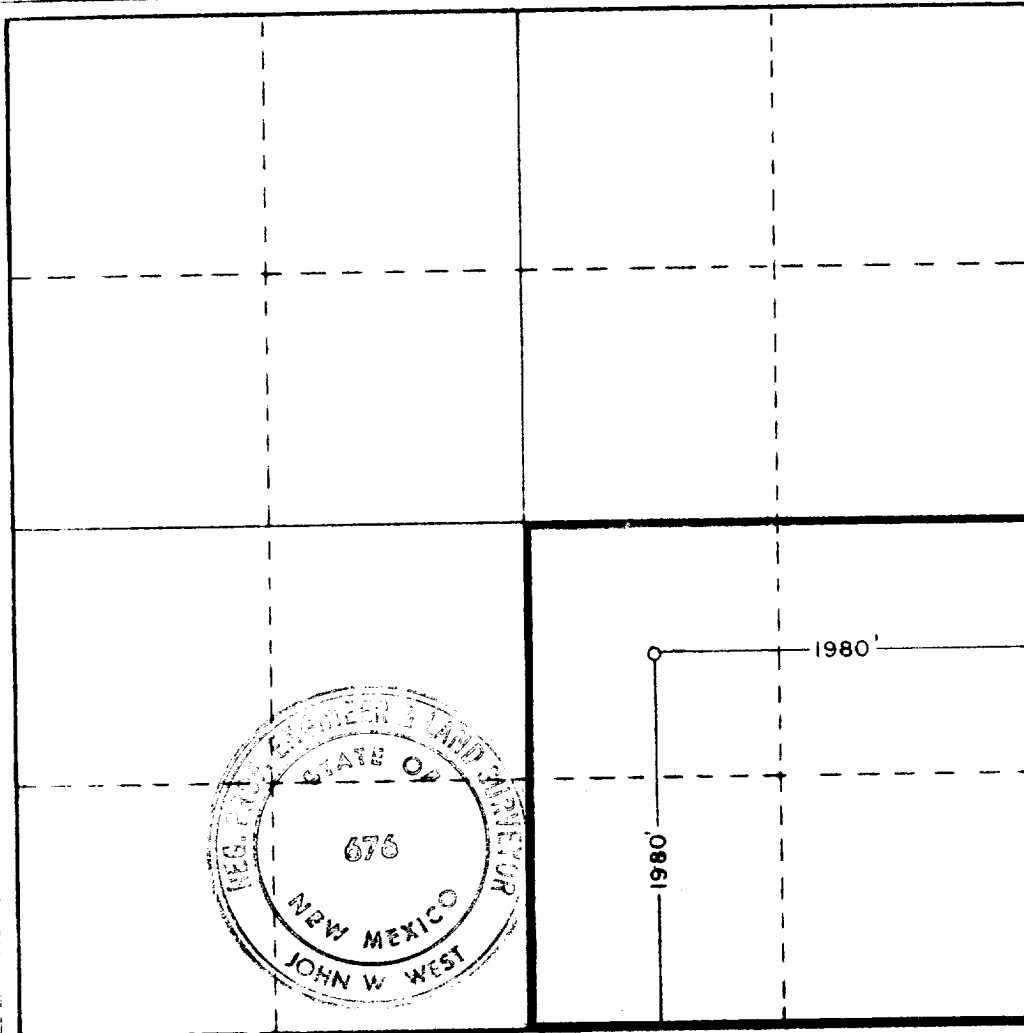
Operator Warrior, Inc. United Petro Search, Inc.		Lease State W.E. I 32		Well No. 3
Section Letter J	Section 32	Township 20 South	Range 36 East	County Lea
Actual Footage Location of Well: 1980 feet from the South line and 1980 feet from the East line				
Ground Level Elev. 3626.3	Producing Formation Queen	Pool Eumont Yates Seven Rivers	Dedicated Acreage: 160 Acres	

1. Outline the acreage dedicated to the subject well by colored pencil or hachure marks on the plat below.
2. If more than one lease is dedicated to the well, outline each and identify the ownership thereof (both as to working interest and royalty).
3. If more than one lease of different ownership is dedicated to the well, have the interests of all owners been consolidated by communitization, unitization, force-pooling, etc?

☐ Yes ☒ No If answer is "yes," type of consolidation _____

If answer is "no," list the owners and tract descriptions which have actually been consolidated. (Use reverse side of this form if necessary.) _____

No allowable will be assigned to the well until all interests have been consolidated (by communitization, unitization, forced-pooling, or otherwise) or until a non-standard unit, eliminating such interests, has been approved by the Commission.



CERTIFICATION

I hereby certify that the information contained herein is true and complete to the best of my knowledge and belief.

Mohammad Y. Merchant

Name
Mohammad Y. Merchant

Position
Consulting Engineer

Company
Warrior, Inc.

Date
October 16, 1980

I hereby certify that the well location shown on this plat was plotted from field notes of actual surveys made by me or under my supervision, and that the same is true and correct to the best of my knowledge and belief.

Date Surveyed
10-11-80

Registered Professional Engineer and/or Land Surveyor

John W. West

Certificate No. **JOHN W. WEST 676**
PATRICK A. ROMERO 6665
Ronald J. Eideen 3239

8 5/8-352-150 sx
5 1/2-3419-600 sx
2 3/8-3420

IP (Yates-Seven Rivers-Queen) OH 3419-3917 F 161 MCFGPD. Pot
based on 24 hr test thru 1/4 chk. GOR Dry; gty (NR); CP 700;
TP 620

F.R. 10-27-80
(Queen)

12-30-80

TD 3480; WOCU

2-11-81

TD 3480; SI

3-3-81

Drlg 3810

3-11-81

TD 3917; Tstg

Natural

5-25-81

TD 3917; Complete

LOG TOPS: Base Salt 1812, Yates 3410, Seven
Rivers 3604, Queen 3828

LOG RUN: GRNL

5-30-81

COMPLETION ISSUED

5-5-12 NM

IC 30-025-70513-80