

NEW MEXICO OIL CONSERVATION COMMISSION
WELL LOCATION AND ACREAGE DEDICATION PLAT

N. M. OIL CONS. COMMISSION Form C-102
Supersedes C-128
P. O. BOX 1980
HOBBS, NEW MEXICO 88240
Effective 1-1-65

All distances must be from the outer boundaries of the Section

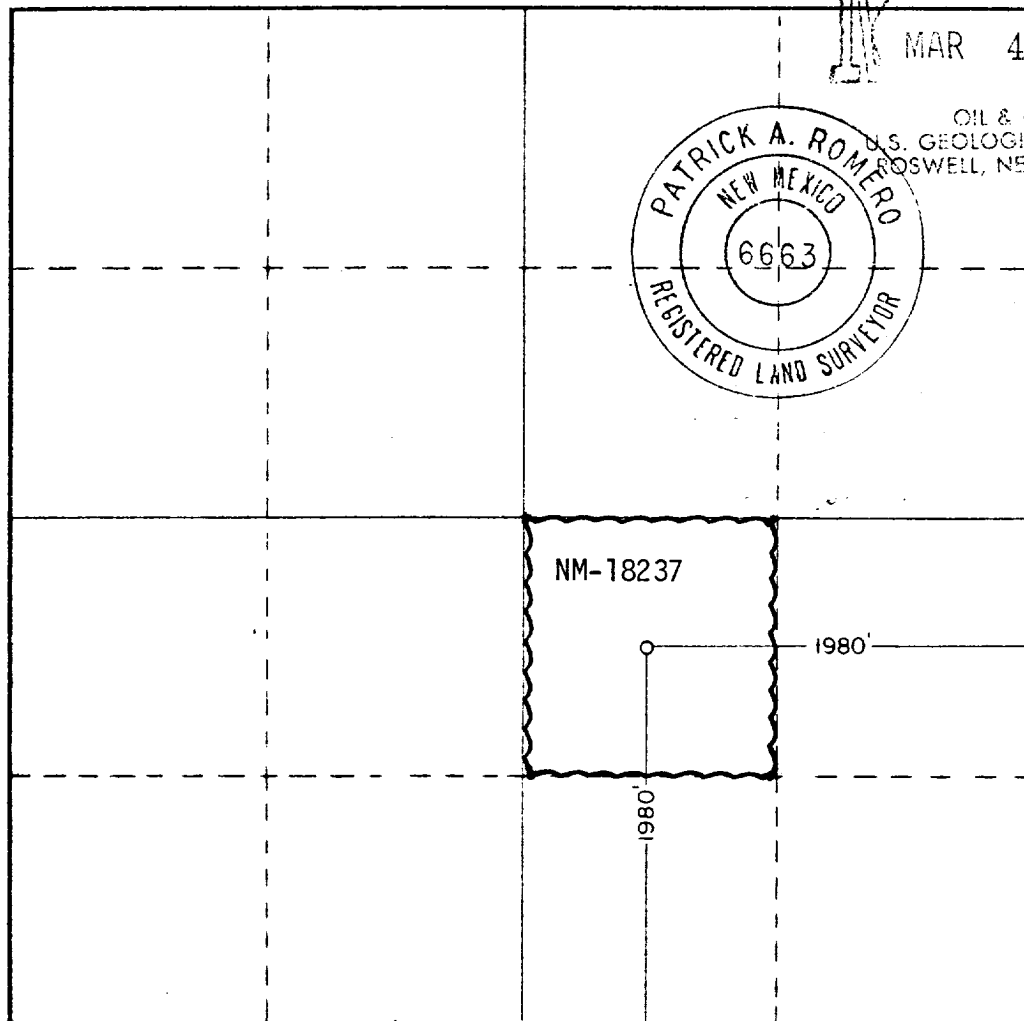
Operator AMOCO Production Co.			Lease Federal B.T. Gas Com			Well No. 1		
Unit Letter J K	Section 15	Township 20 South	Range 35 East	County Lea				
Actual Footage Location of Well:								
1980 feet from the South line and			1980 feet from the East line					
Ground Level Elev. 3696.4		Producing Formation Bone Springs		Pool Und. Bone Springs		Dedicated Acreage: 40 Acres		

1. Outline the acreage dedicated to the subject well by colored pencil or hachure marks on the plat below.
2. If more than one lease is dedicated to the well, outline each and identify the ownership thereof (both as to working interest and royalty).
3. If more than one lease of different ownership is dedicated to the well, have the interests of all owners been consolidated by communitization, unitization, force-pooling, etc?

☒ Yes ☐ No If answer is "yes," type of consolidation Communitization

If answer is "no," list the owners and tract descriptions which have actually been consolidated. (Use reverse side of this form if necessary.)

No allowable will be assigned to the well until all interests have been consolidated (by communitization, unitization, forced-pooling, or otherwise) or until a non-standard unit, eliminating such interests, has been approved by the Commission.



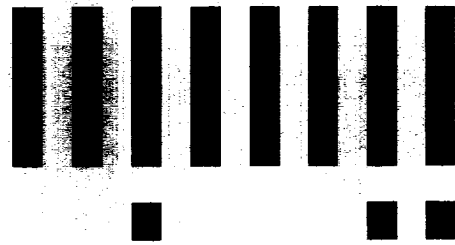
CERTIFICATION

I hereby certify that the information contained herein is true and complete to the best of my knowledge and belief.

Name Mark Truma
Position Assist. Admin. Analyst
Company Amoco Production Company
Date 2-1-82

I hereby certify that the well location shown on this plat was plotted from field notes of actual surveys made by me or under my supervision, and that the same is true and correct to the best of my knowledge and belief.

Date Surveyed Sept. 11, 1980
Registered Professional Engineer and/or Land Surveyor Patrick A. Romero
Certificate No. JOHN W. WEST 676
PATRICK A. ROMERO 6663
Ronald J. Eidson 3239



LTR



Job separation sheet

NEW MEXICO OIL CONSERVATION COMMISSION
WELL LOCATION AND ACREAGE DEDICATION PLAT

N.M. OIL CONS. COMMISSION-192
Supersedes C-128
Effective 1-1-85
P. O. BOX 1980
HOBBS, NEW MEXICO 88240

All distances must be from the outer boundaries of the Section

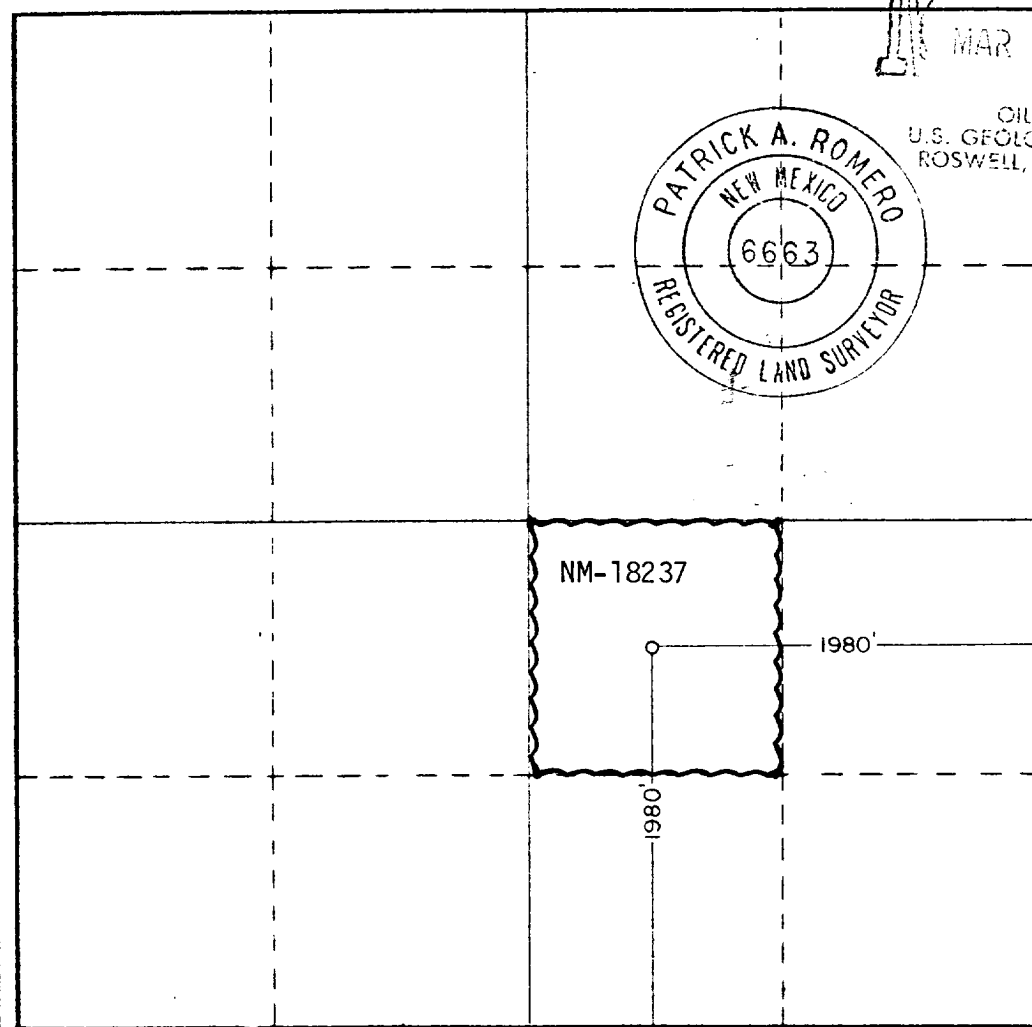
Operator AMOCO Production Co.		Lease Federal B.T. Gas Com		Well No. 1
Unit Letter J K	Section 15	Township 20 South	Range 35 East	County Lea
Actual Footage Location of Well:				
1980 feet from the South line and		1980 feet from the East line		
Ground Level Elev. 3696.4	Producing Formation Bone Springs	Pool Und. Bone Springs	Dedicated Acreage: 40 Acres	

1. Outline the acreage dedicated to the subject well by colored pencil or hatchure marks on the plat below.
2. If more than one lease is dedicated to the well, outline each and identify the ownership thereof (both as to working interest and royalty).
3. If more than one lease of different ownership is dedicated to the well, have the interests of all owners been consolidated by communitization, unitization, force-pooling, etc?

☒ Yes ☐ No If answer is "yes," type of consolidation Communitization

If answer is "no," list the owners and tract descriptions which have actually been consolidated. (Use reverse side of this form if necessary.)

No allowable will be assigned to the well until all interests have been consolidated (by communitization, unitization, forced-pooling, or otherwise) or until a non-standard unit, eliminating such interests, has been approved by the Commission.



RECEIVED
MAR 4 1982

CERTIFICATION

I hereby certify that the information contained herein is true and complete to the best of my knowledge and belief.

Name Mark Truma
Position Assist. Admin. Analyst
Company Amoco Production Company
Date 2-1-82

I hereby certify that the well location shown on this plat was plotted from field notes of actual surveys made by me or under my supervision, and that the same is true and correct to the best of my knowledge and belief.

Date Surveyed Sept. 11, 1980
Registered Professional Engineer and/or Land Surveyor
Patrick A. Romero
Certificate No. JOHN W. WEST 676
PATRICK A. ROMERO 6663
Ronald J. Eidson 3239