

OIL CONSERVATION DIVISION

STATE OF NEW MEXICO
ENERGY AND MINERALS DEPARTMENT

P. O. BOX 2088
SANTA FE, NEW MEXICO 87501

Form C-102
Revised 10-1-78

All distances must be from the outer boundaries of the Section.

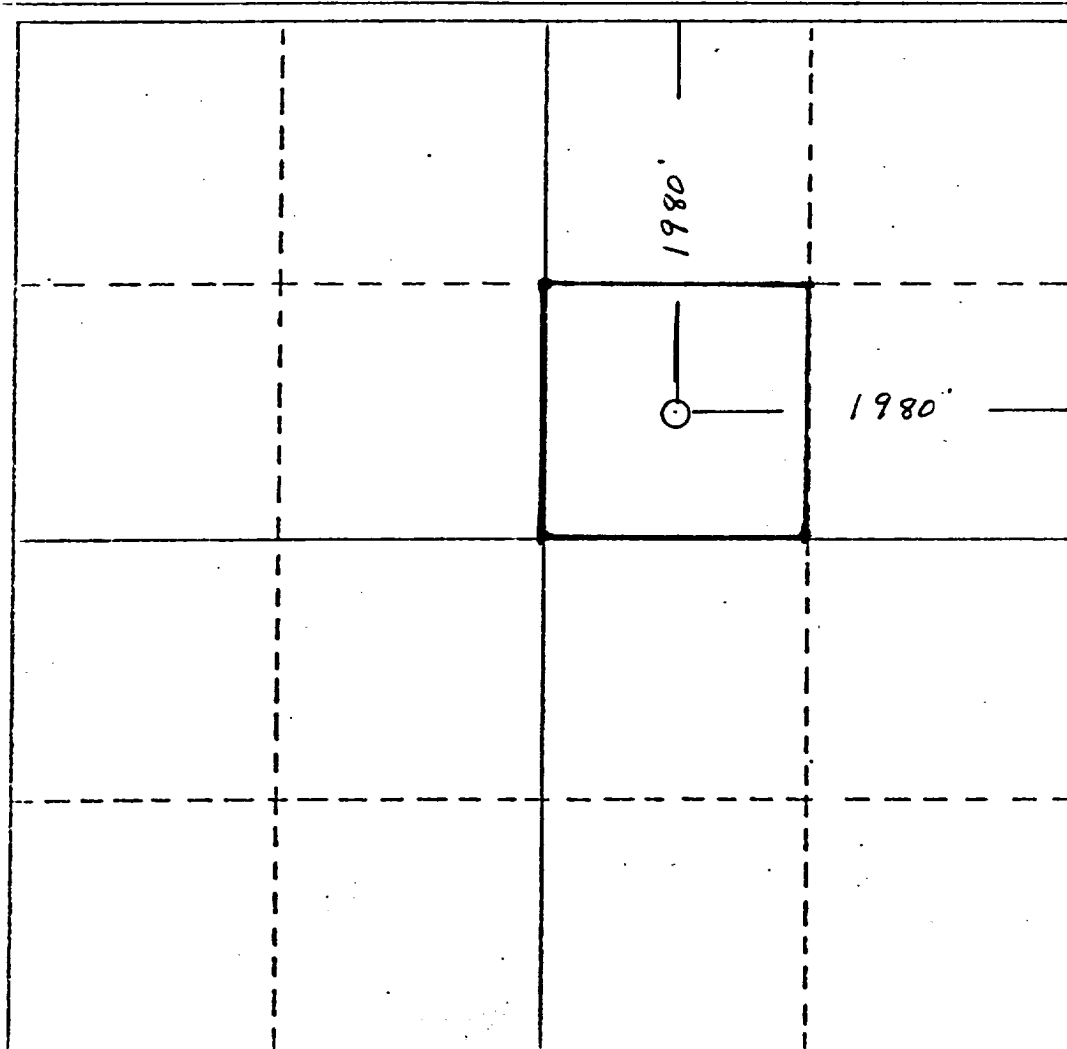
Operator Superior Oil Company, The			Lease Superior Gulf State Com.		Well No. 1
Unit Letter G	Section 32	Township 20-S	Range 34-E	County Lea	
Actual Footage Location of Well:					
1980 feet from the North		line and		1980 feet from the East	
Ground Level Elev. 3736	Producing Formation Atoka SR		Pool Undesignated		Dedicated Acreage: 40 Acres

1. Outline the acreage dedicated to the subject well by colored pencil or hachure marks on the plat below.
2. If more than one lease is dedicated to the well, outline each and identify the ownership thereof (both as to working interest and royalty).
3. If more than one lease of different ownership is dedicated to the well, have the interests of all owners been consolidated by communitization, unitization, force-pooling, etc?

☐ Yes ☐ No If answer is "yes," type of consolidation _____

If answer is "no," list the owners and tract descriptions which have actually been consolidated. (Use reverse side of this form if necessary.) _____

No allowable will be assigned to the well until all interests have been consolidated (by communitization, unitization, forced-pooling, or otherwise) or until a non-standard unit, eliminating such interests, has been approved by the Division.



CERTIFICATION

I hereby certify that the information contained herein is true and complete to the best of my knowledge and belief.

G. E. Tate

Name

G. E. Tate

Position

Division Operations Supt.

Company

The Superior Oil Company

Date

12-16-83

I hereby certify that the well location shown on this plat was plotted from field notes of actual surveys made by me or under my supervision, and that the same is true and correct to the best of my knowledge and belief.

January 16, 1981

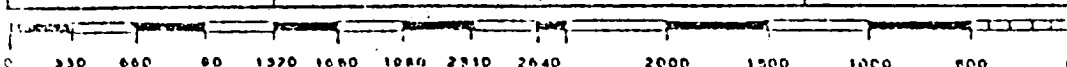
Date Surveyed

Registered Professional Engineer
and/or Land Surveyor

John W. West

Certificate No.

676





RECEIVED
DEC 19 1983
O.C.D.
HOBBS OFFICE