

NEW MEXICO OIL CONSERVATION COMMISSION WELL LOCATION AND ACREAGE DEDICATION AT

Supersedes C-128
Effective 1-1-73

All distances must be from the outer boundaries of the Section.

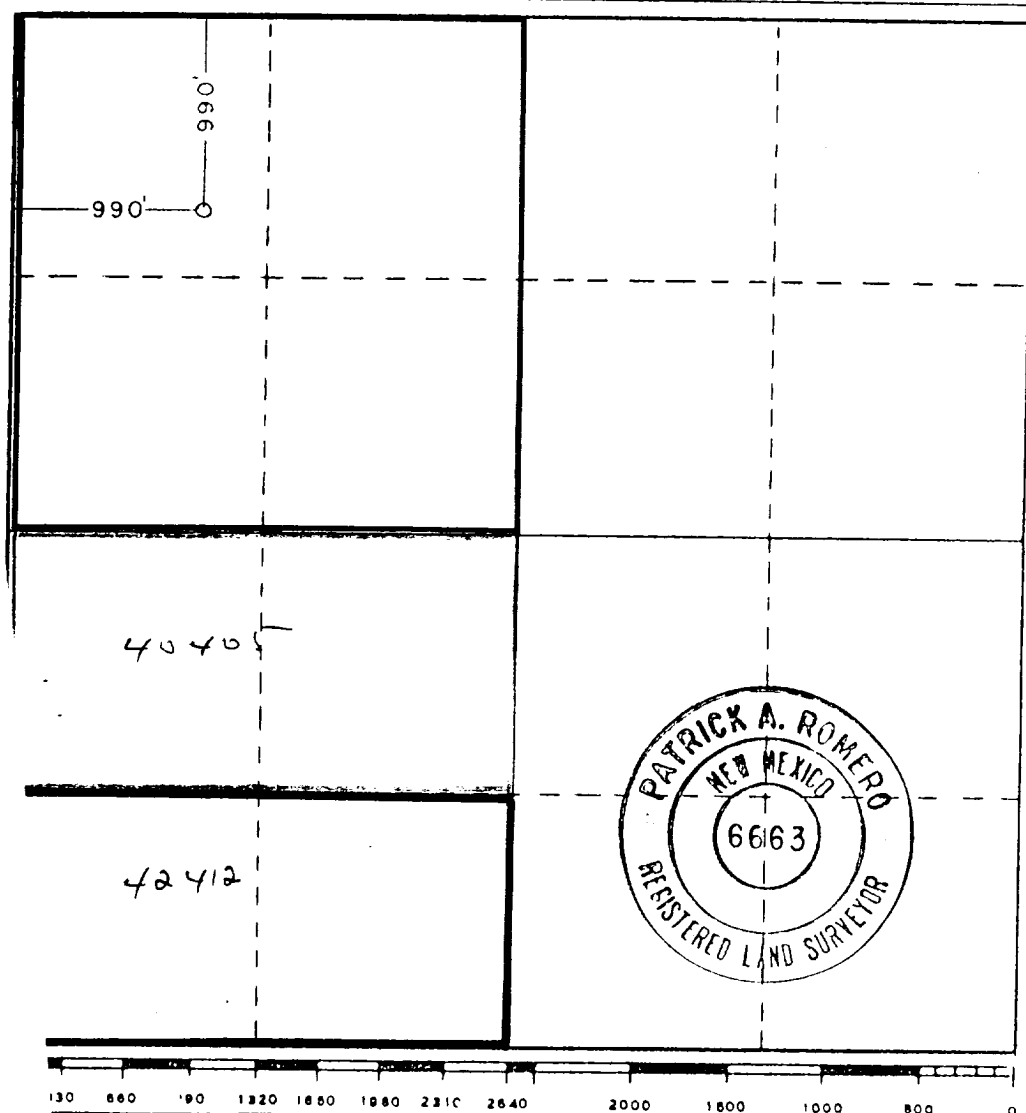
Operator Grace Petroleum Corp.			Lease East Smith Ranch Fed. Com.		Well No. 1
Unit Letter D	Section 12	Township 20South	Range 33East	County Lea	
Actual Footage Location of Well: 990 feet from the North line and 990 feet from the West line					
Ground Level Elev. 3592.6'	Producing Formation Morrow	Pool Undesignated	Dedicated Acreage: 320 Acres		

1. Outline the acreage dedicated to the subject well by colored pencil or hachure marks on the plat below.
2. If more than one lease is dedicated to the well, outline each and identify the ownership thereof (both as to working interest and royalty).
3. If more than one lease of different ownership is dedicated to the well, have the interests of all owners been consolidated by communitization, unitization, force-pooling, etc?

☐ Yes ☒ No If answer is "yes," type of consolidation Communitization in progress

If answer is "no," list the owners and tract descriptions which have actually been consolidated. (Use reverse side of this form if necessary.)

No allowable will be assigned to the well until all interests have been consolidated (by communitization, unitization, forced-pooling, or otherwise) or until a non-standard unit, eliminating such interests, has been approved by the Commission.



CERTIFICATION

I hereby certify that the information contained herein is true and complete to the best of my knowledge and belief.

Name
District Production Manager
Position
Grace Petroleum Corporation
Company
September 29, 1981
Date

I hereby certify that the well location shown on this plat was plotted from field notes of actual surveys made by me or under my supervision, and that the same is true and correct to the best of my knowledge and belief.

Date Surveyed
Sept. 12, 1981
Registered Professional Engineer and/or Land Surveyor
Certificate No. JOHN W. WEST 676
PATRICK A. ROMERO 6663
Ronald J. Eidson 3239

Grace Petroleum Corporation

160 acres (NW/4 Sec. 12)

W.I.: Grace Petroleum Corporation 75.0%
Supron Energy Corporation 18.611%
Southern Union Exploration 6.389%
100.000%

Royalty: 12.5% U.S. Gov't.
0.5% C.E. Strange & Wife
2.0% Bank of America, N.T. & S.A., Trustee of Charles E. Strange Trust No. 1, 1976
2.5% John C. Manning & Eva G. Manning, Trustees of the John C. Manning Trust

Grace Petroleum Corporation

80 acres (N/2, SW/4 Sec 12)

W.I.: Grace Petroleum Corp. 100%

Royalty: 12.5% U.S. Gov't.
3.0% N.W. Glade
2.0% Bullion Monarch Co.

Grace Petroleum Corporation

80 acres (S/2, SW/4 Sec. 12)

W.I.: Grace Petroleum Corp. 100%

Royalty: 12.5% U.S. Gov't.