

MEXICO OIL CONSERVATION COMMISSION
WELL LOCATION AND ACREAGE DEDICATION PLAT

Form 112
 Supersedes C-128
 Effective 1-1-85

All distances must be from the outer boundaries of the Section

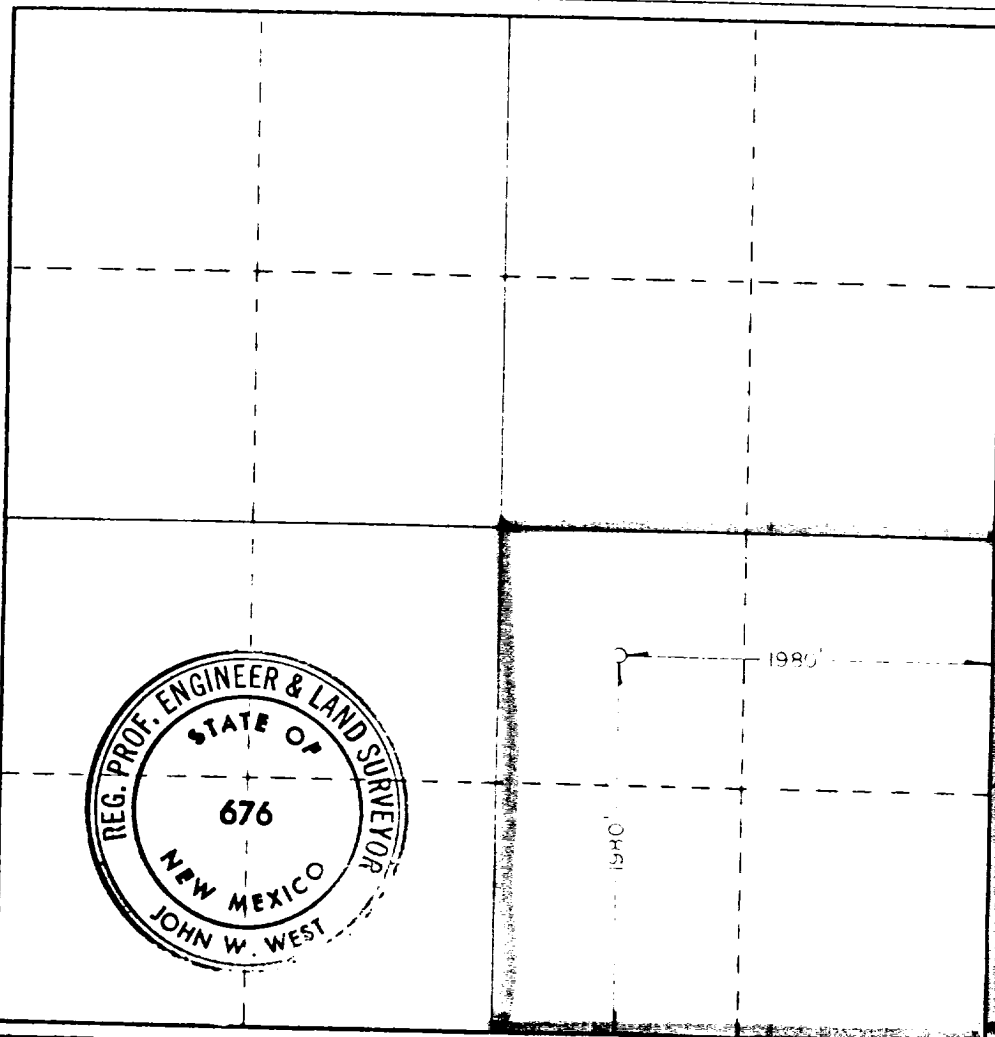
Operator Enron Oil & Gas Company --H-N-G-Oil-Company			Lease Sims		State 35	Well No. 2
Section J	35	Township 20 South	Range 35 East	County Lea		
Actual Acreage Dedication Acreage						
1980 feet from the south line and		1980 feet from the east line				
Ground Level Elev. 3682.5'	Producing Formation Wolfcamp		Pool Osuda, West A to Lea WC		Dedicated Acreage: 320 south 1/2	

- 1 Outline the acreage dedicated to the subject well by colored pencil or hatchure marks on the plat below.
- 2 If more than one lease is dedicated to the well, outline each and identify the ownership thereof (both as to working interest and royalty).
- 3 If more than one lease of different ownership is dedicated to the well, have the interests of all owners been consolidated by communitization, unitization, force-pooling, etc?

☐ Yes ☐ No If answer is "yes," type of consolidation _____

If answer is "no," list the owners and tract descriptions which have actually been consolidated. (Use reverse side of this form if necessary.) _____

No allowable will be assigned to the well until all interests have been consolidated (by communitization, unitization, forced-pooling, or otherwise) or until a non-standard unit, eliminating such interests, has been approved by the Commission.



CERTIFICATION

I hereby certify that the information contained herein is true and complete to the best of my knowledge and belief.

Betty Gildon

Name

Betty Gildon

Position

Regulatory Analyst

Company

Enron Oil & Gas Company

Date

1/16/92

I hereby certify that the well location shown on this plat was plotted from field notes of actual surveys made by me or under my supervision, and that the same is true and correct to the best of my knowledge and belief.

Date Surveyed

3-27-82

Registered Professional Engineer and/or Land Surveyor

John W. West

Certificate No. **JOHN W. WEST 676**
PATRICK A. ROMERO 6683
Ronald J. Eidson 3239