

NEW MEXICO OIL CONSERVATION COMMISSION
WELL LOCATION AND ACREAGE DEDICATION PLAT

Form C-102
Supersedes C-128
Effective 1-1-65

All distances must be from the outer boundaries of the Section

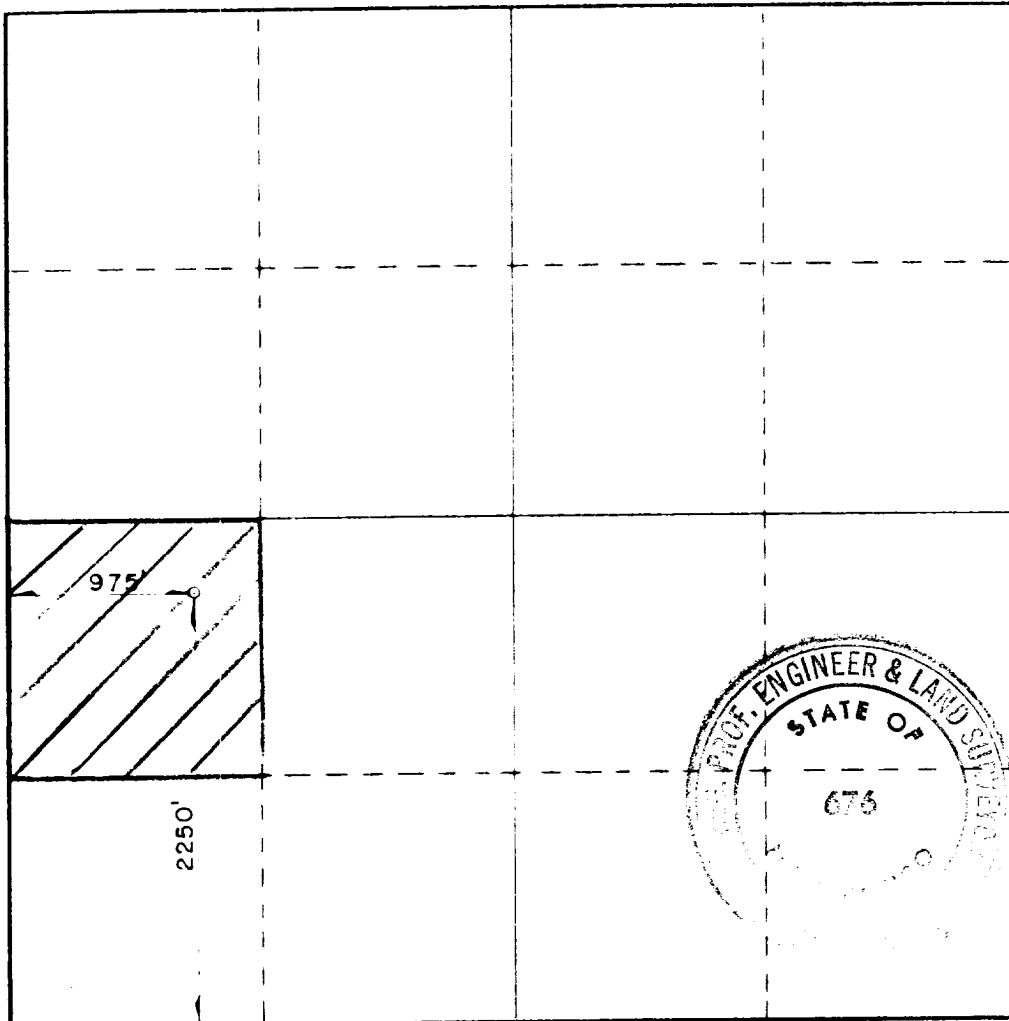
Operator ANADARKO PRODUCTION			Lease TEAS YATES UNIT		Well No. 8-4
Section Letter L	Section 13	Township 20S	Range 33E	County LEA	
Actual Plotage Location of Well: 2250.5 feet from the SOUTH line and 975 feet from the WEST line					
Ground Level Elev. 3609.9	Producing Formation Yates		Pool Teas	Section Acres 40 Acres	

- Outline the acreage dedicated to the subject well by colored pencil or hatchure marks on the plat below.
- If more than one lease is dedicated to the well, outline each and identify the ownership thereof (both as to working interest and royalty).
- If more than one lease of different ownership is dedicated to the well, have the interests of all owners been consolidated by communitization, unitization, force-pooling, etc?

☒ Yes ☐ No If answer is "yes," type of consolidation unitization

If answer is "no," list the owners and tract descriptions which have actually been consolidated (Use reverse side of this form if necessary.) _____

No allowable will be assigned to the well until all interests have been consolidated (by communitization, unitization, forced-pooling, or otherwise) or until a non-standard unit, eliminating such interests, has been approved by the Commission.



CERTIFICATION

I hereby certify that the information contained herein is true and complete to the best of my knowledge and belief.

Signature: Mark Fesmire
Position: Senior Production Engineer
Company: Anadarko Production Company
Date: October 26, 1982

I hereby certify that the well location shown on this plat was plotted from field notes of actual surveys made by me or under my supervision, and that the same is true and correct to the best of my knowledge and belief.

Date Surveyed: 10/14/82
Registered Professional Engineer and/or Land Surveyor

Signature: John W. West
Certificate No. JOHN W. WEST 676
PATRICK A. ROMERO 6663
Ronald J. Eidson 3239

0 330 660 990 1320 1650 1980 2310 2640 2970 3300 3630 3960 4290 4620 4950 5280 5610 5940 6270 6600