

**NEW MEXICO OIL CONSERVATION COMMISSION
WELL LOCATION AND ACREAGE DEDICATION PLAT**

Form C-102
Supersedes C-128
Effective 1-1-65

All distances must be from the outer boundaries of the Section.

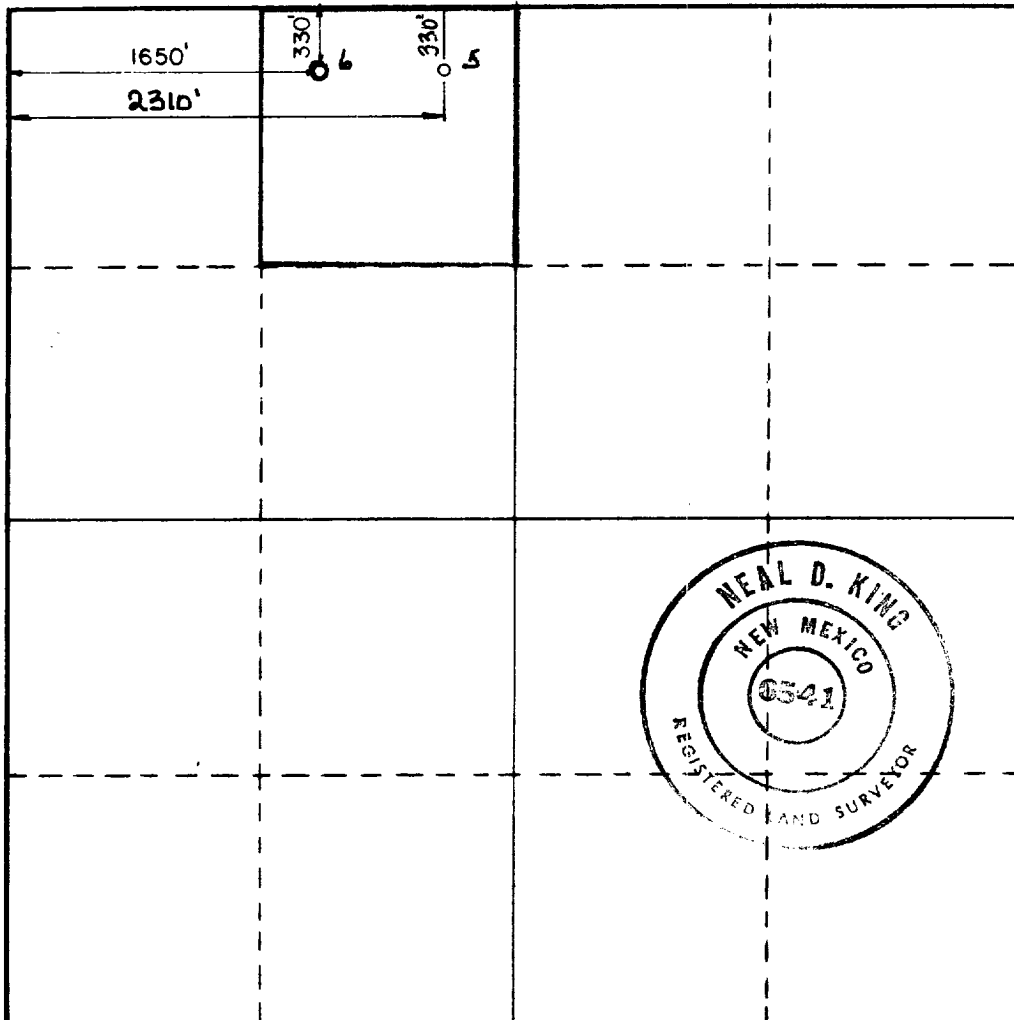
Operator MINERALS, INC.			Lease BASS STATE		Well No. 6
Unit Letter C	Section 18	Township 20S	Range 33E	County Lea	
Actual Footage Location of Well: 330 feet from the North line and 1650 feet from the West line					
Ground Level Elev. 3523.6	Producing Formation Yates		Pool Salt Lake Yates		Dedicated Acreage: 40 Acres

1. Outline the acreage dedicated to the subject well by colored pencil or hachure marks on the plat below.
2. If more than one lease is dedicated to the well, outline each and identify the ownership thereof (both as to working interest and royalty).
3. If more than one lease of different ownership is dedicated to the well, have the interests of all owners been consolidated by communitization, unitization, force-pooling, etc?

☐ Yes ☐ No If answer is "yes," type of consolidation _____

If answer is "no," list the owners and tract descriptions which have actually been consolidated. (Use reverse side of this form if necessary.) _____

No allowable will be assigned to the well until all interests have been consolidated (by communitization, unitization, forced-pooling, or otherwise) or until a non-standard unit, eliminating such interests, has been approved by the Commission.



CERTIFICATION

I hereby certify that the information contained herein is true and complete to the best of my knowledge and belief.

Al Klaar

Name
Al Klaar

Position
Vice President, Engineering

Company
Minerals, Inc.

Date
1-13-83

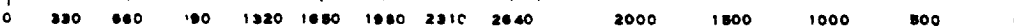
I hereby certify that the well location shown on this plat was plotted from field notes of actual surveys made by me or under my supervision, and that the same is true and correct to the best of my knowledge and belief.

Date Surveyed
January 11, 1983

Registered Professional Engineer
and/or Land Surveyor

Neal D. King

Certificate No. **6541**



RECEIVED
JAN 14 1983
O.C.D.
HOBBS OFFICE

173