

NEW MEXICO OIL CONSERVATION COMMISSION
WELL LOCATION AND ACREAGE DEDICATION PLAT

Form O-102
Supersedes C-128
Effective 1-1-65

All distances must be from the outer boundaries of the Section

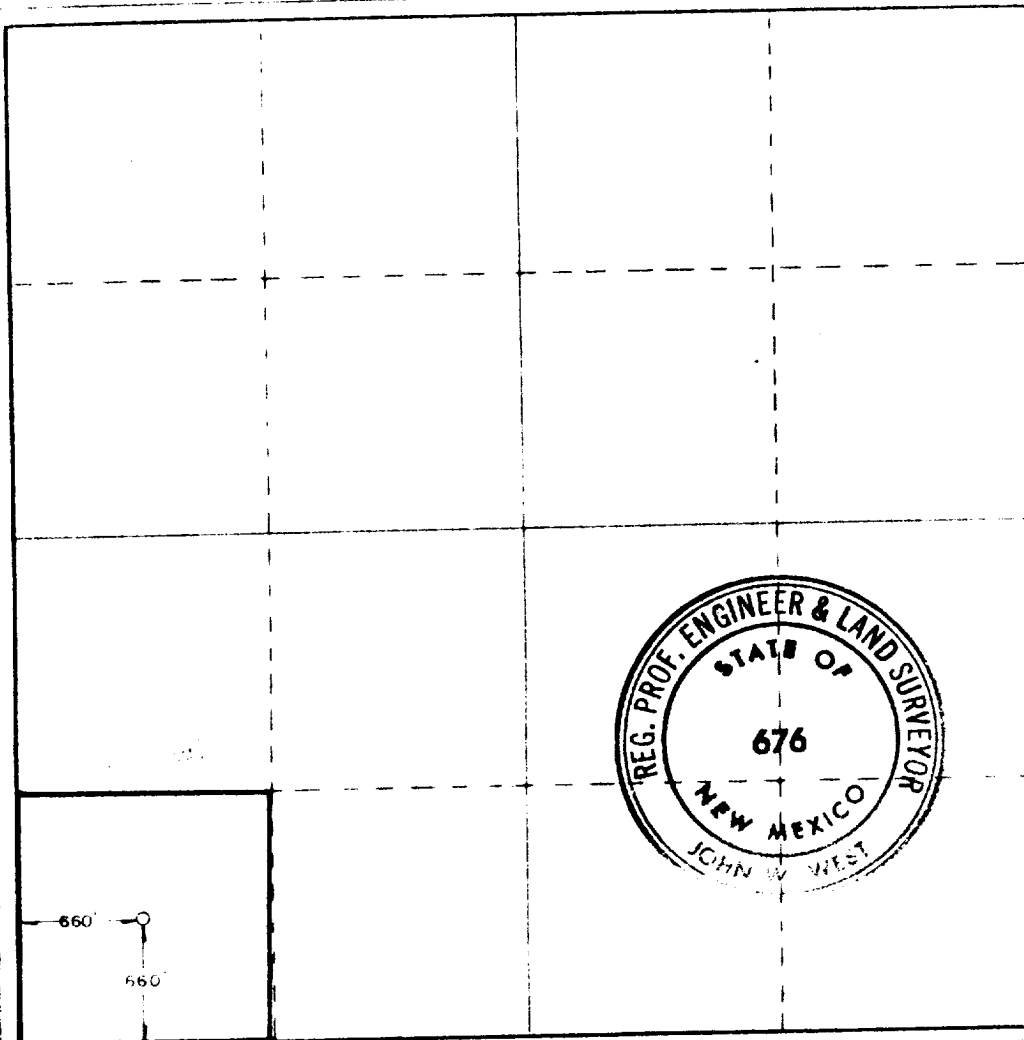
Operator Gulf Oil Corp.		Lease C. H. Kyte		Acres 3
Section Letter M	Section 7	Township 19 South	Range 37 East	County Lea
Acreage Location of Well: 660 feet from the south line and 660 feet from the west line				
Ground Level Elev 3715.2'	Producing Formation <i>Gray, SA</i> Eunice Monument		Pool Eunice Monument	Well Head Elevation 3880.40

- 1 Outline the acreage dedicated to the subject well by colored pencil or hatchure marks on the plat below.
- 2 If more than one lease is dedicated to the well, outline each and identify the ownership thereof (both as to working interest and royalty)
- 3 If more than one lease of different ownership is dedicated to the well, have the interests of all owners been consolidated by communitization, unitization, force-pooling, etc?

Yes ☐ No ☐ If answer is "yes," type of consolidation _____

If answer is "no" list the owners and tract descriptions which have actually been consolidated (Use reverse side of this form if necessary) _____

No allowable will be assigned to the well until all interests have been consolidated (by communitization, unitization, forced-pooling, or otherwise) or until a non-standard unit, eliminating such interests, has been approved by the Commission.



CERTIFICATION

I hereby certify that the information contained herein is true and complete to the best of my knowledge and belief.

R. C. Anderson

R. C. Anderson

Area Production Manager

Gulf Oil Corporation

3-15-83

I hereby certify that the well location shown on this plat was plotted from field notes of actual surveys made by me or under my supervision, and that the same is true and correct to the best of my knowledge and belief.

March 3, 1983

Registered Professional Land Surveyor

John W. West

Certificate No.

John W. West, NM L.S. 676

RECEIVED

MAR 16 1983

O.C.D.
HOBBS OFFICE