

30-025-28306

NO. OF COPIES RECEIVED	
DISTRIBUTION	
SANTA FE	
FILE	
U.S.G.S.	
LAND OFFICE	
OPERATOR	

NEW MEXICO OIL CONSERVATION COMMISSION

Form C-101
Revised 1-65

5A. Indicate Type of Lease	
STATE <input checked="" type="checkbox"/>	FEE <input type="checkbox"/>
5. State Oil & Gas Lease No.	
A-1212-1	
7. Unit Agreement Name	
8. Farm or Lease Name	
South Hobbs(GSA)Ut.Coop	
9. Well No.	
3	
10. Field and Pool, or Wildcat	
Hobbs GSA	
12. Country	
Lea	
19. Proposed Depth	19A. Formation
4300	San Andres
20. Rotary or C.T.	
Rotary	
21. Kind & Status Plug. Bond	22. Approx. Date Work will start
Blanket-on-file	9-1-83

APPLICATION FOR PERMIT TO DRILL, DEEPEN, OR PLUG BACK

14. Type of Work	
b. Type of Well DRILL <input checked="" type="checkbox"/> DEEPEN <input type="checkbox"/> PLUG BACK <input type="checkbox"/>	
OIL WELL <input type="checkbox"/> GAS WELL <input type="checkbox"/> OTHER Injection Well SINGLE ZONE <input type="checkbox"/> MULTIPLE ZONE <input type="checkbox"/>	
2. Name of Operator	
Amoco Production Company	
3. Address of Operator	
P. O. Box 68, Hobbs, New Mexico 88240	
4. Location of Well	
SL/BHL	UNIT LETTER C LOCATED 645/25 FEET FROM THE North LINE
AND 2045/1330	FEET FROM THE West LINE OF SEC. 4 TWP. 19-S RGE. 38-E NMPM
19. Proposed Depth	
4300	
19A. Formation	
San Andres	
20. Rotary or C.T.	
Rotary	
21. Kind & Status Plug. Bond	
Blanket-on-file	
22. Approx. Date Work will start	
9-1-83	

PROPOSED CASING AND CEMENT PROGRAM

SIZE OF HOLE	SIZE OF CASING	WEIGHT PER FOOT	SETTING DEPTH	SACKS OF CEMENT	EST. TOP
11" or 12 1/4"	8-5/8"	24#	1600'	Circulate to surface	
7-7/8"	5-1/2"	15.50#	4300'	Circulate to surface	

Propose to directionally drill and equip well in the San Andres formation. After reaching TD, logs will be run and evaluated. Perforate and/or stimulate as necessary in establishing injectio

Order No. R-4943-A issued 8-4-83.

Mud Program: 0-1600' Native mud.
1600'-4300' Brine with minimum properties for safe hole conditions.

BOP Diagram Attached.

APPROVAL VALID FOR 180 DAYS
PERMIT EXPIRES 2/12/84
UNLESS DRILLING UNDERWAY

0+5-NMOCD,H 1-HOU, R.E.Ogden,Rm 21.150 1-F.J.Nash, HOU, Rm. 4.206 1-CMH 1-Texaco 1-Sun.

IN ABOVE SPACE DESCRIBE PROPOSED PROGRAM: IF PROPOSAL IS TO DEEPEN OR PLUG BACK, GIVE DATA ON PRESENT PRODUCTIVE ZONE AND PROPOSED NEW PRODUCTIVE ZONE. GIVE BLOWOUT PREVENTER PROGRAM, IF ANY.

hereby certify that the information above is true and complete to the best of my knowledge and belief.

Signed Charles M. Herring Title Administrative Analyst Date 8-10-83

(This space for State Use)

ORIGINAL SIGNED BY JERRY SEXTON
DISTRICT I SUPERVISOR

APPROVED BY _____ TITLE _____ DATE AUG 11 1983

CONDITIONS OF APPROVAL, IF ANY:

RECEIVED
AUG 11 1988
C.C.D.
HOBBS OFFICE

NE EXICO OIL CONSERVATION COMMISSION
WELL LOCATION AND ACREAGE DEDICATION PLAT

Form C-102
Supersedes C-128
Effective 1-1-65

All distances must be from the outer boundaries of the Section

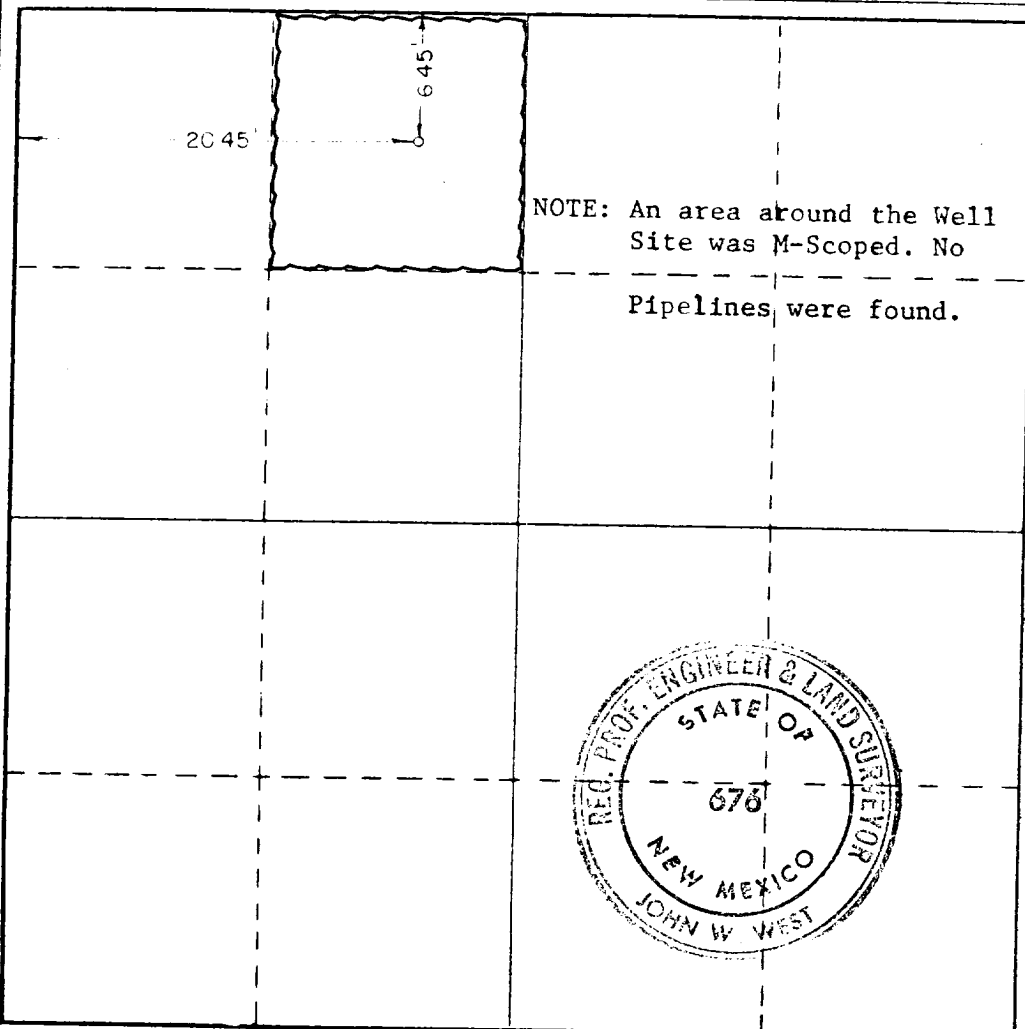
Operator Amoco Production Company			Lease South Hobbs/GSA/Unit Coop		Well No. 3
Unit Letter C	Section 4	Township 19 South	Range 38 East	County Lea County	
Actual Footage Location of Well: 2045 feet from the West line and 645 feet from the North line					
Ground Level Elev. 3623.9	Producing Formation San Andres		Pool Hobbs GSA	Dedicated Acreage: 40 Acres	

1. Outline the acreage dedicated to the subject well by colored pencil or hatchure marks on the plat below.
2. If more than one lease is dedicated to the well, outline each and identify the ownership thereof (both as to working interest and royalty).
3. If more than one lease of different ownership is dedicated to the well, have the interests of all owners been consolidated by communitization, unitization, force-pooling, etc?

☐ Yes ☐ No If answer is "yes," type of consolidation _____

If answer is "no," list the owners and tract descriptions which have actually been consolidated. (Use reverse side of this form if necessary.) _____

No allowable will be assigned to the well until all interests have been consolidated (by communitization, unitization, forced-pooling, or otherwise) or until a non-standard unit, eliminating such interests, has been approved by the Commission.



CERTIFICATION

I hereby certify that the information contained herein is true and complete to the best of my knowledge and belief.

Charles M. Lerry
Position
Administrative Analyst

Company
Amoco Production Company

Date
8-10-83

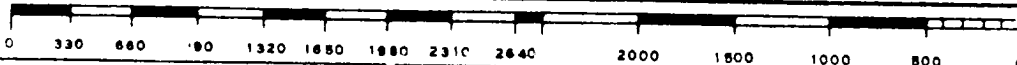
I hereby certify that the well location shown on this plat was plotted from field notes of actual surveys made by me or under my supervision, and that the same is true and correct to the best of my knowledge and belief.

Date Surveyed
June 9, 1983

Registered Professional Engineer and/or Land Surveyor

John W. West
Certificate No.

JOHN W. WEST NO. 676

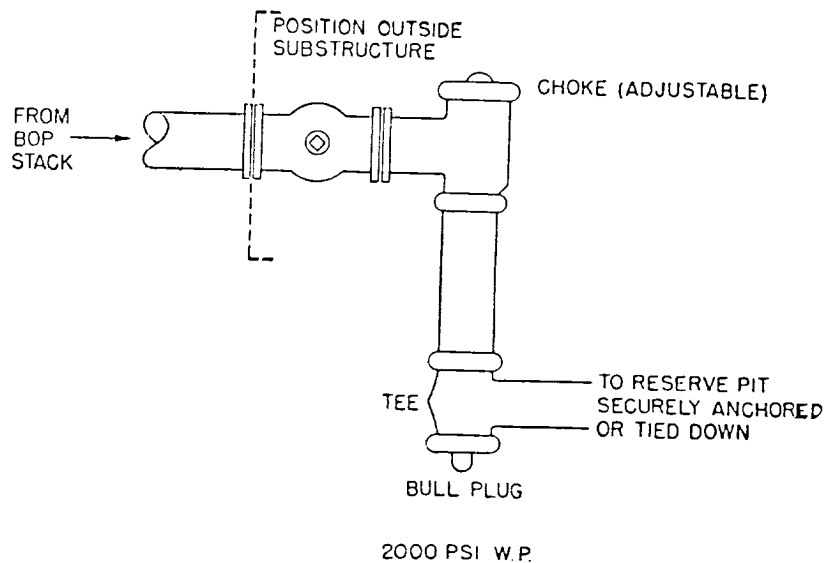
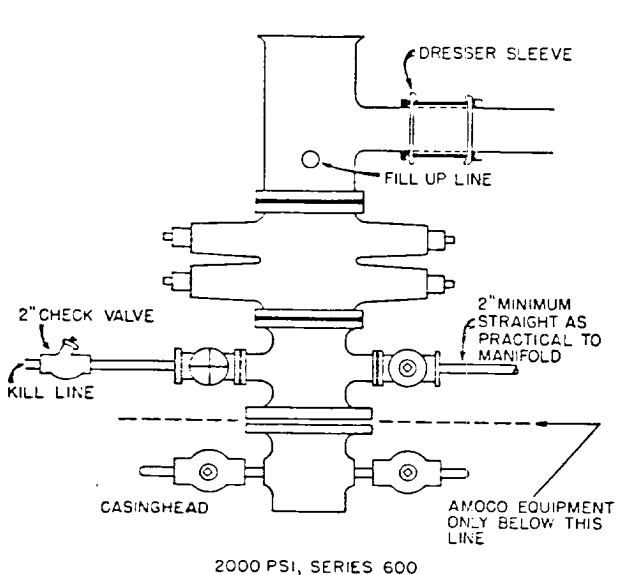


STANDARD 2000 PSI W.P. BOP STACK

1. Blow-out preventers may be manually operated.
2. All equipment must be in good condition, 2,000 psi W.P. (4,000 psi test) minimum.
3. Bell nipple above blow-out preventer shall be same size as casing being drilled through.
4. Kelly cock to be installed on kelly.
5. Full opening safety valve 2,000 psi w.p. (4,000 psi test) minimum must be available on rig floor at all times with proper connection or subs to fit any tool joint in string.
6. Spool or cross may be eliminated if connections are available in the lower part of the blow-out preventer body.
7. Double or space saver type preventers may be used in lieu of two single preventers.
8. BOP rams to be installed as follows:

Top preventer	-	Drill pipe or casing rams
Bottom preventer	-	Blind rams

*Amoco District Superintendent may reverse location of rams.
9. Extensions and hand wheels to be installed and braced at all times.
10. Manifold valves may be gate or plug metal to metal seal 2" minimum.



RECEIVED
AUG 11 1983
O.C.D.
HOBBS OFFICE

