

STATE OF NEW MEXICO  
ENERGY AND MINERALS DEPARTMENT

IL CONSERVATION DIVISION  
P. O. BOX 2088  
SANTA FE, NEW MEXICO 87501

Form C-101  
Revised 10-1-78

NO. OF COPIES RECEIVED	
DISTRIBUTION	
SANTA FE	
FILE	
U.S.G.S.	
LAND OFFICE	
OPERATOR	

5A. Indicate Type of Lease  
STATE ☐ FEE ☒

5. State Oil & Gas Lease No.  
1

APPLICATION FOR PERMIT TO DRILL, DEEPEN, OR PLUG BACK

1a. Type of Work DRILL <input checked="" type="checkbox"/> DEEPEN <input type="checkbox"/> PLUG BACK <input type="checkbox"/>		7. Unit Agreement Name	
b. Type of Well OIL WELL <input checked="" type="checkbox"/> GAS WELL <input type="checkbox"/> OTHER <input type="checkbox"/> SINGLE ZONE <input checked="" type="checkbox"/> MULTIPLE ZONE <input type="checkbox"/>		8. Farm or Lease Name South Hobbs (GSA) Unit	
2. Name of Operator Amoco Production Company		9. Well No. 146	
3. Address of Operator P. O. Box 68, Hobbs, New Mexico 88240		10. Field and Pool, or Wildcat Hobbs GSA	
4. Location of Well UNIT LETTER D LOCATED 75/10 FEET FROM THE North LINE SL/BHL AND 1205/1310 FEET FROM THE West LINE OF SEC. 9 TWP. 19-S RGE. 38-E NMPM		12. County Lea	
19. Proposed Depth 4500'		19A. Formation San Andres	20. Rotary or C.T. Rotary
21. Elevations (show whether DF, KI, etc.) 3600.2' GL	21A. Kind & Status Plug. Bond Blanket-on-file	21B. Drilling Contractor	22. Approx. Date Work will start

PROPOSED CASING AND CEMENT PROGRAM

SIZE OF HOLE	SIZE OF CASING	WEIGHT PER FOOT	SETTING DEPTH	SACKS OF CEMENT	EST. TOP
11" or 12-1/4"	8-5/8"	24#	1600'	Circulate	Surface
7-7/8"	5-1/2"	15.5#	4500'	Circulate	Surface

Propose to drill and equip well in the San Andres formation. After reaching TD, logs will be run and evaluated. Perforate and/or stimulate as necessary in attempting commercial production.

BOP Diagram attached.  
NMOCD Order No. R-4934-B

Mud Program: 0 - 1600'  
1600' - 4300'

Fresh water and native muds.  
Brine-with minimum properties for safe hole conditions.

O+5-NMOCD, H 1-HOU R.E. Ogden, Rm 21.150 1-F. J. Nash, HOU Rm. 4.206 1-CMH  
1-Texaco 1-Sun 1-Petro Lewis 1-Shell

IN ABOVE SPACE DESCRIBE PROPOSED PROGRAM; IF PROPOSAL IS TO DEEPEN OR PLUG BACK, GIVE DATA ON PRESENT PRODUCTIVE ZONE AND PROPOSED NEW PRODUCTIVE ZONE. GIVE BLOWOUT PREVENTER PROGRAM, IF ANY.

I hereby certify that the information above is true and complete to the best of my knowledge and belief.

Signed Charles M. Herring Title Administrative Analyst Date 8-30-83

(This space for State Use)

ORIGINAL SIGNED BY JERRY SEXTON

APPROVED BY DISTRICT 1 SUPERVISOR TITLE DATE

CONDITIONS OF APPROVAL, IF ANY:

AUG 31 1983

APPROVAL VALID FOR 180 DAYS  
3/1/84

NEW MEXICO OIL CONSERVATION COMMISSION  
 WELL LOCATION AND ACREAGE DEDICATION PLAT

Form C-102  
 Supersedes C-128  
 Effective 1-1-65

All distances must be from the outer boundaries of the Section

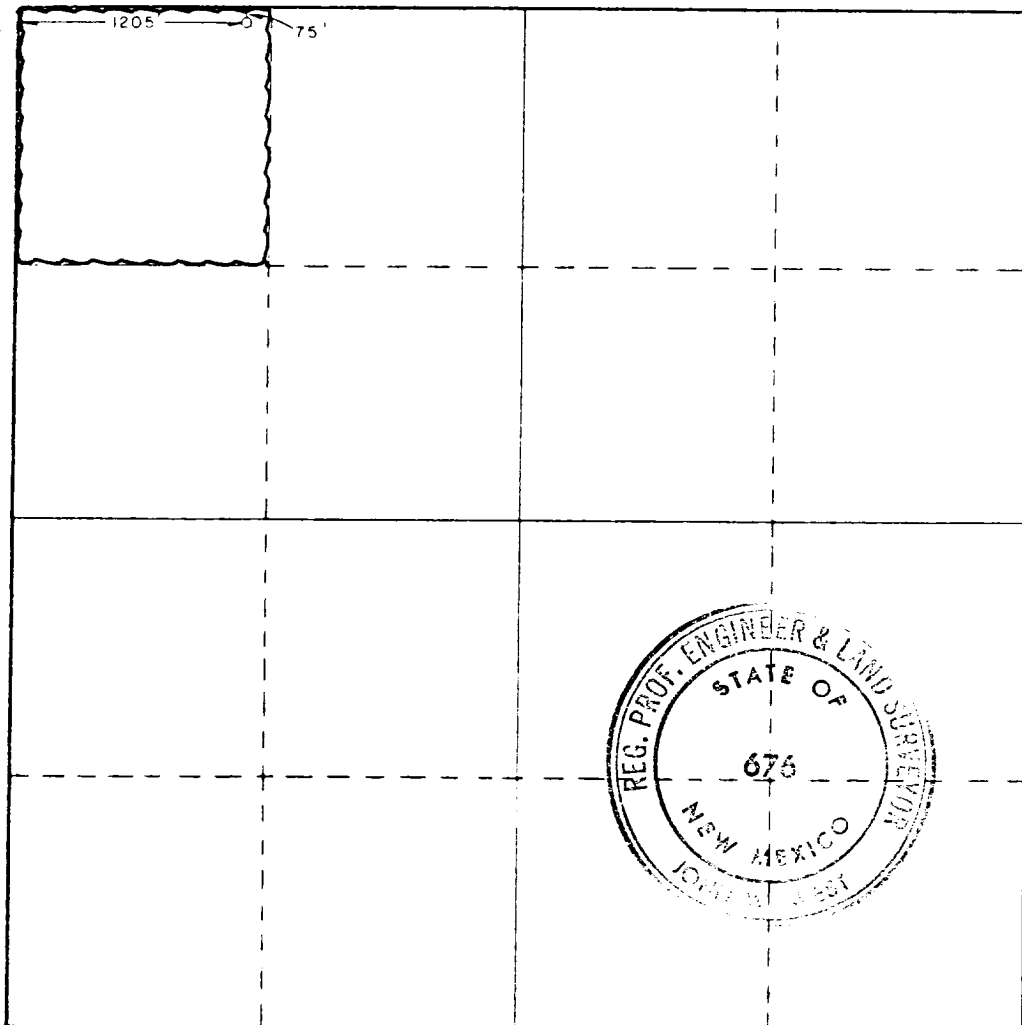
Operator <b>Amoco Production Company</b>			Lease <b>South Hobbs Grayburg San Andres Unit</b>		Well No. <b>146</b>
Unit Letter <b>D</b>	Section <b>9</b>	Township <b>19 South</b>	Range <b>38 East</b>	County <b>Lea</b>	
Actual Footage Location of Well: <b>75</b> feet from the <b>north</b> line and <b>1205</b> feet from the <b>west</b> line					
Ground Level Elev. <b>3600.2'</b>	Producing Formation <b>San Andres</b>		Pool <b>Hobbs GSA</b>	Dedicated Acreage: <b>40</b> Acres	

- Outline the acreage dedicated to the subject well by colored pencil or hatchure marks on the plat below.
- If more than one lease is dedicated to the well, outline each and identify the ownership thereof (both as to working interest and royalty).
- If more than one lease of different ownership is dedicated to the well, have the interests of all owners been consolidated by communitization, unitization, force-pooling, etc?

☐ Yes ☐ No If answer is "yes," type of consolidation \_\_\_\_\_

If answer is "no," list the owners and tract descriptions which have actually been consolidated. (Use reverse side of this form if necessary.) \_\_\_\_\_

No allowable will be assigned to the well until all interests have been consolidated (by communitization, unitization, forced-pooling, or otherwise) or until a non-standard unit, eliminating such interests, has been approved by the Commission.



CERTIFICATION

I hereby certify that the information contained herein is true and complete to the best of my knowledge and belief.

*Charles M. Herring*  
 Position  
**Administrative Analyst**

Company  
**Amoco Production Company**

Date  
**8-30-83**

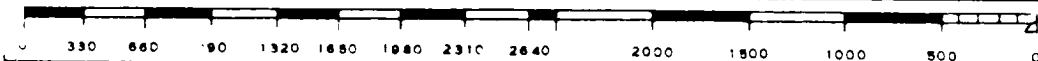
I hereby certify that the well location shown on this plat was plotted from field notes of actual surveys made by me or under my supervision, and that the same is true and correct to the best of my knowledge and belief.

Date Surveyed  
**June 25, 1983**

Registered Professional Engineer and/or Land Surveyor

*John W. West*

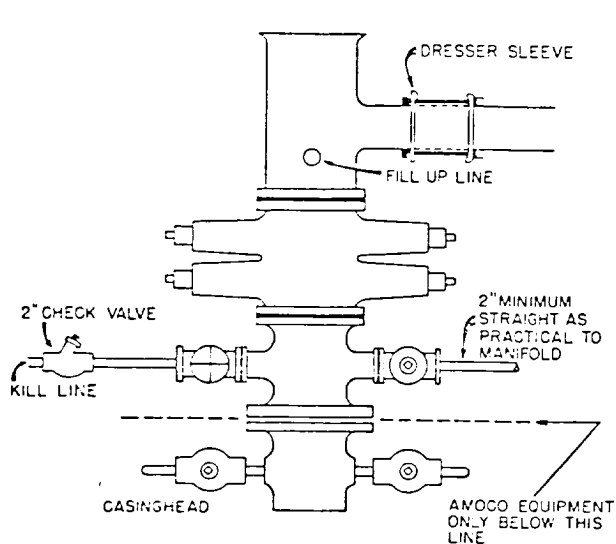
Certificate No **JOHN W. WEST, 676**  
**RONALD J. EIDSON, 3239**



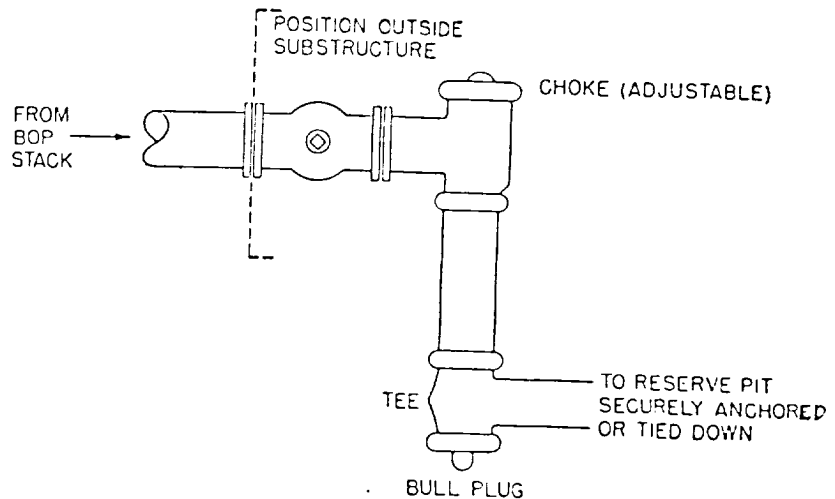
# STANDARD 2000 PSI W.P. BOP STACK

1. Blow-out preventers may be manually operated.
2. All equipment must be in good condition, 2,000 psi W.P. (4,000 psi test) minimum.
3. Bell nipple above blow-out preventer shall be same size as casing being drilled through.
4. Kelly cock to be installed on kelly.
5. Full opening safety valve 2,000 psi w.p. (4,000 psi test) minimum must be available on rig floor at all times with proper connection or subs to fit any tool joint in string.
6. Spool or cross may be eliminated if connections are available in the lower part of the blow-out preventer body.
7. Double or space saver type preventers may be used in lieu of two single preventers.
8. BOP rams to be installed as follows:
  - Top preventer - Drill pipe or casing rams
  - Bottom preventer - Blind rams

\*Amoco District Superintendent may reverse location of rams.
9. Extensions and hand wheels to be installed and braced at all times.
10. Manifold valves may be gate or plug metal to metal seal 2" minimum.



2000 PSI, SERIES 600



2000 PSI W.P.