

NO. OF COPIES RECEIVED	
DISTRIBUTION	
SANTA FE	
FILE	
U.S.G.S.	
LAND OFFICE	
OPERATOR	

5A. Indicate Type of Lease
STATE <input checked="" type="checkbox"/> FEE <input type="checkbox"/>
5. State Oil & Gas Lease No.
A-1212-1

APPLICATION FOR PERMIT TO DRILL, DEEPEN, OR PLUG BACK

7. Unit Agreement Name

8. Farm or Lease Name
South Hobbs (GSA) Unit9. Well No.
17210. Field and Pool, or Wildcat
Hobbs GSA12. County
Lea20. Rotary or C.T.
Rotary22. Approx. Date Work will start
As Soon as possible

1a. Type of Work	DRILL <input checked="" type="checkbox"/>	DEEPEN <input type="checkbox"/>	PLUG BACK <input type="checkbox"/>
b. Type of Well	OIL WELL <input type="checkbox"/>	GAS WELL <input type="checkbox"/>	OTHER <input type="checkbox"/>
2. Name of Operator	Amoco Production Company		
3. Address of Operator	P. O. Box 68, Hobbs, New Mexico 88240		
4. Location of Well	UNIT LETTER <u>H</u> LOCATED <u>2030</u> FEET FROM THE <u>North</u> LINE		
AND <u>680</u> FEET FROM THE <u>East</u> LINE OF SEC. <u>9</u> TWP. <u>19-S</u> RGE. <u>38-E</u> NMPM			

1. Elevations (Show whether DF, HT, etc.)	21A. Kind & Status Plug. Bond	21B. Drilling Contractor	19. Proposed Depth	19A. Formation	20. Rotary or C.T.
3599.9' GL	Blanket-on-file	N/A	4500'	Grayburg San Andres	Rotary

PROPOSED CASING AND CEMENT PROGRAM

SIZE OF HOLE	SIZE OF CASING	WEIGHT PER FOOT	SETTING DEPTH	SACKS OF CEMENT	EST. TOP
12-1/4"	8-5/8"	24#	1600'	Circulate	Surface
7-7/8"	5-1/2"	15.5#	4500'	Circulate	Surface

Propose to drill and equip well in the Grayburg San Andres formation.
After reaching TD, logs will be run and evaluated.

* This is a replacement well for South Hobbs (GSA) Unit No. 75. The well will be left shut-in pending approval of Forms C-108, authorization to injection.

Mud Program: 0 - 1600'
1600 - 4500'

Fresh water and Native mud
Brine with minimum prop-
erties for safe hole con-
ditions

BOP Diagram attached.

O+6-NMOCD, H 1-HOU, R. E. Ogden, Rm 21.150 1-F. J. Nash, HOU Rm 4.206 1-CMH 1-Texaco
1-Shell 1-Sun 1-Petro Lewis

IN ABOVE SPACE DESCRIBE PROPOSED PROGRAM; IF PROPOSAL IS TO DEEPEN OR PLUG BACK, GIVE DATA ON PRESENT PRODUCTIVE ZONE AND PROPOSED NEW PRODUCTIVE ZONE. GIVE BLOWOUT PREVENTER PROGRAM, IF ANY.

I hereby certify that the information above is true and complete to the best of my knowledge and belief.

Signed Charles M. Herring Title Administrative Analyst Date 12-19-83

(This space for State Use)

APPROVED BY ORIGINAL SIGNED BY JERRY SEXTON TITLE DISTRICT 1 SUPERVISOR DATE DEC 21 1983
CONDITIONS OF APPROVAL, IF ANY:

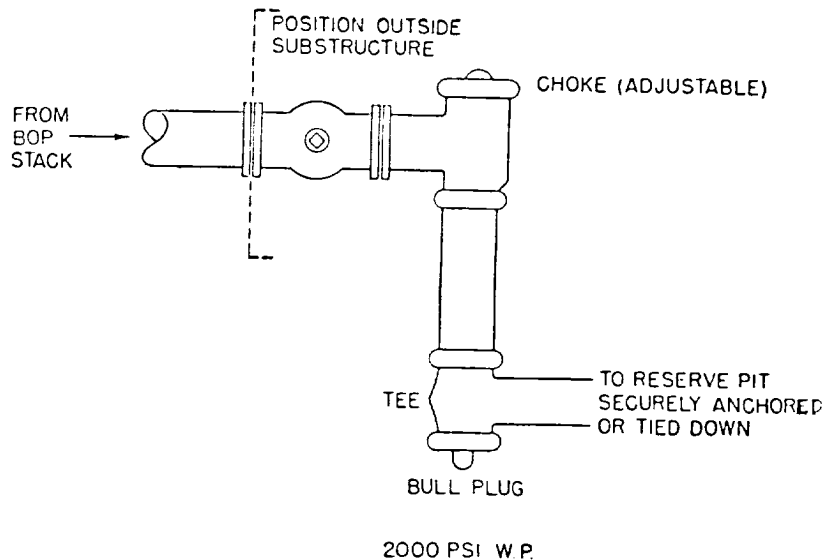
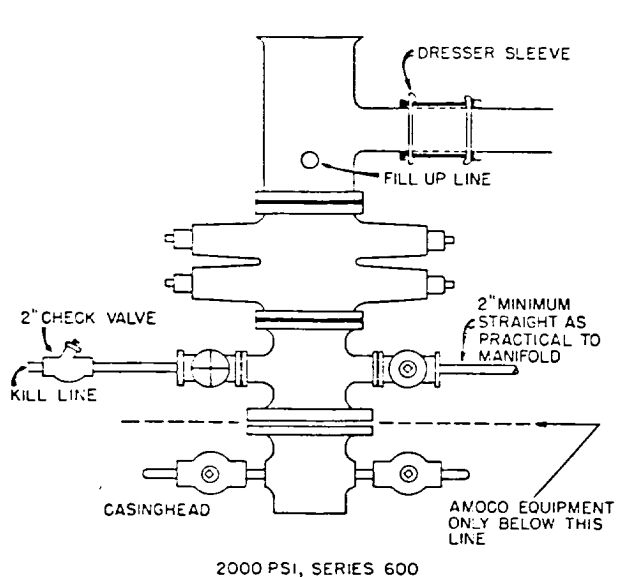
APPROVAL VALID FOR 180 DAYS
PERMIT EXPIRES 6/21/84
UNLESS DRILLING UNDERWAY

STANDARD 2000 PSI W.P. BOP STACK

1. Blow-out preventers may be manually operated.
2. All equipment must be in good condition, 2,000 psi W.P. (4,000 psi test) minimum.
3. Bell nipple above blow-out preventer shall be same size as casing being drilled through.
4. Kelly cock to be installed on kelly.
5. Full opening safety valve 2,000 psi w.p. (4,000 psi test) minimum must be available on rig floor at all times with proper connection or subs to fit any tool joint in string.
6. Spool or cross may be eliminated if connections are available in the lower part of the blow-out preventer body.
7. Double or space saver type preventers may be used in lieu of two single preventers.
8. BOP rams to be installed as follows:

Top preventer	-	Drill pipe or casing rams
Bottom preventer	-	Blind rams

*Amoco District Superintendent may reverse location of rams.
9. Extensions and hand wheels to be installed and braced at all times.
10. Manifold valves may be gate or plug metal to metal seal 2" minimum.



NEW MEXICO OIL CONSERVATION COMMISSION
WELL LOCATION AND ACREAGE DEDICATION PLAT

Form C-102
Supersedes C-128
Effective 1-1-65

All distances must be from the outer boundaries of the Section

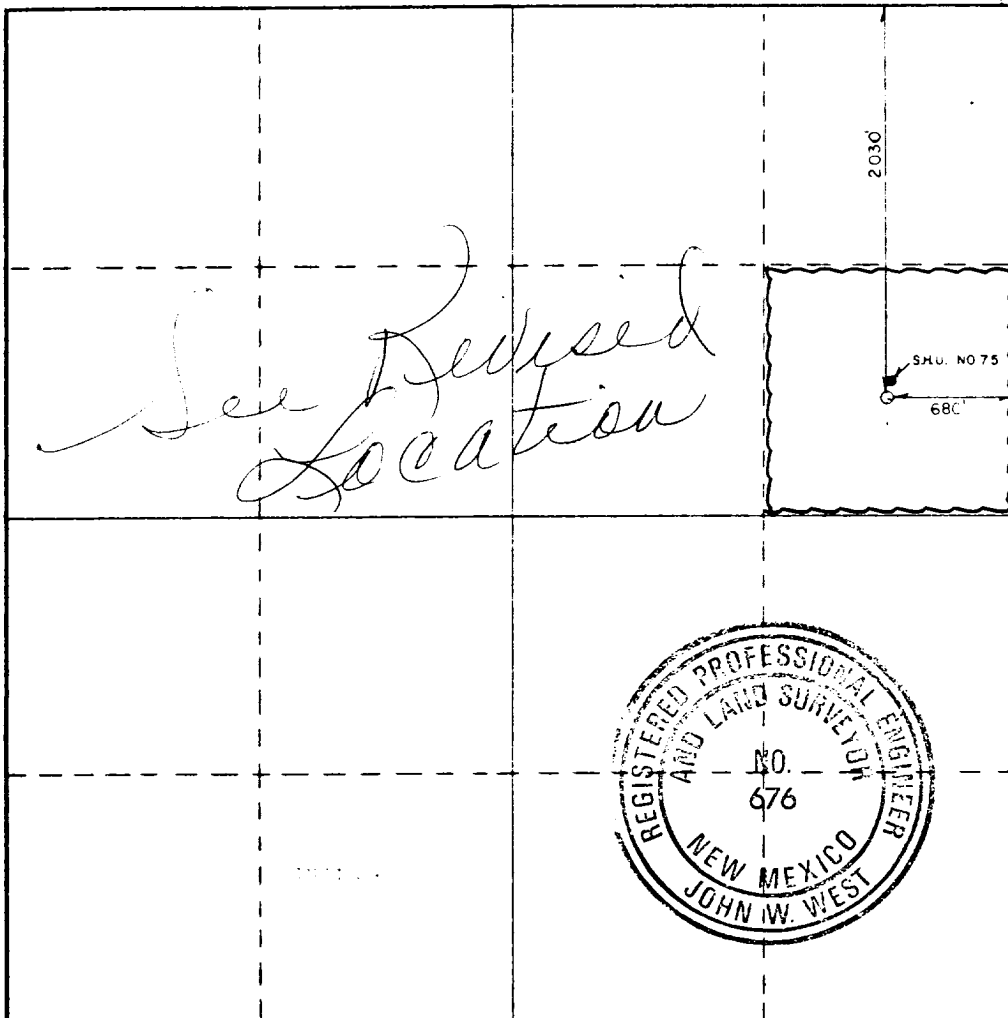
Operator AMOCO PRODUCTION CO.			Lease SOUTH HOBBS-GRAYBURG SAN ANDRES UNIT		Well No. 172
Tract Letter H	Section 9	Township 19S	Range 38E	County LEA	
Actual Footage Location of Well: 2030 feet from the NORTH line and 680 feet from the EAST line.					
Ground Level Elev. 3599.9	Producing Formation Grayburg San Andres		Pool Hobbs GSA		Dedicated Acreage 40 Acres

1. Outline the acreage dedicated to the subject well by colored pencil or hatchure marks on the plat below.
2. If more than one lease is dedicated to the well, outline each and identify the ownership thereof (both as to working interest and royalty).
3. If more than one lease of different ownership is dedicated to the well, have the interests of all owners been consolidated by communitization, unitization, force-pooling, etc?

☐ Yes ☐ No If answer is "yes," type of consolidation _____

If answer is "no," list the owners and tract descriptions which have actually been consolidated. (Use reverse side of this form if necessary.) _____

No allowable will be assigned to the well until all interests have been consolidated (by communitization, unitization, forced-pooling, or otherwise) or until a non-standard unit, eliminating such interests, has been approved by the Commission.



CERTIFICATION

I hereby certify that the information contained herein is true and complete to the best of my knowledge and belief.

Name Charles M. Herring
Position Administrative Analyst
Company Amoco Production Company
Date December 19, 1983

I hereby certify that the well location shown on this plat was plotted from field notes of actual surveys made by me or under my supervision, and that the same is true and correct to the best of my knowledge and belief.

Date Surveyed 12/15/83

Registered Professional Engineer and/or Land Surveyor

John W. West
Certificate No. N.M. P.E. & L.S. NO. 676



STANDARD 2000 PSI W.P. BOP STACK

1. Blow-out preventers may be manually operated.
2. All equipment must be in good condition, 2,000 psi W.P. (4,000 psi test) minimum.
3. Bell nipple above blow-out preventer shall be same size as casing being drilled through.
4. Kelly cock to be installed on kelly.
5. Full opening safety valve 2,000 psi w.p. (4,000 psi test) minimum must be available on rig floor at all times with proper connection or subs to fit any tool joint in string.
6. Spool or cross may be eliminated if connections are available in the lower part of the blow-out preventer body.
7. Double or space saver type preventers may be used in lieu of two single preventers.
8. BOP rams to be installed as follows:
 - Top preventer - Drill pipe or casing rams
 - Bottom preventer - Blind rams

*Amoco District Superintendent may reverse location of rams.
9. Extensions and hand wheels to be installed and braced at all times.
10. Manifold valves may be gate or plug metal to metal seal 2" minimum.

