

30-025-28673

NO. OF COPIES RECEIVED	
DISTRIBUTION	
SANTA FE	
FILE	
U.S.G.S.	
LAND OFFICE	
OPERATOR	

NEW MEXICO OIL CONSERVATION COMMISSION

Form C-101
Revised 1-1-65

5A. Indicate Type of Lease STATE <input checked="" type="checkbox"/> FEE <input type="checkbox"/>
5. State Oil & Gas Lease No. <u>E-1587</u>
7. Unit Agreement Name <u>Lea "NG" State</u>
8. Farm or Lease Name
9. Well No. <u>4</u>
10. Field and Pool, or Wildcat <u>N. Hall</u>
UNDESIGNATED
12. County <u>Lea</u>
19. Proposed Depth <u>6050'</u>
19A. Formation <u>San Andres</u>
20. Rotary or C.T. <u>Rotary</u>
21. Elevations (Show whether DF, RT, etc.) <u>3738.6' GL</u>
21A. Kind & Status Plng. Bond <u>Blanket</u>
21B. Drilling Contractor <u>Unknown</u>
22. Approx. Date Work will start <u>April 15, 1984</u>

1a. Type of Work			
b. Type of Well DRILL <input checked="" type="checkbox"/> DEEPEN <input type="checkbox"/> PLUG BACK <input type="checkbox"/>			
OIL WELL <input checked="" type="checkbox"/> GAS WELL <input type="checkbox"/> OTHER <input type="checkbox"/> SINGLE ZONE <input checked="" type="checkbox"/> MULTIPLE ZONE <input type="checkbox"/>			
2. Name of Operator <u>Gulf Oil Corp.</u>			
3. Address of Operator <u>P. O. Box 670, Hobbs, NM 88240</u>			
4. Location of Well UNIT LETTER <u>0</u> LOCATED <u>330</u> FEET FROM THE <u>South</u> LINE AND <u>2310</u> FEET FROM THE <u>East</u> LINE OF SEC. <u>29</u> TWP. <u>19S</u> RGE. <u>35E</u> NMPM			
23.			

PROPOSED CASING AND CEMENT PROGRAM

SIZE OF HOLE	SIZE OF CASING	WEIGHT PER FOOT	SETTING DEPTH	SACKS OF CEMENT	EST. TOP
<u>12 1/4"</u>	<u>8 5/8"</u>	<u>24</u>	<u>400'</u>	<u>300 lb 3 "C"</u>	<u>Surf</u>
<u>7 7/8"</u>	<u>5 1/2"</u>	<u>15.50</u>	<u>6050'</u>	<u>1800 lb 3 "C"</u>	<u>Surf</u>

Drilling Fluids: 0'-400' FW Spud Mud 8.6-8.8 ppg 32-36 vis 9.0 ph NCWL
 400'-TD Saturated Salt Water 9.8-10.1 ppg 28-31 vis
 8.0 ph NCWL

BOP Program: See Attached Drawing #2 3000 psi Working Pressure

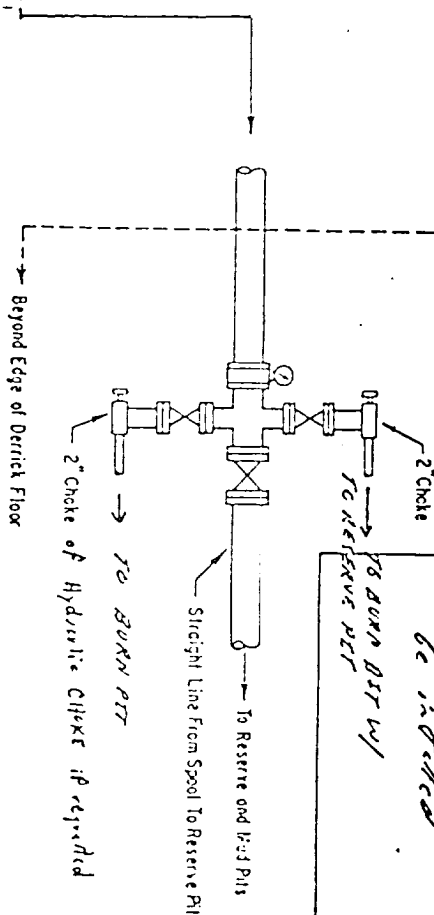
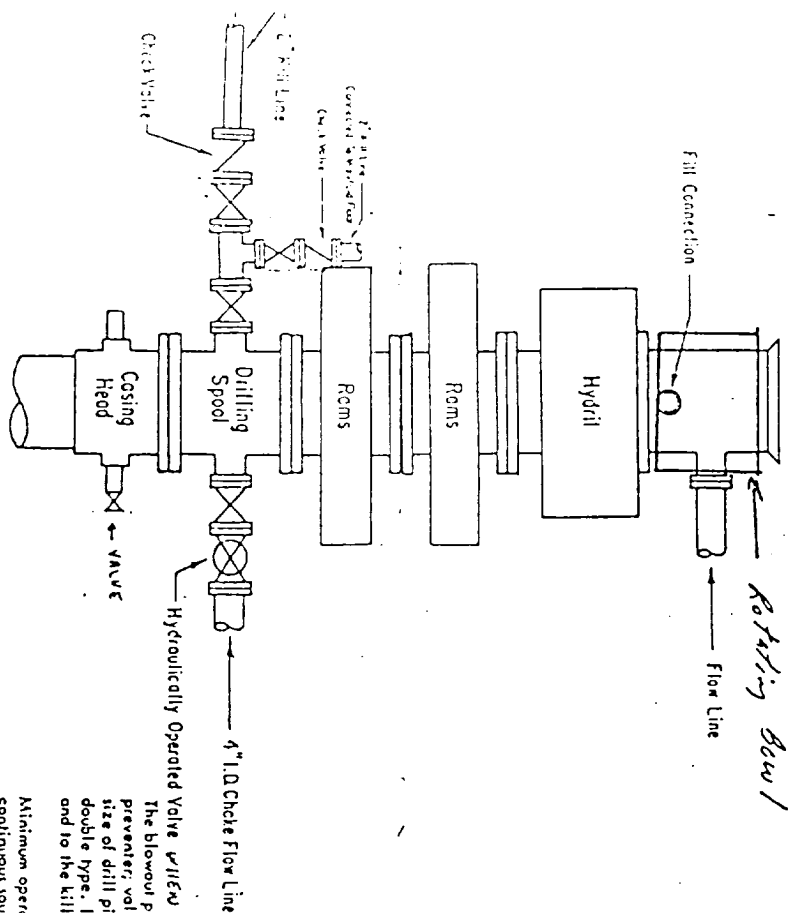
APPROVAL VALID FOR 180 DAYS
 PERMIT EXPIRES 10/3/84
 UNLESS DRILLING UNDERWAY

IN ABOVE SPACE DESCRIBE PROPOSED PROGRAM: IF PROPOSAL IS TO DEEPEN OR PLUG BACK, GIVE DATA ON PRESENT PRODUCTIVE ZONE AND PROPOSED NEW PRODUCTIVE ZONE. GIVE BLOWOUT PREVENTER PROGRAM, IF ANY.

I hereby certify that the information above is true and complete to the best of my knowledge and belief.

Signed R. C. Guden Title AREA PROD MGR Date 3-30-84
 (This space for State Use)

APPROVED BY ORIGINAL SIGNED BY JERRY SEXTON TITLE DISTRICT 1 SUPERVISOR DATE APR 5 1984
 CONDITIONS OF APPROVAL, IF ANY:



ADDITIONS - DELETIONS - CHANGES SPECIFY

NOTE: Unless Requested in any
at any time the Gulf Supervision
can, may, or will require the
equipment to be installed during
operations.

Rotating Bowl to
be indicated

2000-3000 PSI WORKING PRESSURE BOP HOOK-UP FOR LARGE CASINGS

SPECIFY WORKING PRESSURE

located, with control handles to indicate open and closed positions. A pressure reducer and regulator must be provided for operating the Hydril preventer. When requested, a second pressure reducer shall be available to limit operating fluid pressures to ram preventers. Gulf Legion No. 38 hydraulic oil, an equivalent or better, is to be used as the fluid to operate the hydraulic equipment.

The choke manifold, the choke flow line, the choke lines and the relief lines are to be supported by metal stands and adequately anchored. The choke flow line, relief lines and choke lines shall be constructed as straight as possible and without sharp bends. Easy access shall be maintained to the choke manifold. All valves are to be selected for operation in the presence of oil, gas, and drilling fluid. The choke flow line valves and valves of the relief lines connected to the drilling spools and all ram type preventers must be equipped with stem extensions, universal joints if needed, and hand wheels which are to extend beyond the edge of the derrick structure. All other valves shall be equipped with handles.

The blowout preventer assembly shall consist of one blind ram preventer and one pipe ram preventer, both hydraulically operated; a Hydril preventer; valves; chokes and connections, as illustrated. If a tapered drill string is used, a ram preventer shall be provided for each size of drill pipe. Casing and tubing rams to fit the preventers are to be available as needed. The ram preventers may be two tingers or a double type. If correct in size, the flanged outlet of the ram preventer may be used for connecting to the 4-inch I.D. choke flow line and to the kill line. The substructure height shall be sufficient to install a rotating blowout preventer.

Minimum operating equipment for the preventers and hydraulically operated valves shall be as follows: (1) multiple pumps, driven by a continuous source of power, capable of fluid changing the total accumulator volume from the nitrogen precharge pressure to its rated pressure within 2 minutes. Also, the pumps are to be connected to the hydraulic operating system which is to be a closed system. (2) accumulators with a precharge of nitrogen of not less than 750 PSI and connected so as to receive the aforementioned fluid charge. With the charging pumps shut down, the pressurized fluid volume stored in the accumulator shall be sufficient to close all the pressure-operated devices simultaneously within 1/2 seconds, after closure, the remaining accumulator pressure shall be not less than 1000 PSI with the remaining accumulator fluid volume of least 50 percent of the original. When requested, either an additional source of power, remote and equivalent, is to be available to operate the above pumps, or there shall be additional pumps operated by separate power and equal in performance capabilities.

N MEXICO OIL CONSERVATION COMMISS
WELL LOCATION AND ACREAGE DEDICATION PLAT

Form C-102
Supersedes C-128
Effective 1-1-65

All distances must be from the outer boundaries of the Section.

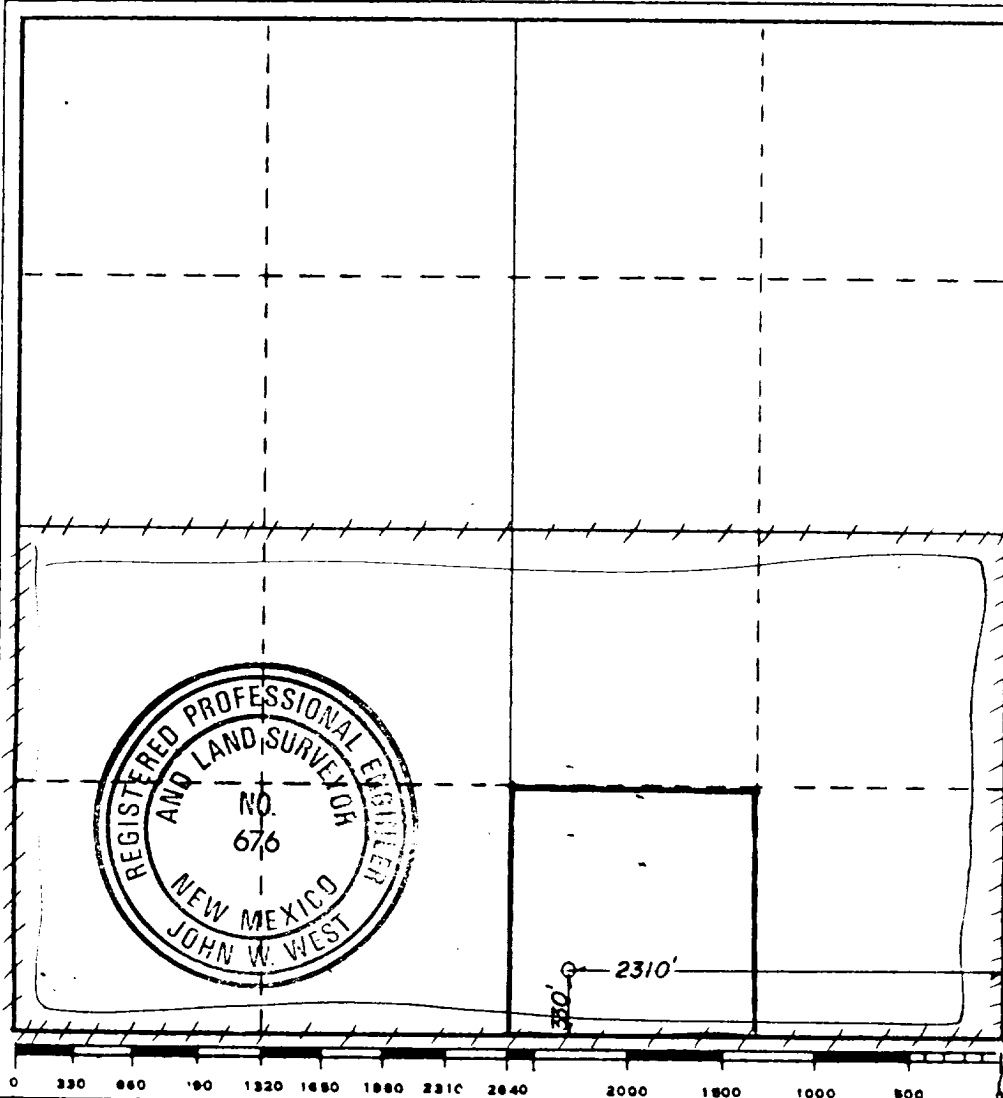
Operator GULF OIL CORP.			Lease LEA AQ STATE DEED UNIT		Well No. 4
Unit Letter 0	Section 29	Township 19 SOUTH	Range 35 EAST	County LEA	
Actual Footage Location of Well: 330 feet from the SOUTH line and 2310 feet from the EAST line					
Ground Level Elev. 3738.6'	Producing Formation <i>San Andres</i>		Pool <i>West Pearl</i>	Dedicated Acreage: 40 Acres	

1. Outline the acreage dedicated to the subject well by colored pencil or hachure marks on the plat below.
2. If more than one lease is dedicated to the well, outline each and identify the ownership thereof (both as to working interest and royalty).
3. If more than one lease of different ownership is dedicated to the well, have the interests of all owners been consolidated by communitization, unitization, force-pooling, etc?

☐ Yes ☐ No If answer is "yes," type of consolidation _____

If answer is "no," list the owners and tract descriptions which have actually been consolidated. (Use reverse side of this form if necessary.) _____

No allowable will be assigned to the well until all interests have been consolidated (by communitization, unitization, forced-pooling, or otherwise) or until a non-standard unit, eliminating such interests, has been approved by the Commission.



CERTIFICATION

I hereby certify that the information contained herein is true and complete to the best of my knowledge and belief.

L.C. Anderson

Name **R.C. ANDERSON**
Position **AREA PROD MANAGER**
Company **GULF OIL CORP**
Date **3-30-84**

I hereby certify that the well location shown on this plat was plotted from field notes of actual surveys made by me or under my supervision, and that the same is true and correct to the best of my knowledge and belief.

Date Surveyed **3-28-84**
Registered Professional Engineer and/or Land Surveyor

John W. West
Certificate No. **JOHN W. WEST, 676**
RONALD J. EIDSON, 3239

RECEIVED
APR 3 1984
FBI
FEDERAL BUREAU OF INVESTIGATION
U.S. DEPARTMENT OF JUSTICE

171